

| | |
|------------------------|--|
| NO. OF COPIES RECEIVED | |
| DISTRIBUTION | |
| SANTA FE | |
| FILE | |
| U.S.G.S. | |
| LAND OFFICE | |
| OPERATOR | |

P. O. BOX 208
SANTA FE, NEW MEXICO 87501

RECEIVED BY

APR 23 1987

O. C. D.

ARTESIA OFFICE

5A. Indicate Type of Lease

STATE ☒ FEE ☐

5. State Oil & Gas Lease No.

APPLICATION FOR PERMIT TO DRILL, DEEPEN, OR PLUG BACK

1a. Type of Work

DRILL ☒

DEEPEN ☐

PLUG BACK ☐

7. Unit Agreement Name

8. Farm or Lease Name

State "24"

9. Well No.

2

10. Field and Pool, or Wildcat

Red Lake Queen Grayburg

12. County

Eddy

1b. Type of Well

OIL WELL ☒

GAS WELL ☐

OTHER

SINGLE ZONE ☐

MULTIPLE ZONE ☐

2. Name of Operator

Spectrum 7 Exploration Company

3. Address of Operator

P. O. Box 10626, Midland, Texas 79702

4. Location of Well

UNIT LETTER P LOCATED 330 FEET FROM THE East LINE

AND 430 FEET FROM THE South LINE OF SEC. 24 TWP. 16-S RGE. 28-E NMPM

19. Proposed Depth

1,800'

19A. Formation

Penrose Sand

20. Rotary or C.T.

Rotary

1. Elevations (show whether DE, RT, etc.)

3,593.4

21A. Kind & Status Plug. Bond

Single Well Bond ☒

21B. Drilling Contractor

Artesia Fishing Tool Co.

22. Approx. Date Work will start

4-27-87

13.

PROPOSED CASING AND CEMENT PROGRAM

| SIZE OF HOLE | SIZE OF CASING | WEIGHT PER FOOT | SETTING DEPTH | SACKS OF CEMENT | EST. TOP |
|--------------|----------------|-----------------|---------------|-----------------|----------|
| 12-1/4 | 8-5/8 | 24 | 300' | 220 | Surface |
| 7-7/8 | 4-1/2 | 10.5 | 1,800' | 490 | Surface |

We propose to drill a 12-1/4" hole to 300', set 8-5/8" surface casing and cement with 220 sacks - circulating cement. Drill a 7-7/8" hole to T.D. of 1,800', set 4-1/2" casing and cement with 490 sacks, circulating cement to surface.

A 3,000 PSI working pressure BOP will be used.

24101
APR 23
5-1-87

WILL BE VALID FOR 180 DAYS
FROM DATE 4-27-87
OF DRILLING UNDERWAY

ABOVE SPACE DESCRIBE PROPOSED PROGRAM: IF PROPOSAL IS TO DEEPEN OR PLUG BACK, GIVE DATA ON PRESENT PRODUCTIVE ZONE AND PROPOSED NEW PRODUCTIVE ZONE. GIVE BLOWOUT PREVENTER PROGRAM, IF ANY.

I hereby certify that the information above is true and complete to the best of my knowledge and belief.

Signed Jim McCreath Title Engineer Date April 20, 1987

(This space for State Use)

Original Signed By

Mike Williams

DATE APR 27 1987

PROVED BY

JOINTIONS OF APPROVAL, IF ANY Oil & Gas Inspector

**N MEXICO OIL CONSERVATION COMMISSION
WELL LOCATION AND ACREAGE DEDICATION PLAT**

Form C-102
Supersedes C-128
Effective 1-4-65

All distances must be from the outer boundaries of the Section.

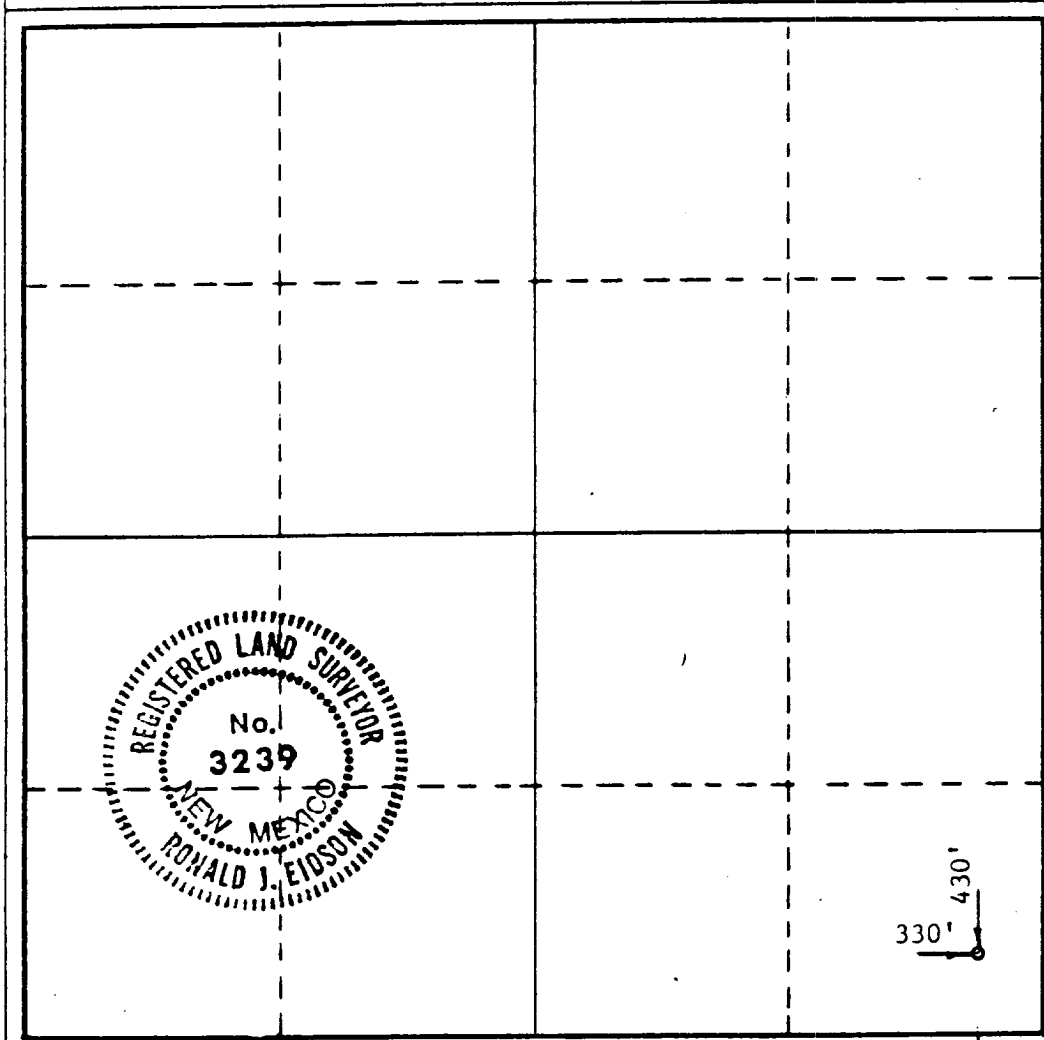
| | | | | | |
|--|--|-----------------------------|--------------------------|---------------------------------------|----------------------|
| Operator Spectrum 7 Exploration Co. | | | Lease State 24 | | Well No. 2 |
| Unit Letter P | Section 24 | Township 16 South | Range 28 East | County Eddy | |
| Actual Footage Location of Well: 430 feet from the South line and 330 feet from the East line | | | | | |
| Ground Level Elev. 3593.4 | Producing Formation Penrose Sand | | | Dedicated Acreage: 40 Acres | |

1. Outline the acreage dedicated to the subject well by colored pencil or hachure marks on the plat below.
 2. If more than one lease is dedicated to the well, outline each and identify the ownership thereof (both as to working interest and royalty).
 3. If more than one lease of different ownership is dedicated to the well, have the interests of all owners been consolidated by communitization, unitization, force-pooling, etc? **O. C. D.**
- ☐ Yes ☐ No If answer is "yes," type of consolidation _____

**RECEIVED BY
APR 23 1987
ARTESIA OFFICE**

If answer is "no," list the owners and tract descriptions which have actually been consolidated. (Use reverse side of this form if necessary.) _____

No allowable will be assigned to the well until all interests have been consolidated (by communitization, unitization, forced-pooling, or otherwise) or until a non-standard unit, eliminating such interests, has been approved by the Commission.



CERTIFICATION

I hereby certify that the information contained herein is true and complete to the best of my knowledge and belief.

Name Jim McAninch
 Position Engineer
 Company Spectrum 7 Exploration
 Date April 20, 1987

I hereby certify that the well location shown on this plat was plotted from field notes of actual surveys made by me or under my supervision, and that the same is true and correct to the best of my knowledge and belief.

Date Surveyed April 16, 1987
 Registered Professional Engineer and/or Land Surveyor

Ronald J. Eidson
 Certificate No. JOHN W. WEST, 676
RONALD J. EIDSON, 3239

