

UNITED STATES
DEPARTMENT OF THE INTERIOR
BUREAU OF LAND MANAGEMENT

APPLICATION FOR PERMIT TO DRILL, DEEPEN, OR PLUG BACK

1a. TYPE OF WORK

DRILL ☒

DEEPEN ☐

PLUG BACK ☐

b. TYPE OF WELL

OIL
WELL ☒

GAS
WELL ☐

OTHER ☐

SINGLE
ZONE ☐

MULTIPLE
ZONE ☐

2. NAME OF OPERATOR

Norwood Oil Company

3. ADDRESS OF OPERATOR

P. O. Box 1029, Malakoff, TX 75148

4. LOCATION OF WELL (Report location clearly and in accordance with any State requirements.)

At surface

2310' FSL & 1950' FWL

At proposed prod. zone

Same

14. DISTANCE IN MILES AND DIRECTION FROM NEAREST TOWN OR POST OFFICE*

8 miles northwest of Loco Hills, NM

15. DISTANCE FROM PROPOSED*

LOCATION TO NEAREST

PROPERTY OR LEASE LINE, FT.

(Also to nearest drlg. unit line, if any)

1950'

18. DISTANCE FROM PROPOSED LOCATION*
TO NEAREST WELL, DRILLING, COMPLETED,
OR APPLIED FOR, ON THIS LEASE, FT.

660'

16. NO. OF ACRES IN LEASE

640

17. NO. OF ACRES ASSIGNED
TO THIS WELL

40

19. PROPOSED DEPTH

1850'

20. ROTARY OR CABLE TOOLS

Rotary

21. ELEVATIONS (Show whether DF, RT, GR, etc.)

3642.3' GR

22. APPROX. DATE WORK WILL START*

8/2/87

23. PROPOSED CASING AND CEMENTING PROGRAM

SIZE OF HOLE	SIZE OF CASING	WEIGHT PER FOOT	SETTING DEPTH	QUANTITY OF CEMENT
12-1/4"	8-5/8"	24#	250'	300 sx Class "C" w/ 2% CaCl
7-7/8"	4-1/2"	9.5#	1850'	400 sx Class "C"

Well will be drilled to a total depth of approximately 1850' and all potential oil and gas zones will be evaluated. If commercial production is indicated, well will be selectively perforated and stimulated.

Attached are: 1. Well location and dedication plat
2. Supplemental drilling data
3. Surface Use Plan

Gas is not dedicated to a pipeline

IN ABOVE SPACE DESCRIBE PROPOSED PROGRAM: If proposal is to deepen or plug back, give data on present productive zone and proposed new productive zone. If proposal is to drill or deepen directionally, give pertinent data on subsurface locations and measured and true vertical depths. Give blowout preventer program, if any.

24.

SIGNED Lita R. Small TITLE Agent DATE 7/25/87

(This space for Federal or State office use)

PERMIT NO. _____ APPROVAL DATE _____

APPROVED BY _____ TITLE _____ DATE 8-11-87
CONDITIONS OF APPROVAL, IF ANY:

*See Instructions On Reverse Side

Title 18 U.S.C. Section 1001, makes it a crime for any person knowingly and willfully to make to any department or agency of the United States any false, fictitious or fraudulent statements or representations as to any matter within its jurisdiction.

5. LEASE DESIGNATION AND SERIAL NO.

LC-046119A

6. IF INDIAN, ALLOTTEE OR TRIBE NAME

7. UNIT AGREEMENT NAME

8. FARM OR LEASE NAME

Iles Federal

9. WELL NO.

#8

10. FIELD AND POOL, OR WILDCAT

High Lonesome - Sweet

11. SEC., T., R., M., OR BLK.
AND SURVEY OR AREA

Sec 17-T16S-R29E

12. COUNTY OR PARISH 13. STATE

Eddy

NM

N MEXICO OIL CONSERVATION COMMISS
WELL LOCATION AND ACREAGE DEDICATION PLAT

Form C-102
 Supersedes C-128
 Effective 1-1-65

All distances must be from the outer boundaries of the Section

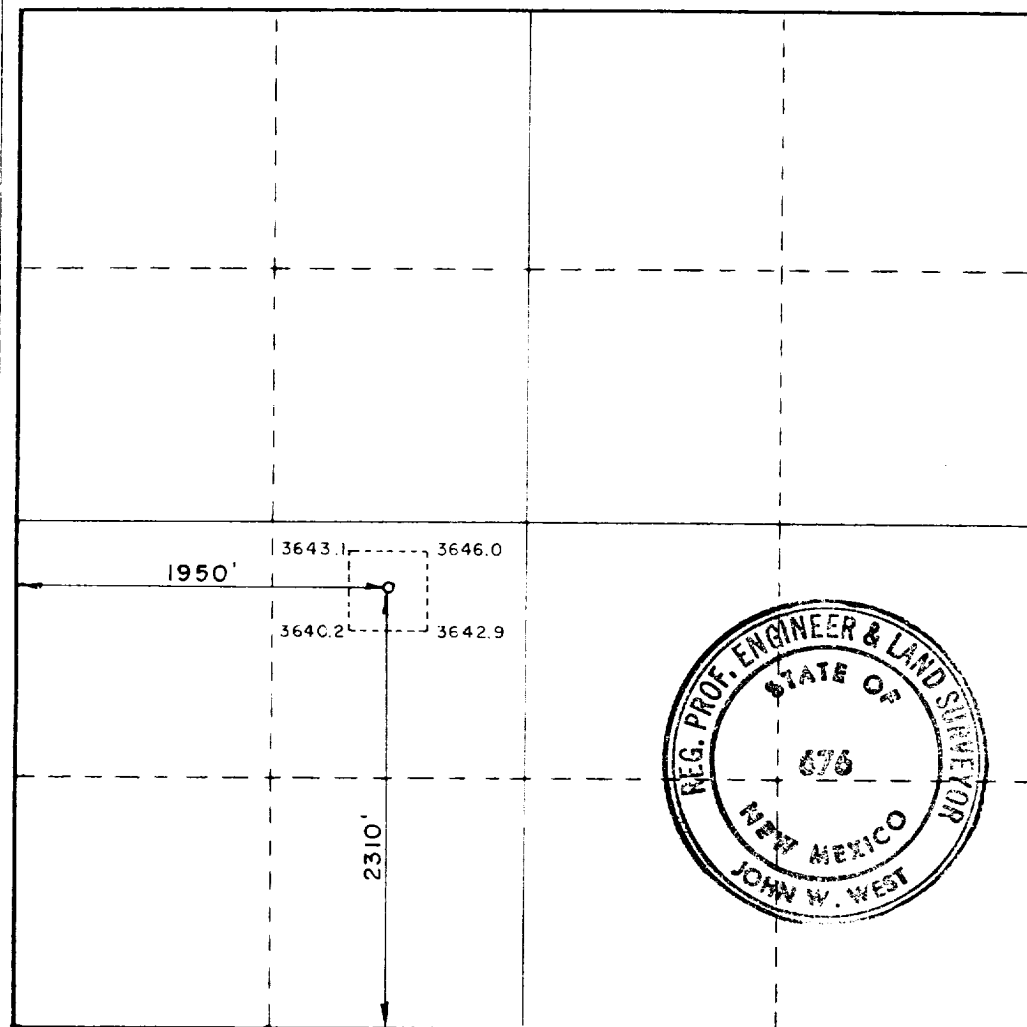
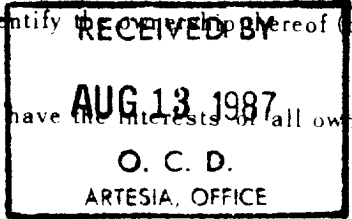
Operator Norwood Oil Company			Lease 11es Federal		Well No. #8
Section Letter K	Section 17	Township 16 South	Range 29 East	County Eddy	
Actual Footage Location of Well:					
2310		feet from the South	line and	1950	feet from the West line
Ground Level Elev. 3642.3	Producing Formation Queen		Pool High Line - Queen		Dedicated Acreage: 40 Acres

1. Outline the acreage dedicated to the subject well by colored pencil or hatchure marks on the plat below.
2. If more than one lease is dedicated to the well, outline each and identify the owner thereof (both as to working interest and royalty).
3. If more than one lease of different ownership is dedicated to the well, have the interests of all owners been consolidated by communitization, unitization, force-pooling, etc?

☐ Yes ☐ No If answer is "yes," type of consolidation _____

If answer is "no," list the owners and tract descriptions which have actually been consolidated. (Use reverse side of this form if necessary.) _____

No allowable will be assigned to the well until all interests have been consolidated (by communitization, unitization, forced-pooling, or otherwise) or until a non-standard unit, eliminating such interests, has been approved by the Commission.



CERTIFICATION

I hereby certify that the information contained herein is true and complete to the best of my knowledge and belief.

Beth McDonald
 Name

Beth McDonald

Position

Agent

Company

Norwood Oil Company

Date

7/24/87

I hereby certify that the well location shown on this plat was plotted from field notes of actual surveys made by me or under my supervision, and that the same is true and correct to the best of my knowledge and belief.

Date Surveyed

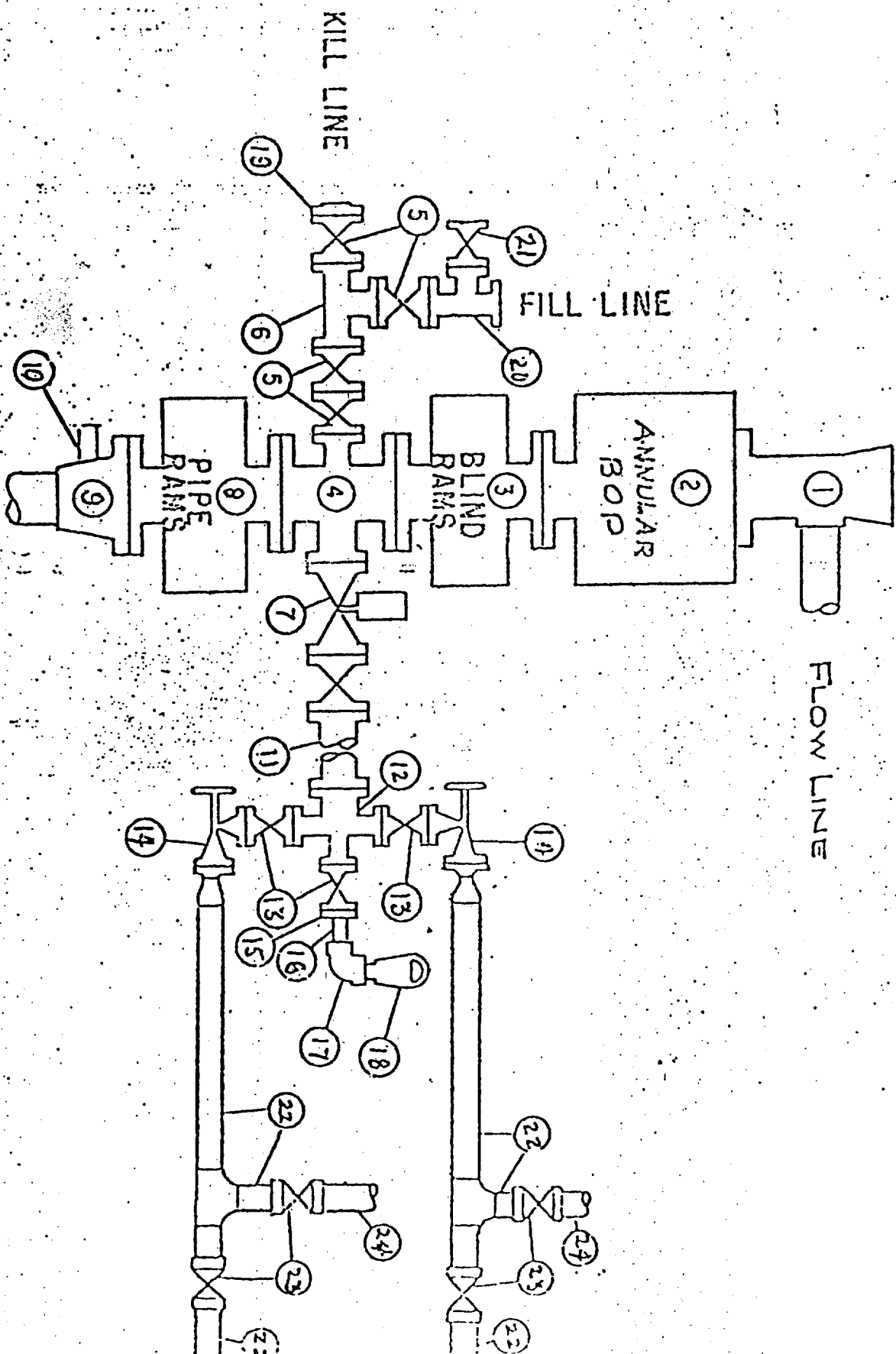
July 17, 1987

Registered Professional Engineer and/or Land Surveyor

[Signature]

Certificate No. **JOHN W. WEST, 676**
RONALD J. EIDSON, 3239

BLOWOUT PREVENTER SPECIFICATION



SUPPLEMENTAL DRILLING DATA

Norwood Oil Company
WELL: Iles Federal #8
2310' FSL & 1950' FWL Sec 17-T16S-R29E
Eddy County, New Mexico

SURFACE FORMATION: Quaternary

ESTIMATED TOPS OF GEOLOGICAL MARKERS:

Rustler	200'
Salt	320'
Yates	730'
Queen	1480'

ANTICIPATED POROSITY ZONES:

Water	None
Oil	1400' - 1850'

CASING DESIGN:

<u>Hole Size</u>	<u>Casing</u>	<u>Interval</u>	<u>Weight</u>	<u>Class</u>	<u>Joint</u>	<u>Condition</u>
12-1/4"	8-5/8"	0 - 350'	24.0#	J-55	ST&C	New
7-7/8"	4-1/2"	0 - 1850'	9.5#	J-55	ST&C	New

SURFACE CONTROL EQUIPMENT: Shaeffer 10" Series 90 Blow-out-preventor with blind rams.

CIRCULATING MEDIUM: 0 - 350' Fresh Water; 350' - TD Brine Water

AUXILIARY EQUIPMENT: Drill string safety valve

TESTING, LOGGING AND CORING PROGRAMS: Gamma Ray Neutron Log from 0 - TD

ABNORMAL PRESSURES, TEMPERATURES OR GASES: None anticipated

ANTICIPATED DATES: It is planned that operations will commence about August 12, 1987, or immediately upon approval of this application. Duration of drilling and completion operations should be 20 to 40 days.

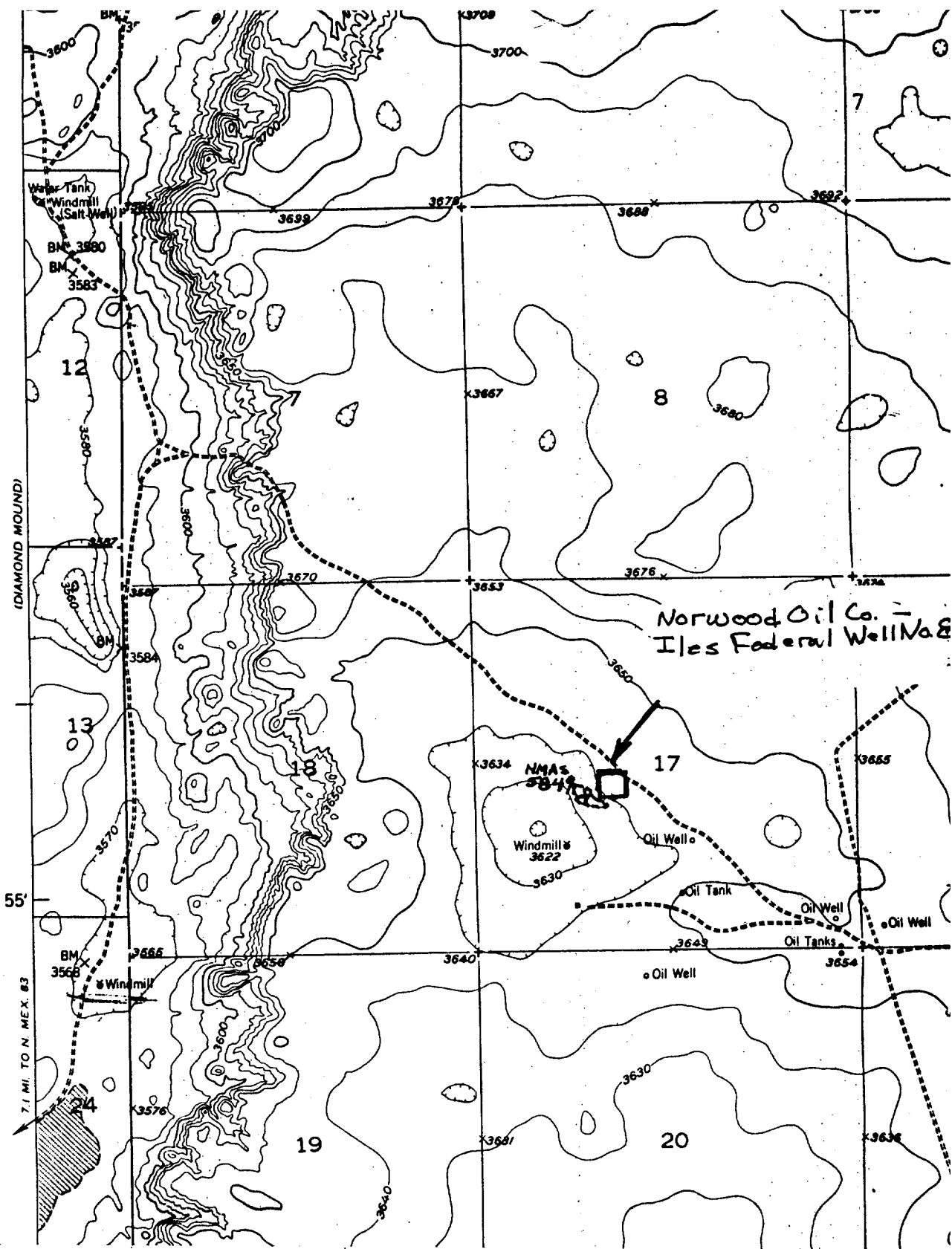


Fig. 1. USGS BASIN WELL QUADRANGLE, 7.5 Minute Series, 1:24,000, 1953, showing NORWOOD OIL COMPANY's proposed Iles Federal Well No. 8, 2310 FSL, 1950 FWL, Section 17, T16S, R29E, NMPM, Eddy County, New Mexico.

