

NO. OF COPIES RECEIVED	
DISTRIBUTION	
SANTA FE	/
FILE	/
U.S.G.S.	/
LAND OFFICE	/
OPERATOR	/

NEW MEXICO OIL CONSERVATION COMMISSION

30-015-25845

Form C-101
Revised 1-1-65

DEC 03 '87

O. C. D.

5A. Indicate Type of Lease
STATE ☒ FEE ☐

5. State Oil & Gas Lease No.
B-8814

APPLICATION FOR PERMIT TO DRILL, DEEPEN, OR PLUG BACK

1a. Type of Work

DRILL ☒

DEEPEN ☐

PLUG BACK ☐

b. Type of Well

OIL WELL ☒

GAS WELL ☐

OTHER

SINGLE ZONE ☒

MULTIPLE ZONE ☐

2. Name of Operator

Marbob Energy Corporation

3. Address of Operator

P. O. Drawer 217, Artesia, New Mexico 88210

4. Location of Well

UNIT LETTER M

LOCATED 719

FEET FROM THE South

LINE

760

FEET FROM THE

West

LINE OF SEC. 27

TWP. 17-S

RGE. 28-E

SECT. 36

12. County
Eddy

19. Proposed Depth

3500'

19A. Formation

San Andres

20. Rotary or C.T.

Rotary

21. Elevations (show whether DT, RT, etc.)

3678.6

21A. Kind & Status Plug. Bond

21B. Drilling Contractor

22. Approx. Date Work will start

12/12/87

23.

PROPOSED CASING AND CEMENT PROGRAM

SIZE OF HOLE	SIZE OF CASING	WEIGHT PER FOOT	SETTING DEPTH	SACKS OF CEMENT	EST. TOP
12 1/4"	8 5/8"	24#	500'	300	Circulate
7 7/8"	5 1/2"	17#	3500'	600	Attempt to circ.

We propose to drill to 500', run and cement 8 5/8" casing, reduce hole and drill to 3500' to test the San Andres formation, run and cement 5 1/2" casing, put well on production.

Post 111#1
12-11-87

IN ABOVE SPACE DESCRIBE PROPOSED PROGRAM: IF PROPOSAL IS TO DEEPEN OR PLUG BACK, GIVE DATA ON PRESENT PRODUCTIVE ZONE AND PROPOSED NEW PRODUCTIVE ZONE. GIVE BLOWOUT PREVENTER PROGRAM, IF ANY.

I hereby certify that the information above is true and complete to the best of my knowledge and belief.

Signed Rhonda Nelson Title Production Clerk Date 12/1/87

(This space for State Use)

Original Signed By

Mike Williams

Oil & Gas Inspector

DEC 8 1987

APPROVED BY _____ DATE _____

CONDITIONS OF APPROVAL, IF ANY

**NEW MEXICO OIL CONSERVATION COMMISSION
WELL LOCATION AND ACREAGE DEDICATION PLAT**

Form C-102
Supersedes C-128
Effective 1-1-65

All distances must be from the outer boundaries of the Section.

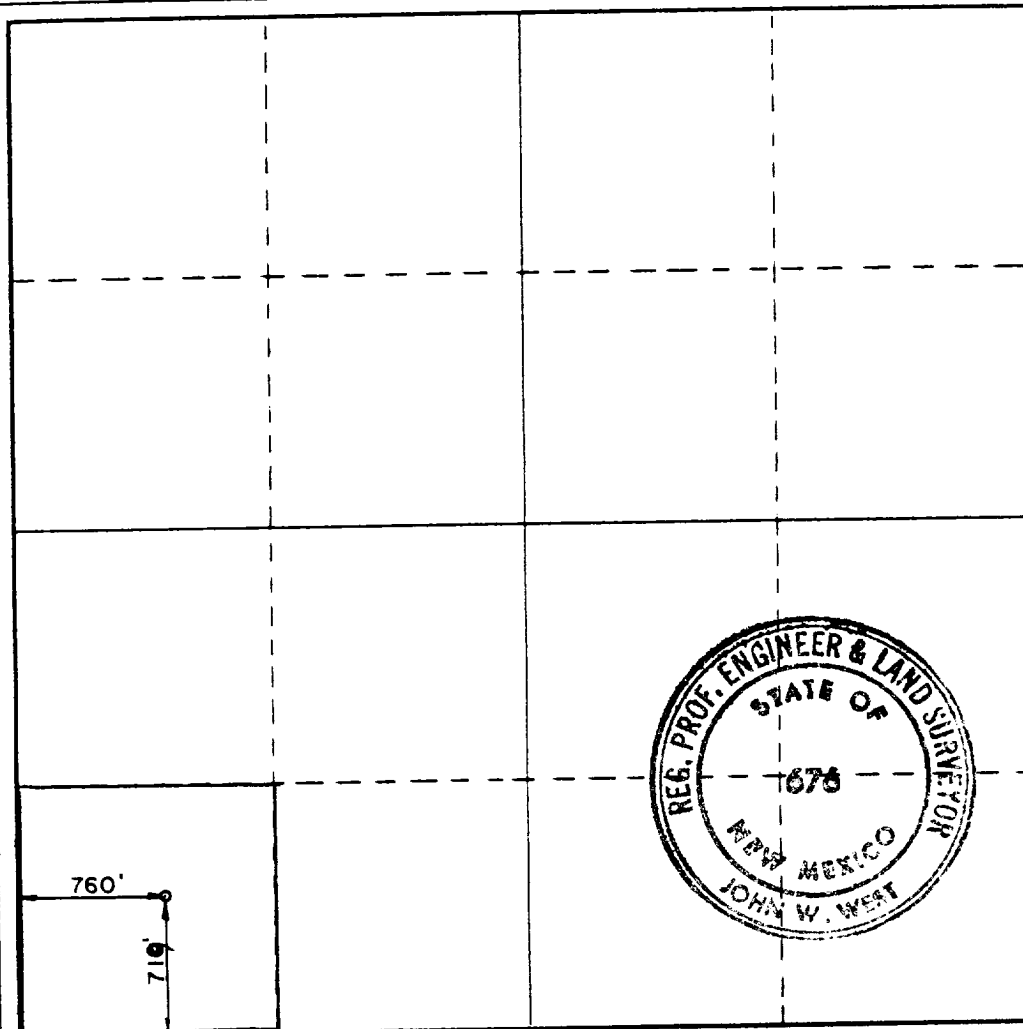
Operator Marbob Energy Corp.			Lease Elk State		Well No. 1
Unit Letter M	Section 27	Township 17-S	Range 28-E	County Eddy	
Actual Footage Location of Well: 719 feet from the South line and 760 feet from the West line					
Ground Level Elev. 3678.6	Producing Formation San Andres		Pool Grbg Jackson SR O Gh SA	Dedicated Acreage: 40 Acres	

1. Outline the acreage dedicated to the subject well by colored pencil or hachure marks on the plat below.
2. If more than one lease is dedicated to the well, outline each and identify the ownership thereof (both as to working interest and royalty).
3. If more than one lease of different ownership is dedicated to the well, have the interests of all owners been consolidated by communitization, unitization, force-pooling, etc?

☐ Yes ☐ No If answer is "yes," type of consolidation _____

If answer is "no," list the owners and tract descriptions which have actually been consolidated. (Use reverse side of this form if necessary.) _____

No allowable will be assigned to the well until all interests have been consolidated (by communitization, unitization, forced-pooling, or otherwise) or until a non-standard unit, eliminating such interests, has been approved by the Commission.



CERTIFICATION

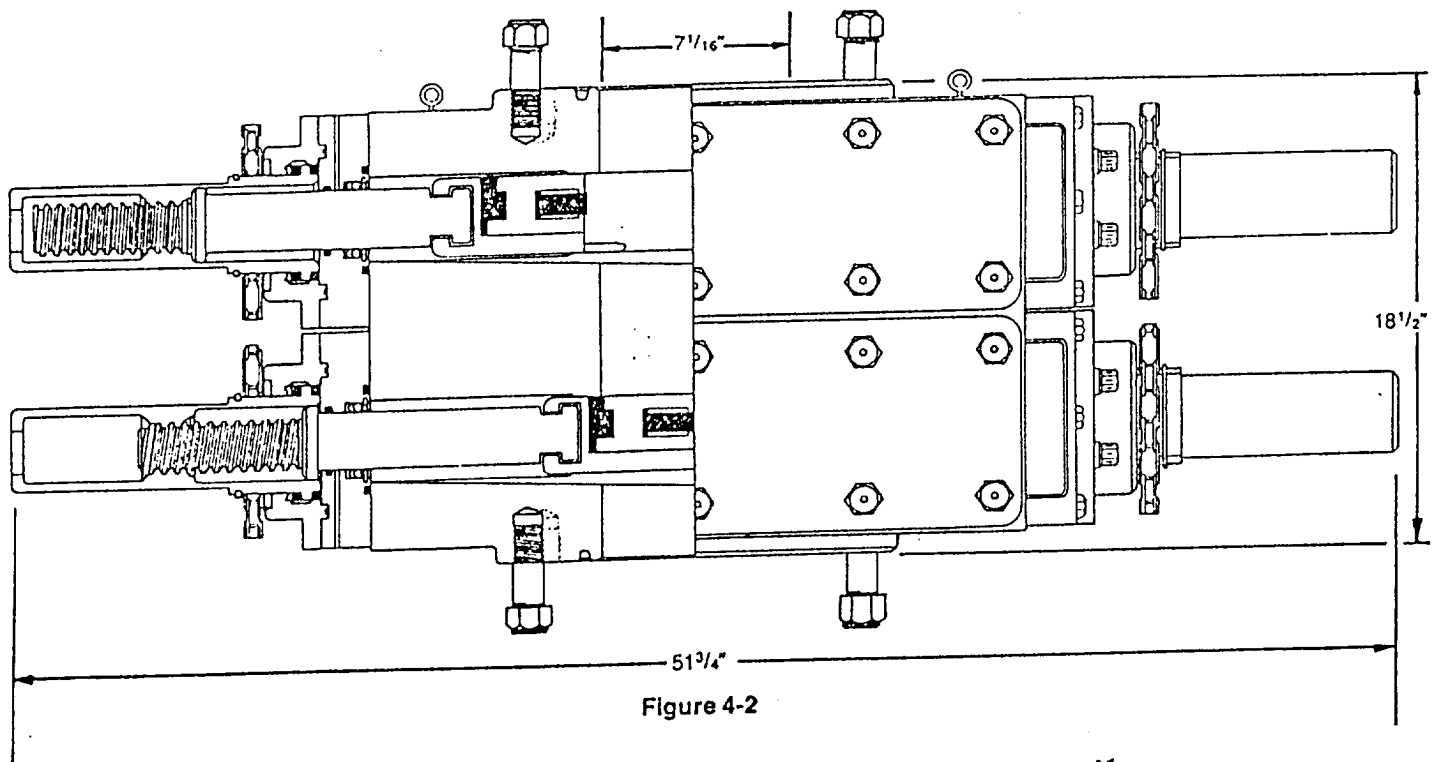
I hereby certify that the information contained herein is true and complete to the best of my knowledge and belief.

David Martin
 Name **David Martin**
 Position **Land Department**
 Company **Marbob Energy Corporation**
 Date **12/3/87**

I hereby certify that the well location shown on this plat was plotted from field notes of actual surveys made by me or under my supervision, and that the same is true and correct to the best of my knowledge and belief.

Date Surveyed
November 30, 1987
 Registered Professional Engineer and/or Land Surveyor

John W. West
 Certificate No. **JOHN W. WEST, 676**
RONALD J. EIDSON, 3239



DIMENSIONS AND WEIGHTS

		Manual
Weight	Single (pounds)	1,272
	Double (pounds)	2,335
Overall height, less studs	Single (inches)	10
	Double (inches)	18 1/2
Overall length (inches)		51 3/4
Overall width, less handwheel (inches)		20 1/4
Opening through preventer (inches)		7 1/16
Working pressure (psi)		3,000
Test pressure (psi)		6,000
Handwheel diameter (inches)		20
Ring joint gasket API number		R-45

SUP Exhibit "E"

MARBOB ENERGY CORPORATION
ELK STATE NO. 1
SEC. 27, T-17-S, R-28-E
EDDY COUNTY, NEW MEXICO