

UNITED STATES  
DEPARTMENT OF THE INTERIOR  
GEOLOGICAL SURVEY

## APPLICATION FOR PERMIT TO DRILL, DEEPEN, OR PLUG BACK

## 1a. TYPE OF WORK

DRILL ☒DEEPEN ☐PLUG BACK ☐

## b. TYPE OF WELL

OIL  
WELL ☒GAS  
WELL ☐

OTHER

SINGLE  
ZONE ☒MULTIPLE  
ZONE ☐

## 2. NAME OF OPERATOR

Metex Pipe &amp; Supply

## 3. ADDRESS OF OPERATOR

2407 Sierra Vista Artesia, N. M. 88210

## 4. LOCATION OF WELL (Report location clearly and in accordance with any State requirements.)\*

At surface

2970' FSL &amp; 635 FWL

At proposed prod. zone

## 14. DISTANCE IN MILES AND DIRECTION FROM NEAREST TOWN OR POST OFFICE\*

11 Miles N. W. of Maljamar, N. M.

## 15. DISTANCE FROM PROPOSED\*

LOCATION TO NEAREST  
PROPERTY OR LEASE LINE, FT.  
(Also to nearest drlg. unit line, if any)

## 18. DISTANCE FROM PROPOSED LOCATION\*

TO NEAREST WELL, DRILLING, COMPLETED,  
OR APPLIED FOR, ON THIS LEASE, FT.

## 16. NO. OF ACRES IN LEASE

1228

## 19. PROPOSED DEPTH

3400

17. NO. OF ACRES ASSIGNED  
TO THIS WELL

29.2713

## 20. ROTARY OR CABLE TOOLS

Rotary

## 21. ELEVATIONS (Show whether DF, RT, GR, etc.)

3969.3 GL

## 22. APPROX. DATE WORK WILL START\*

3-5-88

## 23.

## PROPOSED CASING AND CEMENTING PROGRAM

| SIZE OF HOLE | SIZE OF CASING | WEIGHT PER FOOT | SETTING DEPTH | QUANTITY OF CEMENT                       |
|--------------|----------------|-----------------|---------------|--|
| 12 1/2       | 8 5/8          | 24# J-55 API    | 400'          | 445 cu. ft. <u>circulated to surface</u> |
| 7 7/8        | 5 1/2          | 17# J-55 API    | 3400'         | A. 1165 cu. ft. from 2650' to surface    |

B. 327 Cu. Ft. from TD to 2650'

## Logging Program

FDT-CNL-GR TD 1800'

CNL-GR 1800'- Surface

## Cementing Program

1. Class C + 1/4# Sx.FC

2a. HALCO LITE + 11.25 # SX

Salt + 1/4# Sx FC

2b. Class C + 1/4# SX FC

Blowout Prevention  
See Attached DiagramPost ID #1  
NL-API  
3-18-88

## Mud Program

| Depth     | Type     | Mud Wt.   | Visc. | SE/QT | Water Loss |
|-----------|----------|-----------|-------|-------|------------|
| 0-400     | Spud     | 8.3-9.0   |       | 32-34 | NC         |
| 400-3100  | Brine    | 8.3-10.0  |       | 28-30 | NC         |
| 3100-T.D. | Salt Gel | 10.0-10.5 |       | 34-36 | +15        |

IN ABOVE SPACE DESCRIBE PROPOSED PROGRAM: If proposal is to deepen or plug back, give data on present productive zone and proposed new productive zone. If proposal is to drill or deepen directionally, give pertinent data on subsurface locations and measured and true vertical depths. Give blowout preventer program, if any.

## 24.

SIGNED

Martin B Muncy

TITLE

Operator

DATE

2-5-88

(This space for Federal or State office use)

PERMIT NO.

APPROVAL DATE

APPROVED BY

TITLE

AREA IN CHARGE

CARL SPAD RICHMOND

DATE

3.8.88

CONDITIONS OF APPROVAL, IF ANY:

\*See Instructions On Reverse Side

NEW MEXICO OIL CONSERVATION COMMIS. 4  
WELL LOCATION AND ACREAGE DEDICATION PLAT

Form C-102  
Supersedes C-128  
Effective 1-1-65

All distances must be from the outer boundaries of the Section

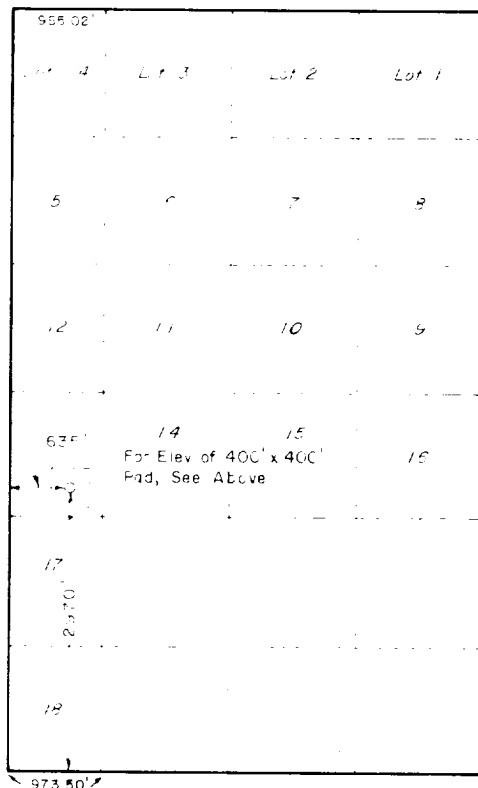
|   |                                 |                                   |                               |                |
|---|---------------------------------|-----------------------------------|-------------------------------|----------------|
| Operator<br>Metex Pipe & Supply Company   |                                 | Lease<br>Pegasus Federal          |                               | Well No.<br>1  |
| Unit Letter<br>M  | Section<br>6                    | Township<br>16 South              | Range<br>31 East              | County<br>Eddy |
| Actual Footage Location of Well:<br>2970 feet from the south line and 635 feet from the west line |                                 |                                   |                               |                |
| Ground Level Elev.<br>959.3   | Producing Formation<br>Grayburg | Pool<br>VND.<br>NORTH SQUARE LAKE | Dedicated Acreage:<br>29.2713 | Area           |

- Outline the acreage dedicated to the subject well by colored pencil or hatchure marks on the plat below.
- If more than one lease is dedicated to the well, outline each and identify the ownership thereof (both as to working interest and royalty).
- If more than one lease of different ownership is dedicated to the well, have the interests of all owners been consolidated by communitization, unitization, force-pooling, etc?

☐ Yes ☐ No If answer is "yes," type of consolidation \_\_\_\_\_

If answer is "no," list the owners and tract descriptions which have actually been consolidated. (Use reverse side of this form if necessary.) \_\_\_\_\_

No allowable will be assigned to the well until all interests have been consolidated (by communitization, unitization, forced-pooling, or otherwise) or until a non-standard unit, eliminating such interests, has been approved by the Commission.



Elev. 400' x 400'  
Pad

NW Cor. 3958.8  
NE Cor. 3980.1  
SE Cor. 3974.4  
SW Cor. 3960.8

CERTIFICATION

I hereby certify that the information contained herein is true and complete to the best of my knowledge and belief.

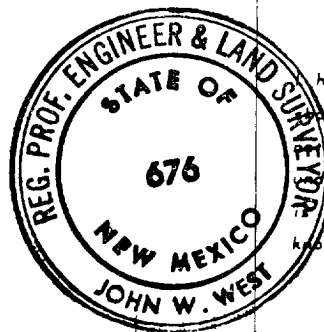
*Martin B. Muncy*

Name  
MARTIN B. MUNCY

Position  
d/b/a

Company  
METEX PIPE & SUPPLY

Date  
2/5/88



I hereby certify that the well location shown on this plat was plotted from field notes of actual surveys made by me or under my supervision, and that the same is true and correct to the best of my knowledge and belief.

Date Surveyed  
January 25, 1988

Registered Professional Engineer and/or Land Surveyor

*John W. West*

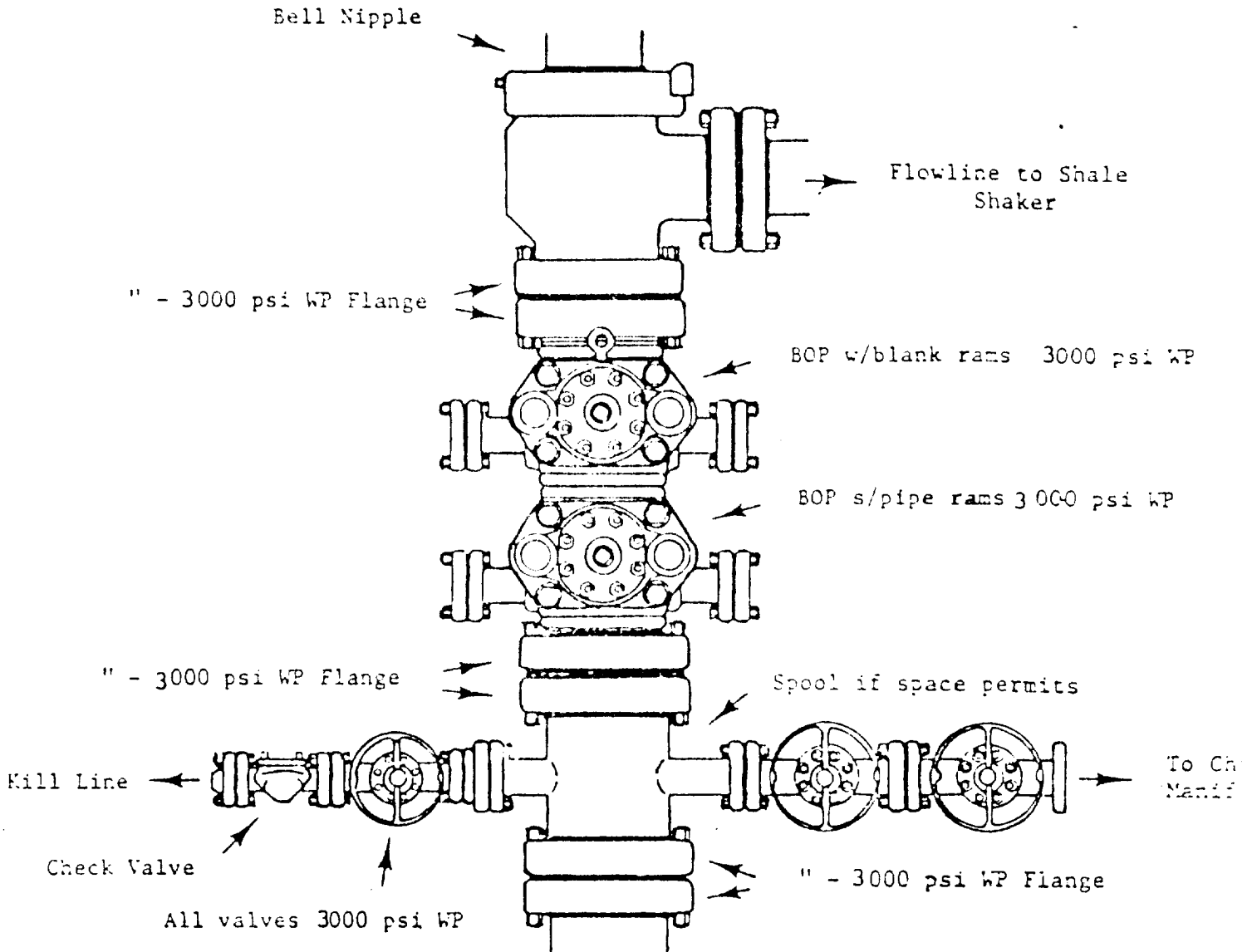
Certificate No. JOHN W. WEST 676

Ronald J. Eidson 3239

Scale: 1" = 2000'

PROPOSED BOP STACK

8 5/8" CASING



METEX PIPE and Supply

Pagesus Fad. no. 1

Eddy Co., N.M.

2970 FSL & 635 FWL

S-6, T-16 S, R-31E

EDDY Co, N.M.

# METEX PIPE & SUPPLY

LEASE: PEGASUS FEDERAL  
 FIELD: NORTH SQUARELAKE PREMIER  
 COUNTY: EDDY

WELL: #1  
 STATE: New Mexico

## TEN POINT WELL CONTROL & RESOURCE PROTECTION DATA

1. The geologic name of the surface formation \_\_\_\_\_
2. The estimated tops of important geologic markers.

| <u>Formation Name</u> | <u>Depth (top)</u> |
|-----------------------|--------------------|
| <u>Yates</u>          | <u>1757'</u>       |
| <u>Queen</u>          | <u>2593'</u>       |
| <u>Grayburg</u>       | <u>2957'</u>       |
| <u>Premier Sand</u>   | <u>3291'</u>       |
| <u>San Andres</u>     | <u>3335'</u>       |

3. The estimated depth at which anticipated water, oil and gas or other mineral-bearing formations are expected to be encountered.

| <u>Formation Name</u> | <u>Depth (Top)</u> | <u>Type of Mineral</u> |
|-----------------------|--------------------|------------------------|
| <u>Premier</u>        | <u>3291'</u>       | <u>Oil &amp; Gas</u>   |

4. The proposed casing program, including the size, grade, and weight-per-foot of each string and whether new or used. (Shown on Form 9-331C)
5. The lessee's or operator's minimum specifications for pressure control equipment which is to be used, a schematic diagram thereof showing sizes, pressure ratings, (or API series), and the testing procedures and testing frequency. (See attachment)
6. The type and characteristics of the proposed circulating medium or mediums to be employed for rotary drilling and the quantities and types of mud and weighting material to be maintained.  
See Attachment for 9-331C A sufficient quantity of mud and chemicals will be maintained at the well site to meet anticipated conditions, recognizing the time required to replenish supplies from local sources.

7. The auxiliary equipment to be used, such as (1) kelly cock, (2) floats at the bit, (3) monitoring equipment on the mud system, (4) a sub on the floor with a full opening valve to be stabbed into drill pipe when the kelly is not in the string.

A kelly cock and a sub with a full opening valve will be used.

---

8. The testing, logging, mud, and coring programs to be followed with provision made for required flexibility. (See attached sheet)
9. Any anticipated abnormal pressures or temperatures expected to be encountered or potential hazards such as hydrogen sulfide gas, along with plans for mitigating such hazards.

No abnormal pressures, temperatures, or hazardous gases are expected to be encountered; however, prudent drilling operations will be maintained to guard against such hazards.

---

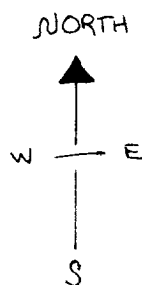
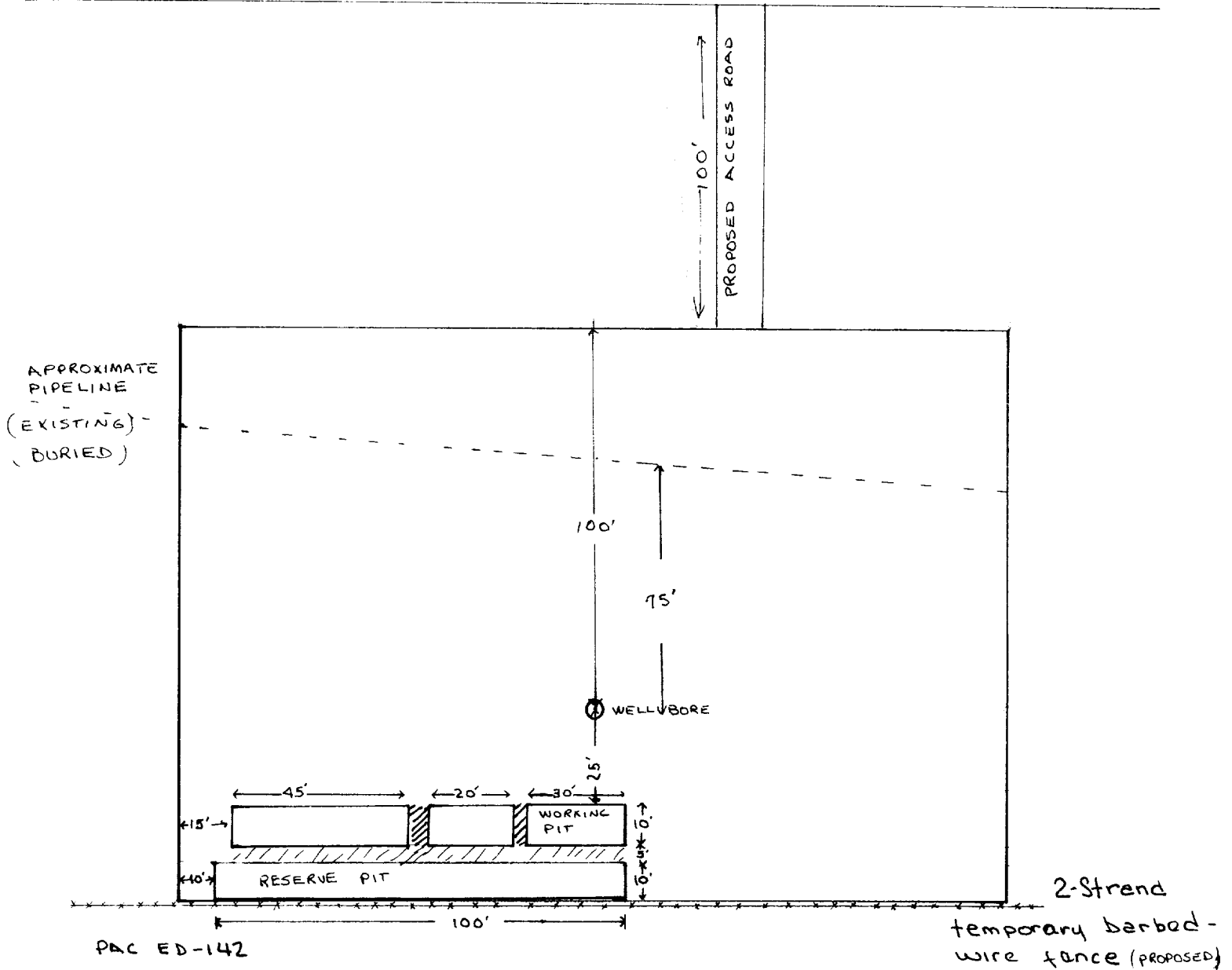
10. The anticipated starting date and duration of the operations.

Starting Date: 3-10-88

Duration of Operations 15 Days

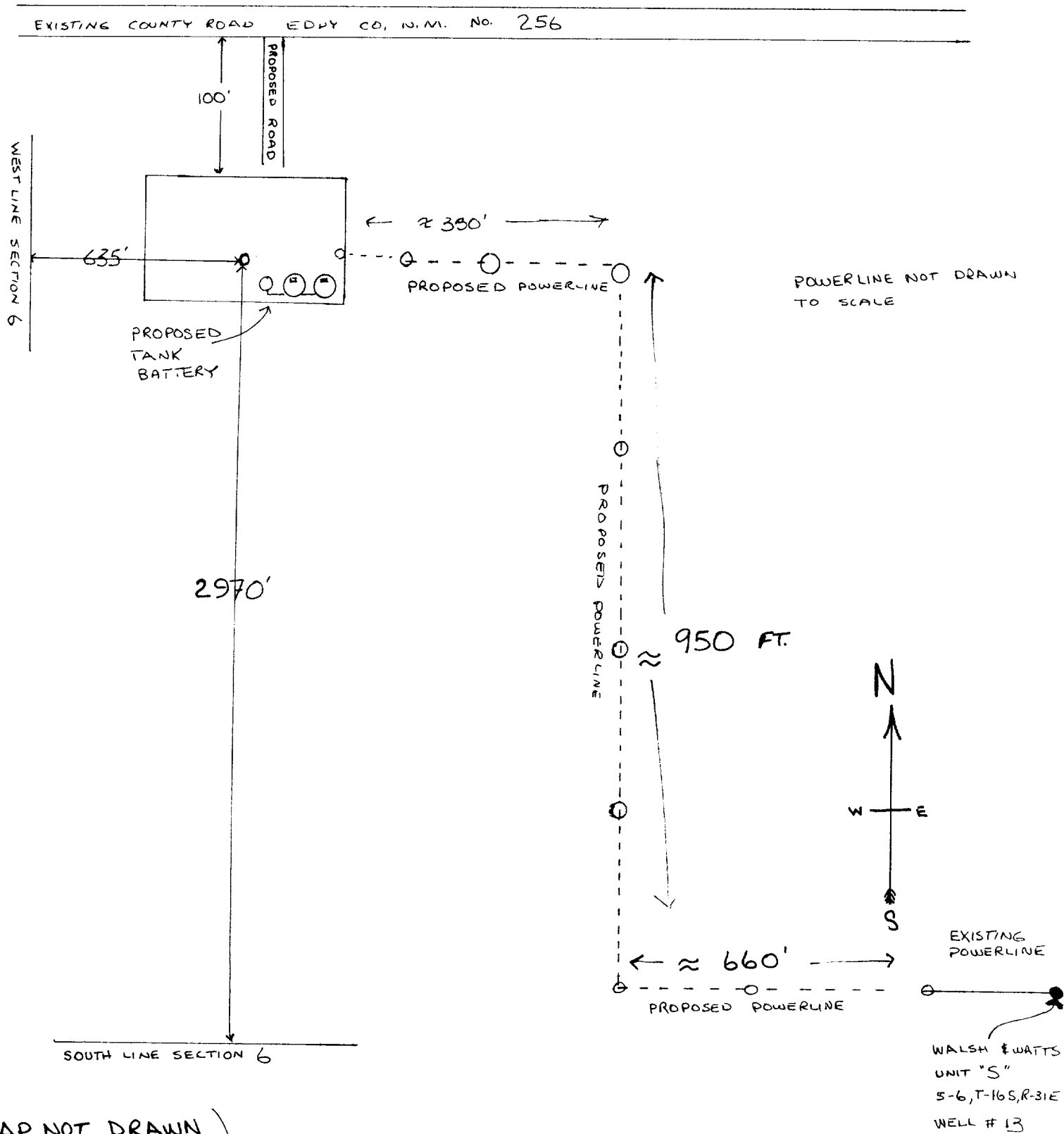
PLAT FOR PIT LOCATION ARTESIA FISHING TOOL RIG # 1  
MATOX PIPE & SUPPLY  
PEGASUS FED. #1  
2970' FSL & 635' FWL  
S-6, T-16S, R-31E

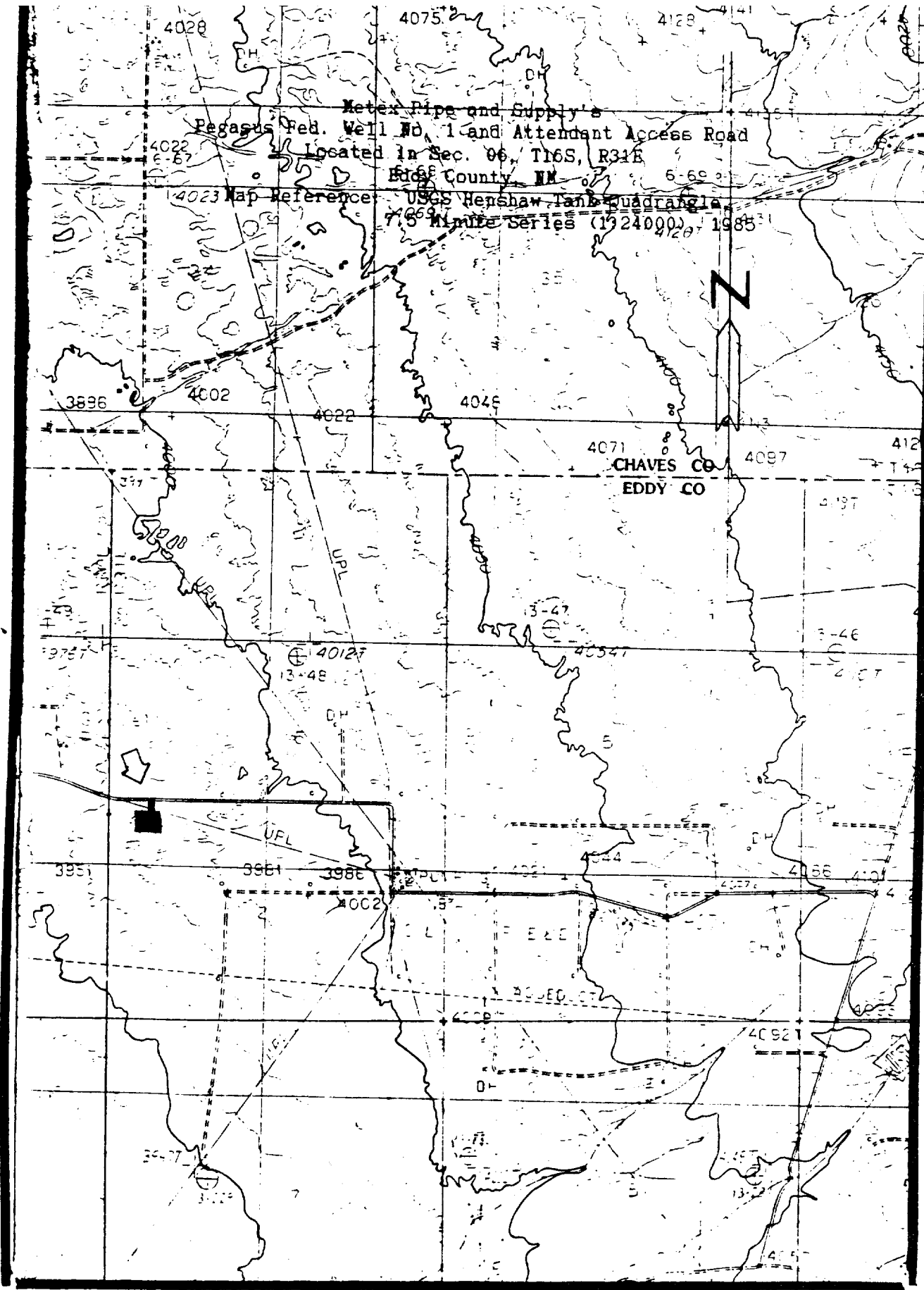
EXISTING COUNTY ROAD # 256 EDDY CO., N.M.



LAYOUT

MEASUREMENTS  
PEG. US FED. NO. 1  
2970' FSL & 635 FWL  
S-6, T-16S, R-31E  
Eddy Co. N.M.  
LSE. #





EXISTING ROAD COUNTY ROAD #256  
PROPOSED ROAD

METEX PIPE & SUPPLY  
AREA MAP  
PEGASUS FED. No 1  
Eddy Co. N.M.