

NO. OF COPIES RECEIVED	
DISTRIBUTION	
SANTA FE	1
FILE	1
U.S.G.S.	2
LAND OFFICE	1
OPERATOR	1

RECEIVED

SEP 16 1981

5A. Indicate Type of Lease  
STATE ☒ FEE ☐  
5. State Oil & Gas Lease No.  
L-4853

APPLICATION FOR PERMIT TO DRILL, DEEPEN, OR PLUG BACK

1a. Type of Work

ARTESIA, OFFICE

b. Type of Well

DRILL ☒

DEEPEN ☐

PLUG BACK ☐

OIL WELL ☒

GAS WELL ☐

OTHER

SINGLE ZONE ☐

MULTIPLE ZONE ☐

2. Name of Operator

RPM ENERGY, INC.

3. Address of Operator

613 Commercial Bank Tower, Midland TX, 79701

4. Location of Well

UNIT LETTER 1D LOCATED 330 FEET FROM THE North LINE

AND

330

FEET FROM THE

west

East

LINE OF SEC. 16

TWP. 16S

RGE. 26E

NMPM

7. Unit Agreement Name

8. Farm or Lease Name  
State

9. Well No.

3

10. Field and Pool, or Wildcat  
undesigned San And

12. County

EDDY

19. Proposed Depth  
1600'

19A. Formation  
San Andres

20. Rotary or C.T.  
Rotary

21. Elevations (Show whether DF, RT, etc.)

3353 GL

21A. Kind & Status Plug. Bond  
Blanket Bond

21B. Drilling Contractor  
S&B Drilling

22. Approx. Date Work will start  
Sept. 17, 1981

23.

PROPOSED CASING AND CEMENT PROGRAM

SIZE OF HOLE	SIZE OF CASING	WEIGHT PER FOOT	SETTING DEPTH	SACKS OF CEMENT	EST. TOP
9 1/2"	7"	17#	1030 1100	360	
6 1/4"	4 1/2"	9.5#	1600	200	

Field Development (San Andres)

APPROVAL VALID FOR 180 DAYS  
PERMIT EXPIRES 3-16-82  
UNLESS DRILLING UNDERWAY

IN ABOVE SPACE DESCRIBE PROPOSED PROGRAM: IF PROPOSAL IS TO DEEPEN OR PLUG BACK, GIVE DATA ON PRESENT PRODUCTIVE ZONE AND PROPOSED NEW PRODUCTIVE ZONE. GIVE BLOWOUT PREVENTER PROGRAM, IF ANY.

I hereby certify that the information above is true and complete to the best of my knowledge and belief.

Signed Roy L. Jones Title Roy L. Jones, Vice President Date 09/15/81

(This space for State Use)

APPROVED BY W.A. Gressett TITLE SUPERVISOR, DISTRICT II DATE 9-16-81

CONDITIONS OF APPROVAL, IF ANY:

Notify N.M.O.C.C. in sufficient  
time to witness cementing  
the 7" casing

Cement must be circulated to  
surface behind 7" + 4 1/2" casing

All distances must be from the outer boundaries of the Section.

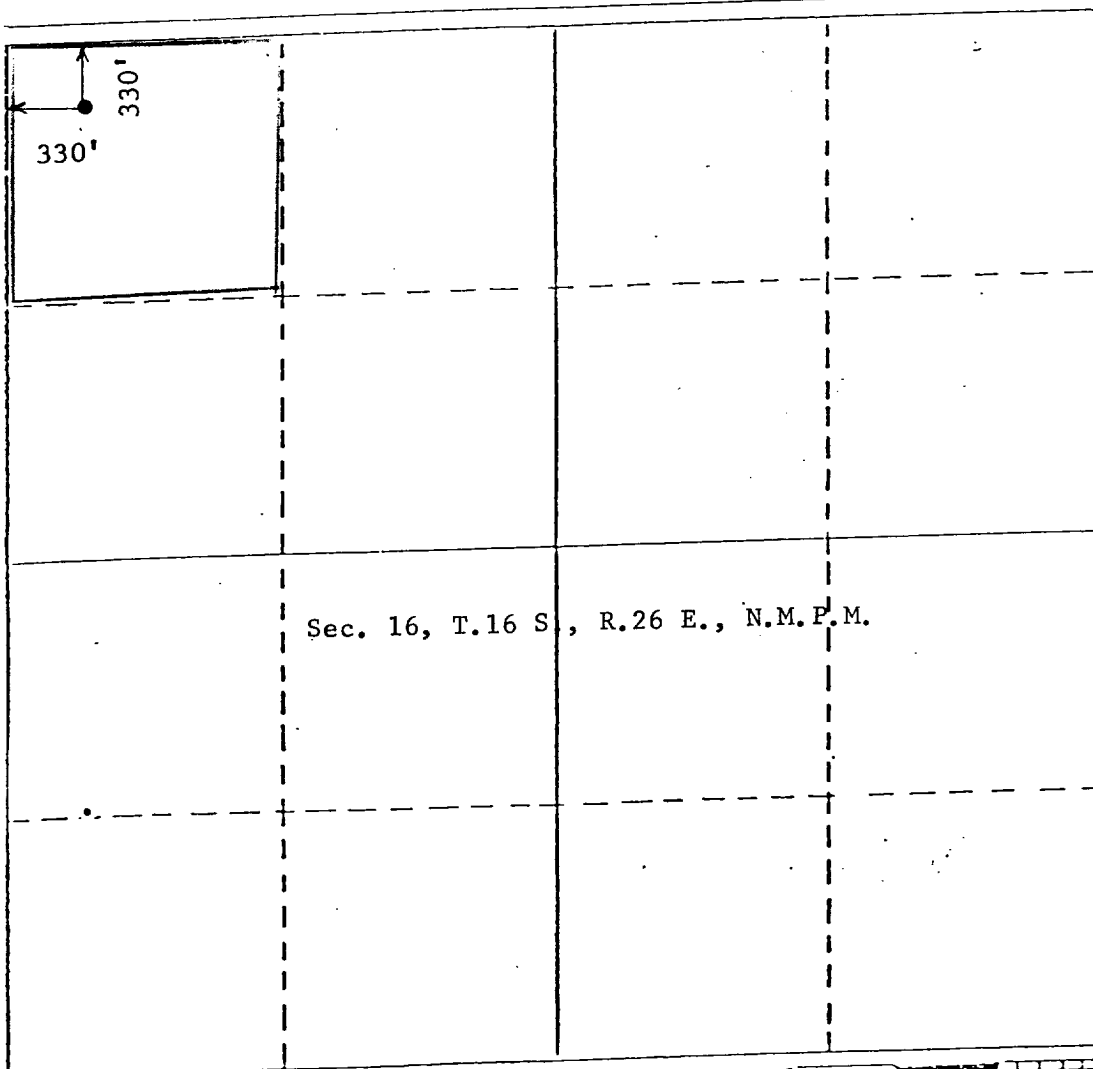
Lease		State		Well No. #3
Operator RPM Energy Inc	Section 16	Township 16 South	Range 26 East	County Eddy County
Actual Postage Location of Well:				
330	feet from the	North	line and	330
				feet from the
				West
				line
Ground Level Elev. 3353	Producing Formation San Andres	Pool Undesignated - SA	Dedicated Acreage: 40 Acres	

1. Outline the acreage dedicated to the subject well by colored pencil or hatchure marks on the plat below.
2. If more than one lease is dedicated to the well, outline each and identify the ownership thereof (both as to working interest and royalty).
3. If more than one lease of different ownership is dedicated to the well, have the interests of all owners been consolidated by communitization, unitization, force-pooling, etc?

☐ Yes ☐ No If answer is "yes," type of consolidation \_\_\_\_\_

If answer is "no," list the owners and tract descriptions which have actually been consolidated. (Use reverse side of this form if necessary.) \_\_\_\_\_

No allowable will be assigned to the well until all interests have been consolidated (by communitization, unitization, forced-pooling, or otherwise) or until a non-standard unit, eliminating such interests, has been approved by the Division.



# CERTIFICATION

I hereby certify that the information contained herein is true and complete to the best of my knowledge and belief.

Name  
*Roy J. Jones*  
Position  
Vice Pres,  
Company  
RPM ENERGY INC.  
Date  
September 16, 1981

I hereby certify that the well location shown on this plat was plotted from field notes of actual surveys made by me or under my supervision, and that the same is true and correct to the best of my knowledge and belief.

Date Surveyed  
September 15, 1981  
Registered Professional Engineer and/or Land Surveyor  
John D. Jaquess, P.E. & L.S.  
Certificate No.  
6290

