

UNITED STATES  
DEPARTMENT OF THE INTERIOR  
BUREAU OF LAND MANAGEMENT

SUBMIT IN 'PLICATE'  
(Other instructions on  
reverse side)

30-015-26004  
Form approved.  
Budget Bureau No. 1004-0136  
Expires August 31, 1985

APPLICATION FOR PERMIT TO DRILL, DEEPEN, OR PLUG BACK

1a. TYPE OF WORK

DRILL ☒

DEEPEN ☐

PLUG BACK ☐

b. TYPE OF WELL

OIL  
WELL ☒

GAS  
WELL ☐

OTHER

SINGLE  
ZONE ☐

MULTIPLE  
ZONE ☐

2. NAME OF OPERATOR

Bill Fenn, Inc.

RECEIVED

3. ADDRESS OF OPERATOR

P. O. Drawer 569 Giddings, TX 78942

4. LOCATION OF WELL (Report location clearly and in accordance with any State requirements\*)

At surface

1980' FNL & 1980' FEL

At proposed prod. zone

same

14. DISTANCE IN MILES AND DIRECTION FROM NEAREST TOWN OR POST OFFICE\*

11 miles northeast of Loco Hills, NM

O. C. D.

ARTESIA, OFFICE

10. DISTANCE FROM PROPOSED\*

LOCATION TO NEAREST  
PROPERTY OR LEASE LINE, FT.  
(Also to nearest drlg. unit line, if any)

660'

16. NO. OF ACRES IN LEASE

320

17. NO. OF ACRES ASSIGNED  
TO THIS WELL

40

18. DISTANCE FROM PROPOSED LOCATION\*  
TO NEAREST WELL, DRILLING, COMPLETED,  
OR APPLIED FOR, ON THIS LEASE, FT.

1320'

19. PROPOSED DEPTH

4,000'

20. ROTARY OR CABLE TOOLS

Rotary

21. ELEVATIONS (Show whether DF, RT, GR, etc.)

3961.3 GL

22. APPROX. DATE WORK WILL START\*

November 1, 1988

23.

PROPOSED CASING AND CEMENTING PROGRAM

SIZE OF HOLE	SIZE OF CASING	WEIGHT PER FOOT	SETTING DEPTH	QUANTITY OF CEMENT
12 1/4"	8 5/8"	24#	400'	250 sx Prem. Plus circulate
7 7/8"	5 1/2"	17#	4,000'	400 sx HLC w/flocele
				300 sx Prem Plus Circ. to surface

Mud Program: 0' - 400' Fresh water gel/lime, 8.4-8.9 wt., Vis. 32-36.  
400' - 4,000' Brine water 10.0 mud wt., Vis. 27-29, no WL control.

BOP Program: 3,000 lb. double open face flanged U blowout preventer. See Exhibit "D".

IN ABOVE SPACE DESCRIBE PROPOSED PROGRAM: If proposal is to deepen or plug back, give data on present productive zone and proposed new productive zone. If proposal is to drill or deepen directionally, give pertinent data on subsurface locations and measured and true vertical depths. Give blowout preventer program, if any.

24.

SIGNED

*Bill Fenn, Inc.*

TITLE

Agent for:

Bill Fenn, Inc.

DATE October 14, 1988

(This space for Federal or State office use)

PERMIT NO.

APPROVAL DATE

AREA MANAGER

CARLEND RESOURCES, INC.

APPROVED BY

*Sandra Prenta*

TITLE

DATE

10-31-88

CONDITIONS OF APPROVAL, IF ANY:

\*See Instructions On Reverse Side

**MEXICO OIL CONSERVATION COMMISSION**  
**WELL LOCATION AND ACREAGE DEDICATION PLAT**

Form C-102  
 Supersedes C-128  
 Effective 1-1-65

All distances must be from the outer boundaries of the Section

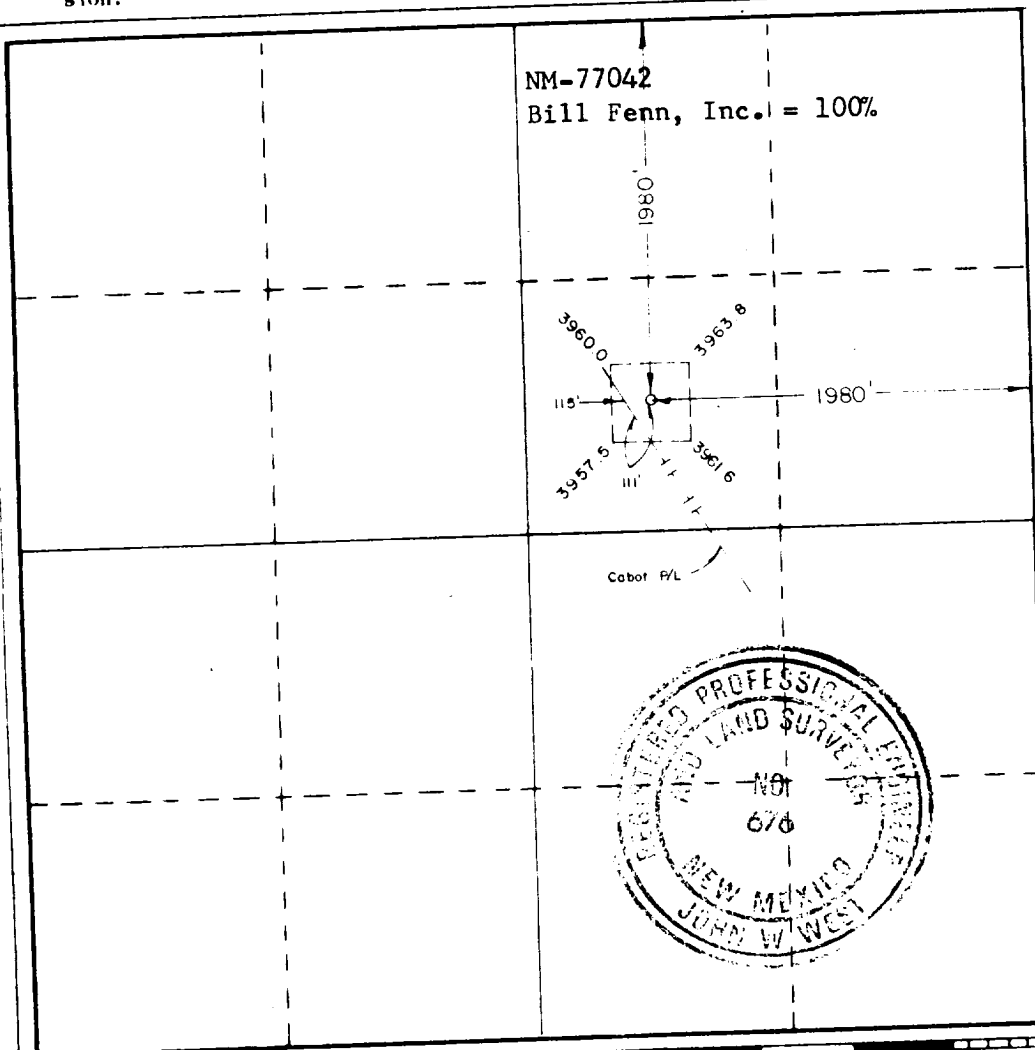
Operator <b>Bill Fenn Inc.</b>			Lease <b>Grandview Federal</b>		Well No. <b>1</b>
Unit Letter <b>G</b>	Section <b>20</b>	Township <b>16 South</b>	Range <b>31 East</b>	County <b>Eddy</b>	
Actual Footage Location of Well: <b>1980</b> feet from the <b>North</b> line and <b>1980</b> feet from the <b>East</b> line					
Ground Level Elev. <b>3961.3</b>	Producing Formation <b>Lovington</b>	Pool <b>VVD Square Lake</b>		Dedicated Acreage: <b>40</b> Acres	

- Outline the acreage dedicated to the subject well by colored pencil or hachure marks on the plat below.
- If more than one lease is dedicated to the well, outline each and identify the ownership thereof (both as to working interest and royalty).
- If more than one lease of different ownership is dedicated to the well, have the interests of all owners been consolidated by communitization, unitization, force-pooling, etc?

☐ Yes    ☐ No    If answer is "yes" type of consolidation \_\_\_\_\_

If answer is "no," list the owners and tract descriptions which have actually been consolidated. (Use reverse side of this form if necessary.) \_\_\_\_\_

No allowable will be assigned to the well until all interests have been consolidated (by communitization, unitization, forced-pooling, or otherwise) or until a non-standard unit, eliminating such interests, has been approved by the Commission.



**CERTIFICATION**

I hereby certify that the information contained herein is true and complete to the best of my knowledge and belief.

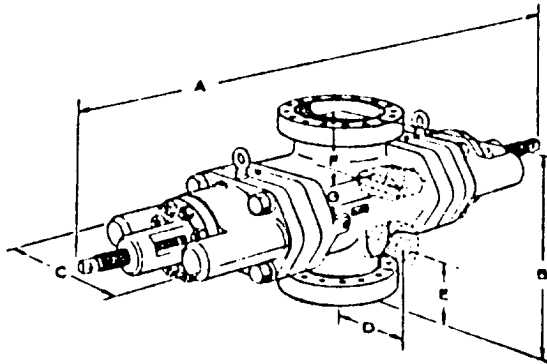
Name  
**George R. Smith**  
 Position  
**Agent For:**  
 Company  
**Bill Fenn, Inc.**  
 Date  
**9/14/88**

I hereby certify that the well location shown on this plat was plotted from field notes of actual surveys made by me or under my supervision, and that the same is true and correct to the best of my knowledge and belief.

Date Surveyed  
**September 21, 1988**  
 Registered Professional Engineer and/or Land Surveyor

*John W. West*  
 Certificate No. **JOHN W. WEST, 676**  
**RONALD J. EIDSON, 3239**

## U BLOWOUT PREVENTER ENGINEERING DATA



Single Open Face Flanged U Blowout Preventer

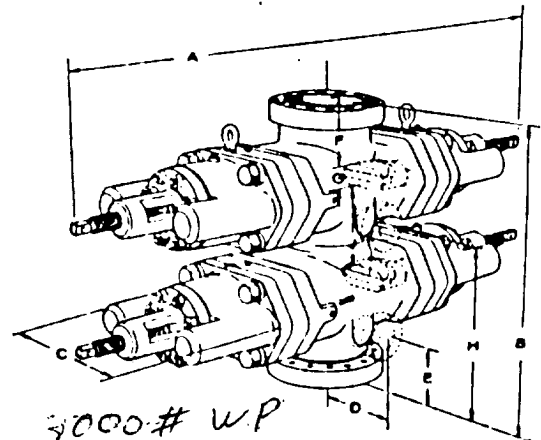
**Side Outlets** to 4" size (7-1/16" on 26-3/4" preventers) can be provided beneath each set of rams, on either or both sides of U preventers. Side outlet flanges are open face and have the same pressure rating as the vertical run flanges. Valve removal preparations can be provided. To obtain a quotation, the number and size of outlets should be specified.

**Flanges** conform to API Standard 6A. Type 6BX flanges are standard for 10,000 psi, 15,000 psi, and 20,000 psi working pressures and for 5000 psi working pressures for 13-5/8" and larger bore preventers.

Although most preventers have open face flanges or Cameron clamp hubs, preventers with studded flanges can be furnished.

**Sizes and Dimensions** are in inches. The over-all length "A" given in the tables does not include the optional wedgelocks. No spacers between rams are included in the table of dimensions of double ram models. Preventers with spacers to clear tool joints can be obtained on special order. For information on preventers with spacers, or sizes not listed, consult your Cameron representative.

**Hydraulic Control Connections** to operate rams and bonnets are 1" NPT. There are two connections for each set of rams. Hydraulic ram lock connections are 1/2" NPT.



Double Open Face Flanged U Blowout Preventer

**Engineering Data Designations. See Charts on Following Page**

- A-1 Over-all length, bonnets closed, locking screws locked
- A-2 Over-all length, ram change, bonnets opened, locking screws unlocked
- B-1 Over-all height flanged
- B-2 As above, with Cameron clamp hubs
- C Over-all width without side outlets (max. width)
- D Centerline of preventer to outlet flange or hub face. Distance is variable.
- E-1 Centerline of side outlet (outlet below lower rams in double model) to bottom flange face
- E-2 As above, to bottom hub face
- F-1 Top of upper ram to top flange face
- F-2 As above, to top hub face
- G Ram height
- H-1 Centerline of side outlet between rams to bottom flange face
- H-2 As above, to bottom hub face
- J Top of lower ram to bottom of upper ram

# APPLICATION FOR DRILLING

BILL FENN, INC.  
Grandview Federal, Well No. 1  
1980' FNL & 1980' FEL, Sec. 20-T16S-R31E  
Eddy County, New Mexico  
Lease No.: NM-77042  
(Development Well)

In conjunction with Form 3160-3, Application for Permit to Drill subject well, Bill Fenn, Inc. submits the following items of pertinent information in accordance with BLM requirements:

1. The geologic surface formation is sand, sand stone, and redbed.

2. Estimated top of geologic markers are as follows:

Top of salt	700'	Premier	3,280'
Base of salt	1,625'	San Andres	3,400'
Greyburg	3,100'	Lovington	3,520'

3. The estimated depths at which anticipated water, oil or gas formations are expected to be encountered.

Fresh water: 300 ft. or less in sandstones Triassic Dockum group.

Salt water: Queen at 2,670'

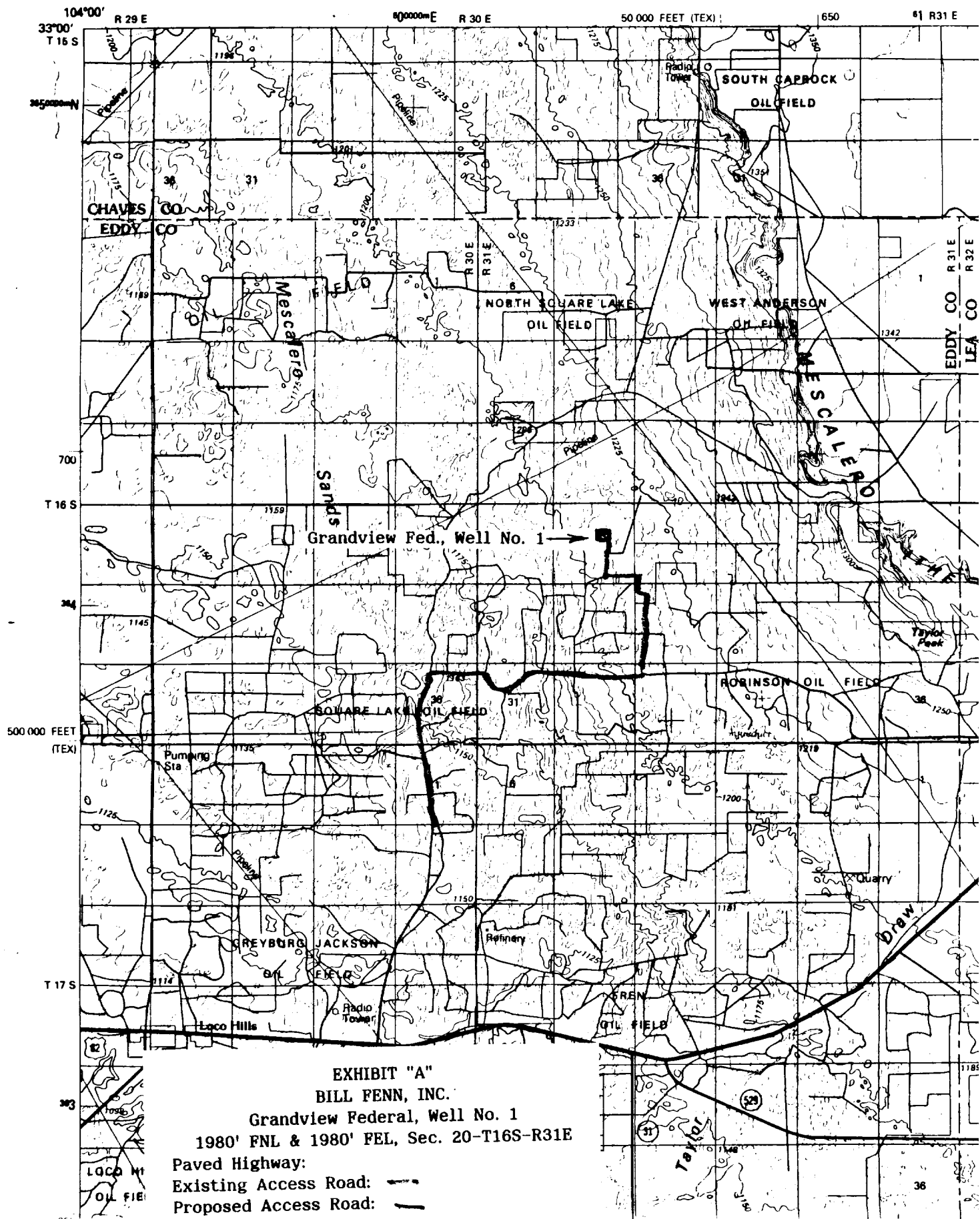
Oil: Greyburg at 3,200 - 3,230'  
Premier at 3,350 - 3,380'  
Lovington at 3,500 - 3,520'

Gas: Queen at 2,950 - 2,970'

4. Proposed Casing Program: See Form 3160-3
5. Pressure Control Equipment: See Form 3160-3 and Exhibit D.
6. Mud Program: See Form 3160-3 and Exhibit E.
7. Auxiliary Equipment: Blowout preventer, kelly cock and stabbing valve.
8. Testing, Logging and Coring Program:  

O. H. Logging: 2,000' - 4,000'	CNL/LDT/DLL/MSFL/GR
C. H. Logging: 2,000' - 4,000'	CBL/VDL
Drill Stem Tests: None.	
Coring: None.	
9. No abnormal pressure or temperatures are anticipated.
10. Anticipated starting date: November 1, 1988.  
Anticipated completion of drilling operations: Approximately 10 days.

(ROSWELL)



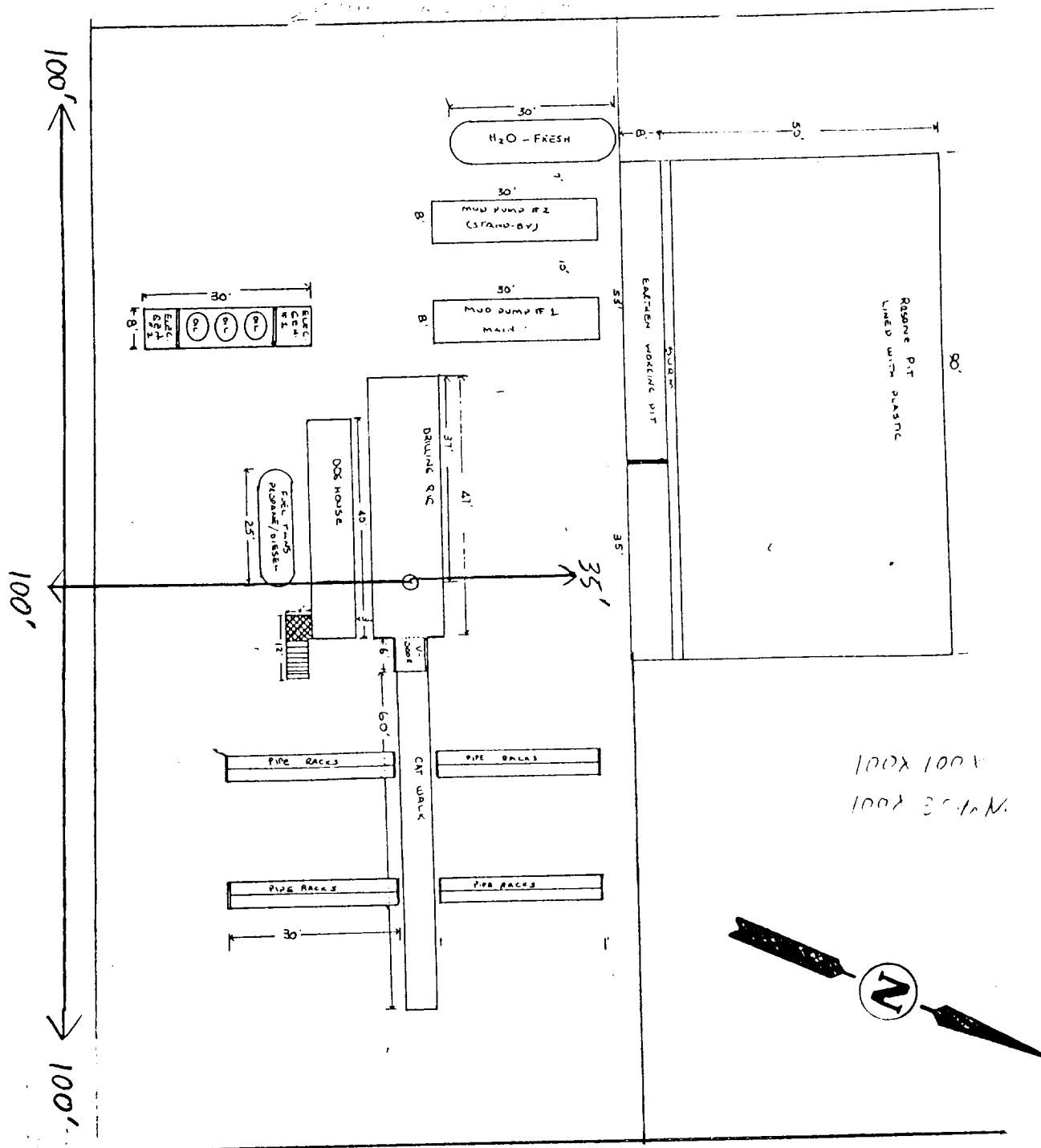


EXHIBIT "D"  
 BILL FENN, INC.  
 Grandview Federal, Well No. 1  
 Rig Layout