



**N MEXICO OIL CONSERVATION COMMISSION  
WELL LOCATION AND ACREAGE DEDICATION PLAT**

Form C-102  
Supersedes C-128  
Effective 1-1-65

All distances must be from the outer boundaries of the Section.

Operator <b>YATES PETROLEUM CORPORATION</b>			Lease <b>Norte Hills YW Federal</b>		Well No. <b>1</b>
Unit Letter <b>N</b>	Section <b>28</b>	Township <b>16 South</b>	Range <b>30 East</b>	County <b>Eddy County, N.M.</b>	
Actual Footage Location of Well: <b>330</b> feet from the <b>South</b> line and <b>2310</b> feet from the <b>West</b> line					
Ground Level Elev. <b>3751.</b>	Producing Formation <b>San Andres</b>		Pool <b>Squarehole Grayburg S.A.</b>		Dedicated Acreage: <b>40</b> Acres

1. Outline the acreage dedicated to the subject well by colored pencil or hatchure marks on the plat below.
2. If more than one lease is dedicated to the well, outline each and identify the ownership thereof (both as to working interest and royalty).
3. If more than one lease of different ownership is dedicated to the well, have the interests of all owners been consolidated by communitization, unitization, force-pooling, etc?

☐ Yes ☒ No If answer is "yes," type of consolidation \_\_\_\_\_

If answer is "no," list the owners and tract descriptions which have actually been consolidated. (Use reverse side of this form if necessary.) \_\_\_\_\_

No allowable will be assigned to the well until all interests have been consolidated (by communitization, unitization, forced-pooling, or otherwise) or until a non-standard unit, eliminating such interests, has been approved by the Commission.

**CERTIFICATION**

I hereby certify that the information contained herein is true and complete to the best of my knowledge and belief.

*Ken Beardemphl*

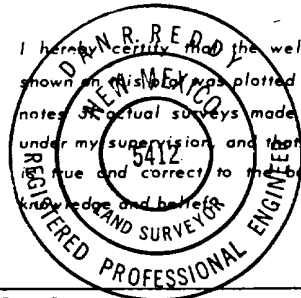
Name  
**KEN BEARDEMPHL**

Position  
**LANDMAN**

Company  
**Yates, Pet. Corp.**

Date  
**8-3-89**

I hereby certify that the well location shown on this plat was plotted from field notes of actual surveys made by me or under my supervision, and that the same are true and correct to the best of my knowledge and belief.

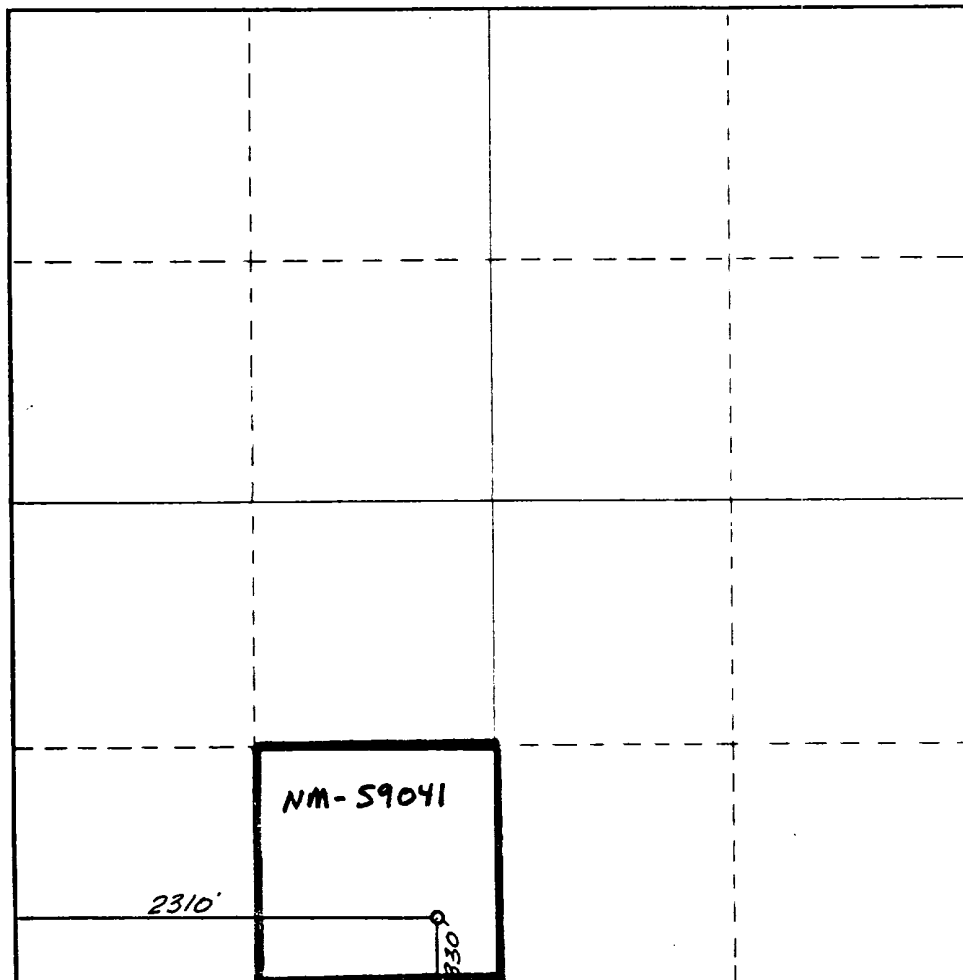


Date Surveyed  
**July 27, 1989**

Registered Professional Engineer and/or Land Surveyor

*D. R. Reddy*

Certificate No.  
**NM PE&LS NO. 5412**



0 330 660 990 1320 1650 1980 2310 2640 2000 1500 1000 500 0

YATES PETROLEUM CORPORATION  
Norte Hills "YW" Fed. #1  
330' FSL & 2310' FWL  
Section 28-T16S-R30E  
Eddy County, New Mexico

In conjunction with Form 9-331C, Application for Permit to Drill subject well, Yates Petroleum Corporation submits the following ten items of pertinent information in accordance with BLM requirements.

1. The geological surface formation is Sandy Alluvium.
2. The estimated tops of geologic markers are as follows:

Yates	1328'
Seven Rivers	1416'
Queen	2176'
San Andres	2963'
TD	3750'
3. The estimated depths at which anticipated water, oil or gas formations are expected to be encountered:  
  
Water: Approximately 150'  
Oil or Gas: 2176', 2963'
4. Proposed Casing Program: See Form 9-331C.
5. Pressure Control Equipment: See Form 9-331C and Exhibit B
6. Mud Program: See Form 9-331C.
7. Auxiliary Equipment: Kelly cock, pit level indicators and flow sensor equipment; sub with full opening valve on floor, drill pipe connection.
8. Testing, Logging and Coring Program:  
  
Samples: Under surface casing  
DST's: As warranted  
Coring: As warranted  
Logging: CNL/FDC from TD to casing with GR-CNL on to surface; DLL with TD to casing.
9. No abnormal pressures or temperatures are anticipated.
10. Anticipated starting date: As soon as possible after approval.

MULTI-POINT SURFACE USE AND OPERATIONS PLAN  
YATES PETROLEUM CORPORATION  
NORTE HILLS "YW" FED. #1  
330' FSL and 2310' FWL  
Section 28-T16S-R30E  
Eddy County, New Mexico

This plan is submitted with Form 9-331C, Application for Permit to Drill, covering the above described well. The purpose of this plan is to describe the location of the proposed well, the proposed construction activities and operations plan, the magnitude of surface disturbance involved and the procedures to be followed in rehabilitating the surface after completion of the operations, so that a complete appraisal can be made of the environmental effect associated with the operations.

1. EXISTING ROADS:

Exhibit A is a portion of a BLM color quad map showing the well and roads in the vicinity of the proposed location. The proposed wellsite is located approximately 4.5 miles north of Loco Hills, New Mexico and the access route to the location is indicated in red and green on Exhibit A.

DIRECTIONS:

- A. Go on Eddy County Road (217) Hagerman Cutoff Road north for 4.5 miles.
- B. New road will start here.

2. PLANNED ACCESS ROAD

- A. The proposed new access road will be approximately 2000' in length from point of origin to the southwest edge of the drilling pad. The road will lie in a west to east direction.
- B. The new road will be 14 feet in width (driving surface).
- C. The new road will be bladed with drainage on one side. One turnout will be built.
- D. The route of the road is visible.

3. LOCATION OF EXISTING WELL

- A. There is drilling activity within a one mile radius of the wellsite.
- B. Exhibit B shows existing wells within a one-mile radius of the proposed wellsite.

4. LOCATION OF EXISTING AND/OR PROPOSED FACILITIES:

- A. There are no production facilities on this lease at the present time.
- B. In the event that the well is productive, the necessary production facilities will be installed on the drilling pad. If the well is productive oil, a gas or diesel self-contained unit will be used to provide the necessary power. No power will be required if the well is productive gas.

5. LOCATION AND TYPE OF WATER SUPPLY:

- A. It is planned to drill the proposed well with a fresh water system. The water will be obtained from commercial sources and will be hauled to the location by truck over the existing and proposed roads shown in Exhibit A.

6. SOURCE OF CONSTRUCTION MATERIALS:

- 1. Federal pit in the SW/4SW/4 of Section 28-T16S-R30E.

7. METHODS OF HANDLING WASTE DISPOSAL:

- A. Drill cuttings will be disposed of in the reserve pits.
- B. Drilling fluids will be allowed to evaporate in the reserve pits until the pits are dry.
- C. Water produced during operations will be collected in tanks until hauled to an approved disposal system, or separate disposal application will be submitted for appropriate approval.
- D. Oil produced during operations will be stored in tanks until sold.
- E. Current laws and regulations pertaining to the disposal of human waste will be complied with.
- F. Trash, waste paper, garbage and junk will be buried in a separate trash pit and covered with a minimum of 24 inches of dirt. All waste material will be contained to prevent scattering by the wind.
- G. All trash and debris will be buried or removed from the wellsite within 30 days after finishing drilling and/or completion operations.

8. ANCILLIARY FACILITIES:

- A. None required.

Norte Hills "YW" Fed. #1

Page 3

9. WELLSITE LAYOUT:

- A. Exhibit C shows the relative location and dimensions of the well pad, the reserve pits, the location of the drilling equipment, rig orientation and access road approach. A cross section of drill pad with approximate cuts, fills and pad orientation is shown on Exhibit E.
- B. The reserve pits will not be plastic lined.
- C. A 400' X 400' area has been staked and flagged.

10. PLANS FOR RESTORATION OF THE SURFACE:

- A. After finishing drilling and/or completion operations, all equipment and other material not needed for further operations will be removed. The location will be cleaned of all trash and junk to leave the wellsite in as aesthetically pleasing a condition as possible.
- B. Unguarded pits, if any, containing fluids will be fenced until they have dried and been levelled.
- C. If the proposed well is non-productive, all rehabilitation and/or vegetation requirements of the BLM will be complied with and will be accomplished as expeditiously as possible. All pits will be filled level within 90 days after abandonment.

11. SURFACE OWNERSHIP: The surface ownership and mineral ownership is federally administered by the Bureau of Land Management.

12. OTHER INFORMATION:

- A. Topography: Refer to the archaeological report for a description of the topography, flora, fauna, soil characteristics, dwellings, historical and cultural sites.
- B. The primary surface use is for grazing.

13. OPERATOR'S REPRESENTATIVE:

A. Through A.P.D. Approval:  
  
Ken Beardemphl, Landman  
Yates Petroleum Corporation  
105 South Fourth Street  
Artesia, New Mexico 88210  
505-748-1471

B. Through Drilling Operations:  
  
Al Springer, Drilling Superintendent  
Yates Petroleum Corporation  
105 South Fourth Street  
Artesia, New Mexico 88210  
505-748-1471

Norte Hills "YW" Fed. #1

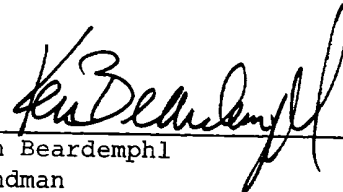
Page 4

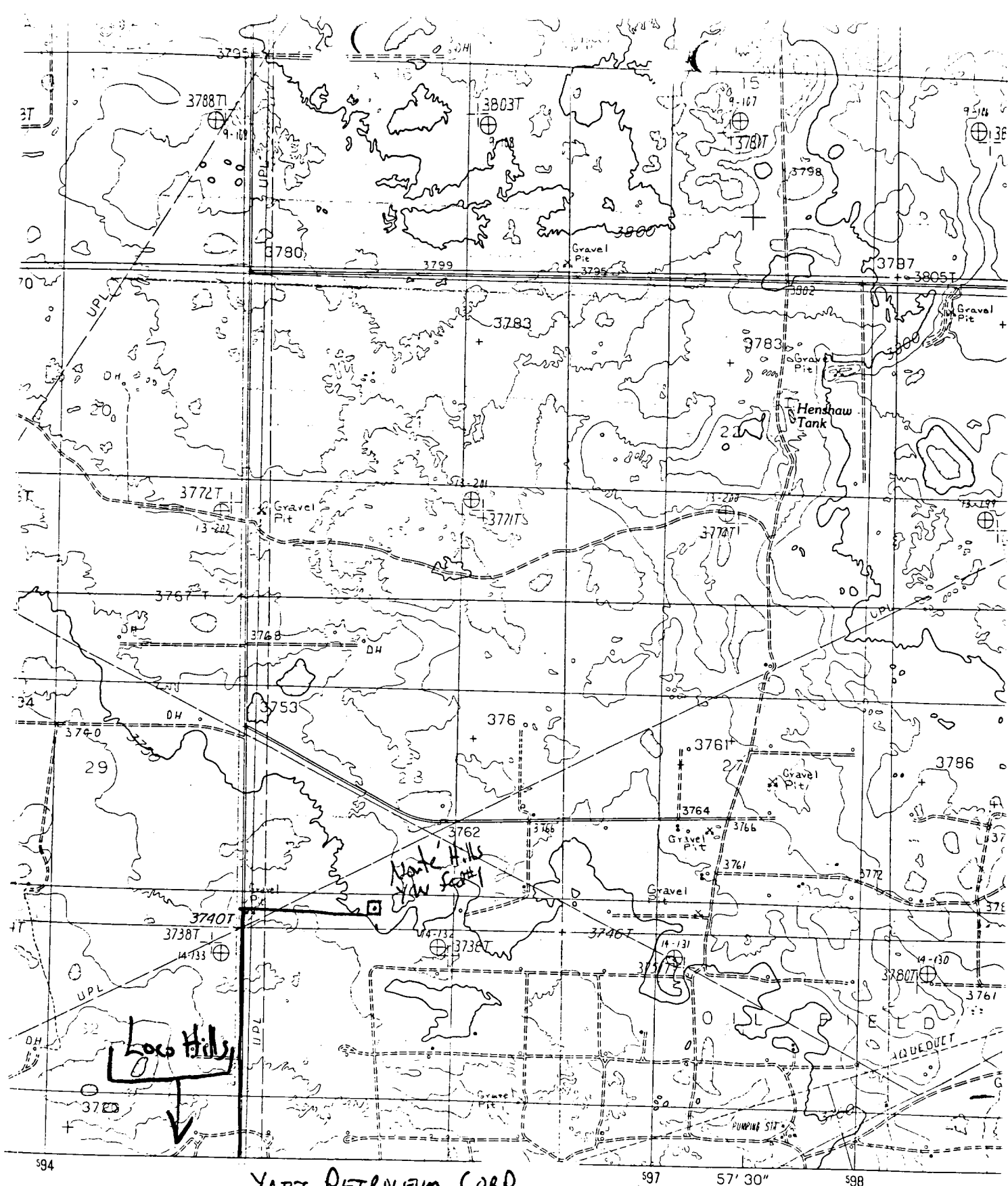
15. CERTIFICATION:

I hereby certify that I, or persons under my direct supervision, have inspected the proposed drillsite and access route, that I am familiar with the conditions which presently exist; that the statements made in this plan are to the best of my knowledge, true and correct; and, that the work associated with the operations proposed herein will be performed by Yates Petroleum Corporation and its contractors and subcontractors in conformity with this plan and the terms and conditions under which it is approved. This statement is subject to the provisions of 18 U.S.C. 1001 for the filing of a false statement.

Date

8-8-89

  
\_\_\_\_\_  
Ken Beardemphl  
Landman

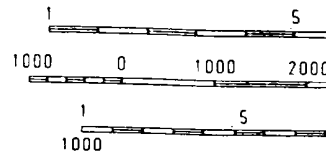


ED BY THE UNITED STATES  
 Y...  
 FROM AERIAL PHOTOGRAPHS TAKE  
 NED ... 1979 MAP EDI  
 N...  
 METER UNIVERSAL TRANSVERSE MEI  
 FOOT STATE GRID TICKS...  
 DECLINATION...  
 FTIC NORTH DECLINATION...  
 ATUM... NATIONAL GEODET  
 AL DATUM... 1927  
 on the predicted North Ame  
 c projection lines as shown b

YATES PETROLEUM CORP.  
 Norté Hills "Yw" Sect. #1  
 330' FSL & 2310' FwL  
 Sec. 28 T16S- R30E  
 Eddy Co.  
 EXHIBIT A

EXHIBIT A

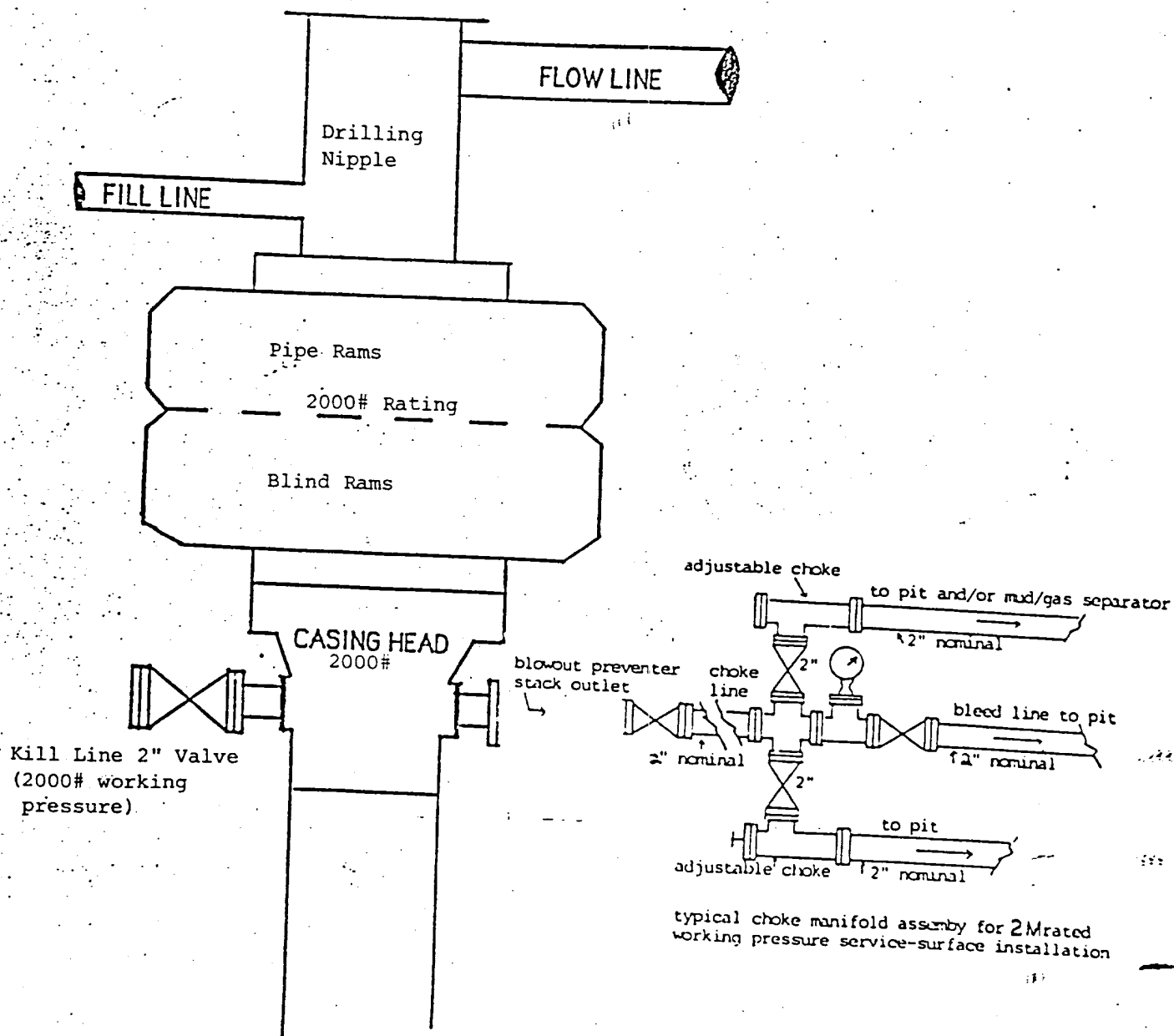
NAL MAP  
 on original





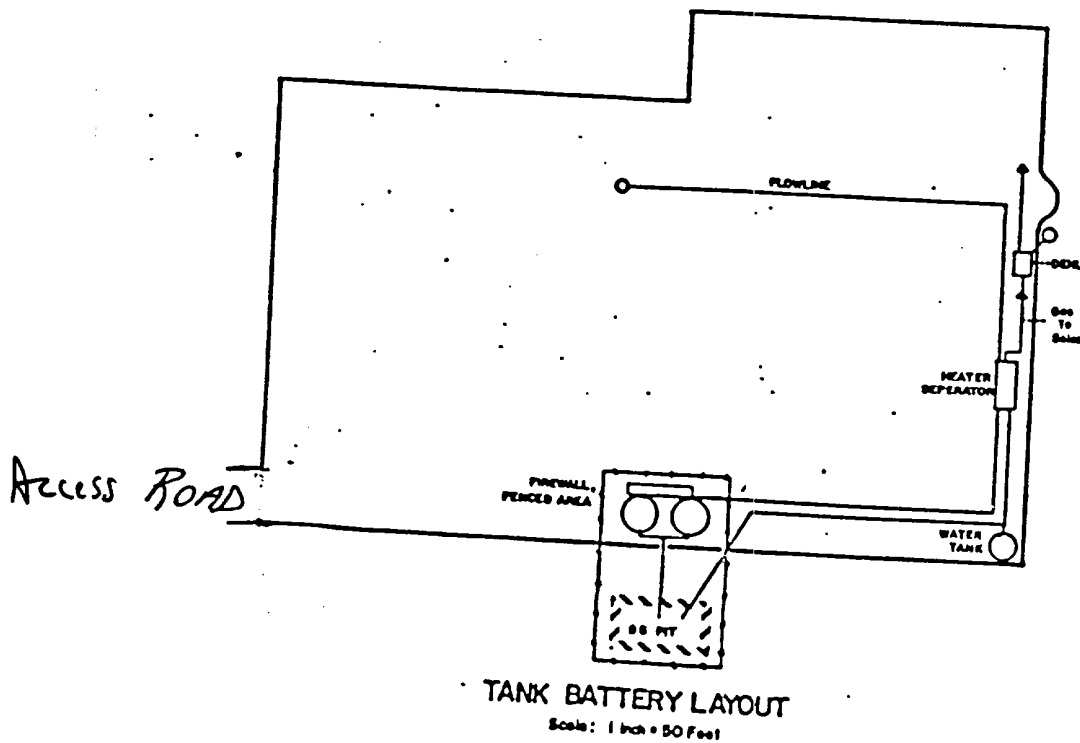
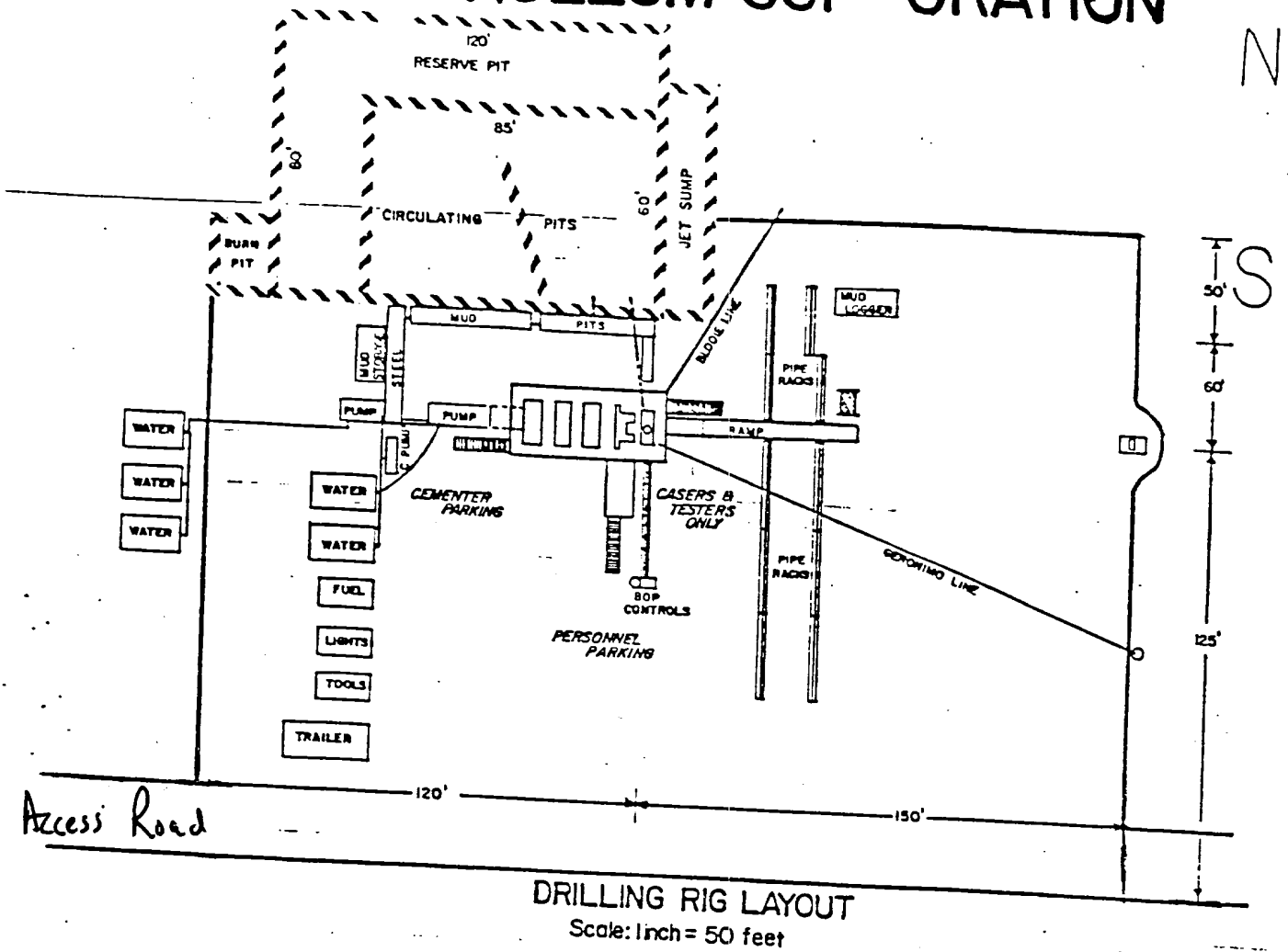
# YATES PETROLEUM CORPORATION

## EXHIBIT B



**BLOWOUT PREVENTER  
2M SYSTEM**

# YATES PETROLEUM CORPORATION



# YATES PETROLEUM CORP.

Norté Hills "Yw" fld. #1

330' FSL & 2310' FWL

Sec. 28 T16S-R30E

Eddy Co.

EXHIBIT D

