

AMENDED

Submit to Appropriate District Office
State Lease - 4 copies
Fee Lease - 3 copies

State of New Mexico
Energy, Minerals and Natural Resources Department

Form C-102
Revised 1-1-89

OIL CONSERVATION DIVISION

P.O. Box 2088
Santa Fe, New Mexico 87504-2088

DISTRICT I
P.O. Box 1900, Hobbs, NM 88240

DISTRICT II
P.O. Drawer DD, Artesia, NM 88210

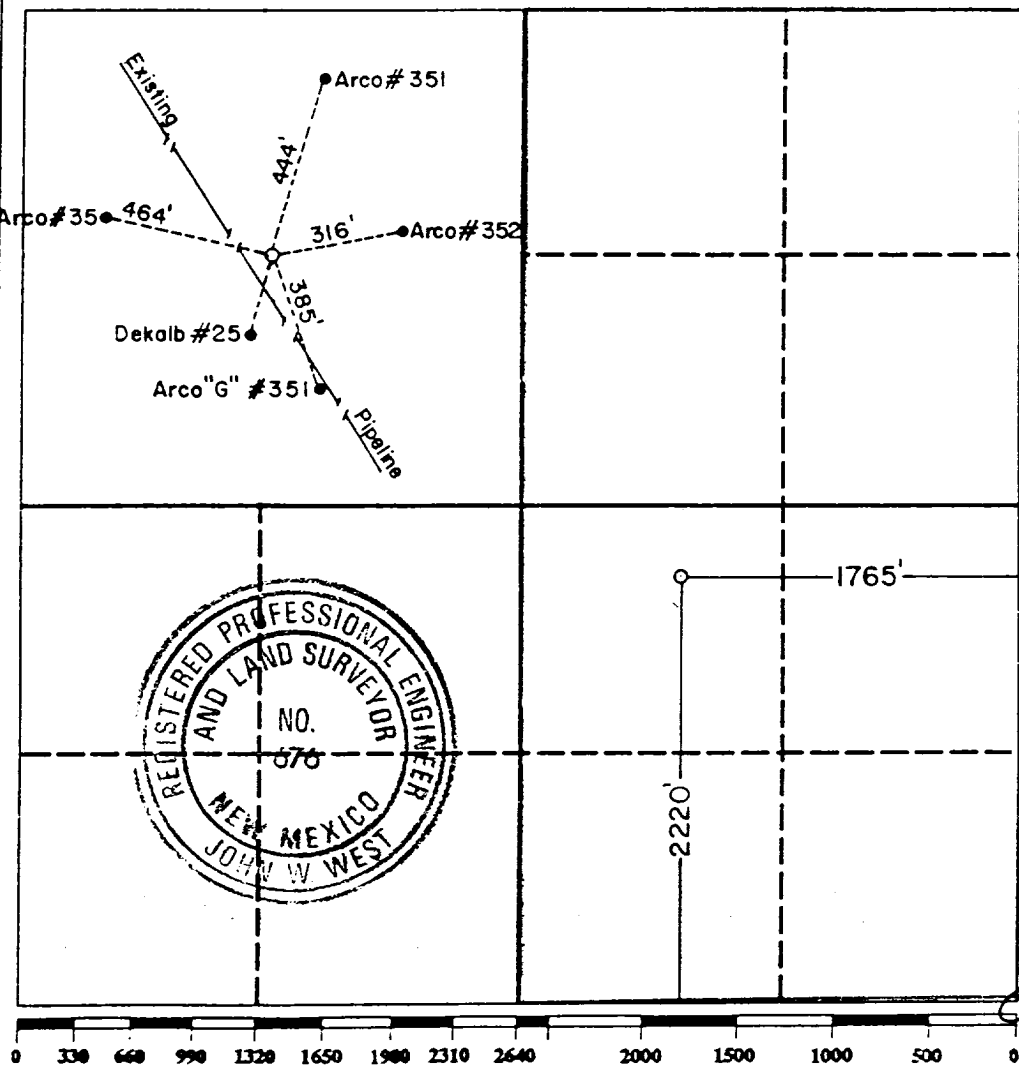
DISTRICT III
1000 Rio Brazos Rd., Aztec, NM 87410

WELL LOCATION AND ACREAGE DEDICATION PLAT

All Distances must be from the outer boundaries of the section

Operator PACIFIC ENTERPRISES OIL CO.			Lease PEOC 34 State Com.		Well No. 1
Unit Letter J	Section 34	Township 17 South	Range 28 East	County Eddy	
Actual Footage Location of Well: 2220 feet from the South line and 1765 feet from the East line					
Ground level Elev. 3660.3	Producing Formation Morrow		Pool Empire South	Dedicated Acreage: 320 Acres	

- Outline the acreage dedicated to the subject well by colored pencil or hatchure marks on the plat below.
- If more than one lease is dedicated to the well, outline each and identify the ownership thereof (both as to working interest and royalty).
- If more than one lease of different ownership is dedicated to the well, have the interest of all owners been consolidated by communitization, unitization, force-pooling, etc?
 Yes No If answer is "yes" type of consolidation forced pooling
 If answer is "no" list the owners and tract descriptions which have actually been consolidated. (Use reverse side of this form if necessary.)
 No allowable will be assigned to the well until all interests have been consolidated (by communitization, unitization, forced-pooling, or otherwise) or until a non-standard unit, eliminating such interest, has been approved by the Division.



OPERATOR CERTIFICATION
I hereby certify that the information contained herein is true and complete to the best of my knowledge and belief.

Signature: *Nancy Tatarzyn*
 Printed Name: Nancy Tatarzyn
 Position: Engineering Tech
 Company: Pacific Enterprises Oil Co.
 Date: 9-10-90

SURVEYOR CERTIFICATION
I hereby certify that the well location shown on this plat was plotted from field notes of actual surveys made by me or under my supervision, and that the same is true and correct to the best of my knowledge and belief.

Date Surveyed: September 7, 1990

Signature & Seal of Professional Surveyor: *John W. West*

Certificate No. JOHN W. WEST, 676
 RONALD J. ENDSON, 3239

125630