

**N. MEXICO OIL CONSERVATION COMMISSION
WELL LOCATION AND ACREAGE DEDICATION PLAT**

Form C-102
Supersedes C-128
Effective 1-1-65

All distances must be from the outer boundaries of the Section.

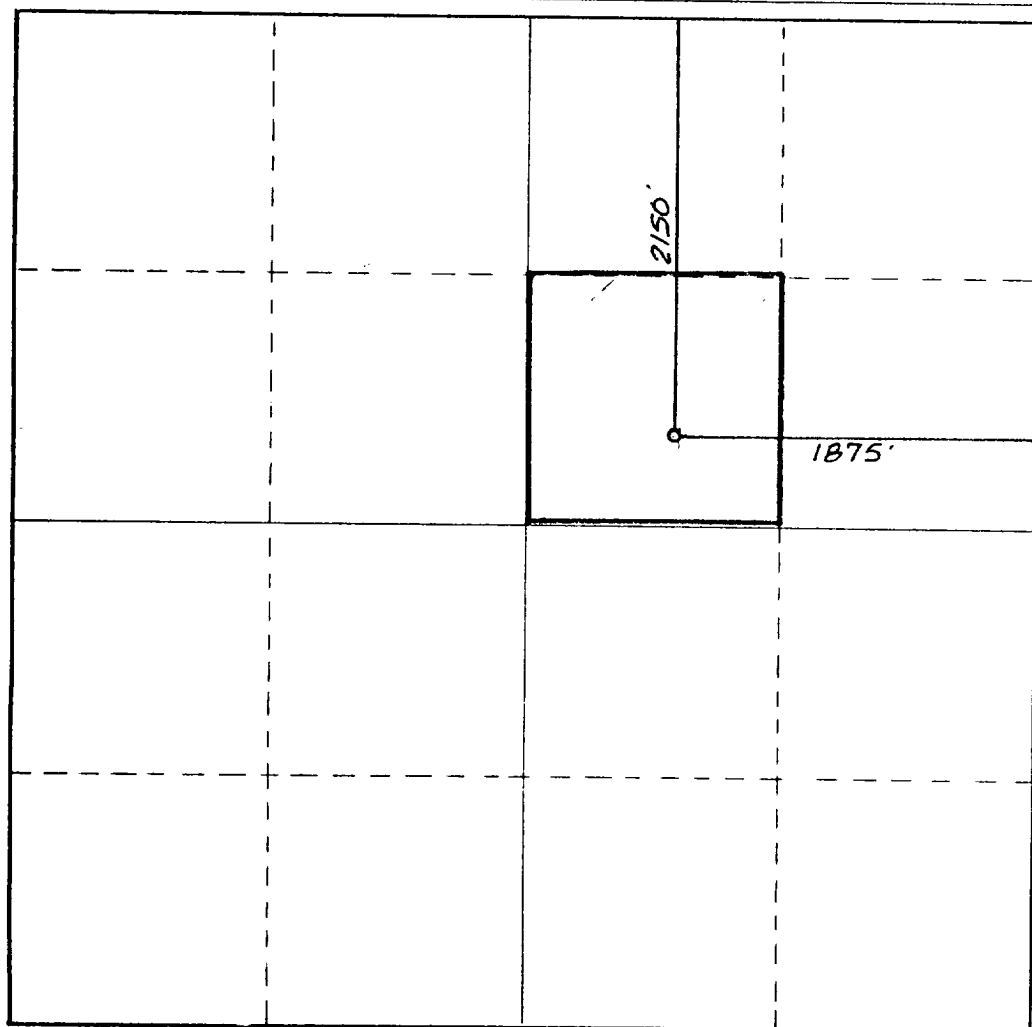
Operator SENDERO PETROLEUM INC.			Lease Max Federal		Well No. 1
Unit Letter G	Section 13	Township 16 South	Range 30 East	County Eddy County, N.M.	
Actual Footage Location of Well: 2150 feet from the North line and 1875 feet from the East line					
Ground Level Elev. 3892.	Producing Formation Qn CBG San Andres			Pool Henshaw	Dedicated Acreage: 40 Acres

1. Outline the acreage dedicated to the subject well by colored pencil or hatchure marks on the plat below.
2. If more than one lease is dedicated to the well, outline each and identify the ownership thereof (both as to working interest and royalty).
3. If more than one lease of different ownership is dedicated to the well, have the interests of all owners been consolidated by communitization, unitization, force-pooling, etc?

☐ Yes ☒ No If answer is "yes," type of consolidation _____

If answer is "no," list the owners and tract descriptions which have actually been consolidated. (Use reverse side of this form if necessary.) KURT W. BOLEY owner of S1/2 NE1/4 Sec 13

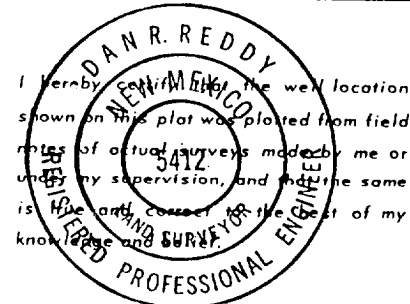
No allowable will be assigned to the well until all interests have been consolidated (by communitization, unitization, forced-pooling, or otherwise) or until a non-standard unit, eliminating such interests, has been approved by the Commission.



CERTIFICATION

I hereby certify that the information contained herein is true and complete to the best of my knowledge and belief.

Kurt Boley
Name
KURT BOLEY
Position
VICE PRESIDENT
Company
Sendero Petroleum, Inc
Date
8-17-90



Date Surveyed
July 30, 1990
Registered Professional Engineer and/or Land Surveyor
Dan R. Reddy
Certificate No.
NM PE&PS NO. 5412

