

Submit to Appropriate  
District Office  
State Lease - 6 copies  
Fee Lease - 5 copies

State of New Mexico  
Geology, Minerals and Natural Resources Department

Form C-101  
Revised 1-1-89

OIL CONSERVATION DIVISION

DISTRICT I  
P.O. Box 1980, Hobbs, NM 88240

P.O. Box 2088  
Santa Fe, New Mexico 87504-2088

DISTRICT II  
P.O. Drawer DD, Artesia, NM 88210

DISTRICT III  
1000 Rio Brazos Rd., Aztec, NM 87410

API NO. (assigned by OCD on New Wells)

30-015-26628

5. Indicate Type of Lease

STATE ☐

FEE ☒

6. State Oil & Gas Lease No.

APPLICATION FOR PERMIT TO DRILL, DEEPEN, OR PLUG BACK

1a. Type of Work:

DRILL ☒

RE-ENTER ☐

DEEPEN ☐

PLUG BACK ☐

b. Type of Well:

OIL  
WELL ☐

GAS  
WELL ☒

OTHER ☐

SINGLE  
ZONE ☒

MULTIPLE  
ZONE ☐

7. Lease Name or Unit Agreement Name

Haldeman

2. Name of Operator

Mewbourne Oil Company

8. Well No.

1

3. Address of Operator

P.O. Box 5270 Hobbs, New Mexico 88241

9. Pool name or Wildcat

Kennedy Farms Morrow

4. Well Location

Unit Letter E : 1980 Feet From The North Line and 660 Feet From The West Line

Section 14

Township 17S

Range 26E

NMPM

Eddy

County

10. Proposed Depth

9,000'

11. Formation

Morrow

12. Rotary or C.T.

Rotary

13. Elevations (Show whether DF, RT, GR, etc.)

3323.5' GL

14. Kind & Status Plug. Bond

Blanket on file

15. Drilling Contractor

WEK Drilling Co.

16. Approx. Date Work will start

March 10, 1991

17. PROPOSED CASING AND CEMENT PROGRAM

SIZE OF HOLE	SIZE OF CASING	WEIGHT PER FOOT	SETTING DEPTH	SACKS OF CEMENT	EST. TOP
12-1/4"	8-5/8"	24#	1400'	550	Surface
7-7/8"	5-1/2"	17# & 20#	9000'	650	5000'

Blow Out Preventor: Schaffer LWS or equivalent (Double Ram Hydraulic) 900 series.  
Hydril 900 series annular preventor. Grant rotating head,  
TOTCO flow monitors on pits.

Mud Program: 0' - 1400' FW w/spud mud. Paper for LCM material.  
1400' - 7500' FW w/LCM as needed.  
7500' - 9000' Cut brine w/Drispac, Vis. 32-36, WL 0-10 cc, Wt. 9.2-9.5#  
as needed.

Gas is not dedicated.

APPROVAL VALID FOR 180 DAYS  
7/4/91

IN ABOVE SPACE DESCRIBE PROPOSED PROGRAM: IF PROPOSAL IS TO DEEPEN OR PLUG BACK, GIVE DATA ON PRESENT PRODUCTIVE ZONE AND PROPOSED NEW PRODUCTIVE ZONE. GIVE BLOWOUT PREVENTER PROGRAM, IF ANY.

I hereby certify that the information above is true and complete to the best of my knowledge and belief.

SIGNATURE

W.H. Cravey

TITLE District Supt.

DATE Jan. 30, 1991

(505)

TYPE OR PRINT NAME

W.H. Cravey

TELEPHONE NO. 393-5905

(This space for State Use)

ORIGINAL SIGNED BY

MIKE WILLIAMS

APPROVED BY

SUPERVISOR, DISTRICT II

TITLE

DATE

FEB 4 1991

CONDITIONS OF APPROVAL, IF ANY:

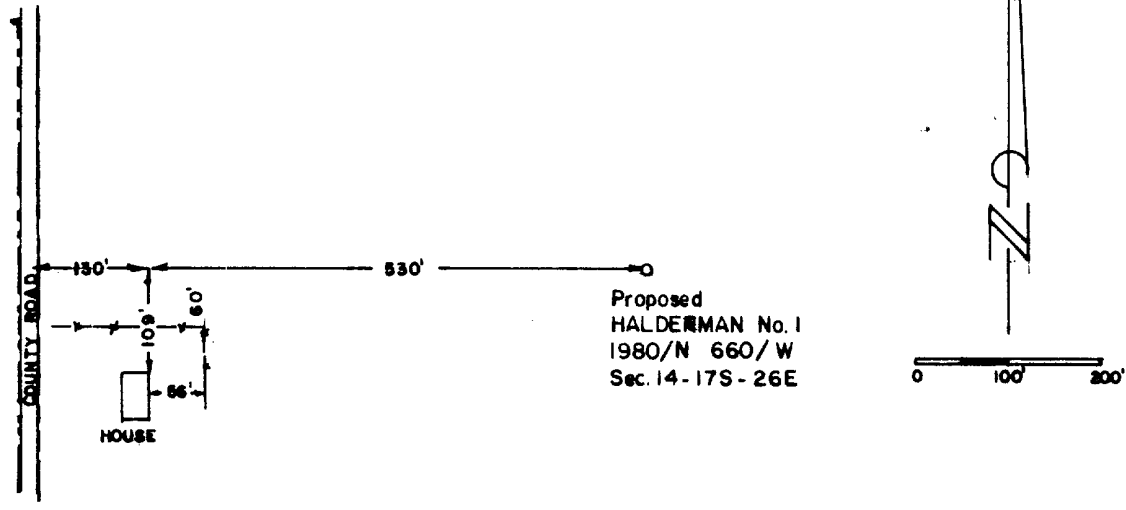
APPROVED BY INSURANCE  
B/S

JOB No.

RECEIVED

JAN 31 1991

O. C. D.  
ARTESIA, OFFICE



THE PREPARATION OF THIS PLAT AND THE PERFORMANCE OF THE SURVEY UPON WHICH IT IS BASED WERE DONE UNDER MY DIRECTION AND THE PLAT ACCURATELY DEPICTS THE RESULTS OF SAID SURVEY AND MEETS THE REQUIREMENTS OF THE STANDARDS FOR LAND SURVEYS IN NEW MEXICO AS ADOPTED BY THE NEW MEXICO STATE BOARD OF REGISTRATION FOR PROFESSIONAL ENGINEERS AND LAND SURVEYORS.

MEWBOURNE OIL COMPANY

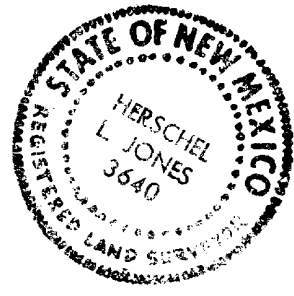
PLAN VIEW OF HALDERMAN #1 showing location of nearest Home, Section 14, Township 17 South, Range 26 East, N.M.P.M., Eddy County, New Mexico

P.O. Box 996

Lovington, New Mexico 88260

SCALE: 1" = 200'	DRAWN BY: erb
DATE: 9/20/90	SHEET 1 OF 1

*Herschel L. Jones*  
HERSCHEL L. JONES R.L.S. No. 3640



RECEIVED

JAN 31 1941

O.C.D.  
ARTESIA OFFICE

