

District I
PO Box 1980, Hobbs, NM 88241-1980
District II
811 South First, Artesia, NM 88210
District III
1000 Rio Brazos Rd., Aztec, NM 87410
District IV
2040 South Pacheco, Santa Fe, NM 87505

State of New Mexico
Energy, Minerals & Natural Resources Department

OIL CONSERVATION DIVISION
2040 South Pacheco
Santa Fe, NM 87505

Form C-108
Revised October 18, 1994
Instructions on back
Submit to Appropriate District Office
State Lease - 6 Copies
Fee Lease - 5 Copies

JUL
RECEIVED
OCD - ARTESIA

☐ AMENDED REPORT

APPLICATION FOR PERMIT TO DRILL, RE-ENTER, DEEPEN, PLUGBACK, OR ADD A ZONE

Operator Name and Address Navajo Refining Company Post Office Box 159 Artesia, New Mexico 88211		OGRID Number 15694
Property Code 23592	Property Name WDW-4	API Number 30-015-27592-0001
		Well No. #1

Surface Location

UL or lot no.	Section	Township	Range	Lot Idn	Feet from the	North/South line	Feet from the	East/West line	County
0	31	17S	28E		660	South	2310	East	Eddy

Proposed Bottom Hole Location If Different From Surface

UL or lot no.	Section	Township	Range	Lot Idn	Feet from the	North/South line	Feet from the	East/West line	County
Proposed Pool 1 Wolfcamp, Cisco, and Canyon Injection Zone					Proposed Pool 2				

Work Type Code Re-enter	Well Type Code WDW	Cable/Rotary Rotary	Lease Type Code	Ground Level Elevation 3678 feet
Multiple	Proposed Depth 9624 Feet	Formation Wolfcamp/Cisco/ Canyon	Contractor	Spud Date

Proposed Casing and Cement Program

Hole Size	Casing Size	Casing weight/foot	Setting Depth	Sacks of Cement	Estimated TOC
17-1/2	13-3/8	48	390	525	surface
12-1/4	9-5/8	36	2555	1000	surface
8-1/2	7	26	9600	*	surface

Describe the proposed program. If this application is to DEEPEN or PLUG BACK give the data on the present productive zone and proposed new productive zone. Describe the blowout prevention program, if any. Use additional sheets if necessary.

Re-enter plugged and abandoned Mewbourne Oil Company Chalk Bluff 31 State No. 1. With drilling rig, wash out hole and drill out cement plugs to 9624 feet (original total depth was 10,200 feet). Log hole. Set straddle packers and run injectivity test or if required by hole condition, set 7 inch casing at 9600 feet and cement to surface; run injectivity tests.

*Sacks of cement for 7 inch casing to be determined from calipered hole volume, plus 20%.
NOTE: See accompanying Form C-108 for additional information.

I hereby certify that the information given above is true and correct to the best of my knowledge and belief.

Signature: *Darrell Moore*
Printed name: *Darrell Moore*

Env. Mgr. for Water & Waste

Date: 2/26/98 Phone: 505-744-3311

OIL CONSERVATION DIVISION

Approved by: ORIGINAL SIGNED BY TIM W. GUM
DISTRICT II SUPERVISOR

Approval Date: 8-6-98 Expiration Date: 8-6-99

Conditions of Approval:
Attached: ☐

Post ID-1
5-28-99
Re-entry

District I
PO Box 1980, Hobbs, NM 88241-1980
District II
811 South First, Artesia, NM 88210
District III
1000 Rio Brazos Rd., Aztec, NM 87410
District IV
2040 South Pacheco, Santa Fe, NM 87505

State of New Mexico
Energy, Minerals & Natural Resources Department

OIL CONSERVATION DIVISION
2040 South Pacheco
Santa Fe, NM 87505

Form C-102
Revised October 18, 1994
Instructions on back
Submit to Appropriate District Office
State Lease - 4 Copies
Fee Lease - 3 Copies

☐ AMENDED REPORT

WELL LOCATION AND ACREAGE DEDICATION PLAT

API Number 30-015-27592-0001		Pool Code	Pool Name Wolfcamp, Cisco, and Canyon Injection Zone
Property Code WDW-2	Property Name		Well Number 1
OGRID No.	Operator Name Navajo Refining Company		Elevation 3678 Feet GL

10 Surface Location

UL or lot no.	Section	Township	Range	Lot Idn	Feet from the	North/South line	Feet from the	East/West line	County
00	31	17S	28E		660	South	2310	East	Eddy

11 Bottom Hole Location If Different From Surface

UL or lot no.	Section	Township	Range	Lot Idn	Feet from the	North/South line	Feet from the	East/West line	County

Dedicated Acres	Joint or In/In	Consolidation Code	Order No.

NO ALLOWABLE WILL BE ASSIGNED TO THIS COMPLETION UNTIL ALL INTERESTS HAVE BEEN CONSOLIDATED
OR A NON-STANDARD UNIT HAS BEEN APPROVED BY THE DIVISION

<p>16</p>	<p>17 OPERATOR CERTIFICATION</p> <p>I hereby certify that the information contained herein is true and complete to the best of my knowledge and belief.</p> <p><u>Darrell Moore</u> Signature <u>Darrell Moore</u> Printed Name <u>Env. Mgr. for Water-Waste</u> Title <u>2/28/98</u> Date</p>	
	<p>18 SURVEYOR CERTIFICATION</p> <p>I hereby certify that the well location shown on this plat was plotted from field notes of actual surveys made by me or under my supervision, and that the same is true and correct to the best of my belief.</p> <p>_____ Date of Survey _____ Signature and Seal of Professional Surveyer</p>	
	<p>Certificate Number</p>	

See attached survey plat

Submit to Appropriate
District Office
State Lease - 4 copies
Fee Lease - 3 copies

State of New Mexico
Energy, Minerals and Natural Resources Department

Form C-102
Revised 1-1-89

OIL CONSERVATION DIVISION

P.O. Box 2088

Santa Fe, New Mexico 87504-2088

DISTRICT I

P.O. Box 1980, Hobbs, NM 88240

DISTRICT II

P.O. Drawer DD, Artesia, NM 88210

DISTRICT III

1000 Rio Brazos Rd., Aztec, NM 87410

WELL LOCATION AND ACREAGE DEDICATION PLAT

All Distances must be from the outer boundaries of the section

Operator MEWBOURNE OIL COMPANY			Lease CHALK BLUFF 31 STATE		Well No. 1
Unit Letter O	Section 31	Township 17 SOUTH	Range 28 EAST	County EDDY	
Actual Footage Location of Well: 2310 feet from the EAST line and 660 feet from the SOUTH line					
Ground level Elev. 3678	Producing Formation Morrow		Pool Illinois Camp Morrow North	Dedicated Acreage: 320 Acres	

1. Outline the acreage dedicated to the subject well by colored pencil or hatchure marks on the plat below.

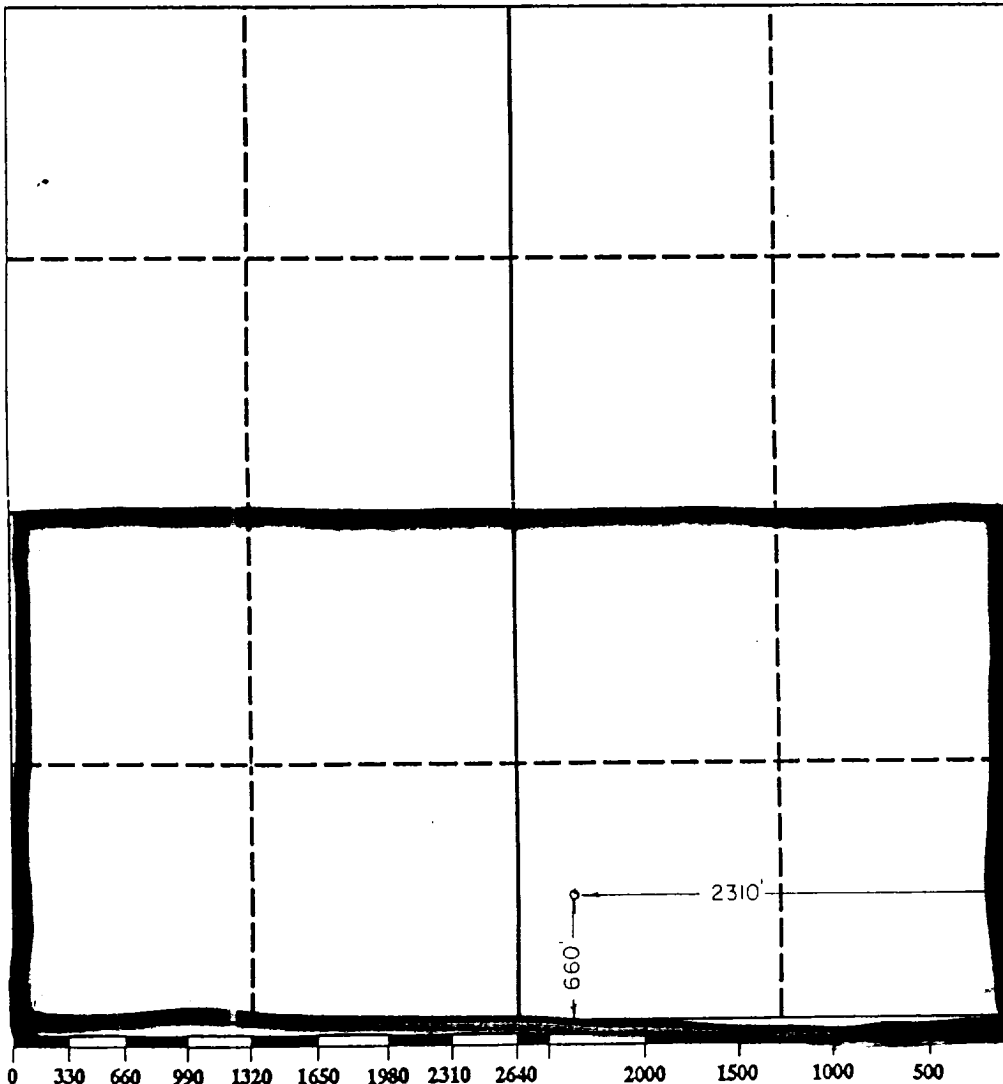
2. If more than one lease is dedicated to the well, outline each and identify the ownership thereof (both as to working interest and royalty).

3. If more than one lease of different ownership is dedicated to the well, have the interest of all owners been consolidated by communitization, unitization, force-pooling, etc.?

☒ Yes ☐ No If answer is "yes" type of consolidation Communitization

If answer is "no" list the owners and tract descriptions which have actually been consolidated. (Use reverse side of this form if necessary.)

No allowable will be assigned to the well until all interests have been consolidated (by communitization, unitization, forced-pooling, or otherwise) or until a non-standard unit, eliminating such interest, has been approved by the Division.



OPERATOR CERTIFICATION

I hereby certify that the information contained herein is true and complete to the best of my knowledge and belief.

Signature
Bill Pierce

Printed Name
Bill Pierce

Position
Drlg. Supt.

Company
Mewbourne Oil Company

Date
July 22, 1993

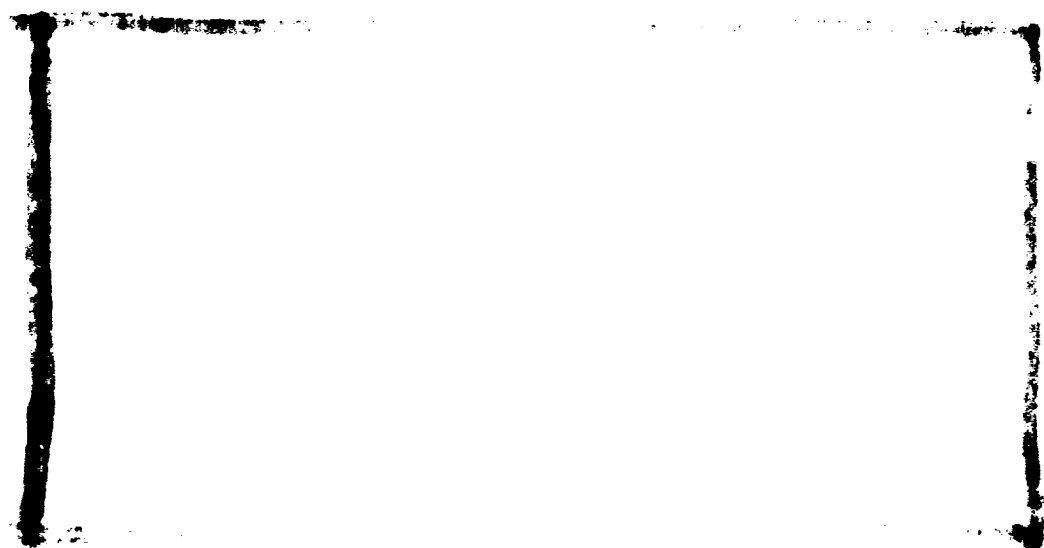
SURVEYOR CERTIFICATION

I hereby certify that the well location shown on this plat was plotted from field notes of actual surveys made by me or under my supervision, and that the same is true and correct to the best of my knowledge and belief.

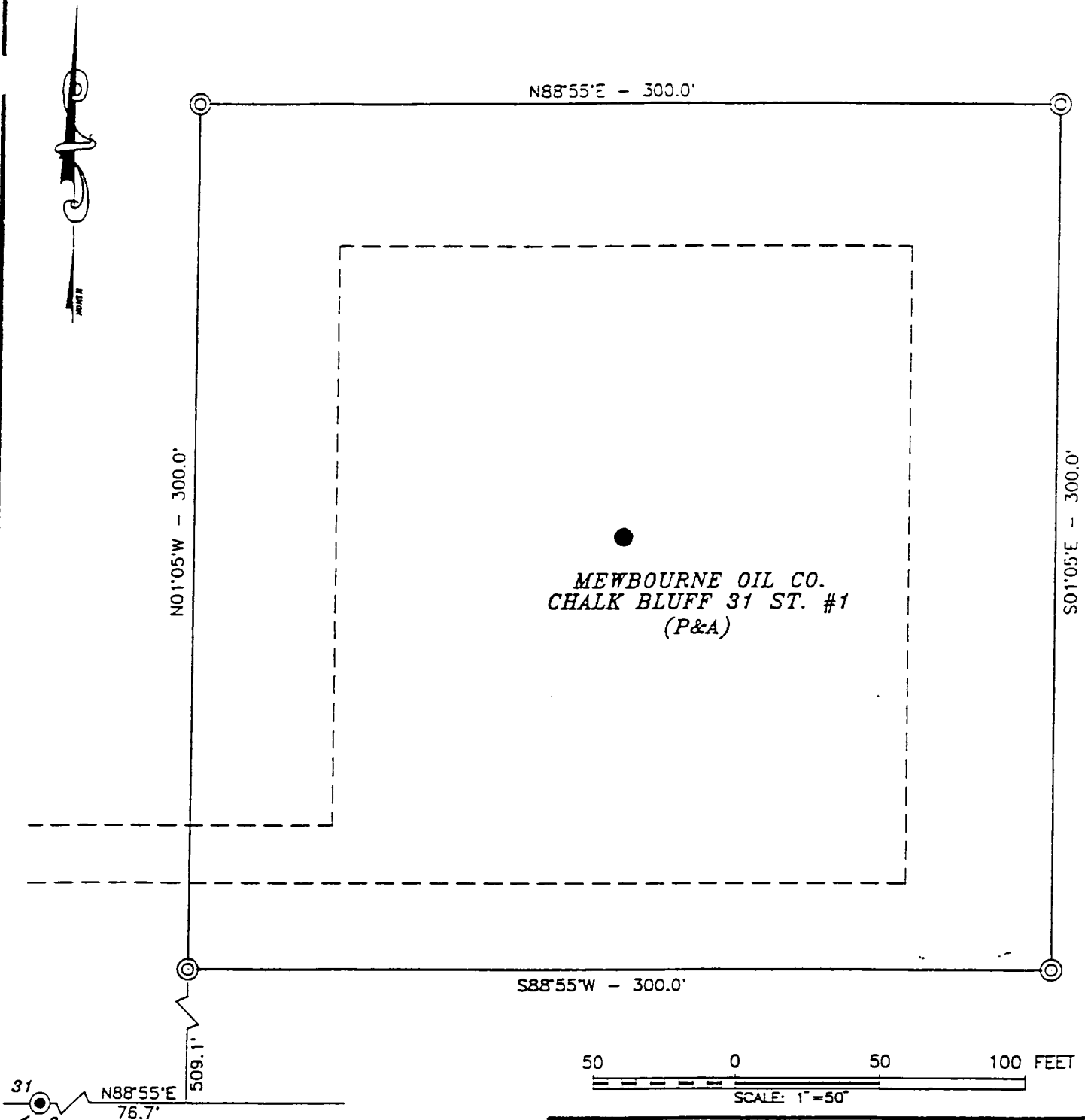
Date Surveyed
10/26/92

Signature & Seal of
Professional Surveyor

Herschel Jones
Herschel Jones
Certificate No. **3640**



SECTION 31, TOWNSHIP 17 SOUTH, RANGE 28 EAST, N.M.P.M.,
EDDY COUNTY NEW MEXICO



© DENOTES: SET 1/2" IRON ROD
W/ PVC CAP MARKED
"PS 3239 PS 12641"

JOHN W. WEST ENGINEERING COMPANY
CONSULTING ENGINEERS & SURVEYORS - HOBBS, NEW MEXICO

NAVAJO REFINING COMPANY

CHALK BLUFF 31 STATE #1 LOCATED 660 FEET FROM
THE SOUTH LINE AND 2310 FEET FROM THE EAST LINE
SECTION 31, TOWNSHIP 17 SOUTH, RANGE 28 EAST,
N.M.P.M., EDDY COUNTY, NEW MEXICO.

Survey Date: 11/24/97	Sheet 1 of 1 Sheets
W.O. Number: 97-11-1922	Drawn By: CDG
Date: 12/1/97	DISK: NAVAJO
NAV1922	