

Submit to Appropriate  
District Office  
State Lease - 4 copies  
Fee Lease - 3 copies

State of New Mexico  
Energy, Minerals and Natural Resources Department

Form C-102  
Revised 1-1-89

**OIL CONSERVATION DIVISION**

**DISTRICT I**  
P.O. Box 1980, Hobbs, NM 88240

P.O. Box 2088

Santa Fe, New Mexico 87504-2088

**DISTRICT II**  
P.O. Drawer DD, Artesia, NM 88210

**DISTRICT III**  
1000 Rio Brazos Rd., Aztec, NM 87410

**WELL LOCATION AND ACREAGE DEDICATION PLAT**

All Distances must be from the outer boundaries of the section

Operator <b>COLLINS &amp; WARE, INC.</b>			Lease <b>C V 14 FEDERAL</b>		Well No. <b>1</b>
Unit Letter <b>L</b>	Section <b>14</b>	Township <b>16 SOUTH</b>	Range <b>27 EAST</b>	County <b>EDDY COUNTY, NM</b>	
Actual Footage Location of Well: <b>1980</b> feet from the <b>SOUTH</b> line and <b>660</b> feet from the <b>WEST</b> line					
Ground level Elev. <b>3556.</b>	Producing Formation <b>Morrow</b>	Pool <b>Wildcat</b>			Dedicated Acreage: <b>320</b> Acres

1. Outline the acreage dedicated to the subject well by colored pencil or hatchure marks on the plat below.

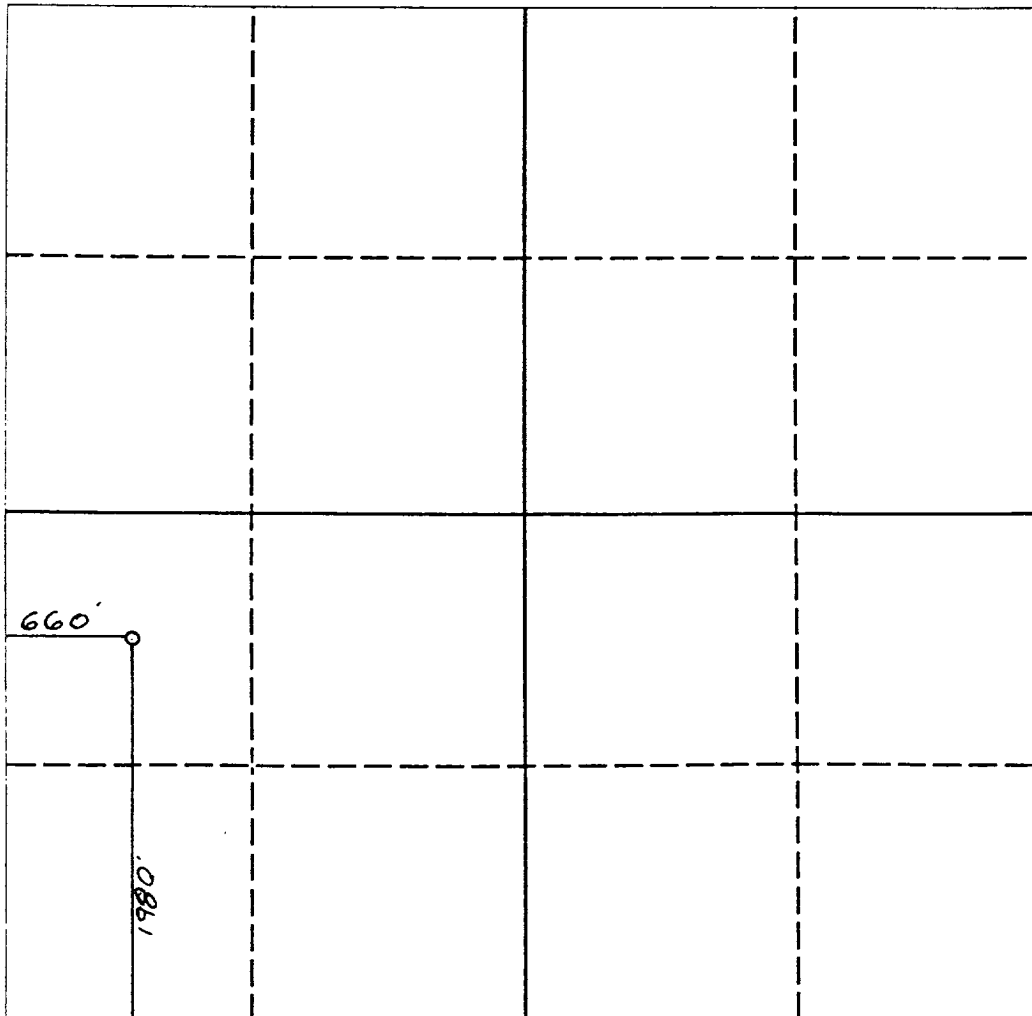
2. If more than one lease is dedicated to the well, outline each and identify the ownership thereof (both as to working interest and royalty).

3. If more than one lease of different ownership is dedicated to the well, have the interest of all owners been consolidated by communitization, unitization, force-pooling, etc.?

☐ Yes ☐ No If answer is "yes" type of consolidation \_\_\_\_\_

If answer is "no" list the owners and tract descriptions which have actually been consolidated. (Use reverse side of this form if necessary.) \_\_\_\_\_

No allowable will be assigned to the well until all interests have been consolidated (by communitization, unitization, forced-pooling, or otherwise) or until a non-standard unit, eliminating such interest, has been approved by the Division.



**OPERATOR CERTIFICATION**

I hereby certify that the information contained herein is true and complete to the best of my knowledge and belief.

Signature 
Printed Name <b>Max Guerrey</b>
Position <b>Regulatory Mgr.</b>
Company <b>Collins &amp; Ware, Inc.</b>
Date <b>12-3-93</b>

**SURVEYOR CERTIFICATION**

I hereby certify that the well location shown on this plat was plotted from field notes of actual surveys made by me or under my supervision, and that the same is true and correct to the best of my knowledge and belief.

Date Surveyed <b>NOVEMBER 24, 1993</b>
Signature & Seal of Registered Professional Surveyor 
Professional Engineer 

0 330 660 990 1320 1650 1980 2310 2640 2000 1500 1000 500 0