

454

30-015-28570

Form 3160-3
(December 1990)

FOR OIL, GAS, GEOTHERMAL
ENERGY USE
ARTESIA, NM 87010

SUBMIT IN TRIPLICATE*
(Other instructions on
reverse side)

Form approved.
Budget Bureau No. 1004-0136
Expires: December 31, 1991

UNITED STATES
DEPARTMENT OF THE INTERIOR
BUREAU OF LAND MANAGEMENT

APPLICATION FOR PERMIT TO DRILL OR DEEPEN

| | | | | | |
|---|--|--|--|--|--|
| 1a. TYPE OF WORK DRILL <input checked="" type="checkbox"/> DEEPEN <input type="checkbox"/> | | | 5. LEASE DESIGNATION AND SERIAL NO. NNNM 93469 | | |
| b. TYPE OF WELL OIL WELL <input checked="" type="checkbox"/> GAS WELL <input type="checkbox"/> OTHER <input type="checkbox"/> SINGLE ZONE <input type="checkbox"/> MULTIPLE ZONE <input type="checkbox"/> | | | 6. IF INDIAN, ALLOTTEE OR TRIBE NAME | | |
| 2. NAME OF OPERATOR Collins & Ware, Inc. 4874 | | | 7. UNIT AGREEMENT NAME | | |
| 3. ADDRESS AND TELEPHONE NO. 508 W. Wall, Suite 1200, Midland, Texas 79701 (915) 687-3435 | | | 8. FARM OR LEASE NAME, WELL NO. 17230 C V "23" Federal #1 | | |
| 4. LOCATION OF WELL (Report location clearly and in accordance with any State requirements.) At surface 1980' FNL & 660' FWL At proposed prod. zone 1980' FNL & 660' FWL Unit E | | | 9. API WELL NO. 30-015-28570 | | |
| 14. DISTANCE IN MILES AND DIRECTION FROM NEAREST TOWN OR POST OFFICE* 10 miles NW of Artesia, NM | | | 10. FIELD AND POOL, OR WILDCAT GROUP Und (Premier Sands) 6602 | | |
| 15. DISTANCE FROM PROPOSED* LOCATION TO NEAREST PROPERTY OR LEASE LINE, FT. (Also to nearest drlg. unit line, if any) 660' | | | 11. SEC., T., R., M., OR BLK. AND SURVEY OR AREA Sec 23, T-16S, R-27E | | |
| 16. NO. OF ACRES IN LEASE 960 | | | 12. COUNTY OR PARISH Eddy | | |
| 17. NO. OF ACRES ASSIGNED TO THIS WELL 40 | | | 13. STATE NM | | |
| 18. DISTANCE FROM PROPOSED LOCATION* TO NEAREST WELL, DRILLING, COMPLETED, OR APPLIED FOR, ON THIS LEASE, FT. N/A | | | 20. ROTARY OR CABLE TOOLS Rotary | | |
| 21. ELEVATIONS (Show whether DF, RT, GR, etc.) GR 3549' | | | 22. APPROX. DATE WORK WILL START* June 15, 1995 | | |

PROPOSED CASING AND CEMENTING PROGRAM

| SIZE OF HOLE | GRADE, SIZE OF CASING | WEIGHT PER FOOT | SETTING DEPTH | QUANTITY OF CEMENT |
|--------------|-----------------------|-----------------|---------------|-----------------------------|
| 12 1/4" | 8 5/8 K55 | 24 | 350 | 300 sx "C" (Circ) |
| 7 7/8 | 5 1/2 K55 | 15.5 | 1600 | 200 sx "C" (Circ) CIRCULATE |

Operator proposes to drill a test to the Premier Sands formation. If successful and commercial quantities of oil and/or gas are present, 5 1/2" production casing will be run to TD. If non-commercial, the test will be P&A in a manner consistent with Federal and State regulations and according to good engineering practices.

Specific programs according to Onshore Oil & Gas Order #1 are outlined in the following attachments.

RECEIVED

JUN 26 1995

OIL CON. DIV.
DIST. 2

Post ID-1
7-17-95
New Loc & API

IN ABOVE SPACE DESCRIBE PROPOSED PROGRAM: If proposal is to deepen, give data on present productive zone and proposed new productive zone. If proposal is to drill or deepen directionally, give pertinent data on subsurface locations and measured and true vertical depths. Give blowout preventer program, if any.

24. SIGNED Dianne Sumrall TITLE Production Clerk DATE 5/10/95

(This space for Federal or State office use)

PERMIT NO. _____ APPROVAL DATE _____
Application approval does not warrant or certify that the applicant holds legal or equitable title to those rights in the subject lease which would entitle the applicant to conduct operations on the conditions of approval, if any.

APPROVED BY (ORIG. SCD.) _____ TITLE _____ DATE _____

*See Instructions On Reverse Side

APPROVAL SUBJECT TO
GENERAL REQUIREMENTS AND
SPECIAL STIPULATIONS
ATTACHED

District I
PO Box 1980, Hobbs, NM 88241-1980

District II
PO Drawer DD, Artesia, NM 88211-0719

District III
1000 Rio Brasos Rd., Aztec, NM 87410

District IV
PO Box 2088, Santa Fe, NM 87504-2088

State of New Mexico
Energy, Minerals & Natural Resources Department

Form C-102
Revised February 10, 1994
Submit to Appropriate District Office
State Lease - 4 Copies
Fee Lease - 3 Copies

OIL CONSERVATION DIVISION

PO Box 2088
Santa Fe, NM 87504-2088

☐ AMENDED REPORT

WELL LOCATION AND ACREAGE DEDICATION PLAT

| | | |
|--|---|--|
| 1 API Number 33-015-28570 | 2 Pool Code 66002 | 3 Pool Name Undesignated Premier Sands Group 1 |
| 4 Property Code | 5 Property Name C. V. "23" Federal | 6 Well Number 1 |
| 7 OGRIO No. 004874 | 8 Operator Name Collins & Ware, Inc. | 9 Elevation 3549 |

¹⁰Surface Location

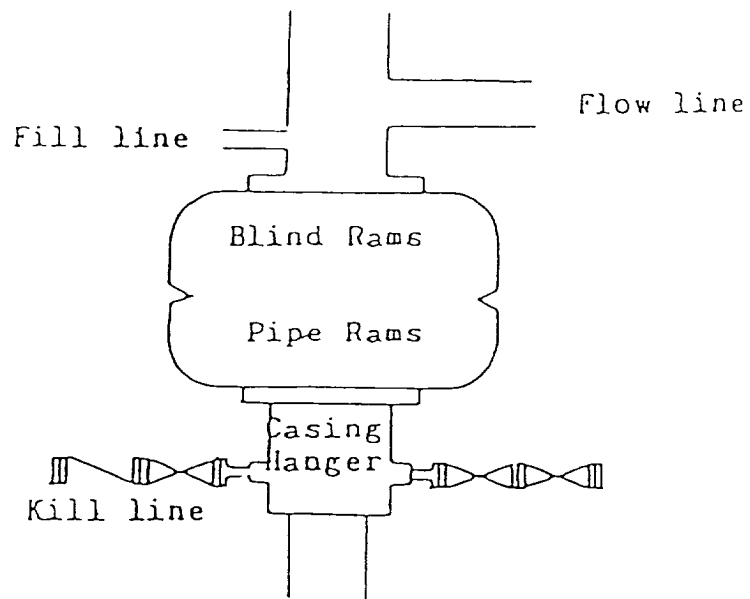
| | | | | | | | | | |
|---------------------------|----------------------|-------------------------|----------------------|---------|------------------------------|----------------------------------|-----------------------------|-------------------------------|-----------------------|
| UL or lot no. E | Section 23 | Township 16 S | Range 27 E | Lot Idn | Feet from the 1980 | North/South line North | Feet from the 660 | East/West line West | County Eddy |
|---------------------------|----------------------|-------------------------|----------------------|---------|------------------------------|----------------------------------|-----------------------------|-------------------------------|-----------------------|

¹¹Bottom Hole Location If Different From Surface

| | | | | | | | | | |
|--|-------------------------------|----------------------------------|-------|-------------------------|---------------|------------------|---------------|----------------|--------|
| UL or lot no. | Section | Township | Range | Lot Idn | Feet from the | North/South line | Feet from the | East/West line | County |
| | | | | | | | | | |
| ¹² Dedicated Acres 40 | ¹³ Joint or Infill | ¹⁴ Consolidation Code | | ¹⁵ Order No. | | | | | |

NO ALLOWABLE WILL BE ASSIGNED TO THIS COMPLETION UNTIL ALL INTERESTS HAVE BEEN CONSOLIDATED
OR A NON-STANDARD UNIT HAS BEEN APPROVED BY THE DIVISION

| | | | |
|---|--|--|--|
| ¹⁶ <p>CV (23) Federal No. 1 Elev. 3549'</p> | ¹⁷ OPERATOR CERTIFICATION <p>I hereby certify that the information contained herein is true and complete to the best of my knowledge and belief.</p> <p><i>[Signature]</i> Signature Dianne Sumrall Printed Name Production Clerk Title May 1, 1995 Date</p> | | |
| | ¹⁸ SURVEYOR CERTIFICATION <p>I hereby certify that the well location shown on this plat was plotted from field notes of actual surveys made by me or under my supervision, and that the same is true and correct to the best of my belief.</p> <p>April 28, 1995 Date of Survey Signature and Seal of Professional Surveyor <p><i>[Signature]</i> Certificate Number 10324</p></p> | | |
| | | | |
| | | | |



Blowout Preventer
3000 psi working pressure

Adjustable

SJS

~~POSITIVE~~

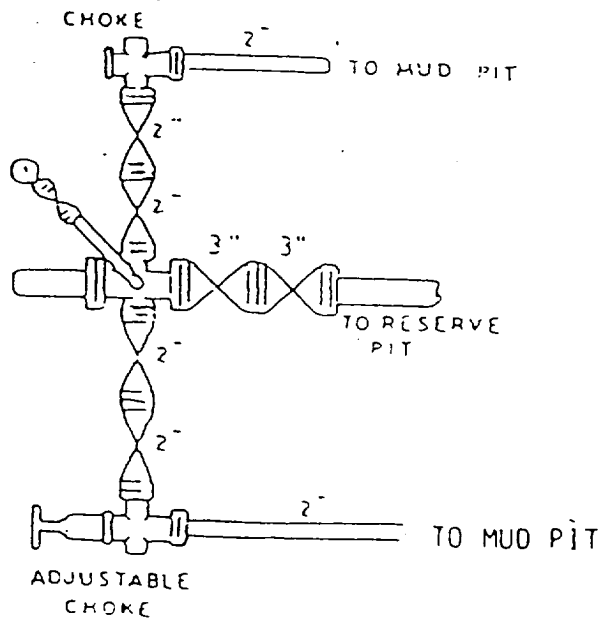


Exhibit No.
BOP ARRANGEMENT

EXHIBIT 1A
NOTES REGARDING THE BLOWOUT PREVENTERS

C V "23" Federal #1
Eddy County, New Mexico

1. Drilling nipple to be so constructed that it can be removed without use of a welder through rotary table opening, with minimum I.D. equal to preventer bore.
2. Wear ring to be properly installed in head.
3. Blow out preventer and all fittings must be in good condition, 3000 psi W. P. minimum.
4. All fittings to be flanged.
5. Safety valve must be available on rig floor at all times with proper connections, valve to be full bore 3000 psi W. P. minimum.
6. All choke and fill lines to be securely anchored, especially ends of choke lines.
7. Equipment through which bit must pass shall be at least as large as the diameter of the casing being drilled through.
8. Kelly cock on kelly.
9. Extension wrenches and hand wheels to be properly installed.
10. Blow out preventer closing equipment to include minimum 40 gallon accumulator, two independent sources of pump power on each closing unit installation, and meet all API specifications.