

UNITED STATES
DEPARTMENT OF THE INTERIOR
BUREAU OF LAND MANAGEMENT

U. M. Oil Cons. 8118-1015
SUBMIT IN
ARTESIA
(See other for
reverse side)
88210-2031

Form approved.

APPLICATION FOR PERMIT TO DRILL OR DEEPEN

1a. TYPE OF WORK: DRILL ☒ DEEPEN ☐

b. TYPE OF WELL: OIL WELL ☒ GAS WELL ☐ Other ☐ SINGLE ZONE ☐ MULTIPLE ZONE ☐

2. NAME OF OPERATOR
6137 DEVON ENERGY CORPORATION (NEVADA)

3. ADDRESS AND TELEPHONE NO.
20 N. BROADWAY, SUITE 1500, OKC, OK 73102 (405) 552-4511

4. LOCATION OF WELL (Report location clearly and in accordance with any State requirements)*
At surface 2410' FSL & 1575' FWL of Section 33-T17S-R27E, Unit "K"
UNORTHODOX LOCATION
At top proposed prod. zone (SAME)

5. LEASE DESIGNATION AND SERIAL NO.
LC-049648-B

6. IF INDIAN, ALLOTTEE OR TRIBE NAME
NA

7. UNIT AGREEMENT NAME

8. FARM OR LEASE NAME, WELL NO.
Compton 33 Federal #2 22362

9. WELL NO.
3015-30147

10. FIELD AND POOL, OR WILDCAT
Red Lake; Q-GB-SA

11. SEC., T., R., M., OR BLOCK AND SURVEY OR AREA
Section 33-T17S-27E

12. COUNTY OR PARISH
Eddy County

13. STATE
New Mexico

14. DISTANCE IN MILES AND DIRECTION FROM NEAREST TOWN OR POST OFFICE*
Approximately 7 miles southeast of Artesia, NM

15. DISTANCE FROM PROPOSED LOCATION TO NEAREST PROPERTY OR LEASE LINE, FT.
1575'
(Also to nearest drlg. unit line if any)

16. NO. OF ACRES IN LEASE
40

17. NO. OF ACRES ASSIGNED TO THIS WELL
40

18. DISTANCE FROM PROPOSED LOCATION* TO NEAREST WELL, DRILLING, COMPLETED, OR APPLIED FOR, ON THIS LEASE, FT.
750'

19. PROPOSED DEPTH
2800'

20. ROTARY OR CABLE TOOLS*
Rotary

21. ELEVATIONS (Show whether DF, RT, GR, etc.)
GR 3517'

22. APPROX. DATE WORK WILL START*
February 10, 1998

ROSWELL CONTROLLED WATER BASIN

23. PROPOSED CASING AND CEMENTING PROGRAM				
SIZE OF HOLE	GRADE, SIZE OF CASING	WEIGHT PER FOOT	SETTING DEPTH	QUANTITY OF CEMENT
17 1/2"	14"	Conductor	40'	Redimix
12 1/4"	8 5/8", J-55	24 ppf	1150'	350 sx Lite + 200 sx Class C
7 7/8"	5 1/2", J-55	15.5 ppf	2800'	150 sx Lite + 350 sx Class C

* Cement will be circulated to surface on all casing strings.

Devon Energy plans to drill to 2800' +/- to test the San Andres Formation for commercial quantities of oil. If the San Andres is deemed non-commercial, the wellbore will be plugged and abandoned per Federal regulations. Programs to adhere to onshore oil and gas regulations are outlined in the following exhibits and attachments.

Drilling Program
Surface Use and Operating Plan
Exhibit #1 - Blowout Prevention Equipment/
Choke Manifold
Exhibit #2 - Location and Elevation Plat
Exhibit #3 - Planned Access Roads
Exhibit #4 - Wells Within a One Mile Radius
Exhibit #5 - Production Facilities Plan
Exhibit #6 - Rotary Rig Layout
Exhibit #7 - Casing Design Parameters and Factors
Exhibit #8 - H₂S Operating Plan

The undersigned accepts all applicable terms, conditions, stipulations, and restrictions concerning operations conducted on the leased land or portion thereof, as described above.

Bond Coverage: Nationwide
BLM Bond File No.: CO-1104

APPROVAL SUBJECT TO
GENERAL REQUIREMENTS AND
SPECIAL STIPULATIONS
ATTACHED

Posted 10-1
H L d / 1991
1-30-98
1/12/98

IN ABOVE SPACE DESCRIBE PROPOSED PROGRAM: If proposal is to deepen, give data on present productive zone and proposed new productive zone. If proposal is to drill or deepen directionally, give pertinent data on subsurface locations and measured and true vertical depths. Give blowout preventer program, if any.

24.

SIGNED E. L. Buttross Jr.

E. L. BUTTROSS, JR.
TITLE DISTRICT ENGINEER

DATE 12/17/97

*(This space for Federal or State office use)

PERMIT NO. _____ APPROVAL DATE _____

Application approval does not warrant or certify that the applicant holds legal or equitable title to those rights in the subject lease which would entitle the applicant to conduct operations thereon.
CONDITIONS OF APPROVAL, IF ANY:

APPROVED BY (ORIG. SGD.) ARMANDO A. LOPEZ

TITLE Acting District Engineer
See Instructions On Reverse Side

DATE 12/17/98

DISTRICT I
P.O. Box 1980, Hobbs, NM 88240

State of New Mexico
Energy, Minerals and Natural Resources Department

Exhibit 2

Form C-102
Revised February 10, 1994
Instruction on back
Submit to Appropriate District Office
State Lease - 4 Copies
Fee Lease - 3 Copies

DISTRICT II
P.O. Drawer DD, Artesia, NM 88210

DISTRICT III
1000 Rio Brazos Rd., Aztec, NM 87410

OIL CONSERVATION DIVISION

P.O. Box 2088
Santa Fe, New Mexico 87504-2088

☐ AMENDED REPORT

WELL LOCATION AND ACREAGE DEDICATION PLAT

API Number	Pool Code	Pool Name Red Lake (Q-GB-SA)
Property Code	Property Name COMPTON "33" FEDERAL	Well Number 2
OGRID No.	Operator Name DEVON ENERGY CORPORATION	Elevation 3517'

Surface Location

UL or lot No.	Section	Township	Range	Lot Idn	Feet from the	North/South line	Feet from the	East/West line	County
K	33	17 S	27 E		2410	SOUTH	1575	WEST	EDDY

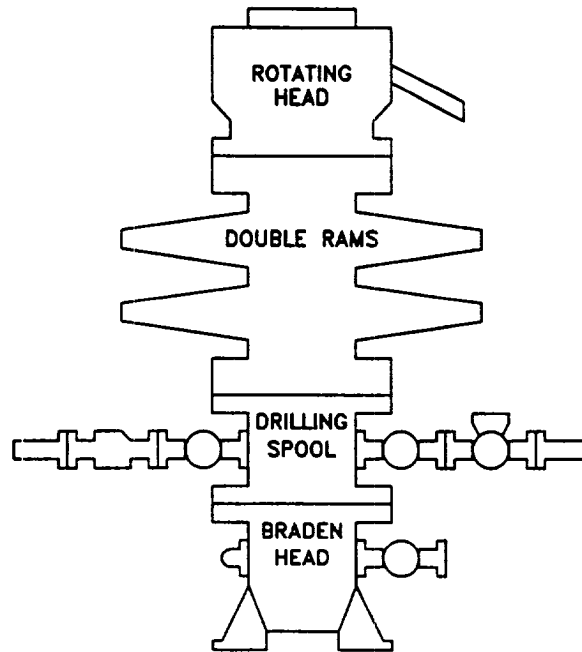
Bottom Hole Location If Different From Surface

UL or lot No.	Section	Township	Range	Lot Idn	Feet from the	North/South line	Feet from the	East/West line	County
Dedicated Acres	Joint or Infill	Consolidation Code	Order No.						

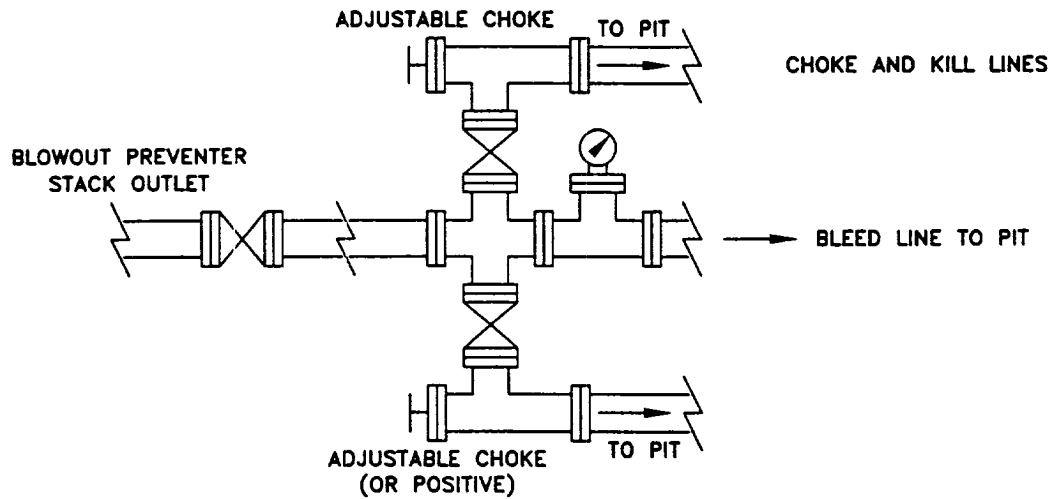
NO ALLOWABLE WILL BE ASSIGNED TO THIS COMPLETION UNTIL ALL INTERESTS HAVE BEEN CONSOLIDATED
OR A NON-STANDARD UNIT HAS BEEN APPROVED BY THE DIVISION

	<p>OPERATOR CERTIFICATION</p> <p>I hereby certify the the information contained herein is true and complete to the best of my knowledge and belief.</p> <p><u>E. L. Buttross Jr.</u> Signature</p> <p>E. L. Buttross, Jr. Printed Name</p> <p>District Engineer Title</p> <p>12/16/97 Date</p>
	<p>SURVEYOR CERTIFICATION</p> <p>I hereby certify that the well location shown on this plat was plotted from field notes of actual surveys made by me or under my supervision, and that the same is true and correct to the best of my belief.</p> <p>November 03, 1997 Date Surveyed</p> <p>GARY L. JONES Signature & Seal Professional Surveyor</p> <p>7077 Certificate No.</p> <p>7977 BASIN SURVEYS</p>

EXHIBIT # 1



CHOKE MANIFOLD REQUIREMENT (2000 psi WP)



devon
ENERGY SERVICES

WEST RED LAKE

EDDY COUNTY, NEW MEXICO

SCHEMATIC

BLOWOUT PREVENTOR

(2000 PSI MINIMUM WP)

WRLBOP	

EB

11/97

Attachment to Exhibit #1
NOTES REGARDING BLOWOUT PREVENTORS
Compton 33 Federal #2
Eddy County, New Mexico

1. Drilling nipple will be constructed so it can be removed mechanically without the aid of a welder. The minimum internal diameter will equal BOP bore.
2. Wear ring will be properly installed in head.
3. Blowout preventor and all associated fittings will be in operable condition and tested to 1000 psi with the right pump.
4. All fittings will be flanged.
5. A full bore safety valve with proper thread connections will be available on the rotary rig floor at all times.
6. All choke lines will be anchored to prevent movement.
7. All BOP equipment will be equal to or larger in bore than the internal diameter of the last casing string.
8. Will maintain a Kelly cock attached to the Kelly.
9. Hand wheels and wrenches will be properly installed and tested for safe operation.
10. All BOP equipment will meet API standards and include a minimum 40 gallon accumulator having two independent means of power to initiate closing operation.