

State of New Mexico
Energy, Minerals & Natural Resources Department

OIL CONSERVATION DIVISION
2040 South Pacheco
Santa Fe, NM 87505

District I
PO Box 1980, Hobbs, NM 88241-1980
District II
811 S. 1st Street, Artesia, NM 88210-2834
District III
1000 Rio Brazos Rd., Aztec, NM 87410
District IV
2040 South Pacheco, Santa Fe, NM 87505

Form C-101
Revised October 18, 1994
Instructions on back
Submit to Appropriate District Office
State Lease - 6 Copies
Fee Lease - 5 Copies

☐ AMENDED REPORT

APPLICATION FOR PERMIT TO DRILL, RE-ENTER, DEEPEN, PLUG BACK, OR ADD A ZONE

¹ Operator name and Address ARCO PERMIAN P.O. BOX 1610 MIDLAND, TX 79702		² OGRID Number 000990
		³ API Number 30-015-30189
⁴ Property Code 22954	⁵ Property Name WASHINGTON "33" STATE	⁶ Well No. 7

⁷ Surface Location

UL or lot no.	Section	Township	Range	Lot. Idn	Feet from the	North/South Line	Feet from the	East/West line	County
E	33	17S	28E		1650	NORTH	970	WEST	EDDY

⁸ Proposed Bottom Hole Location If Different From Surface

UL or lot no.	Section	Township	Range	Lot. Idn	Feet from the	North/South Line	Feet from the	East/West line	County
⁹ Proposed Pool 1 WILDCAT (YESO)					¹⁰ Proposed Pool 2 ARTESIA (O-G-SA)				

¹¹ Work Type Code N	¹² Well Type Code O	¹³ Cable/Rotary R	¹⁴ Lease Type Code S	¹⁵ Ground Level Elevation 3663'
¹⁶ Multiple NO	¹⁷ Proposed Depth 4200	¹⁸ Formation YESO	¹⁹ Contractor	²⁰ Spud Date 4/98

²¹ Proposed Casing and Cement Program

Hole Size	Casing Size	Casing weight/foot	Setting Depth	Sacks of Cement	Estimated TOC
12-1/4	8-5/8	24#	500'	450	CIRC. TO SURF.
7-7/8	5-1/2	15.5#	4200	1200	CIRC. TO SURF.

²² Describe the proposed program. If this application is to DEEPEN or PLUG BACK give the data on the present productive zone and proposed new productive zone. Describe the blowout prevention program, if any. Use additional sheets if necessary

DRILL SURFACE HOLE W/FRESH WATER TO 500'. SET & CEMENT 8-5/8" CASING.
DRILL 7-7/8" HOLE TO 2000' W/SATURATED BRINE. DRILL TO 4200' W/SALT GEL
USING PRE-HYDRATED FW GEL SWEEPS, FL +/- 15 CC. LOG WELL, RUN & CEMENT
5-1/2" CASING. COMPLETE AND TEST YESO FORMATION

SUBJECT WELL PLANNED AS A 4200' STRAIGHT HOLE.
3000 PSI BOPE WILL BE USED FORM 500' TO TD.

Posted TO-1
N & ART
4-10-98

²³ I hereby certify that the information given above is true and complete to the best of my knowledge and belief.

Signature: *Elizabeth A. Casbeer*
Printed name: ELIZABETH A. CASBEER
Title: REG/COMP ANALYST

OIL CONSERVATION DIVISION	
Approved by:	ORIGINAL SIGNED BY TIM W. GUM
Title:	DISTRICT II SUPERVISOR
Approval Date: 4-2-98	Expiration Date: 4-2-99

DISTRICT I
P.O. Box 1980, Hobbs, NM 88241-1980

State of New Mexico
Energy, Minerals and Natural Resources Department

Form C-102
Revised February 10, 1994
Submit to Appropriate District Office
State Lease - 4 Copies
Fee Lease - 3 Copies

DISTRICT II
P.O. Drawer DD, Artesia, NM 88211-0719

DISTRICT III
1000 Rio Brazos Rd., Aztec, NM 87410

DISTRICT IV
P.O. BOX 2088, SANTA FE, N.M. 87504-2088

OIL CONSERVATION DIVISION
P.O. Box 2088
Santa Fe, New Mexico 87504-2088

☐ AMENDED REPORT

WELL LOCATION AND ACREAGE DEDICATION PLAT

API Number	Pool Code	Pool Name
		WILDCAT (YESO) & ARTESIA (Q-G-SA)
Property Code	Property Name	Well Number
	WASHINGTON 33 STATE	7
OGRID No.	Operator Name	Elevation
000990	ARCO PERMIAN	3663'

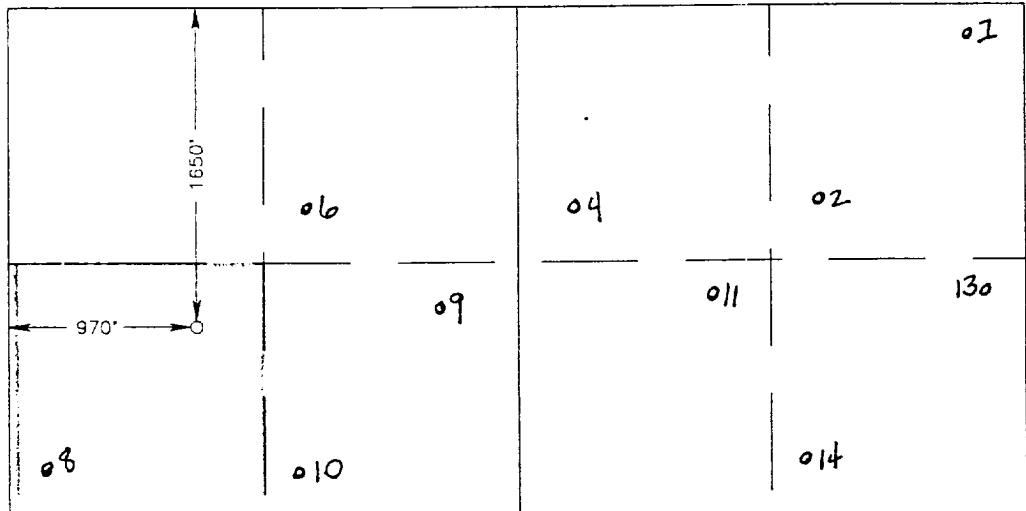
Surface Location

UL or lot No.	Section	Township	Range	Lot Idn	Feet from the	North/South line	Feet from the	East/West line	County
E	33	17 S	28 E		1650	NORTH	970	WEST	EDDY

Bottom Hole Location If Different From Surface

UL or lot No.	Section	Township	Range	Lot Idn	Feet from the	North/South line	Feet from the	East/West line	County
Dedicated Acres		Joint or Infill		Consolidation Code		Order No.			
40									

NO ALLOWABLE WILL BE ASSIGNED TO THIS COMPLETION UNTIL ALL INTERESTS HAVE BEEN CONSOLIDATED
OR A NON-STANDARD UNIT HAS BEEN APPROVED BY THE DIVISION

				<p>01</p>	
06		04		02	
09		011		130	
08		010		014	
021					
022					

OPERATOR CERTIFICATION

I hereby certify the the information contained herein is true and complete to the best of my knowledge and belief.

Elizabeth G. Casbeer
Signature

ELIZABETH CASBEER
Printed Name

REG/COMP. ANALYST
Title

3/23/98
Date

SURVEYOR CERTIFICATION

I hereby certify that the well location shown on this plat was plotted from field notes of actual surveys made by me or under my supervision, and that the same is true and correct to the best of my belief.

FEBRUARY 26, 1998

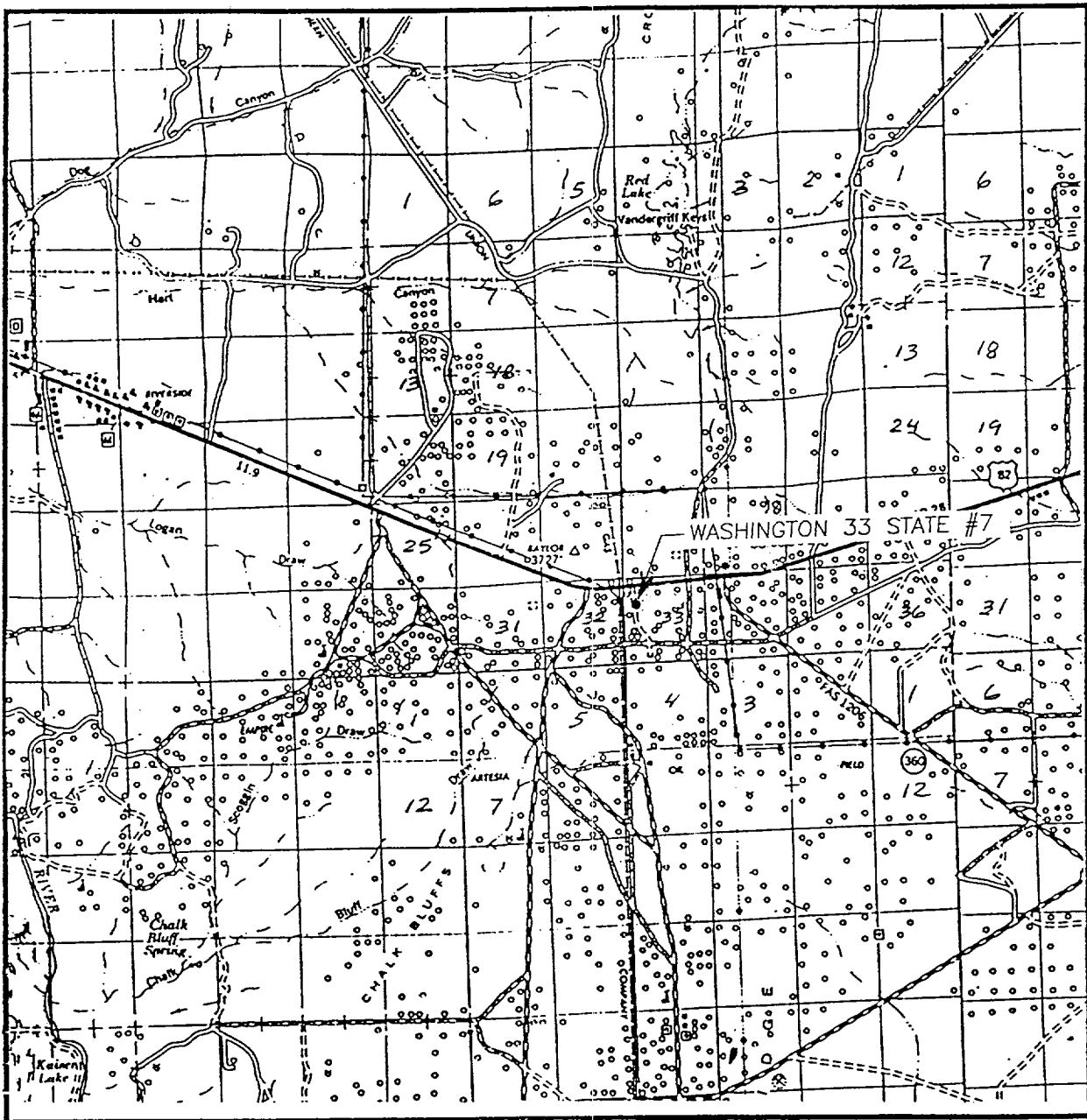
Date Surveyed CDG

Signature & Seal of Professional Surveyor

Ronald G. Edson
RONALD G. EDSON
3-04-98
98-11-0350

Certificate No. 3239
12641

VICINITY MAP



SCALE: 1" = 2 MILES

SEC. 33 TWP. 17-S RGE. 28-E

SURVEY N.M.P.M.

COUNTY EDDY

DESCRIPTION 1650' FNL & 970' FWL

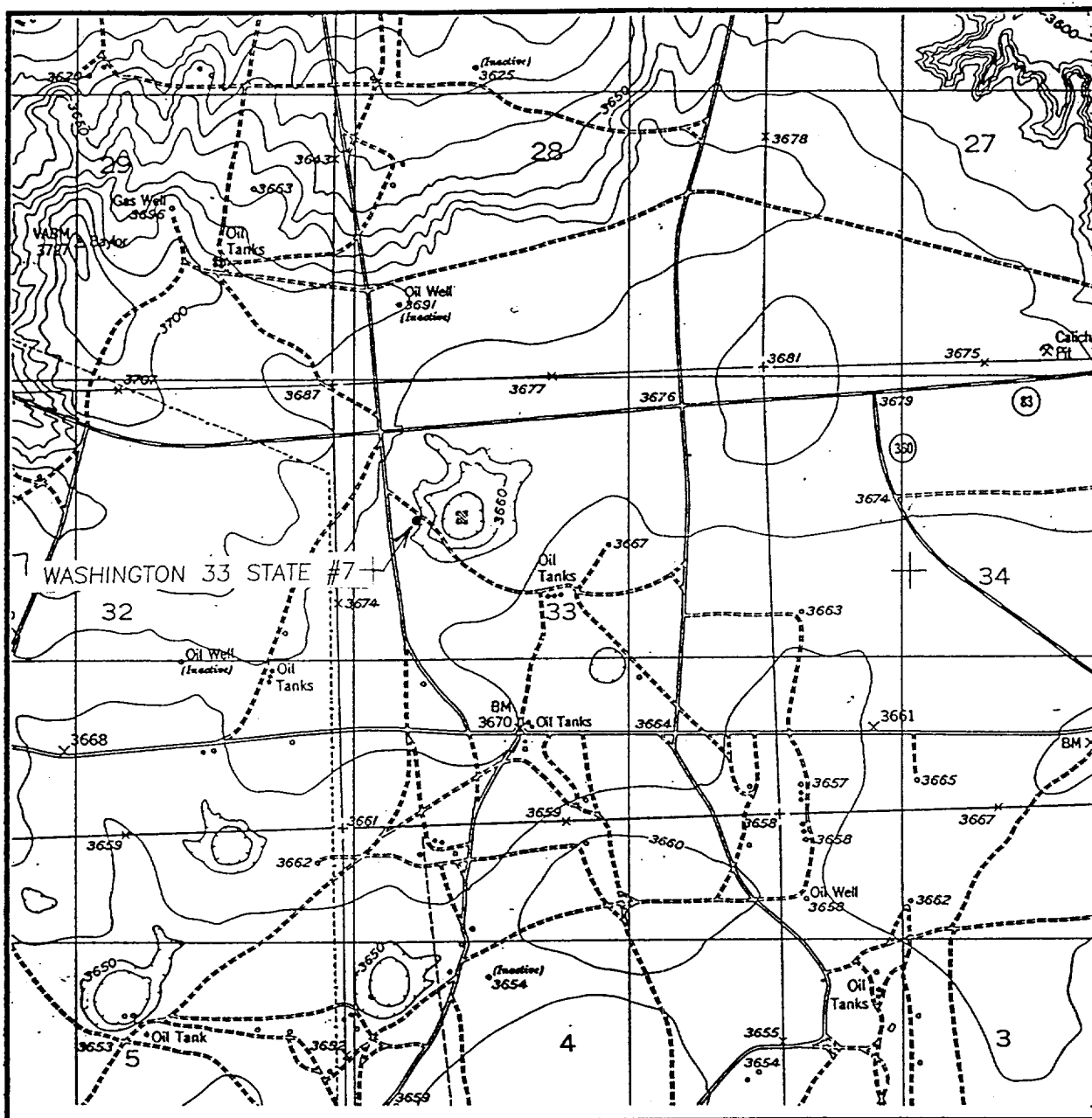
ELEVATION 3663'

OPERATOR ARCO PERMIAN

LEASE WASHINGTON 33 STATE

JOHN WEST ENGINEERING
HOBBS, NEW MEXICO
(505) 393-3117

LOCATION VERIFICATION MAP



SCALE: 1" = 2000'

CONTOUR INTERVAL - 10'

SEC. 33 TWP. 17-S RGE. 28-E

SURVEY N.M.P.M.

COUNTY EDDY

DESCRIPTION 1650' FNL & 970' FWL

ELEVATION 3663'

OPERATOR ARCO PERMIAN

LEASE WASHINGTON 33 STATE

U.S.G.S. TOPOGRAPHIC MAP

RED LAKE, NM

JOHN WEST ENGINEERING
HOBBS, NEW MEXICO
(505) 393-3117