

District I
PO Box 1980, Hobbs, NM 88241-1980
District II
811 S. 1st Street, Artesia, NM 88210-2834
District III
1000 Rio Brazos Rd., Aztec, NM 87410
District IV
2040 South Pacheco, Santa Fe, NM 87505

State of New Mexico
Energy, Minerals & Natural Resources Department

OIL CONSERVATION DIVISION
2040 South Pacheco
Santa Fe, NM 87505

Form C-101
Revised October 18, 1994
Instructions on back
Submit to Appropriate District Office
State Lease - 6 Copies
Fee Lease - 5 Copies

☐ AMENDED REPORT

APPLICATION FOR PERMIT TO DRILL, RE-ENTER, DEEPEN, PLUGBACK, OR ADD A ZONE

¹ Operator name and Address ARCO PERMIAN P.O. BOX 1610 MIDLAND, TX 79702		² OGRID Number 000990
³ API Number 30-015-30192		⁴ Property Code 22954
⁵ Property Name WASHINGTON "33" STATE		⁶ Well No. 10

⁷ Surface Location									
UL or lot no.	Section	Township	Range	Lot. Idn	Feet from the	North/South Line	Feet from the	East/West line	County
F	33	17S	28E		2267	NORTH	1650	WEST	EDDY

⁸ Proposed Bottom Hole Location If Different From Surface									
UL or lot no.	Section	Township	Range	Lot. Idn	Feet from the	North/South Line	Feet from the	East/West line	County
⁹ Proposed Pool 1 ARTESIA (Q-G-SA)					¹⁰ Proposed Pool 2				

¹¹ Work Type Code N	¹² Well Type Code O	¹³ Cable/Rotary R	¹⁴ Lease Type Code S	¹⁵ Ground Level Elevation 3673'
¹⁶ Multiple NO	¹⁷ Proposed Depth 3200	¹⁸ Formation SAN ANDRES	¹⁹ Contractor	²⁰ Spud Date 4/98

²¹ Proposed Casing and Cement Program					
Hole Size	Casing Size	Casing weigh/foot	Setting Depth	Sacks of Cement	Estimated TOC
12-1/4	8-5/8	24#	500'	450	CIRC. TO SURE.
7-7/8	5-1/2	15.5#	3200	1200	CIRC. TO SURE.

²² Describe the proposed program. If this application is to DEEPEN or PLUG BACK give the data on the present productive zone and proposed new productive zone. Describe the blowout prevention program, if any. Use additional sheets if necessary

DRILL SURFACE HOLE W/FRESH WATER TO 500'. SET & CEMENT 8-5/8" CASING.
DRILL 7-7/8" HOLE TO 2000; W/SATURATED BRINE. DRILL 3200' TD W/ SACT GEL
USING PRE-HYDRATED FW GEL SWEEPS. FL +/- 15CC. LOG WELL, RUN & CEMENT
5-1/2" CASING. COMPLETE AND TEST SAN ANDRES FORMATION.

SUBJECT WELL PLANNED AS A 3200' STRAIGHT HOLE.
3000 PSI BOPE WILL BE USED FORM 500' TO TD.

Posted 10-1
H & A
4-10-98

²³ I hereby certify that the information given above is true and complete to the best of my knowledge and belief.

Signature: *Elizabeth A. Casbeer*

Printed name: ELIZABETH A. CASBEER

Title: REG./COMP. ANALYST

OIL CONSERVATION DIVISION

Approved by: ORIGINAL SIGNED BY TIM W. GUN

Title: DISTRICT II SUPERVISOR

Approval Date: 4-2-98

Expiration Date: 4-2-99

DISTRICT I
P.O. Box 1980, Hobbs, NM 88241-1980

State of New Mexico
Energy, Minerals and Natural Resources Department

Form C-102
Revised February 10, 1994
Submit to Appropriate District Office
State Lease - 4 Copies
Fee Lease - 3 Copies

DISTRICT II
P.O. Drawer DD, Artesia, NM 88211-0719

DISTRICT III
1000 Rio Brazos Rd., Aztec, NM 87410

DISTRICT IV
P.O. BOX 2088, SANTA FE, N.M. 87504-2088

OIL CONSERVATION DIVISION
P.O. Box 2088
Santa Fe, New Mexico 87504-2088

☐ AMENDED REPORT

WELL LOCATION AND ACREAGE DEDICATION PLAT

API Number	Pool Code	Pool Name
Property Code	Property Name	Well Number
OGRID No.	Operator Name	Elevation
000990	WASHINGTON 33 STATE ARCO PERMIAN	10 3673'

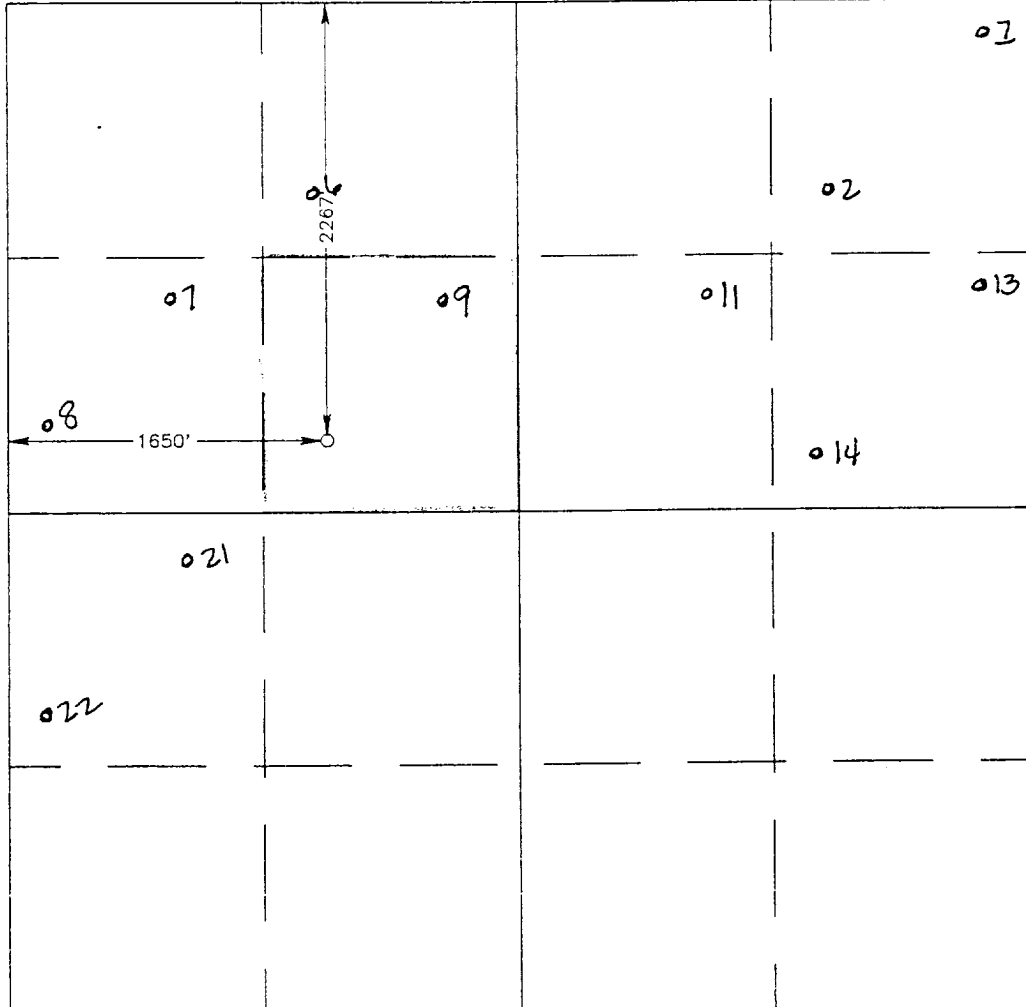
Surface Location

UL or lot No.	Section	Township	Range	Lot Idn	Feet from the	North/South line	Feet from the	East/West line	County
F	33	17 S	28 E		2267	NORTH	1650	WEST	EDDY

Bottom Hole Location If Different From Surface

UL or lot No.	Section	Township	Range	Lot Idn	Feet from the	North/South line	Feet from the	East/West line	County
Dedicated Acres	Joint or Infill	Consolidation Code	Order No.						
40									

NO ALLOWABLE WILL BE ASSIGNED TO THIS COMPLETION UNTIL ALL INTERESTS HAVE BEEN CONSOLIDATED
OR A NON-STANDARD UNIT HAS BEEN APPROVED BY THE DIVISION

				<p>01</p> <p>02</p> <p>011</p> <p>013</p> <p>014</p>	
<p>01</p> <p>09</p> <p>021</p> <p>022</p>					

OPERATOR CERTIFICATION

I hereby certify that the information contained herein is true and complete to the best of my knowledge and belief.

Elizabeth G. Casbeer
Signature

ELIZABETH CASBEER
Printed Name

REG/COMP. ANALYST
Title

3/23/98
Date

SURVEYOR CERTIFICATION

I hereby certify that the well location shown on this plat was plotted from field notes of actual surveys made by me or under my supervision, and that the same is true and correct to the best of my belief.

FEBRUARY 26, 1998

Date Surveyed

Signature and Seal of Professional Surveyor

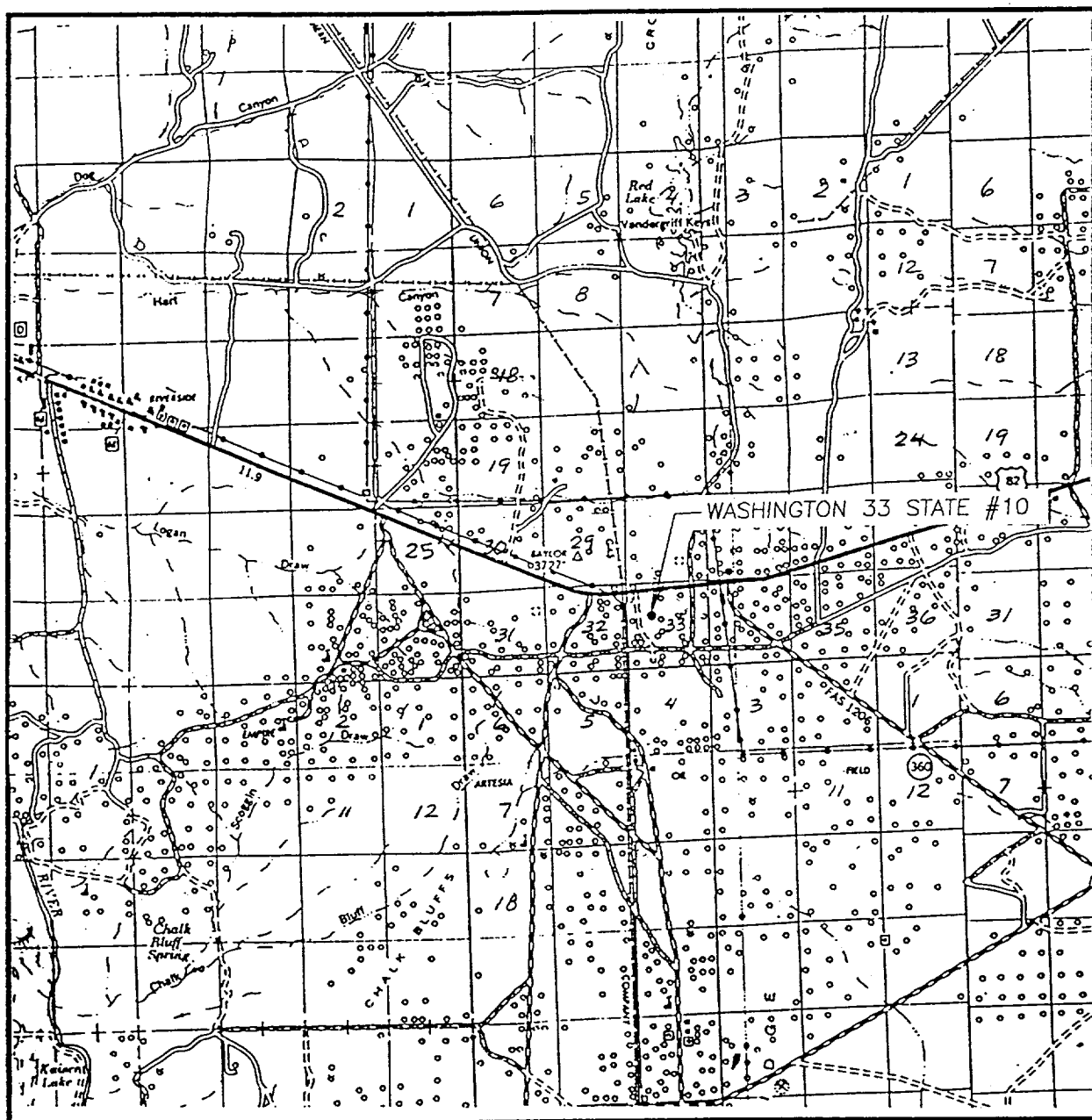
RONALD EDSON
Professional Surveyor

3239
3-04-98

CDG

Certificate No. 12641

VICINITY MAP



SCALE: 1" = 2 MILES

SEC. 33 TWP. 17-S RGE. 28-E

SURVEY N.M.P.M.

COUNTY EDDY

DESCRIPTION 2267' FNL & 1650' FWL

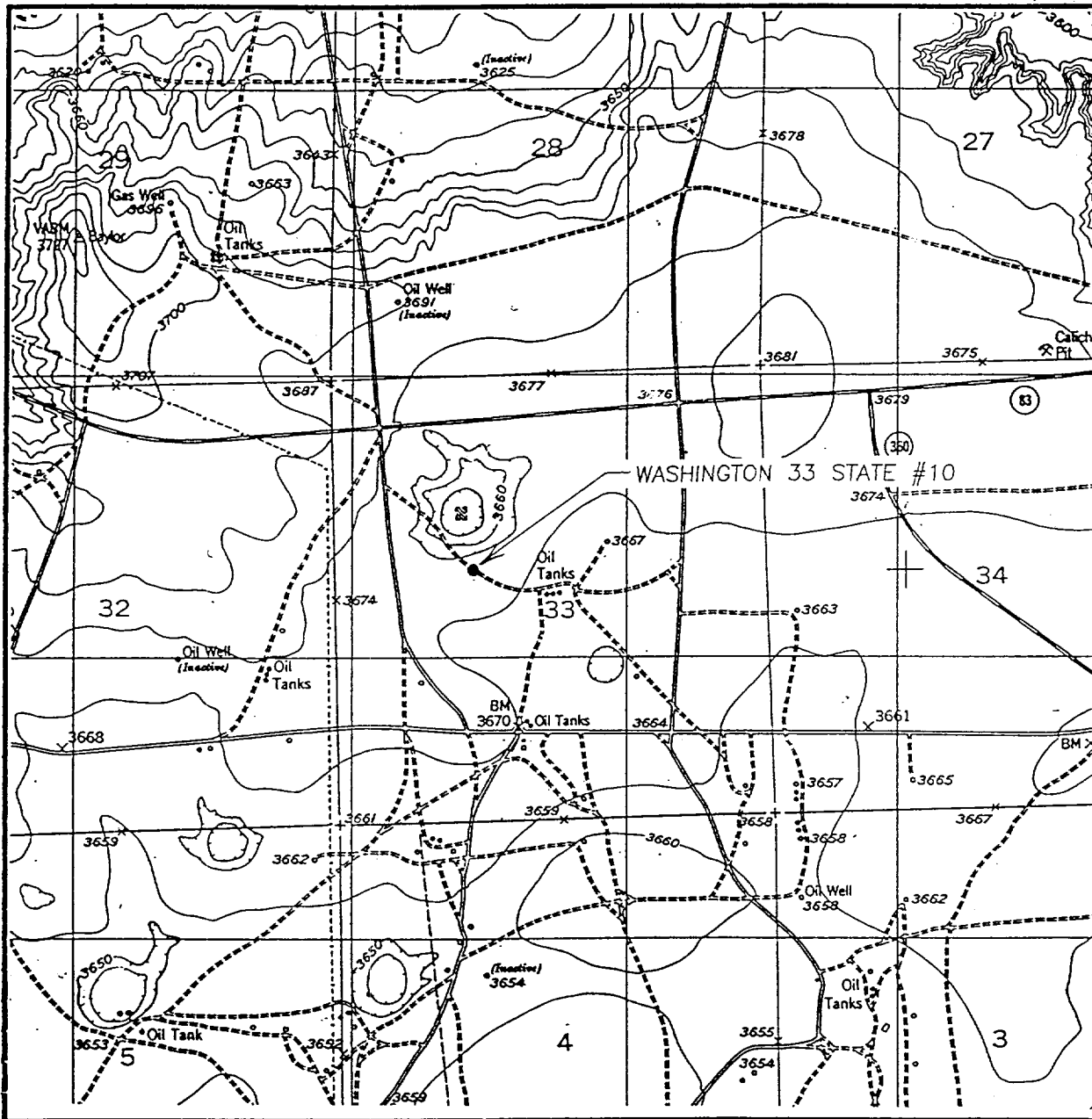
ELEVATION 3673'

OPERATOR ARCO PERMIAN

LEASE WASHINGTON 33 STATE

JOHN WEST ENGINEERING
HOBBS, NEW MEXICO
(505) 393-3117

LOCATION VERIFICATION MAP



SCALE: 1" = 2000'

CONTOUR INTERVAL - 10'

SEC. 33 TWP. 17-S RGE. 28-E

SURVEY N.M.P.M.

COUNTY EDDY

DESCRIPTION 2267' FNL & 1650' FWL

ELEVATION 3673'

OPERATOR ARCO PERMIAN

LEASE WASHINGTON 33 STATE

U.S.G.S. TOPOGRAPHIC MAP

RED LAKE, NM

JOHN WEST ENGINEERING
HOBBS, NEW MEXICO
(505) 393-3117