

District I
PO Box 1980, Hobbs, NM 88241-1980

District II
PO Drawer DD, Artesia, NM 88211-0719

District III
1000 Rio Brazos Rd., Aztec, NM 87410

District IV
PO Box 2088, Santa Fe, NM 87504-2088

State of New Mexico
Energy, Minerals & Natural Resources Department

OIL CONSERVATION DIVISION
PO Box 2088
Santa Fe, NM 87504-2088

Form C-101
Revised February 10, 1994
Instructions on back
Submit to Appropriate District Office
State Lease - 6 Copies
Fee Lease - 5 Copies

APR 1998
RECEIVED
OCD - ARTESIA

AMENDED REPORT

APPLICATION FOR PERMIT TO DRILL, RE-ENTER, DEEPEN, PLUGBACK, OR ADD A ZONE

² Operator Name and Address. Devon Energy Corporation (Nevada) 1500 Mid America Tower 20 N. Broadway Oklahoma City, OK 73102-8260		¹ OGRID Number 6137
		³ API Number 30-015- 30202
⁴ Property Code 23150	⁵ Property Name HEARD STATE	⁶ Well No. 1

⁷ Surface Location

UL or lot no. N	Section 32	Township 17S	Range 27E	Lot lds	Feet from the 330	North/South line South	Feet from the 2010	East/West line West	County Eddy
--------------------	---------------	-----------------	--------------	---------	----------------------	---------------------------	-----------------------	------------------------	----------------

⁸ Proposed Bottom Hole Location If Different From Surface

UL or lot no.	Section	Township	Range	Lot lds	Feet from the	North/South line	Feet from the	East/West line	County
⁹ Proposed Pool 1 Red Lake (Q-GB-SA)						¹⁰ Proposed Pool 2			

¹¹ Work Type Code N	¹² Well Type Code O	¹³ Cable/Rotary Rotary	¹⁴ Lease Type Code S	¹⁵ Ground Level Elevation 3450'
¹⁶ Multiple No	¹⁷ Proposed Depth 2600'	¹⁸ Formation San Andres	¹⁹ Contractor Unknown	²⁰ Spud Date May 1, 1998

²¹ Proposed Casing and Cement Program

Hole Size	Casing Size	Casing weight/foot	Setting Depth	Sacks of Cement	Estimated TOC
17 1/2"	14"	Conductor	40'	Readymix	surface
12 1/4"	8 5/8"	24 ppf	1100'	300 lite, 200 "C"	surface
7 7/8"	5 1/2"	15.5 ppf	2600'	100 lite, 300 "C"	surface

²² Describe the proposed program. If this application is to DEEPEN or PLUG BACK give the data on the present productive zone and proposed new productive zone. Describe the blowout prevention program, if any. Use additional sheets if necessary.

We plan to drill this well to a total depth of +/- 2600' and complete it as an oil well. If the well is deemed non-commercial, then it will be plugged and abandoned in accordance with the rules established by the OCD of New Mexico. BOP's will be installed while drilling the production hole.

Posted IO-1
NLA API
4-10-98

²³ I hereby certify that the information given above is true and complete to the best of my knowledge and belief.		OIL CONSERVATION DIVISION	
Signature: <i>E. L. Buttross Jr.</i>		Approved by: ORIGINAL SIGNED BY THE D. C. C.	
Printed name: E. L. Buttross Jr.		Title: DISTRICT II SUPERVISOR	
Title: District Engineer		Approval Date: 4-8-98	Expiration Date: 4-8-98
Date: 3/27/98	Phone: (405) 235-3611 x 4509	Conditions of Approval:	
		Attached <input type="checkbox"/>	

DISTRICT I
P.O. Box 1980, Hobbs, NM 88240

DISTRICT II
P.O. Drawer DD, Artesia, NM 88210

DISTRICT III
1000 Rio Brazos Rd., Aztec, NM 87410

State of New Mexico
Energy, Minerals and Natural Resources Department

Form C-102
Revised February 10, 1994
Instruction on back
Submit to Appropriate District Office
State Lease - 4 Copies
Fee Lease - 3 Copies

OIL CONSERVATION DIVISION
P.O. Box 2088
Santa Fe, New Mexico 87504-2088

☐ AMENDED REPORT

WELL LOCATION AND ACREAGE DEDICATION PLAT

API Number	Pool Code	Pool Name Red Lake (Q-GB-SA)
Property Code	Property Name Heard State	Well Number 1
OGRID No.	Operator Name Devon Energy Corporation	Elevation 3450'

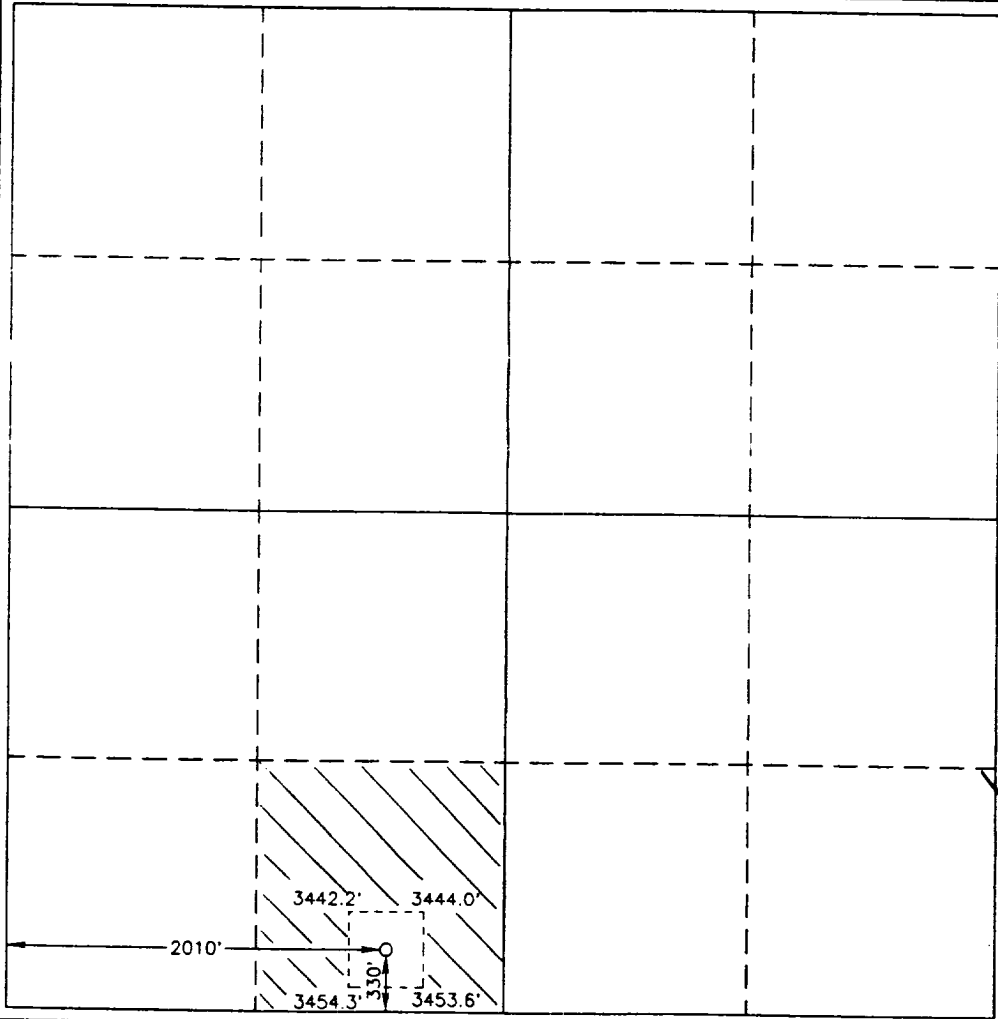
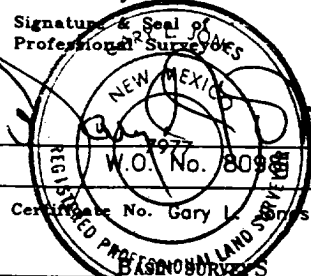
Surface Location

UL or lot No. N	Section 32	Township 17 S	Range 27 E	Lot Idn	Feet from the 330	North/South line South	Feet from the 2010	East/West line West	County Eddy
--------------------	---------------	------------------	---------------	---------	----------------------	---------------------------	-----------------------	------------------------	----------------

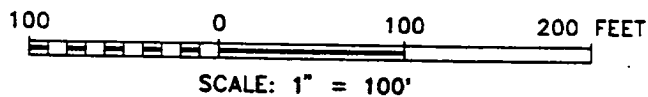
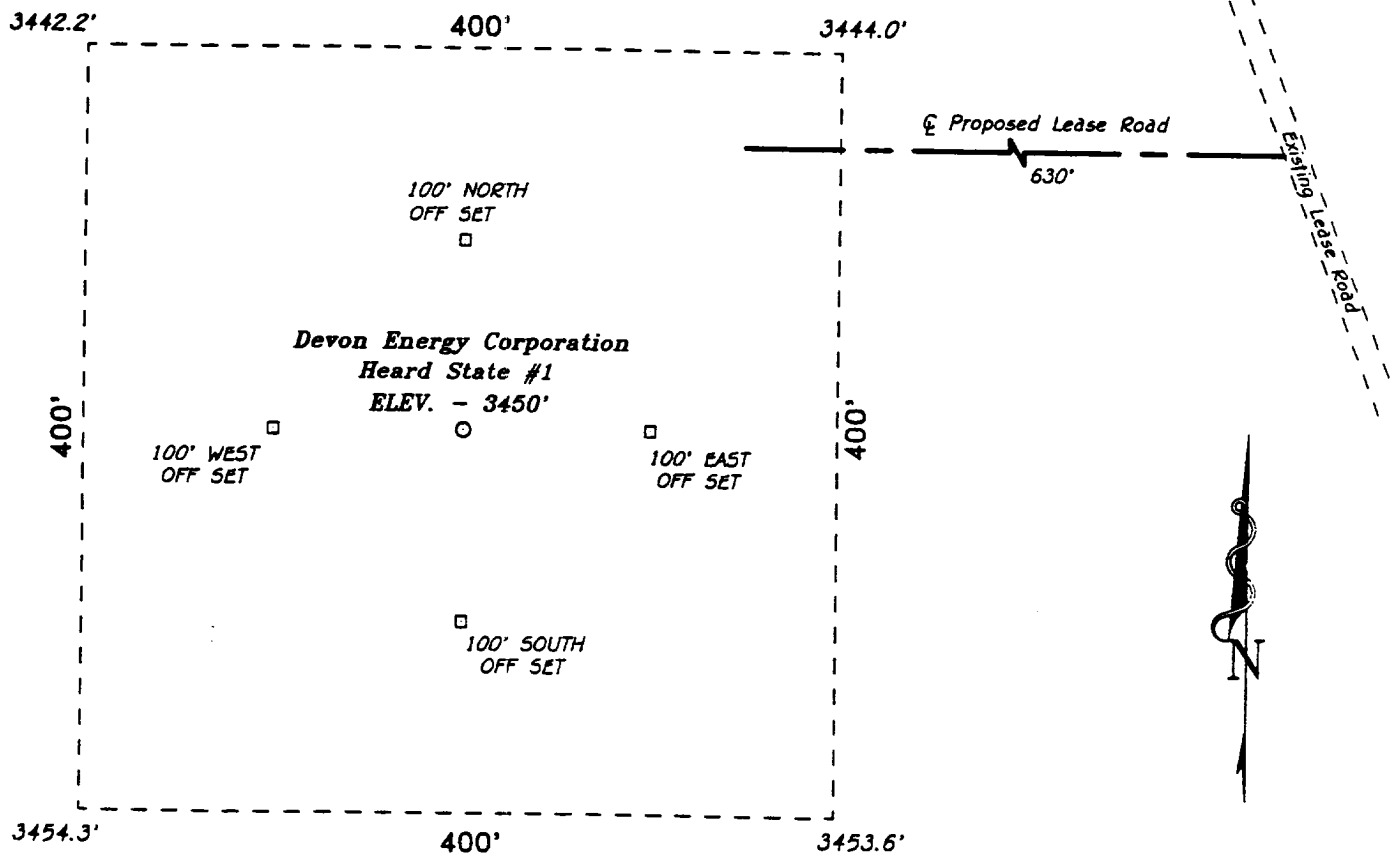
Bottom Hole Location If Different From Surface

UL or lot No.	Section	Township	Range	Lot Idn	Feet from the	North/South line	Feet from the	East/West line	County
Dedicated Acres		Joint or Infill	Consolidation Code	Order No.					

NO ALLOWABLE WILL BE ASSIGNED TO THIS COMPLETION UNTIL ALL INTERESTS HAVE BEEN CONSOLIDATED
OR A NON-STANDARD UNIT HAS BEEN APPROVED BY THE DIVISION

	OPERATOR CERTIFICATION <i>I hereby certify the the information contained herein is true and complete to the best of my knowledge and belief.</i> <u>E.L. Buttross Jr.</u> Signature <u>E.L. Buttross Jr.</u> Printed Name <u>District Engineer</u> Title <u>3/27/98</u> Date
	SURVEYOR CERTIFICATION <i>I hereby certify that the well location shown on this plat was plotted from field notes of actual surveys made by me or under my supervision and that the same is true and correct to the best of my belief.</i> <u>February 20, 1998</u> Date Surveyed Signature & Seal of Professional Surveyor  Certificate No. Gary L. Jones 7977

SECTION 32, TOWNSHIP 17 SOUTH, RANGE 27 EAST, N.M.P.M.,
EDDY COUNTY, NEW MEXICO.



Devon Energy Corporation

REF: Heard State No. 1 / Well Pad Topo

THE HEARD STATE No. 1 LOCATED 330' FROM
THE SOUTH LINE AND 2010' FROM THE WEST LINE OF
SECTION 32, TOWNSHIP 17 SOUTH, RANGE 27 EAST,
N.M.P.M., EDDY COUNTY, NEW MEXICO.

BASIN SURVEYS P.O. BOX 1786 - HOBBS, NEW MEXICO

W.O. Number: 8098

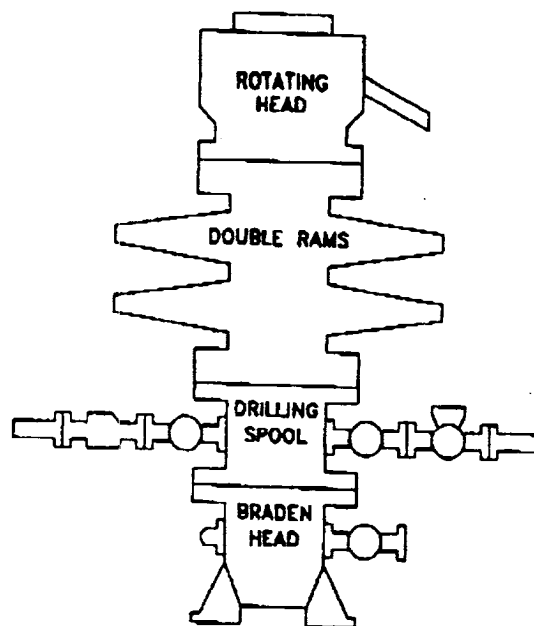
Drawn By: S.C. NICHOLS

Date: 02-26-98

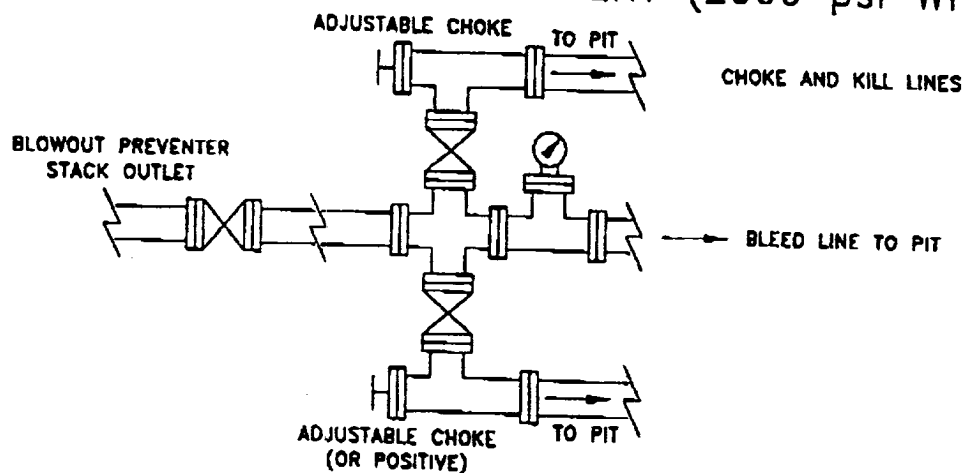
Disk: SCN #39 - 8098JJ.DWG

Survey Date: 02-20-98

Sheet 1 of 1 Sheets



CHOKE MANIFOLD REQUIREMENT (2000 psi WP)



devon

WEST RED LAKE

GRAY COUNTY, NEW MEXICO

BLOWOUT PREVENTOR
(2000 PSI WORKING WP)

WRL-001	