

DISTRICT I
P.O. Box 1980, Hobbs, NM 88241-1980

DISTRICT II
P.O. Drawer DD, Artesia, NM 88211-0719

DISTRICT III
1000 Rio Brazos Rd., Aztec, NM 87410

DISTRICT IV
P.O. Box 2088, Santa Fe, N.M. 87504-2088

State of New Mexico
Energy, Minerals and Natural Resources Department

Form C-102
Revised February 10, 1994
Submit to Appropriate District Office
State Lease - 4 Copies
Fee Lease - 3 Copies

OIL CONSERVATION DIVISION

P.O. Box 2088
Santa Fe, New Mexico 87504-2088

☐ AMENDED REPORT

WELL LOCATION AND ACREAGE DEDICATION PLAT

API Number	Pool Code	Pool Name
		Wildcat, Morrow
Property Code	Property Name	Well Number
	EAGLE CREEK 14	1
OGRID No. 015742	Operator Name	Elevation
	NEARBURG PRODUCING COMPANY	3497'

Surface Location

UL or lot No.	Section	Township	Range	Lot Idn	Feet from the	North/South line	Feet from the	East/West line	County
C	14	17 S	25 E		1070	NORTH	2061	WEST	EDDY

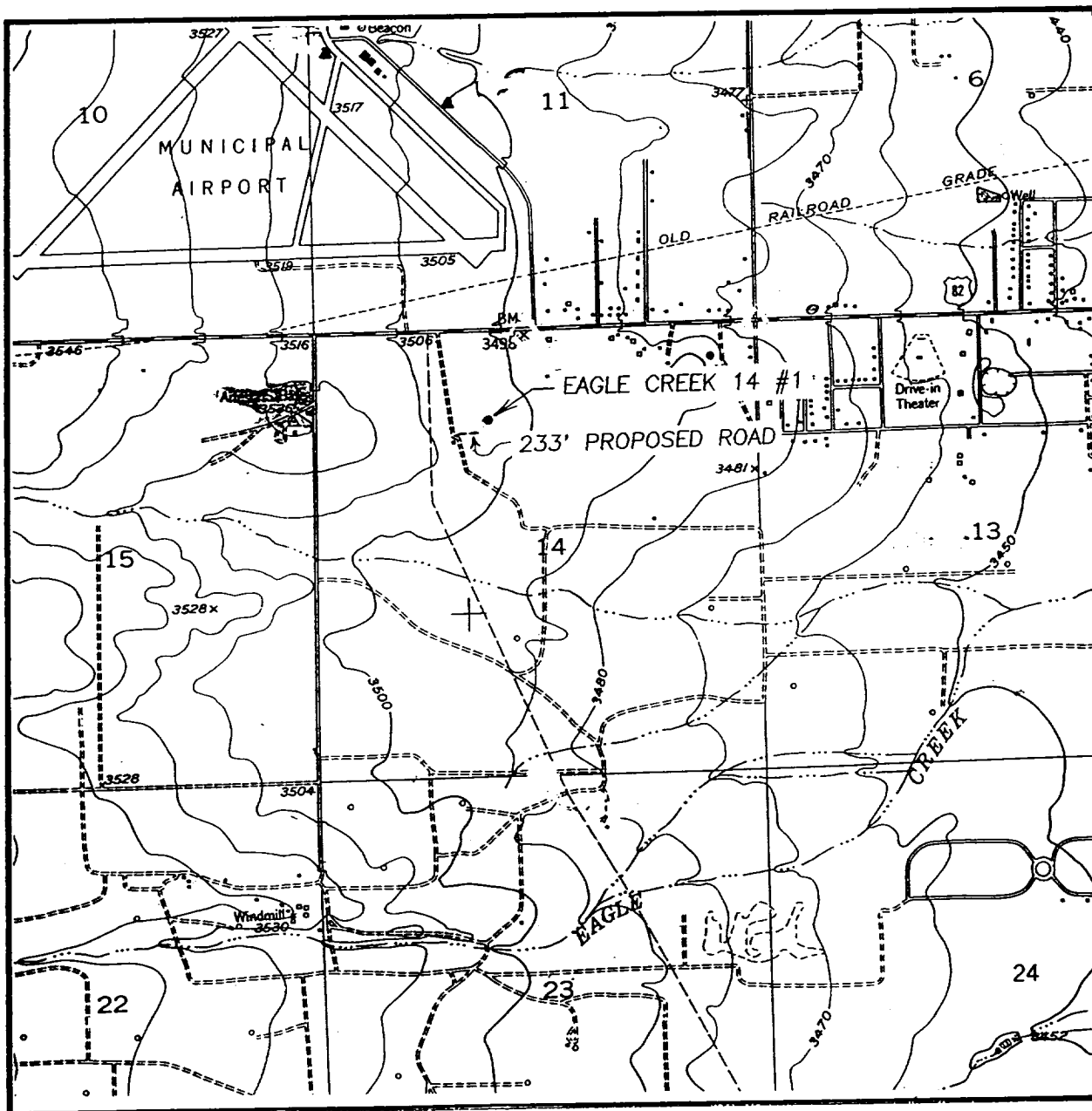
Bottom Hole Location If Different From Surface

UL or lot No.	Section	Township	Range	Lot Idn	Feet from the	North/South line	Feet from the	East/West line	County
Dedicated Acres	Joint or Infill	Consolidation Code	Order No.						
320	J								

NO ALLOWABLE WILL BE ASSIGNED TO THIS COMPLETION UNTIL ALL INTERESTS HAVE BEEN CONSOLIDATED
OR A NON-STANDARD UNIT HAS BEEN APPROVED BY THE DIVISION

	<p>OPERATOR CERTIFICATION</p> <p>I hereby certify the the information contained herein is true and complete to the best of my knowledge and belief.</p> <p><i>E. Scott Kimbrough</i> Signature E. SCOTT KIMBROUGH Printed Name MGR OF DULG: PROD Title 5/11/98 Date</p> <p>SURVEYOR CERTIFICATION</p> <p>I hereby certify that the well location shown on this plat was plotted from field notes of actual surveys made by me or under my supervision and that the same is true and correct to the best of my belief.</p> <p>APRIL 21, 1998</p> <p>Date Surveyed Signature of Surveyor Professional Surveyor NEW MEXICO 3239 4-24-98 18-11-0588 Certificate No. RONALD J. EDSON 3239 Professional Surveyor 12641</p>
--	--

LOCATION VERIFICATION MAP



SCALE: 1" = 2000'

CONTOUR INTERVAL - 10'

SEC. 14 TWP. 17-S RGE. 25-E

SURVEY N.M.P.M.

COUNTY EDDY

DESCRIPTION 1070' FSL & 2061' FWL

ELEVATION 3497'

OPERATOR NEARBURG PRODUCING COMPANY

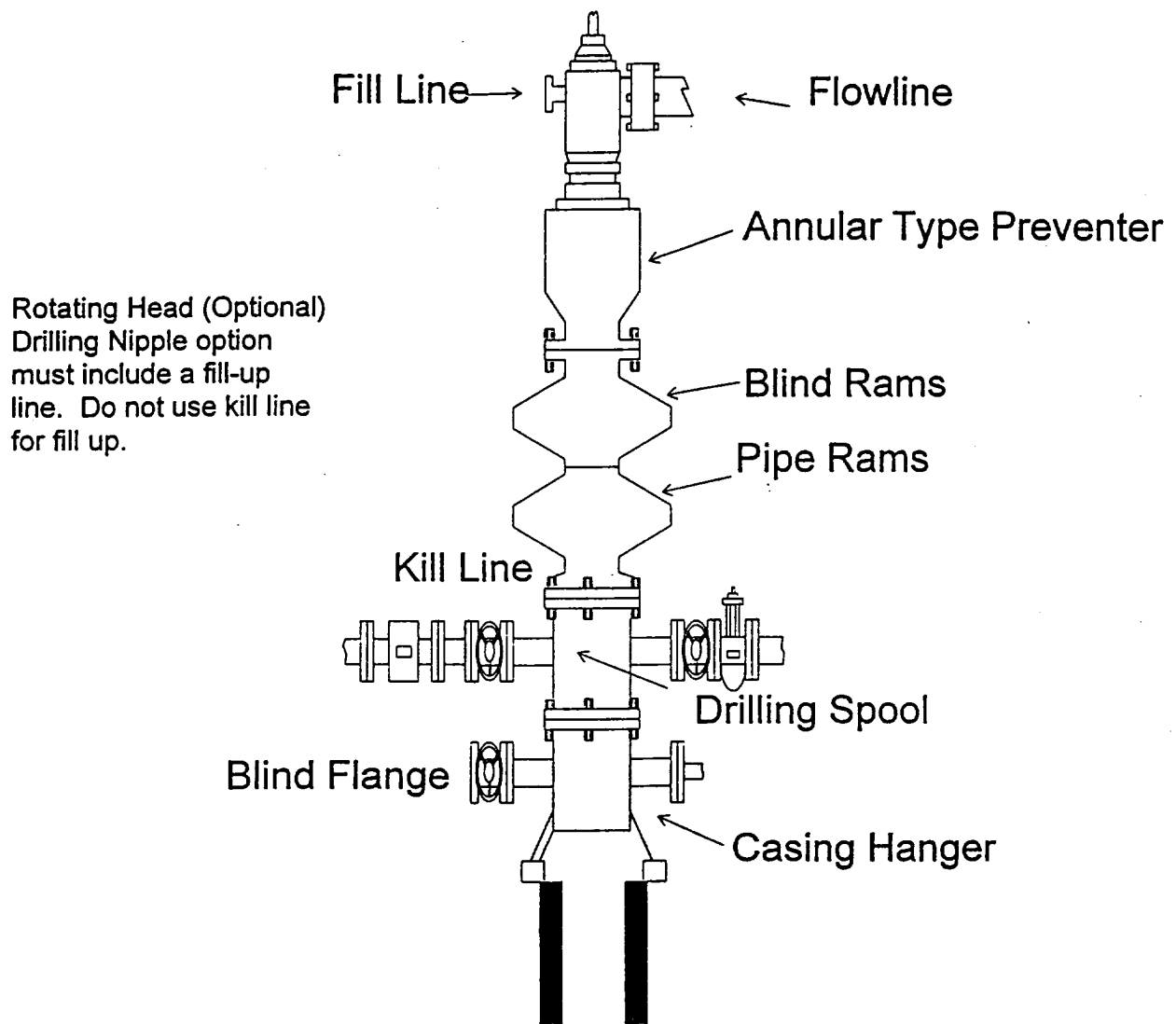
LEASE EAGLE CREEK 14

U.S.G.S. TOPOGRAPHIC MAP

ARTESIA, NM

JOHN WEST ENGINEERING
HOBBS, NEW MEXICO
(505) 393-3117

NEARBURG PRODUCING COMPANY
BOPE SCHEMATIC



900 Series

NEARBURG PRODUCING COMPANY
CHOKE MANIFOLD
2M AND 3M SERVICE

