

District I
PO Box 1980, Hobbs, NM 88241-1980
District II
PO Drawer DD, Artesia, NM 88211-0719
District III
1000 Rio Brazos Rd., Aztec, NM 87410
District IV
PO Box 2088, Santa Fe, NM 87504-2088

State of New Mexico
Energy, Minerals & Natural Resources Department

OIL CONSERVATION DIVISION
PO Box 2088
Santa Fe, NM 87504-2088

Form C-101
Revised February 10, 1994
Instructions on back
Submit to Appropriate District Office
State Lease - 6 Copies
Fee Lease - 5 Copies

RECEIVED

AMENDED REPORT

APPLICATION FOR PERMIT TO DRILL, RE-ENTER, DEEPEN, PLUGBACK, OR ADD A ZONE

Operator Name and Address: OXY USA Inc. P.O. Box 50250 Midland, TX 79710-0250		OGRID Number 16696
Property Name OXY Magni State <i>Com</i>		API Number 30-015-30372
Property Code 23596	Well No. 1	

Surface Location

UL or lot no.	Section	Township	Range	Lot Idn	Feet from the	North/South line	Feet from the	East/West line	County
K	10	17S	27E		1650	South	1980	West	Eddy

Proposed Bottom Hole Location If Different From Surface

UL or lot no.	Section	Township	Range	Lot Idn	Feet from the	North/South line	Feet from the	East/West line	County
Proposed Pool 1 Undesignated Logan Draw Morrow					80400	Proposed Pool 2			

Work Type Code N	Well Type Code G	Casing/Wellbore R	Lease Type Code S	Ground Level Elevation 3402'
Multiple No	Proposed Depth 9800'	Formation Morrow	Contractor N/A	Spud Date 9/1/98

Proposed Casing and Cement Program

Hole Size	Casing Size	Casing weight/foot	Setting Depth	Sacks of Cement	Estimated TOC
17-1/2"	13-3/8"	48#	400'	420	Surface
12 1/4"	8-5/8"	24#	1800'	515	Surface
7-7/8"	4-1/2"	11.6#	9800'	605	6000'
18 Holes wcc on 13 3/8 x 8 3/8 casing					

Describe the proposed program. If this application is to DEEPEN or PLUG BACK give the data on the previous productive zone and proposed new productive zone. Describe the blowout prevention program, if any. Use additional sheets if necessary.

Post ID-1
8-14-98
API + Loc

SEE OTHER SIDE

Notify N.M.O.C.C. in sufficient
time to witness cementing
the 8 5/8" casing

I hereby certify that the information given above is true and complete to the best of my knowledge and belief. Signature: <i>David Stewart</i>		OIL CONSERVATION DIVISION	
Printed name: David Stewart		Approved by: <i>John W. Brown BAA</i>	
Title: Regulatory Analyst		Title: District Supervisor	
Date: 8/7/98		Approval Date: 8-10-98	Expiration Date: 8-10-99
Phone: 915-685-5717		Conditions of Approval: Attached <input checked="" type="checkbox"/> *	

ATTACHMENT C-101
OXY USA Inc.
OXY Magni State #1
SEC 17 T17S R27E
Eddy County, NM

PROPOSED TD: 9800' TVD

BOP PROGRAM: 0' - 400' None

400'-1800' 13-3/8" 5M blind and pipe rams with 5M annular preventer.

1800'-9800' 13-3/8" 5M blind and pipe rams with 5M annular preventer and rotating head below 8500'.

CASING: 13-3/8" 48# H40 ST&C casing @ 400'. 17-1/2" hole.

8-5/8" 24# K55 ST&C casing @ 1800'. ~~hole.~~ 12 1/4"

4-1/2" 11.6# N80 LT&C casing @ 9800'. 7-7/8" hole.

CEMENT: Surface - Circulate cement with 220sx 35:65 POZ/Class C with 6% gel + 2% CaCl₂ + 0.25 #/sx Cello-Seal and 200sx Class C with 2% CaCl₂.

Intermediate - Circulate cement with 315sx 35:65 POZ/Class C with 6% gel + ~~5% gel~~ + 0.25 #/sx Cello-Seal and 200sx Class C with 2% CaCl₂.

Production - Cement with 530sx Super C Modified cement with 0.5#/sx FL-25 + 0.2 #/sx CD-32 + 0.5 #/sx gilsonite and 75sx Class C with 2% CaCl₂.

Estimated top of cement is 6000'. Cement volumes may be adjusted to hole caliper.

MUD: 0 - 400' FW/Native Mud. Lime for pH control (9-10). Paper for seepage. Wt. 8.7-9.2ppg, vis 32-34sec.

400' - 1800' ~~FW/Native Mud~~ Caustic for pH control (10-10.5). Paper for seepage. Wt. 10-10.1ppg, vis 28-29sec.

1800' - 6300' Fresh water. Caustic for pH control (9-9.5). Paper for seepage. Wt. 8.4ppg, vis 28-29sec.

6300' - 9000' Cut brine. Caustic for pH control (10-10.5). Wt. 9.2-9.4ppg, vis 28-29sec.

9000' - 9800' Mud up with a XCD Polymer system Wt. 9-9.6ppg, vis 32-34sec WL 8cc.

*- No Salt to be used as accelerator

** - Fresh Water as circ. medium in Intermediate Hole

DISTRICT I
P.O. Box 1980, Hobbs, NM 88240

State of New Mexico
Energy, Minerals and Natural Resources Department

Form C-102
Revised February 10, 1994
Instruction on back
Submit to Appropriate District Office
State Lease - 4 Copies
Fee Lease - 3 Copies

DISTRICT II
P.O. Drawer DD, Artesia, NM 88210

OIL CONSERVATION DIVISION

DISTRICT III
1000 Rio Brazos Rd., Aztec, NM 87410

P.O. Box 2088
Santa Fe, New Mexico 87504-2088

☐ AMENDED REPORT

WELL LOCATION AND ACREAGE DEDICATION PLAT

API Number 30-015-	Pool Code 80400	Pool Name Undesignated Logan Draw Morrow
Property Code	Property Name OXY MAGNI STATE COM.	Well Number 1
OGRID No. 16696	Operator Name OXY USA INC.	Elevation 3402'

Surface Location

UL or lot No. K	Section 10	Township 17 S	Range 27 E	Lot Idn	Feet from the 1650	North/South line SOUTH	Feet from the 1980	East/West line WEST	County EDDY
--------------------	---------------	------------------	---------------	---------	-----------------------	---------------------------	-----------------------	------------------------	----------------

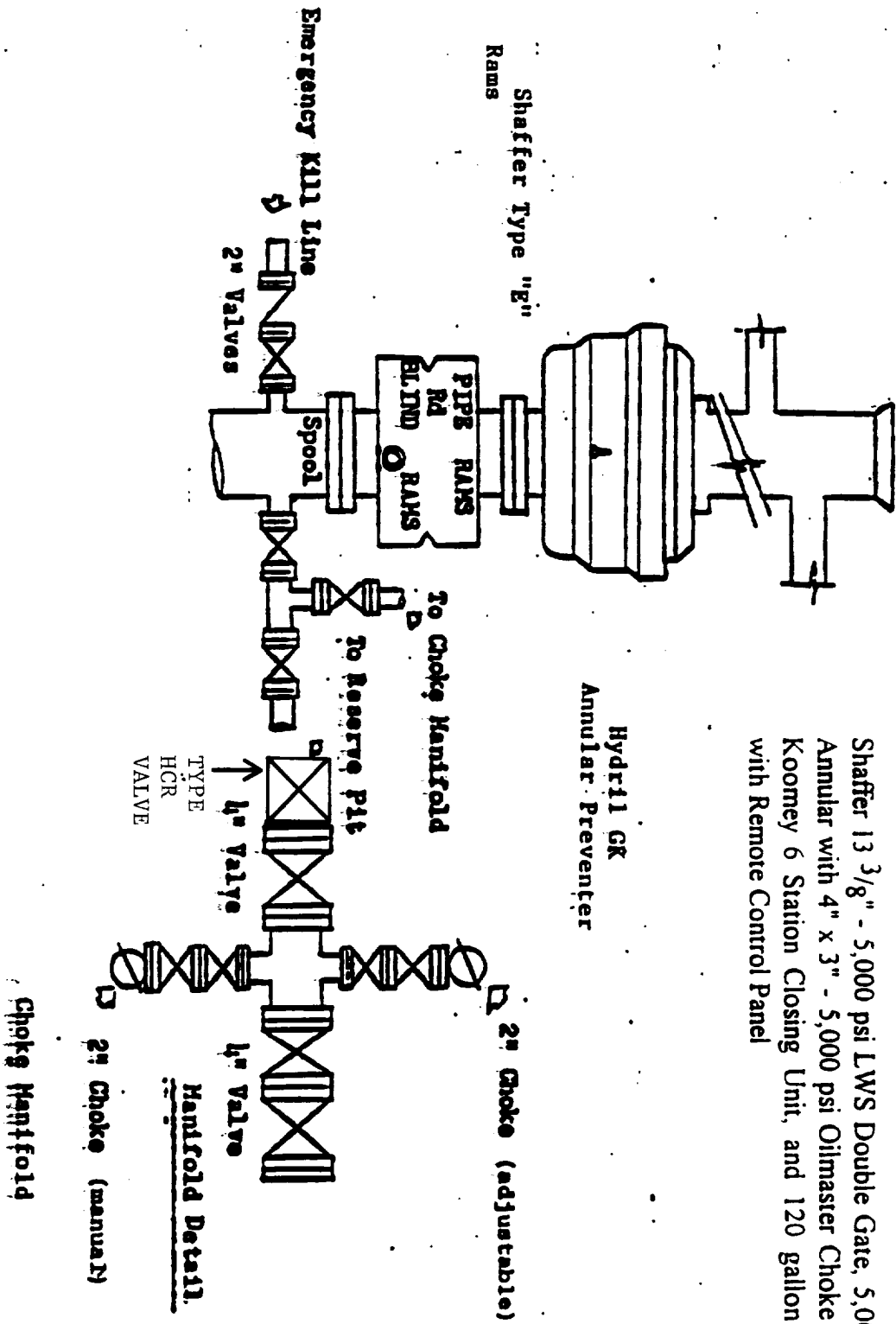
Bottom Hole Location If Different From Surface

UL or lot No.	Section	Township	Range	Lot Idn	Feet from the	North/South line	Feet from the	East/West line	County
Dedicated Acres 320	Joint or Infill N	Consolidation Code	Order No.						

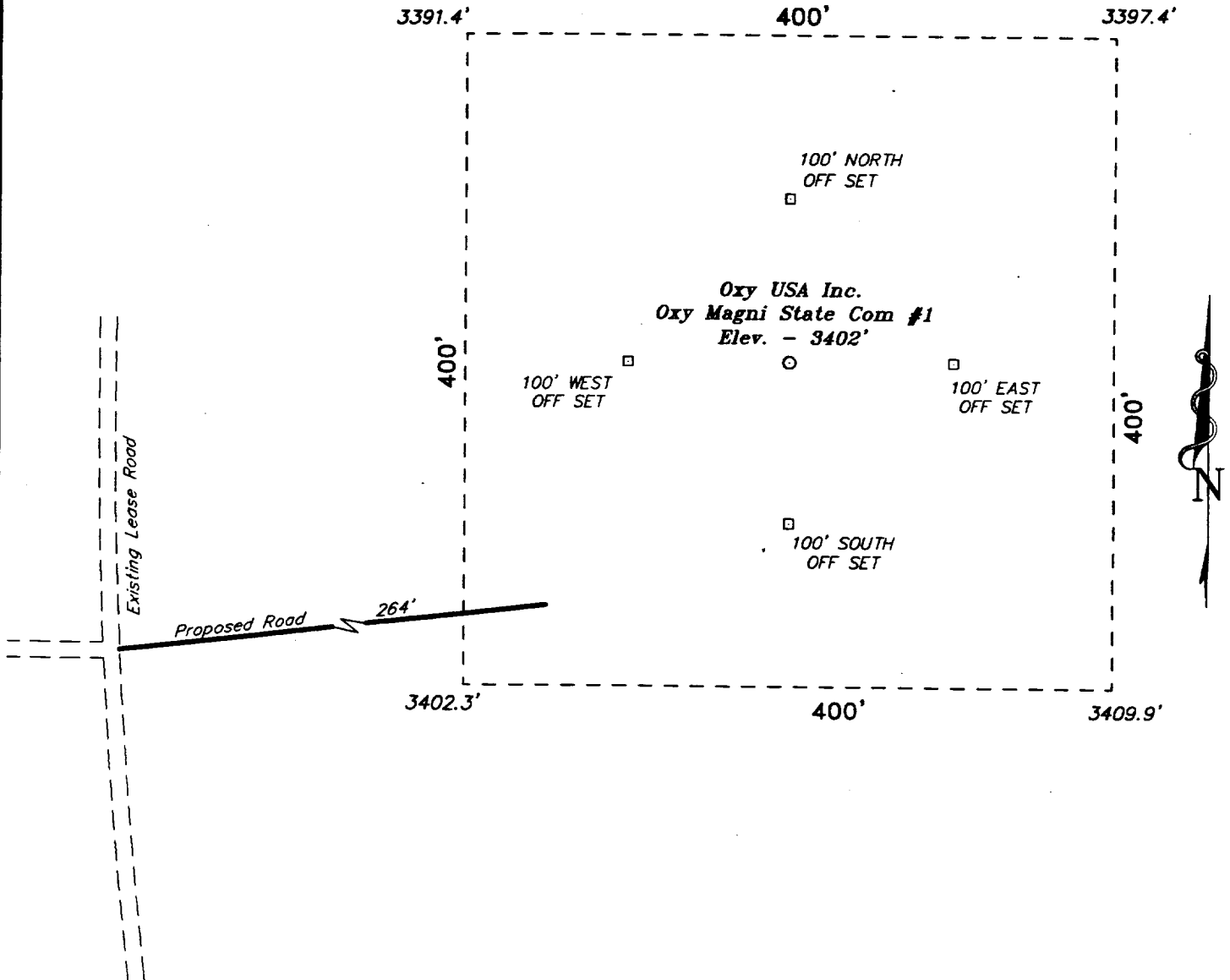
NO ALLOWABLE WILL BE ASSIGNED TO THIS COMPLETION UNTIL ALL INTERESTS HAVE BEEN CONSOLIDATED
OR A NON-STANDARD UNIT HAS BEEN APPROVED BY THE DIVISION

	OPERATOR CERTIFICATION I hereby certify the the information contained herein is true and complete to the best of my knowledge and belief. Signature David Stewart Printed Name Regulatory Analyst Title 8/7/98 Date
	SURVEYOR CERTIFICATION I hereby certify that the well location shown on this plat was plotted from field notes of actual surveys made by me or under my supervision, and that the same is true and correct to the best of my belief. July 6, 1998 Date Surveyed Signature & Seal of Professional Surveyor 7977 Certificate No. 80400 Jones 7977 BASIN SURVEYS

BLOWOUT PREVENTOR SCHEME



SECTION 10, TOWNSHIP 17 SOUTH, RANGE 27 EAST, N.M.P.M.,
EDDY COUNTY, NEW MEXICO.



Oxy USA Inc.

REF: Oxy Magni State Com #1 / Well Pad Topo

THE OXY MAGNI STATE COM No. 1 LOCATED 1650' FROM
THE SOUTH LINE AND 1980' FROM THE WEST LINE OF
SECTION 10, TOWNSHIP 17 SOUTH, RANGE 27 EAST,
N.M.P.M., EDDY COUNTY, NEW MEXICO.

BASIN SURVEYS P.O. BOX 1786 - HOBBS, NEW MEXICO

W.O. Number: 8307 Drawn By: K. GOAD

Date: 07-08-98 Disk: KJG #115 - 8307B.DWG

Survey Date: 07-06-98

Sheet 1 of 1 Sheets

