

UNITED STATES
DEPARTMENT OF THE INTERIOR
BUREAU OF LAND MANAGEMENT

SUBMIT IN TRIPLICATE*
(Other instructions on
reverse side)

FORM APPROVED
OMB NO. 1004-0136
Expires: February 28, 1995

APPLICATION FOR PERMIT TO DRILL OR DEEPEN

1a. TYPE OF WORK

DRILL ☐

DEEPEN ☐

RE-ENTRY

b. TYPE OF WELL

OIL
WELL ☒

GAS
WELL ☐

OTHER Disposal

SINGLE
ZONE ☐

MULTIPLE
ZONE ☐

2. NAME OF OPERATOR

SDX Resources, Inc.

3. ADDRESS AND TELEPHONE NO.

PO Box 5061, Midland, TX 79704 915/685-1761

4. LOCATION OF WELL (Report location clearly and in accordance with any State requirements.)

At surface 660' FNL, 1650' FEL, Unit B, NWNE

At proposed prod. zone

Same

14. DISTANCE IN MILES AND DIRECTION FROM NEAREST TOWN OR POST OFFICE*

6 miles SE of Artesia, NM

15. DISTANCE FROM PROPOSED*
LOCATION TO NEAREST
PROPERTY OR LEASE LINE, FT
(Also to nearest drig. unit line, if any)

660'
(600')

16. NO. OF ACRES IN LEASE

320

17. NO. OF ACRES ASSIGNED
TO THIS WELL

0

18. DISTANCE FROM PROPOSED LOCATION*
TO NEAREST WELL, DRILLING, COMPLETED,
OR APPLIED FOR, ON THIS LEASE, FT.

NA

19. PROPOSED DEPTH

8938

20. ROTARY OR CABLE TOOLS

21. ELEVATIONS (Show whether DF, RT, GR, etc.)

3495' G-R

22. APPROX. DATE WORK WILL START*

07/01/00

23.

PROPOSED CASING AND CEMENTING PROGRAM

SIZE OF HOLE	GRADE, SIZE OF CASING	WEIGHT PER FOOT	SETTING DEPTH	QUANTITY OF CEMENT
Existing 17-1/2"	13-3/8", H40	48#	400'	463 sx, Circ
Existing 11"	8-5/8", K55	32#	1800'	675 sx, Circ
Proposed 7-7/8"	5-1/2", J55	17#	7850'	1000 sx Circ

Propose to drill out plugs to 8938' & run 5-1/2" csg to 7850' w/packer shoe & 2 stage cmt to surface.

Drill out pkr shoe & clean out open hole to 8938'.

Treat as necessary & run 2-7/8" PC tbg w/PC pkr & set @ 7750'.

Will complete as a disposal well in the OH interval from 7750' - 8938'.

APPROVAL SUBJECT TO
GENERAL REQUIREMENTS
SPECIAL STIPULATIONS
ATTACHED



IN ABOVE SPACE DESCRIBE PROGRAM: If proposal is to deepen, give data on present productive zone and proposed new productive zone. If proposal is to drill or deepen directionally, give pertinent data on subsurface locations and measured and true vertical depths. Give blowout preventer program, if any.

24.

SIGNED

Chris Meyer

TITLE Engineer

DATE 03/27/00

(This space for Federal or State office use)

PERMIT NO.

APPROVAL DATE

Application approval does not warrant or certify that the applicant holds legal or equitable title to those rights in the subject lease which would entitle the applicant to conduct operations thereon.
CONDITIONS OF APPROVAL, IF ANY:

GLADYS D. DRAV

Assistant Field Manager,
Lands And Minerals

APPROVED BY

TITLE

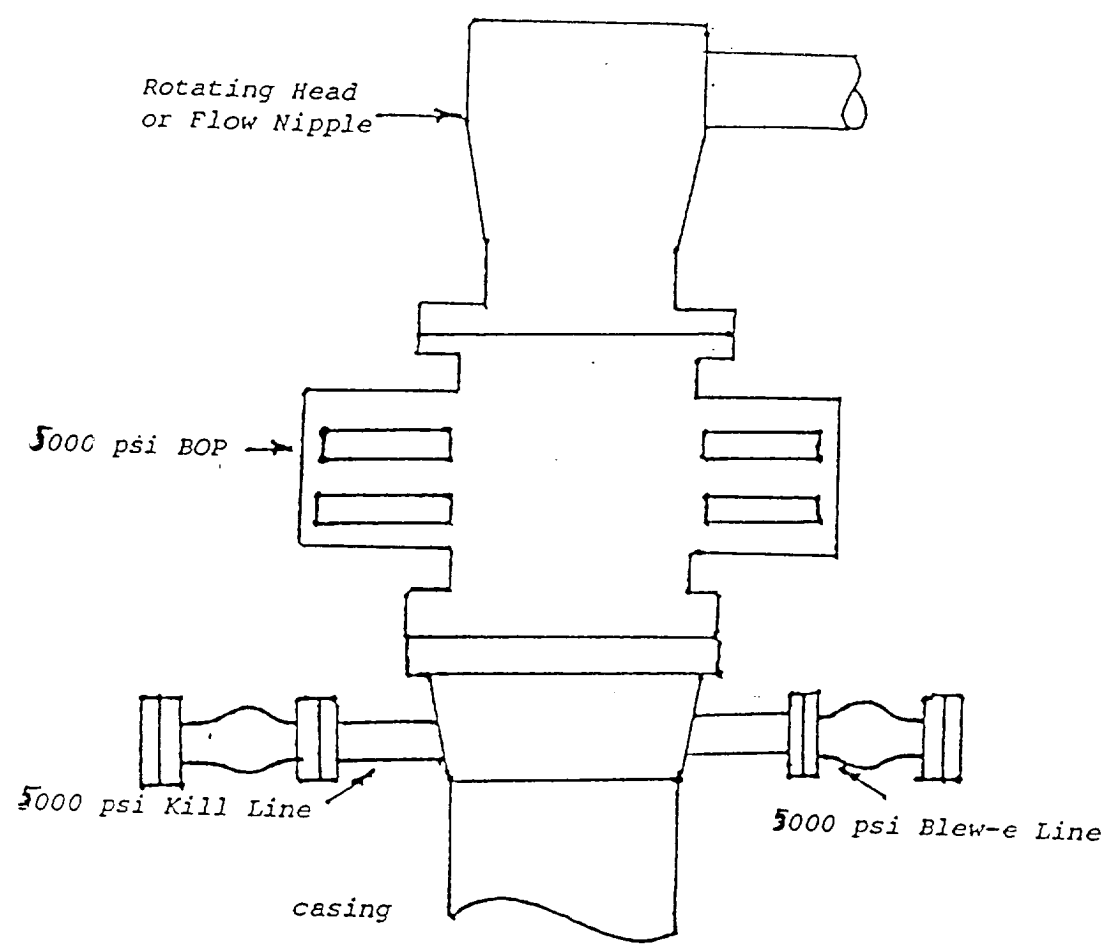
DATE

MAY 2000

*See Instructions On Reverse Side

Title 18 U.S.C. Section 1001, makes it a crime for any person knowingly and willfully to make to any department or agency of the United States any false, fictitious or fraudulent statements or representations as to any matter within its jurisdiction.

Blow Out Preventor Schematic



SDX RESOURCES, INC.

Lease: Woden Fed Well: 1

DISTRICT I
Box 1980, Hobbs, NM 88240

State of New Mexico
Energy, Minerals and Natural Resources Department

Form C-102
Revised February 10, 1994
Instruction on back
Submit to Appropriate District Office
State Lease - 4 Copies
Fee Lease - 3 Copies

DISTRICT II
P.O. Drawer DD, Artesia, NM 88210

DISTRICT III
1000 Rio Brazos Rd., Aztec, NM 87410

OIL CONSERVATION DIVISION

P.O. Box 2088
Santa Fe, New Mexico 87504-2088

☐ AMENDED REPORT

WELL LOCATION AND ACREAGE DEDICATION PLAT

API Number 30-015-30386	Pool Code 80400	Pool Name Undesignated Logan Draw Morrow
Property Code	Property Name OXY WODEN FEDERAL	Well Number 1
OGRD No. 16696	Operator Name OXY USA INC.	Elevation 3495'

Surface Location

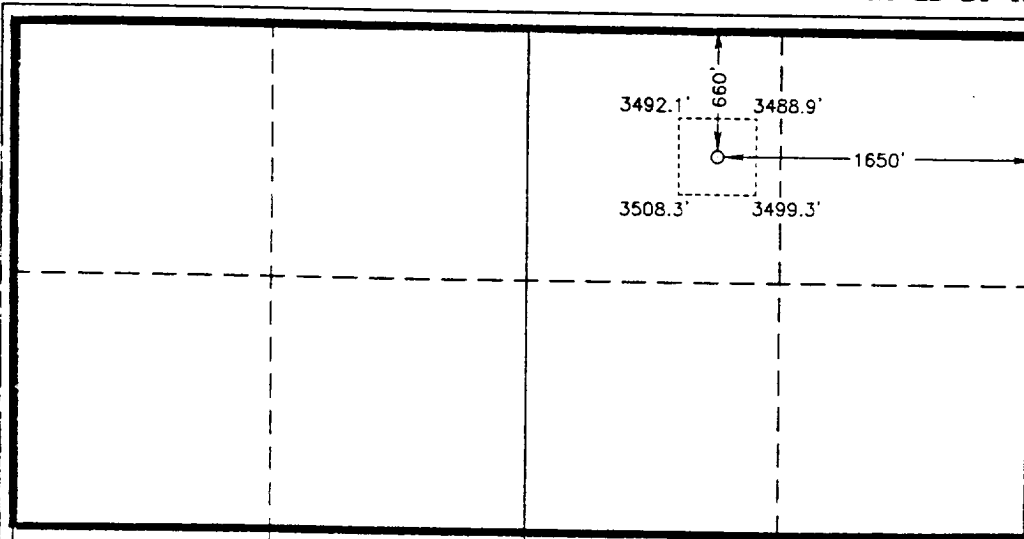
UL or lot No.	Section	Township	Range	Lot Idn	Feet from the	North/South line	Feet from the	East/West line	County
B	23	17 S	27 E		660	NORTH	1650	EAST	EDDY

Bottom Hole Location If Different From Surface

UL or lot No.	Section	Township	Range	Lot Idn	Feet from the	North/South line	Feet from the	East/West line	County

Dedicated Acres 320	Joint or Infill N	Consolidation Code	Order No.
------------------------	----------------------	--------------------	-----------

NO ALLOWABLE WILL BE ASSIGNED TO THIS COMPLETION UNTIL ALL INTERESTS HAVE BEEN CONSOLIDATED
OR A NON-STANDARD UNIT HAS BEEN APPROVED BY THE DIVISION



OPERATOR CERTIFICATION

I hereby certify the the information
contained herein is true and complete to the
best of my knowledge and belief.

David Stewart
Signature
David Stewart
Printed Name
Regulatory Analyst
Title
7/23/98
Date

SURVEYOR CERTIFICATION

I hereby certify that the well location shown
on this plat was plotted from field notes of
actual surveys made by me or under my
supervision, and that the same is true and
correct to the best of my belief.

January 20, 1998
Date Surveyed
JONES
Signature & Seal of
Professional Surveyor
7977
W.O. No. 8925a
Certificate No. GARY JONES 7977
WESSIGNA
BASIN SURVEYS

Exhibit 2A

District I
PO Box 1980, Hobbs, NM 88241-1980
District II
PO Drawer DD, Artesia, NM 88211-0719
District III
1000 Rio Brazos Rd., Aztec, NM 87410
District IV
PO Box 2088, Santa Fe, NM 87504-2088

State of New Mexico
Energy, Minerals & Natural Resources Department

OIL CONSERVATION DIVISION
PO Box 2088
Santa Fe, NM 87504-2088

Form C-102
Revised February 21, 1994
Instructions on back
Submit to Appropriate District Office
State Lease - 4 Copies
Fee Lease - 3 Copies

☐ AMENDED REPORT

WELL LOCATION AND ACREAGE DEDICATION PLAT

¹ API Number 30-015-30386	¹ Pool Code 80400	¹ Pool Name Undesignated Logan Draw Morrow
⁴ Property Code	⁴ Property Name Woden Federal	⁶ Well Number 1
⁷ OGRID No. 020451	⁴ Operator Name SDX Resources, Inc.	⁸ Elevation 3495'

¹⁰ Surface Location

UL or lot no.	Section	Township	Range	Lot Idn	Feet from the	North/South line	Feet from the	East/West line	County
---------------	---------	----------	-------	---------	---------------	------------------	---------------	----------------	--------

¹¹ Bottom Hole Location If Different From Surface

UL or lot no.	Section	Township	Range	Lot Idn	Feet from the	North/South line	Feet from the	East/West line	County
---------------	---------	----------	-------	---------	---------------	------------------	---------------	----------------	--------

¹² Dedicated Acres 40	¹³ Joint or Infill	¹⁴ Consolidation Code	¹⁵ Order No.
-------------------------------------	-------------------------------	----------------------------------	-------------------------

NO ALLOWABLE WILL BE ASSIGNED TO THIS COMPLETION UNTIL ALL INTERESTS HAVE BEEN CONSOLIDATED
OR A NON-STANDARD UNIT HAS BEEN APPROVED BY THE DIVISION

¹⁶									
<div><p>¹⁷ OPERATOR CERTIFICATION</p><p>I hereby certify that the information contained herein is true and complete to the best of my knowledge and belief</p><p><i>Chuck Morgan</i> Signature Chuck Morgan Printed Name Engineer Title 3/27/00 Date</p></div> <div><p>¹⁸ SURVEYOR CERTIFICATION</p><p>I hereby certify that the well location shown on this plat was plotted from field notes of actual surveys made by me or under my supervision, and that the same is true and correct to the best of my belief.</p><p>Date of Survey Signature and Seal of Professional Surveyer: Certificate Number</p></div>									

Exhibit 2B