

UNITED STATES DEPARTMENT OF THE INTERIOR  
BUREAU OF LAND MANAGEMENT  
N.M. Oil Conservation Division  
8175 1st St.  
ARTESIA, NM 86210-2834

Form approved.

c/55

APPLICATION FOR PERMIT TO DRILL OR DEEPEN

1a. TYPE OF WORK: DRILL ☒ DEEPEN ☐

b. TYPE OF WELL:

OIL WELL ☒ GAS WELL ☐ Other ☐ SINGLE ZONE ☐ MULTIPLE ZONE ☐

2. NAME OF OPERATOR

DEVON ENERGY CORPORATION (NEVADA)

6137

3. ADDRESS AND TELEPHONE NO.

20 N. BROADWAY, SUITE 1500, OKC, OK 73102 (405) 552-4511

4. LOCATION OF WELL (Report location clearly and in accordance with any State requirements)\*

At surface 2210' FSL & 1650' FEL, Unit "J"

At top proposed prod. zone (SAME)

14. DISTANCE IN MILES AND DIRECTION FROM NEAREST TOWN OR POST OFFICE\*

Approximately 7 miles southeast of Artesia, NM

15. DISTANCE FROM PROPOSED LOCATION TO NEAREST PROPERTY OR LEASE LINE, FT.

1650'

16. NO. OF ACRES IN LEASE

160

18. DISTANCE FROM PROPOSED LOCATION\* TO NEAREST WELL, DRILLING, COMPLETED, OR APPLIED FOR, ON THIS LEASE, FT.

750'

19. PROPOSED DEPTH

3400'

21. ELEVATIONS (Show whether DF, RT, GR, etc.)

GR 3650'

5. LEASE DESIGNATION AND SERIAL NO.  
LC-057798

6. IF INDIAN, ALLOTTEE OR TRIBE NAME  
NA

7. UNIT AGREEMENT NAME

8. FARM OR LEASE NAME, WELL NO.

Logan 35 Federal #3

23714

9. API WELL NO.

30-015-

30408

10. FIELD AND POOL, OR WILDCAT

Red Lake; Q-GB-SA

S1300

11. SEC., T., R., M., OR BLOCK AND SURVEY OR AREA  
Section 35-T17S-27E

12. COUNTY OR PARISH

Eddy County

13. STATE

New Mexico

17. NO. OF ACRES ASSIGNED TO THIS WELL

40

20. ROTARY OR CABLE TOOLS\*

Rotary

22. APPROX. DATE WORK WILL START\*

October 15, 1998

23. PROPOSED CASING AND CEMENTING PROGRAM

SIZE OF HOLE	GRADE, SIZE OF CASING	WEIGHT PER FOOT	SETTING DEPTH	QUANTITY OF CEMENT
17 1/2"	14"	Conductor	40'	Redimix
12 1/4"	8 5/8", J-55	24 ppf	1150'	350 sx Lite + 200 sx Class C
7 7/8"	5 1/2", J-55	15.5 ppf	3400'	250 sx Lite + 350 sx Class C

\* Cement will be circulated to surface on all casing strings.

ROSWELL CONTROLLED WATER BASIN

Devon Energy plans to drill to 3400' +/- to test the San Andres Formation for commercial quantities of oil. If the San Andres is deemed non-commercial, the wellbore will be plugged and abandoned per Federal regulations. Programs to adhere to onshore oil and gas regulations are outlined in the following exhibits and attachments.

Drilling Program

Surface Use and Operating Plan

Exhibit #1 - Blowout Prevention Equipment/

Choke Manifold

Exhibit #2 - Location and Elevation Plat

Exhibit #3 - Planned Access Roads

Exhibit #4 - Wells Within a One Mile Radius

Exhibit #5 - Production Facilities Plan

Exhibit #6 - Rotary Rig Layout

Exhibit #7 - Casing Design Parameters and Factors

Exhibit #8 - H<sub>2</sub>S Operating Plan

The undersigned accepts all applicable terms, conditions, stipulation, and restrictions concerning operations conducted on the leased land or portion thereof, as described above.

Bond Coverage: Nationwide

BLM Bond File No.: CO-1104

Post FD-1  
9-25-98  
API & Loc

APPROVAL SUBJECT TO  
GENERAL REQUIREMENTS AND  
SPECIAL STIPULATIONS  
ATTACHED

IN ABOVE SPACE DESCRIBE PROPOSED PROGRAM: If proposal is to deepen, give data on present productive zone and proposed new productive zone. If proposal is to drill or deepen directionally, give pertinent data on subsurface locations and measured and true vertical depths. Give blowout preventer program, if any.

24.

SIGNED E. L. Buttross, Jr.

TITLE E. L. BUTTROSS, JR.  
DISTRICT ENGINEER

DATE 8/21/98

\*(This space for Federal or State office use)

PERMIT NO. \_\_\_\_\_

APPROVAL DATE \_\_\_\_\_

Application approval does not warrant or certify that the applicant holds legal or equitable title to those rights in the subject lease which would entitle the applicant to conduct operations thereon.

CONDITIONS OF APPROVAL, IF ANY:

Acting  
Assistant Field Office Manager,  
Lands and Minerals

APPROVED BY (ORIG. SGD.) ARMANDO A. LOPEZ

TITLE \_\_\_\_\_

DATE SEP 8 1998

See Instructions On Reverse Side

DISTRICT I  
P.O. Box 1980, Hobbs, NM 88240

State of New Mexico  
Energy, Minerals and Natural Resources Department

Form C-102  
Revised February 10, 1994  
Instruction on back  
Submit to Appropriate District Office  
State Lease - 4 Copies  
Fee Lease - 3 Copies

DISTRICT II  
P.O. Drawer DD, Artesia, NM 88210

DISTRICT III  
1000 Rio Brazos Rd., Aztec, NM 87410

OIL CONSERVATION DIVISION  
P.O. Box 2088  
Santa Fe, New Mexico 87504-2088

☐ AMENDED REPORT

WELL LOCATION AND ACREAGE DEDICATION PLAT

API Number	Pool Code 51300	Pool Name Red Lake (Q-GB-SA)
Property Code	Property Name LOGAN "35" FEDERAL	Well Number 3
OGRID No. 6137	Operator Name DEVON ENERGY CORP.	Elevation 3650'

Surface Location

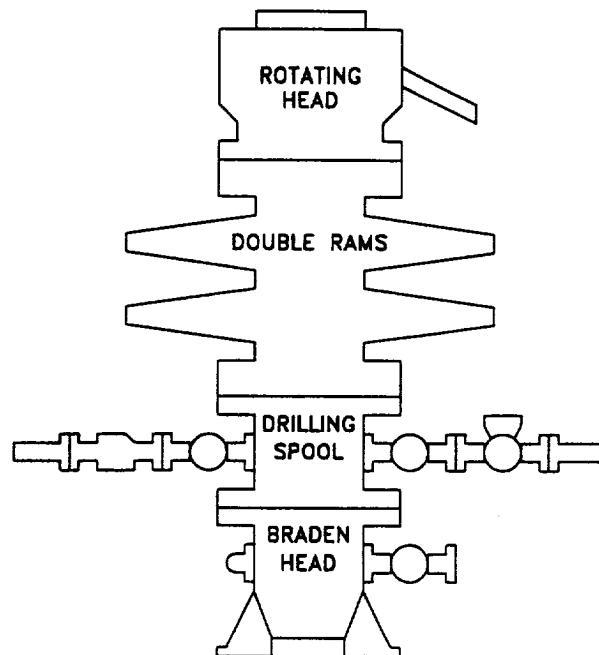
UL or lot No.	Section	Township	Range	Lot Idn	Feet from the	North/South line	Feet from the	East/West line	County
J	35	17 S	27 E		2210	SOUTH	1650	EAST	EDDY

Bottom Hole Location If Different From Surface

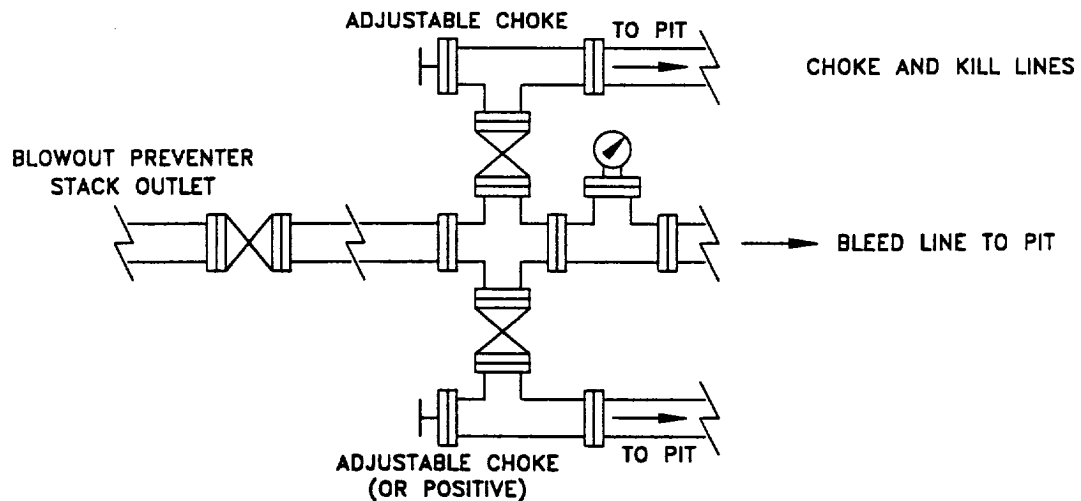
UL or lot No.	Section	Township	Range	Lot Idn	Feet from the	North/South line	Feet from the	East/West line	County
Dedicated Acres	Joint or Infill	Consolidation Code	Order No.						

NO ALLOWABLE WILL BE ASSIGNED TO THIS COMPLETION UNTIL ALL INTERESTS HAVE BEEN CONSOLIDATED  
OR A NON-STANDARD UNIT HAS BEEN APPROVED BY THE DIVISION

	<p><b>OPERATOR CERTIFICATION</b></p> <p>I hereby certify the the information contained herein is true and complete to the best of my knowledge and belief.</p> <p><i>E.L. Buttross Jr.</i> Signature E.L. Buttross, Jr. Printed Name District Engineer Title 8/21/98 Date</p>
	<p><b>SURVEYOR CERTIFICATION</b></p> <p>I hereby certify that the well location shown on this plat was plotted from field notes of actual surveys made by me or under my supervision and that the same is true and correct to the best of my belief.</p> <p>July 24, 1998 Date Gregory L. Jones Signature Professional Surveyor 7977 Certificate No. 828 Basin Surveys</p>



## CHOKE MANIFOLD REQUIREMENT (2000 psi WP)



**devon**  
ENERGY SERVICES

**WEST RED LAKE AREA**  
EDDY COUNTY, NEW MEXICO

SCHEMATIC  
**BLOWOUT PREVENTOR**  
(2000 PSI MINIMUM WP)

Q:\PROJECTS\EXPANDED

WRLBOP

**Attachment to Exhibit #1**  
**NOTES REGARDING BLOWOUT PREVENTORS**  
**Logan 35 Federal #3**  
**Eddy County, New Mexico**

1. Drilling nipple will be constructed so it can be removed mechanically without the aid of a welder. The minimum internal diameter will equal BOP bore.
2. Wear ring will be properly installed in head.
3. Blowout preventor and all associated fittings will be in operable condition and tested to 1000 psi with the rig pump.
4. All fittings will be flanged.
5. A full bore safety valve with proper thread connections will be available on the rotary rig floor at all times.
6. All choke lines will be anchored to prevent movement.
7. All BOP equipment will be equal to or larger in bore than the internal diameter of the last casing string.
8. Will maintain a Kelly cock attached to the Kelly.
9. Hand wheels and wrenches will be properly installed and tested for safe operation.
10. All BOP equipment will meet API standards and include a minimum 40 gallon accumulator having two independent means of power to initiate closing operation.