

District I
PO Box 1980, Hobbs, NM 88241-1980
District II
PO Drawer DD, Artesia, NM 88211-0719
District III
1000 Rio Brazos Rd., Aztec, NM 87410
District IV
PO Box 2088, Santa Fe, NM 87504-2088

State of New Mexico
Energy, Minerals & Natural Resources Department

OIL CONSERVATION DIVISION
PO Box 2088
Santa Fe, NM 87504-2088

Form C-101
Revised February 10, 1994
Instructions on back
Submit to Appropriate District Office
State Lease - 6 Copies
Fee Lease - 5 Copies

☐ AMENDED REPORT

APPLICATION FOR PERMIT TO DRILL, RE-ENTER, DEEPEN, PLUGBACK, OR ADD A ZONE

Operator Name and Address: OXY USA Inc. P.O. Box 50250 Midland, TX 79710-0250		OGRID Number 16696
		API Number 30-015-30446
Property Code 23824	Property Name OXY Chopsticks State Com.	Well No. 1

7 Surface Location

UL or lot no.	Section	Township	Range	Lot Idn	Feet from the	North/South line	Feet from the	East/West line	County
F	24	17S	27E		1750	North	1980	West	Eddy

8 Proposed Bottom Hole Location If Different From Surface

UL or lot no.	Section	Township	Range	Lot Idn	Feet from the	North/South line	Feet from the	East/West line	County
Proposed Pool 1 Undesignated Logan Draw Morrow					Proposed Pool 2 80400				

Work Type Code N	Well Type Code G	Cable/Rotary R	Lease Type Code S B-8318-128	Ground Level Elevation 3483'
Multiple No	Proposed Depth 9800'	Formation Morrow	Contractor Peterson	Spud Date 9/20/98

21 Proposed Casing and Cement Program

Hole Size	Casing Size	Casing weight/foot	Setting Depth	Sacks of Cement	Estimated TOC
12-1/4"	8-5/8"	32#	1800'	775sx	Surface
7-7/8"	4-1/2"	11.6#	9800'	730sx	6000'-EST

Describe the proposed program. If this application is to DEEPEN or PLUG BACK give the data on the present productive zone and proposed new productive zone. Describe the blowout prevention program, if any. Use additional sheets if necessary.

Notify N.M.O.C.C. in sufficient
time to witness cementing
the 8 5/8" casing

SEE OTHER SIDE



I hereby certify that the information given above is true and complete to the best of my knowledge and belief.

Signature:

David Stewart

Printed name:

David Stewart

Title:

Regulatory Analyst

Date:

10/15/98

Phone:

915-685-5717

OIL CONSERVATION DIVISION

Approved by:

ORIGINAL SIGNED BY TIM W. GUM
DISTRICT II SUPERVISOR

Title:

Approval Date:

10-16-98

Expiration Date:

10-16-99

Conditions of Approval:

Attached ☐

ATTACHMENT C-101
OXY USA Inc.
OXY Chopstick State #1
SEC 24 T17S R27E
Eddy County, NM

PROPOSED TD: 9800' TVD

BOP PROGRAM: 0' - 1800' 20" X 40' Conductor pipe with 13-3/8" rotating head bolted on. To be used as diverter only.

1800'-9800' 8-5/8" 5M blind and pipe rams with 5M annular preventer and rotating head below 6000'.

CASING: 8-5/8" 32# K55 ST&C casing @ 1800'. 12-1/4" hole.

4-1/2" 11.6# N80 LT&C casing @ 9800'. 7-7/8" hole.

CEMENT: Surface - Circulate cement with 475sx 35:65 POZ/C with 6% Bentonite + .005% Static Free + .005gps FP-6L + 2% CaCl₂ + 0.25#/sx Cello Flake + 5#/sx Gilsonite followed by 300sx Cl C with 2% CaCl₂ + .005#/sx Static Free + .005gps FP-6L.

Production - Cement with 655sx 15:61:11 POZ/C/CSE with .005#/sx Static Free + 8#/sx Gilsonite + .5% FL-25 + .5% FL-52 + .005gps FP-6L followed by 75sx Cl C with .005#/sx Static Free + .7% FL-25 + .005gps FP-6L.

Estimated top of cement is 6000'.

Cement volumes may be adjusted to hole caliper.

MUD: 0' - 1800' FW/gel/lime. Lime for pH control (9-10). Paper for seepage. Wt. 8.6-9.2ppg, vis 28-34sec.

1800'-6000' Fresh water. Caustic for pH control (9-9.5). Paper for seepage. Wt. 8.3-8.5ppg, vis 28-29sec

6000'-8700' Cut brine. Caustic for pH control (10-10.5). Wt. 9.8-10.0ppg, vis 28-29sec

8700'-9800' Mud up with a XCD Polymer system Wt. 9.6-10.0ppg, vis 42-48sec WL 8cc.

DISTRICT I
P.O. Box 1980, Hobbs, NM 88240

State of New Mexico
Energy, Minerals and Natural Resources Department

Form C-102
Revised February 10, 1994
Instruction on back
Submit to Appropriate District Office
State Lease - 4 Copies
Fee Lease - 3 Copies

DISTRICT II
P.O. Drawer DD, Artesia, NM 88210

OIL CONSERVATION DIVISION

DISTRICT III
1000 Rio Brazos Rd., Artesia, NM 87410

P.O. Box 2088
Santa Fe, New Mexico 87504-2088

☐ AMENDED REPORT

WELL LOCATION AND ACREAGE DEDICATION PLAT

API Number 30-015-	Pool Code 80400	Pool Name Undesignated Logan Draw Morrow
Property Code	Property Name OXY Chopsticks STATE	Well Number 1
OGRID No. 16696	Operator Name Oxy USA Inc.	Elevation 3483'

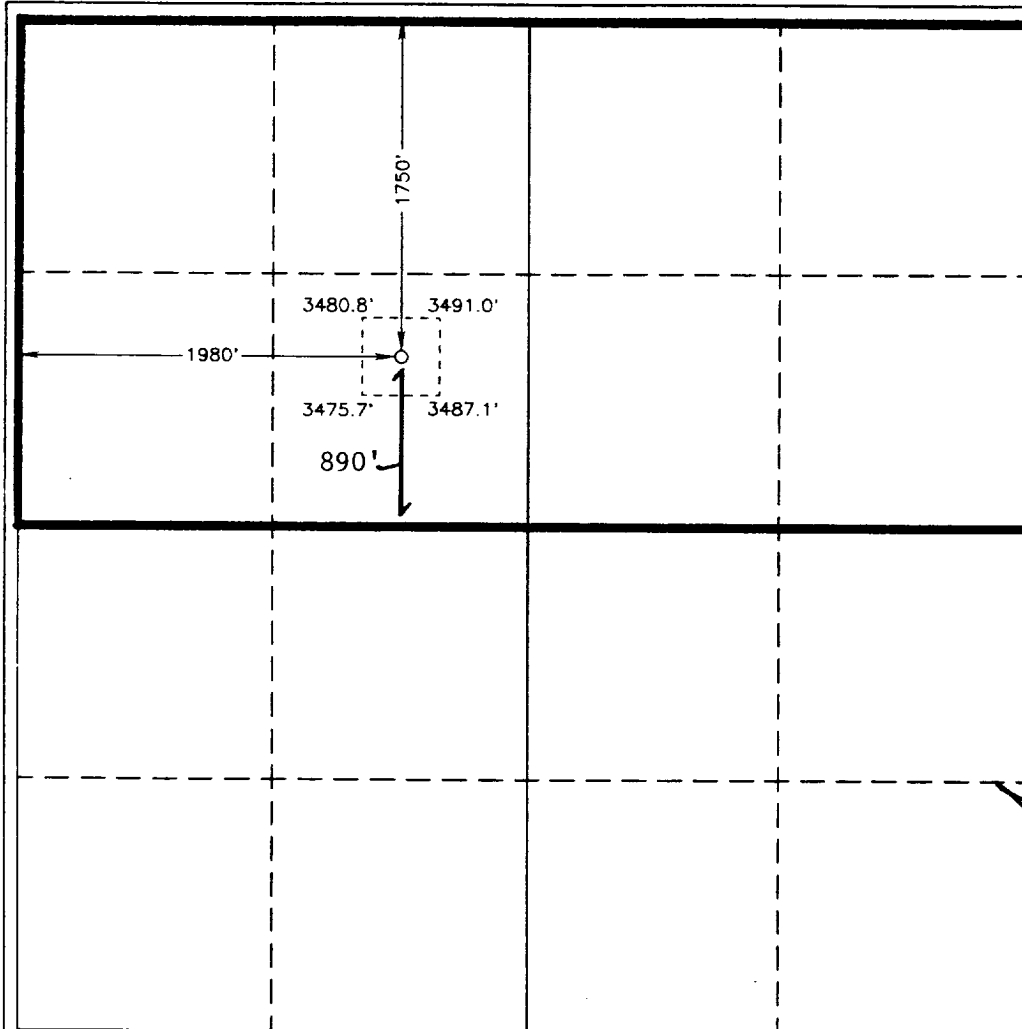
Surface Location

UL or lot No. F	Section 24	Township 17 S	Range 27 E	Lot Idn	Feet from the 1750	North/South line North	Feet from the 1980	East/West line West	County Eddy
--------------------	---------------	------------------	---------------	---------	-----------------------	---------------------------	-----------------------	------------------------	----------------

Bottom Hole Location If Different From Surface

UL or lot No.	Section	Township	Range	Lot Idn	Feet from the	North/South line	Feet from the	East/West line	County
Dedicated Acres 320	Joint or Infill N	Consolidation Code	Order No.						

NO ALLOWABLE WILL BE ASSIGNED TO THIS COMPLETION UNTIL ALL INTERESTS HAVE BEEN CONSOLIDATED
OR A NON-STANDARD UNIT HAS BEEN APPROVED BY THE DIVISION



OPERATOR CERTIFICATION

I hereby certify the the information
contained herein is true and complete to the
best of my knowledge and belief.

David Stewart
Signature

David Stewart
Printed Name

Regulatory Analyst
Title

10/15/98
Date

SURVEYOR CERTIFICATION

I hereby certify that the well location shown
on this plat was plotted from field notes of
actual surveys made by me or under my
supervision, and that the same is true and
correct to the best of my belief.

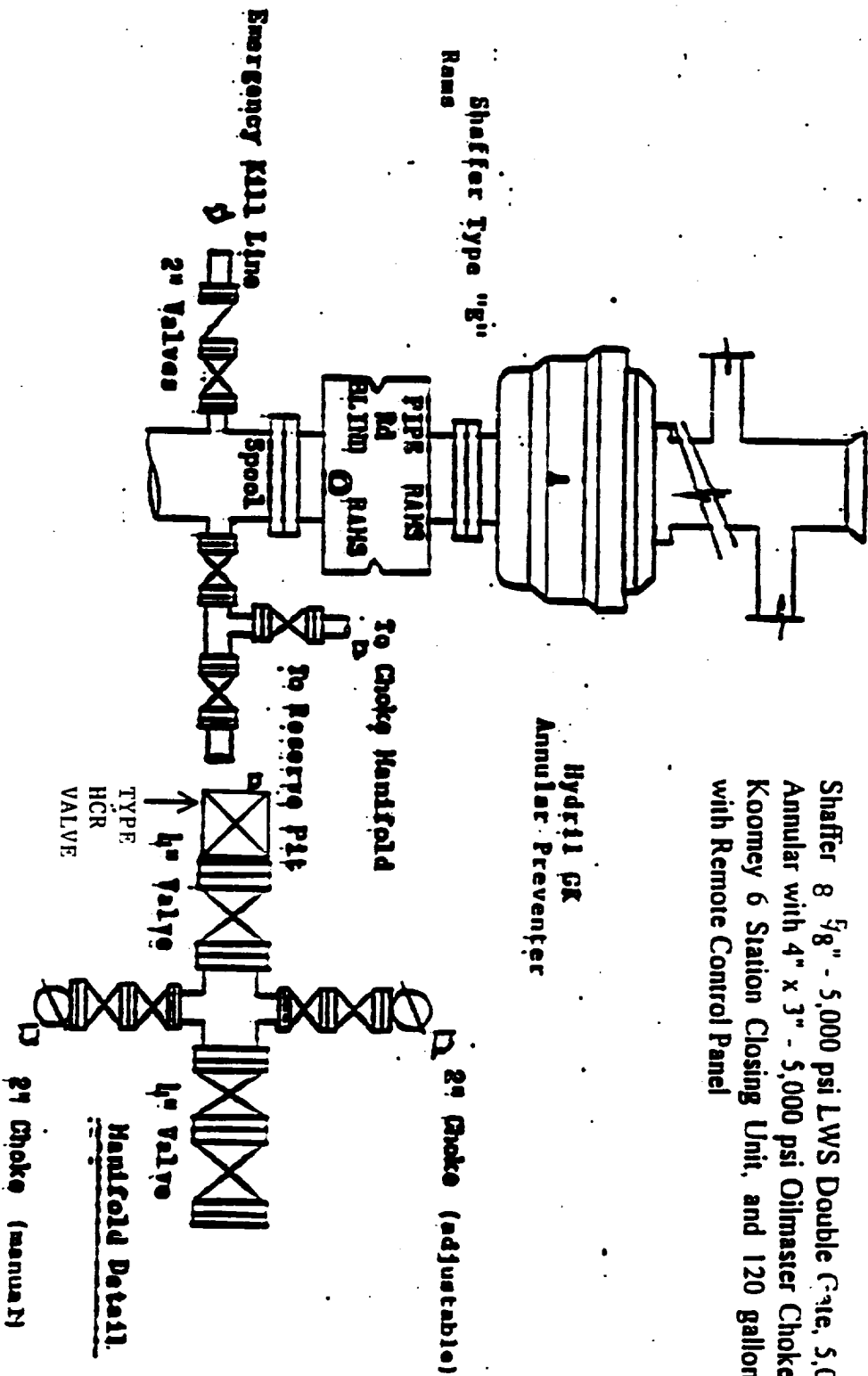
July 2, 1998

Date Surveyed
Signature & Seal of
Professional Surveyor

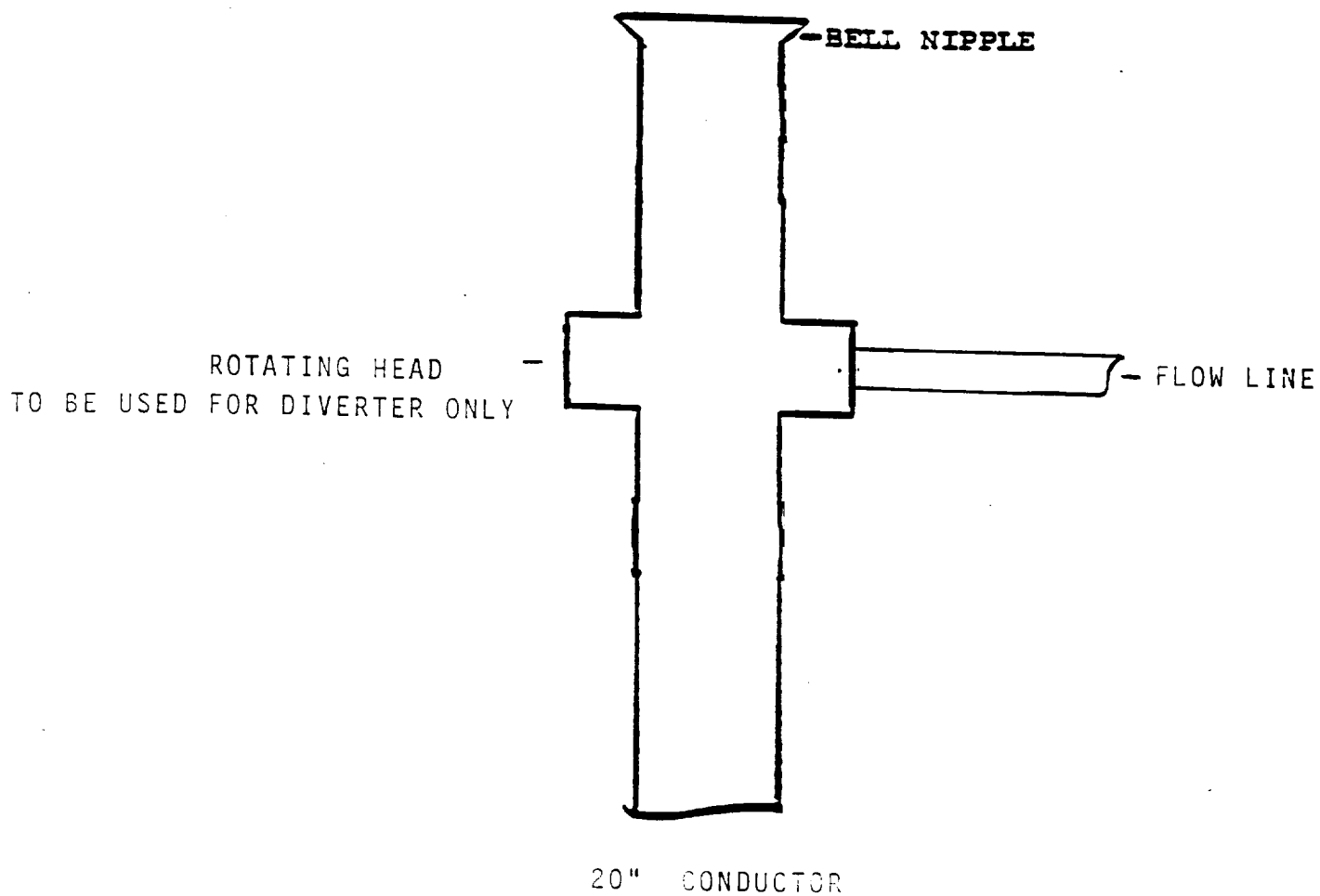
GARY L. JONES
7977
W.O. No. 8369
Certificate No. Gary Jones 7977
PROFESSIONAL SURVEYOR
DRAIN SURVEYS

BLOWOUT PREVENTOR SCHEMATIC

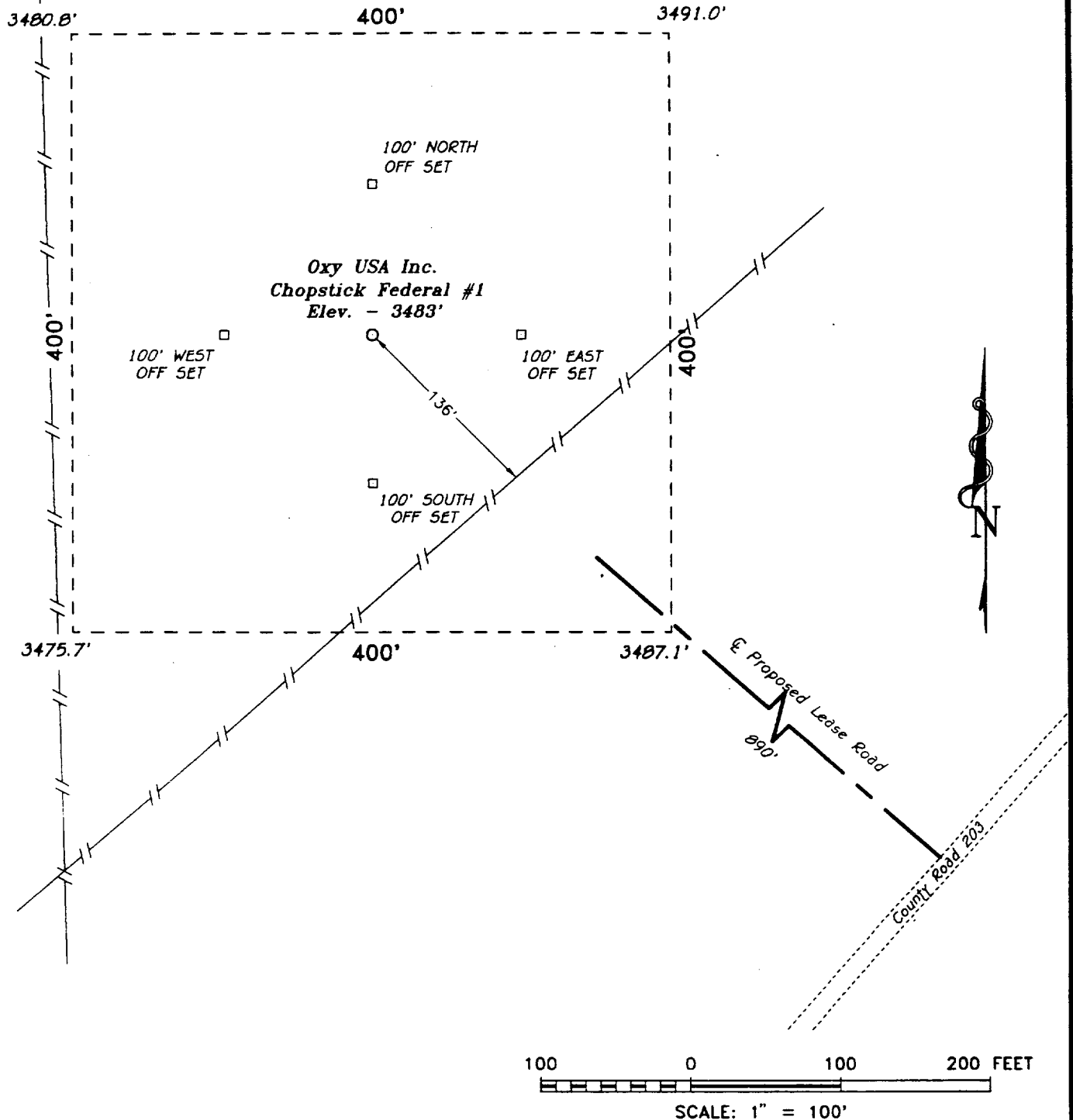
EXHIBIT A



Shaffer 8 5/8" - 5,000 psi LWS Double Gate, 5,000 psi Shaffer Annular with 4" x 3" - 5,000 psi Oilmaster Choke Manifold and Koomsey 6 Station Closing Unit, and 120 gallon Accumulator with Remote Control Panel



SECTION 24, TOWNSHIP 17 SOUTH, RANGE 27 EAST, N.M.P.M.,
EDDY COUNTY, NEW MEXICO.



Oxy USA Inc.

REF: Chopstick Federal No. 1 / Well Pad Topo

THE CHOPSTICK FEDERAL No. 1 LOCATED 1750' FROM
THE NORTH LINE AND 1980' FROM THE WEST LINE OF
SECTION 24, TOWNSHIP 17 SOUTH, RANGE 27 EAST,
N.M.P.M., EDDY COUNTY, NEW MEXICO.

BASIN SURVEYS P.O. BOX 1786-HOBBS, NEW MEXICO

W.O. Number: 8301

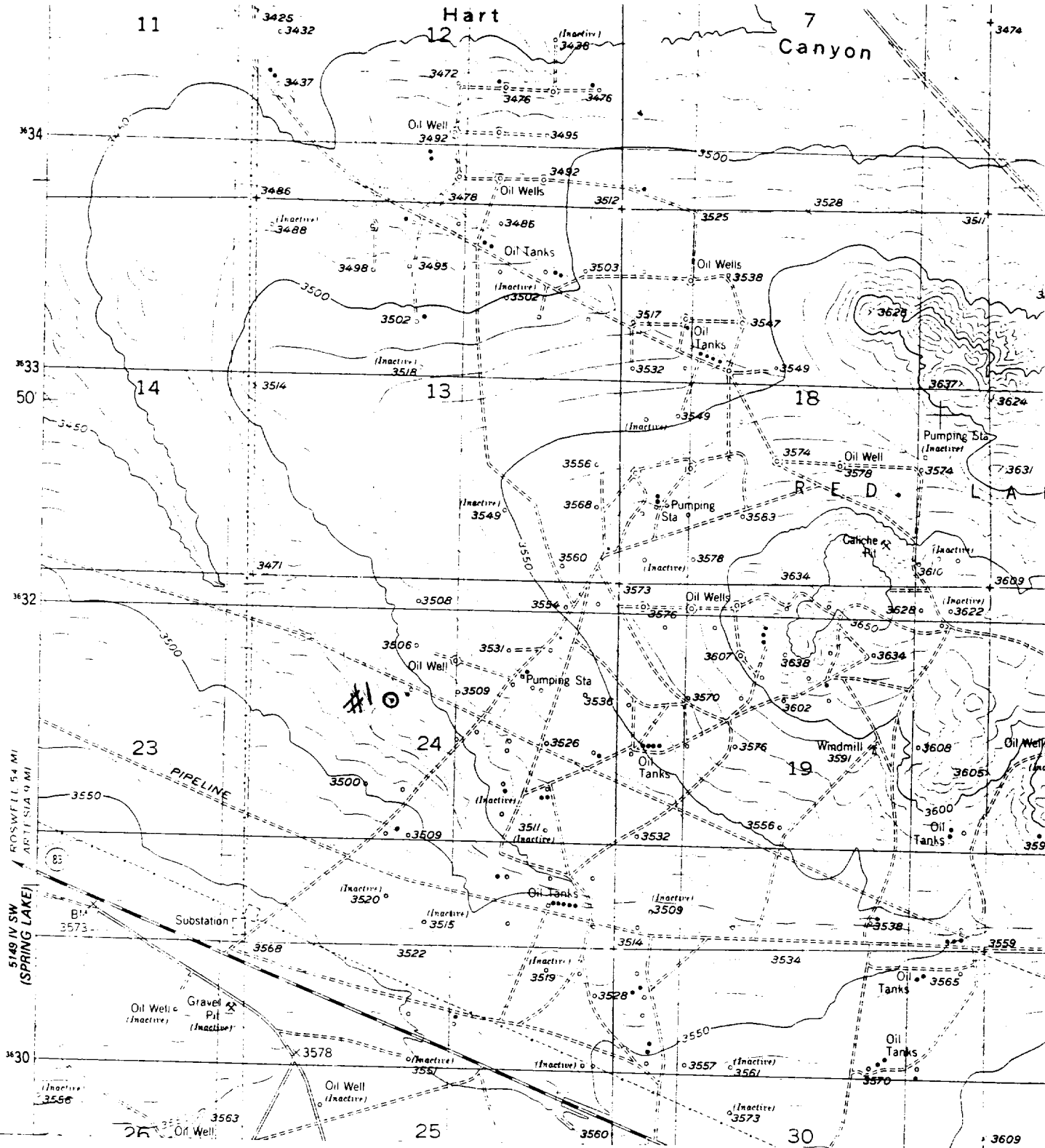
Drawn By: S.C. NICHOLS

Date: 07-07-98

Disk: SCN #49 - 8301AA.DWG

Survey Date: 07-02-98

Sheet 1 of 1 Sheets



Oxy USA Inc.
 Chopstick Federal No. 1
 1750' FNL & 1980' FWL
 Sec. 24, T-17-S, R-27-E,
 Eddy County, New Mexico.

SCALE: 1"=2000'

BASIN SURVEYS

P.O. BOX 1786-HOBBS, NEW MEXICO

2000' 0 2000' 4000 Feet

W.O. Number: 8701