

District I  
PO Box 1980, Hobbs, NM 88241-1980

District II  
811 South First, Artesia, NM 88210

District III  
1000 Rio Brazos Rd., Aztec, NM 87410

District IV  
2040 South Pacheco, Santa Fe, NM 87505

State of New Mexico  
Energy, Minerals & Natural Resources Department

OIL CONSERVATION DIVISION

2040 South Pacheco  
Santa Fe, NM 87505

Form C-101  
Revised October 18, 1994  
Instructions on back  
Submit to Appropriate District Office  
State Lease - 6 Copies  
Fee Lease - 5 Copies

☐ AMENDED REPORT

APPLICATION FOR PERMIT TO DRILL, RE-ENTER, DEEPEN, PLUG BACK, OR ADD A ZONE

Operator Name and Address Nearburg Producing Company 3300 N A St., Bldg 2, Suite 120 Midland, TX 79705		OGRID Number 015742
		API Number 30-015-30567
Property Code 24239	Property Name Eagle Creek 11	Well No. 1

Surface Location

UL or lot no.	Section	Township	Range	Lot Idn	Feet from the	North/South line	Feet from the	East/West Line	County
C	14	17S	25E		1070	North	2110	West	Eddy

Proposed Bottom Hole Location If Different From Surface

UL or lot no.	Section	Township	Range	Lot Idn	Feet from the	North/South line	Feet from the	East/West Line	County
O	11	17S	25E		660	South	1980	East	Eddy

Proposed Pool 1 Eagle Creek, Morrow UNDERS.	Proposed Pool 2 Post FD-1 1-29-99 API + Loc
---	--

Work Type Code N	Well Type Code G	Cable/Rotary R	Lease Type Code P	Ground Level Elevation 3498
Multiple No	Proposed Depth 8100	Formation Morrow	Contractor Peterson	Spud Date 11-15-98

Proposed Casing and Cement Program

Hole Size	Casing Size	Casing weight/foot	Setting Depth	Sacks of Cement	Estimated TOC
17-1/2"	13-3/8"	48#	300'	500 sxs	Circ to surface
12-1/4"	8-5/8"	24#	1,200'	775 sxs	Circ to surface
7-7/8"	5-1/2"	17# & 20#	8,100'	2000 sxs	Circ to surface

<sup>22</sup>Describe the proposed program. If this application is to DEEPEN or PLUG BACK give the data on the present productive zone and proposed new productive zone. Describe the blowout prevention program, if any. Use additional sheets if necessary.

Propose to drill from 1,070' FNL & 2,100' FWL, Section 14-T17S-R25E to 660' FWL & 1,980' FEL, Section 11-T17S-R25E, Eddy County, New Mexico to sufficient depth to evaluate the Morrow formation. After reaching TD, logs will be run and casing set if the evaluation is positive. Perforate, test and stimulate as necessary to establish production.

Notify N.M.O.C.C. in sufficient  
time to witness cementing  
the 8 5/8" casing

<sup>23</sup> I hereby certify that the information given above is true and complete to the best of my knowledge and belief. Signature: <i>E. Scott Kimbrough</i> Printed name: E. Scott Kimbrough Title: Manager of Drilling and Production Date: 10-27-98 Phone: 915/686-8235		OIL CONSERVATION DIVISION Approved By: <i>Jim W. Brown</i> Title: District Supervisor Approval Date: 1-26-99 Expiration Date: 1-26-00 Conditions of Approval: Attached: <input type="checkbox"/>	
--	--	--	--

DISTRICT I  
P.O. Box 1980, Hobbs, NM 88241-1980

State of New Mexico  
Energy, Minerals and Natural Resources Department

Form C-102  
Revised February 10, 1994  
Submit to Appropriate District Office  
State Lease - 4 Copies  
Fee Lease - 3 Copies

DISTRICT II  
P.O. Drawer DD, Artesia, NM 88211-0719

DISTRICT III  
1000 Rio Brazos Rd., Aztec, NM 87410

DISTRICT IV  
P.O. BOX 2088, SANTA FE, N.M. 87604-2088

## OIL CONSERVATION DIVISION

P.O. Box 2088  
Santa Fe, New Mexico 87504-2088

☐ AMENDED REPORT

### WELL LOCATION AND ACREAGE DEDICATION PLAT

API Number	Pool Code	Pool Name Eagle Creek, Morrow
Property Code	Property Name EAGLE CREEK 11	Well Number 1
OGRID No. 015742	Operator Name NEARBURG PRODUCING COMPANY	Elevation 3498'

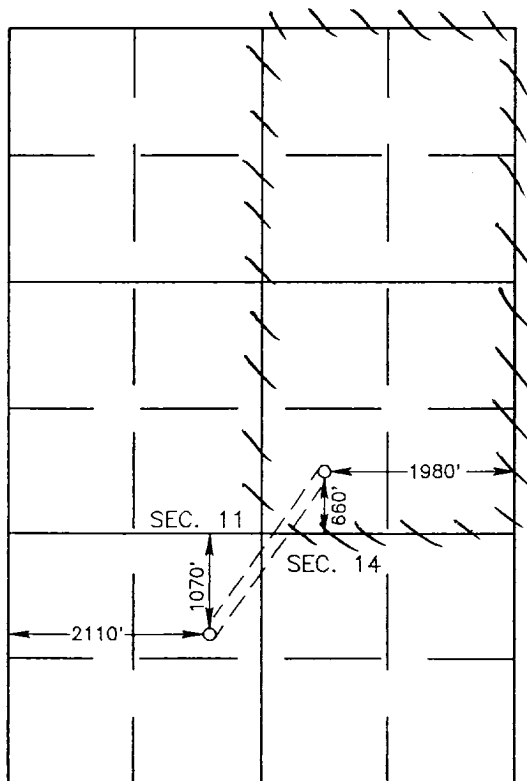
#### Surface Location

UL or lot No.	Section	Township	Range	Lot Idn	Feet from the	North/South line	Feet from the	East/West line	County
C	14	17 S	25 E		1070	NORTH	2110	WEST	EDDY

#### Bottom Hole Location If Different From Surface

UL or lot No.	Section	Township	Range	Lot Idn	Feet from the	North/South line	Feet from the	East/West line	County
O	11	17 S	25 E		660	SOUTH	1980	EAST	EDDY
Dedicated Acres 320	Joint or Infill J	Consolidation Code	Order No.						

NO ALLOWABLE WILL BE ASSIGNED TO THIS COMPLETION UNTIL ALL INTERESTS HAVE BEEN CONSOLIDATED  
OR A NON-STANDARD UNIT HAS BEEN APPROVED BY THE DIVISION



SCALE: 1"=2000'

#### OPERATOR CERTIFICATION

I hereby certify the the information  
contained herein is true and complete to the  
best of my knowledge and belief.

*E. Scott Kimbrough*  
Signature

E. Scott Kimbrough

Printed Name

Mgr. of Drlg & Prod.

Title

10/27/98

Date

#### SURVEYOR CERTIFICATION

I hereby certify that the well location shown  
on this plat was plotted from field notes of  
actual surveys made by me or under my  
supervision and that the same is true and  
correct to the best of my belief.

SEPTEMBER 17, 1998

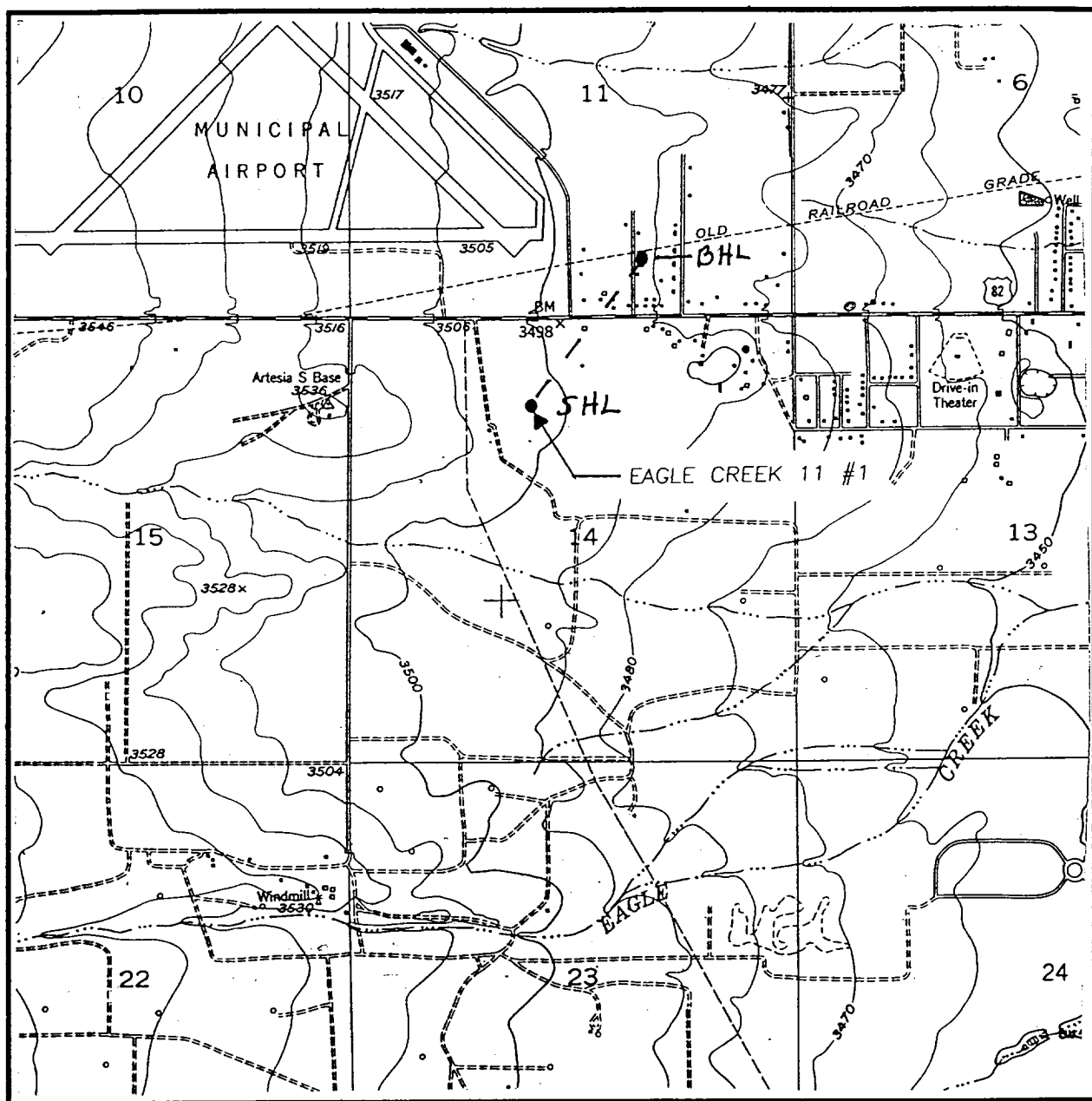
Date Surveyed CDG

Signature of Seal of  
Professional Surveyor

*Ronald S. Edson*  
Professional Surveyor

Certification No. 3239  
Professional Surveyor 12641

# LOCATION VERIFICATION MAP



SCALE: 1" = 2000'

CONTOUR INTERVAL:  
ARTESIA - 10'

SEC. 14 TWP. 17-S RGE. 25-E

SURVEY N.M.P.M.

COUNTY EDDY

DESCRIPTION 1070' FNL & 2110' FWL

ELEVATION 3498

OPERATOR EAGLE CREEK 11

LEASE NEARBURG PRODUCING COMPANY

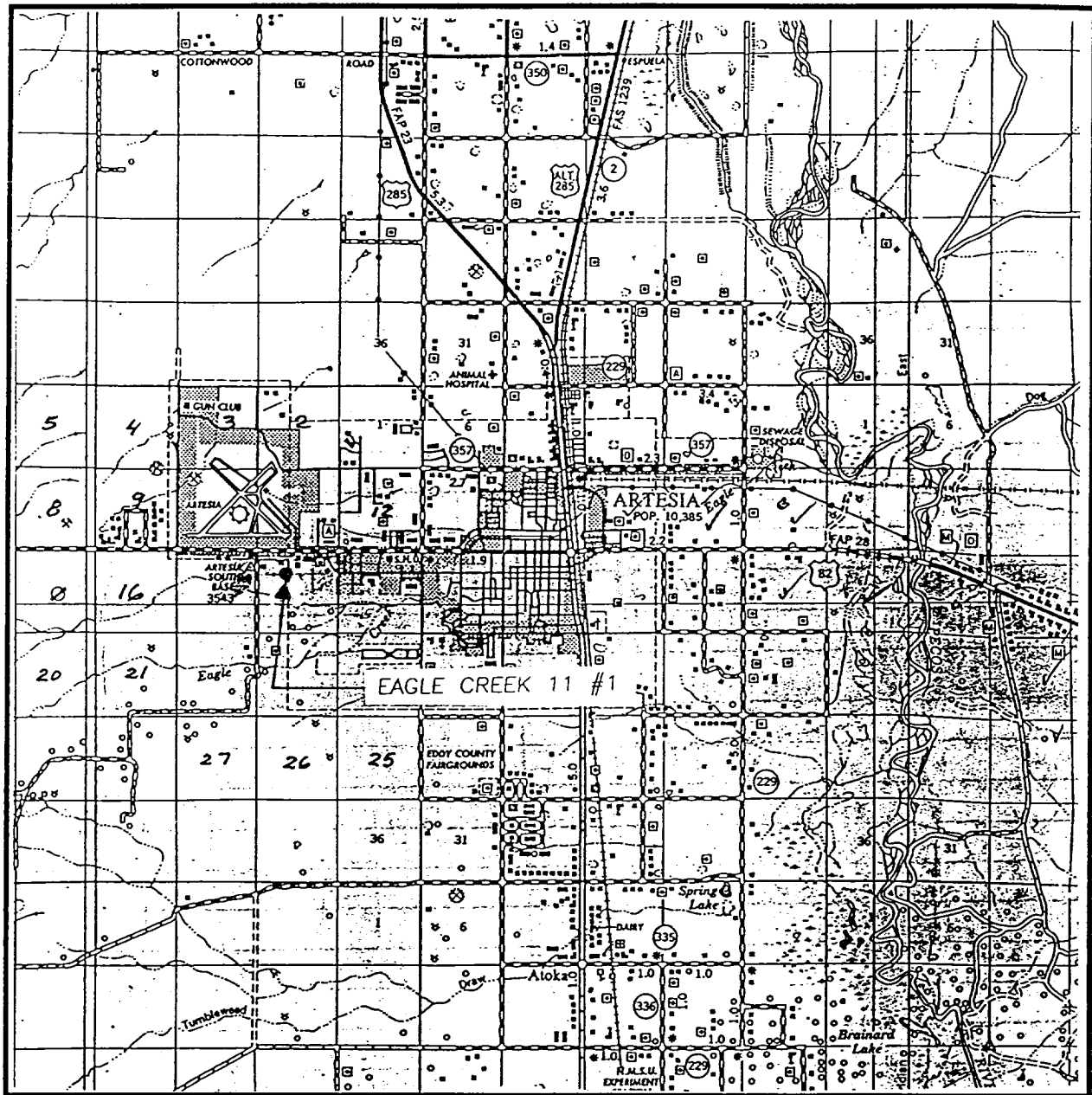
U.S.G.S. TOPOGRAPHIC MAP

ARTESIA, N.M.

**JOHN WEST ENGINEERING**  
**HOBBS, NEW MEXICO**

**(505) 393-3117**

# VICINITY MAP



SCALE: 1" = 2 MILES

SEC. 14 TWP. 17-S RGE. 25-E

SURVEY N.M.P.M.

COUNTY EDDY

DESCRIPTION 1070' FNL & 2110' FWL

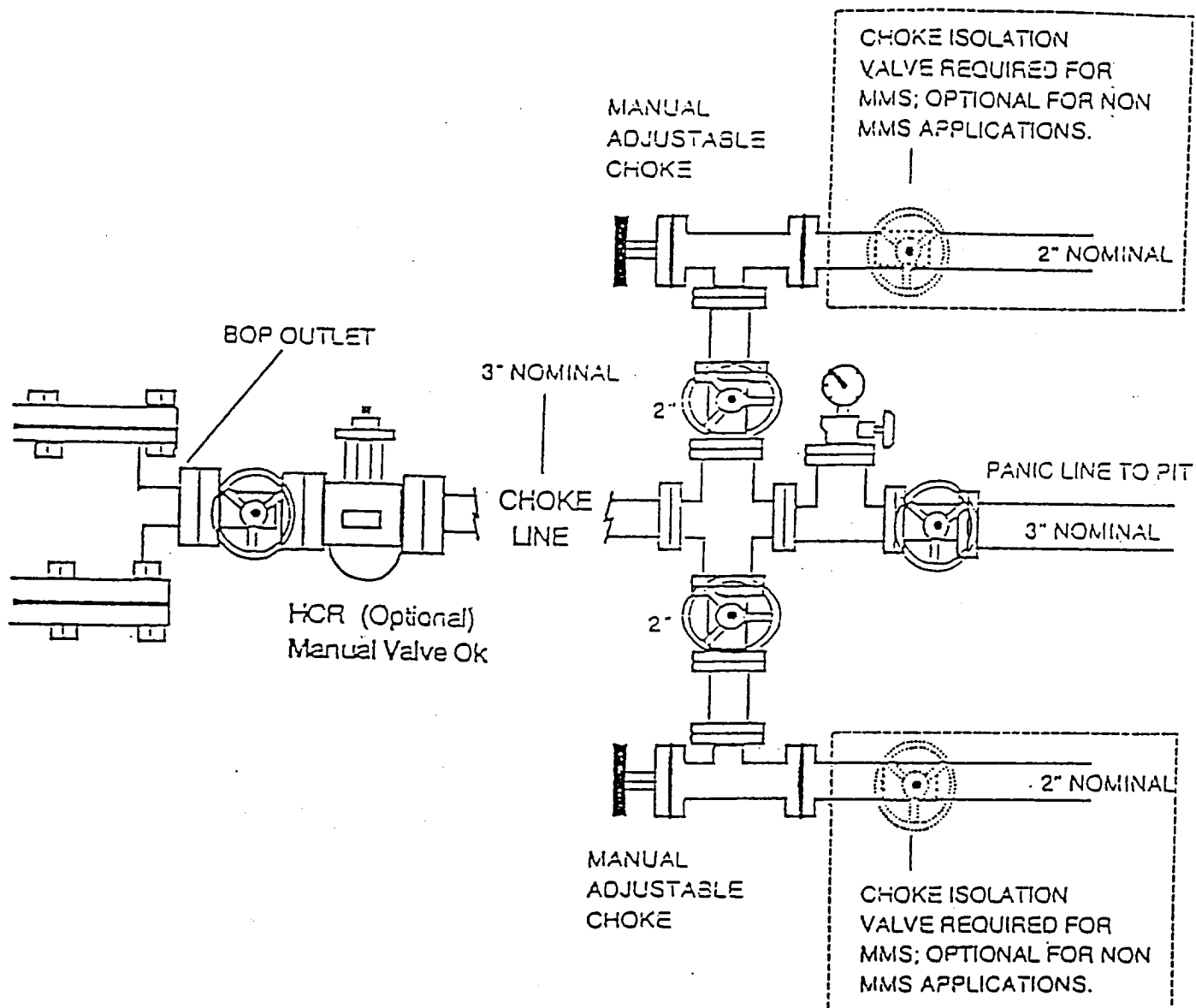
ELEVATION 3498

OPERATOR EAGLE CREEK 11

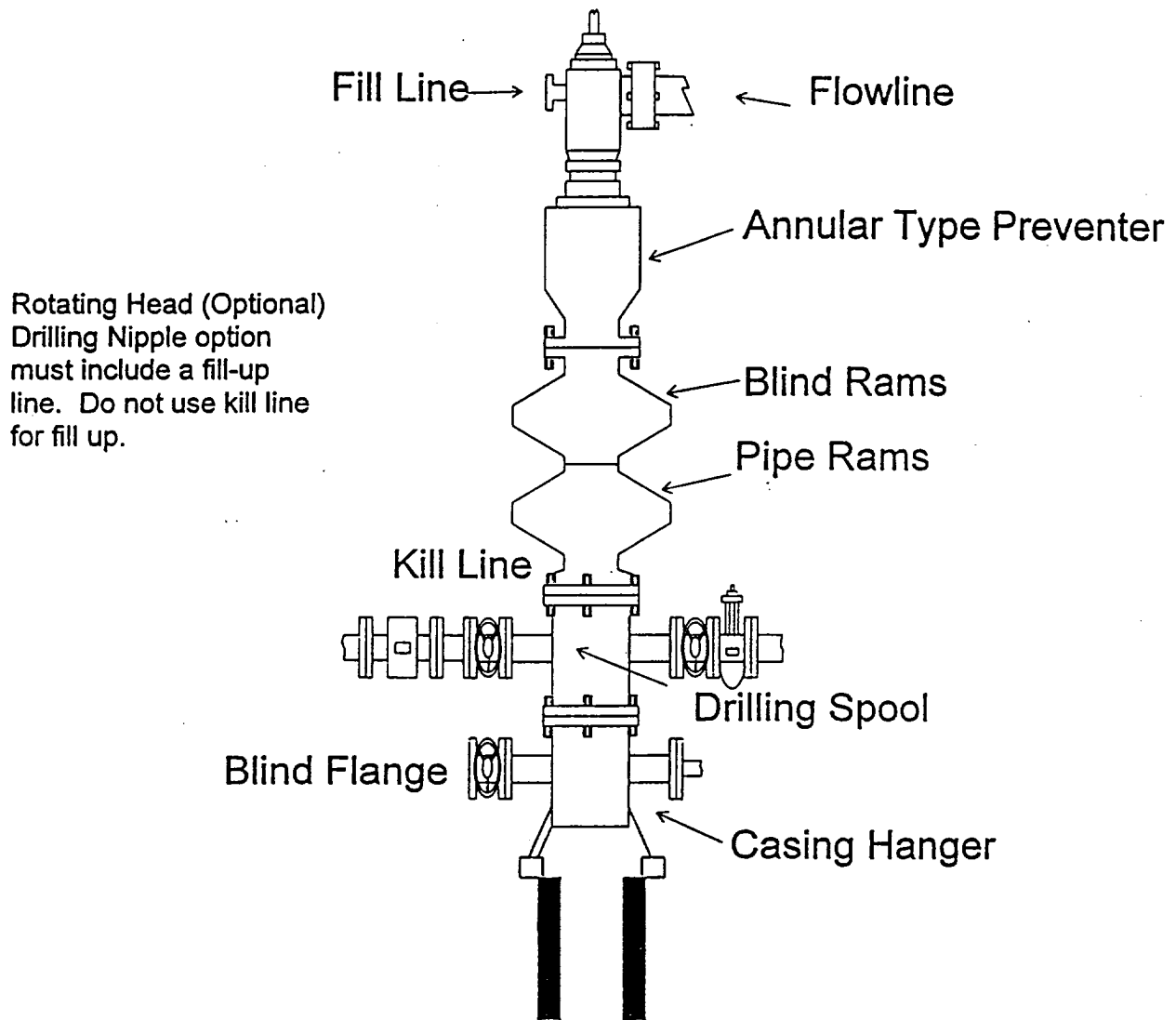
LEASE NEARBURG PRODUCING COMPANY

**JOHN WEST ENGINEERING**  
**HOBBS, NEW MEXICO**  
**(505) 393-3117**

NEARBURG PRODUCING COMPANY  
CHOKE MANIFOLD  
2M AND 3M SERVICE



EARBURG PRODUCING COMPANY  
BOPE SCHEMATIC



Rotating Head (Optional)  
Drilling Nipple option  
must include a fill-up  
line. Do not use kill line  
for fill up.

900 Series