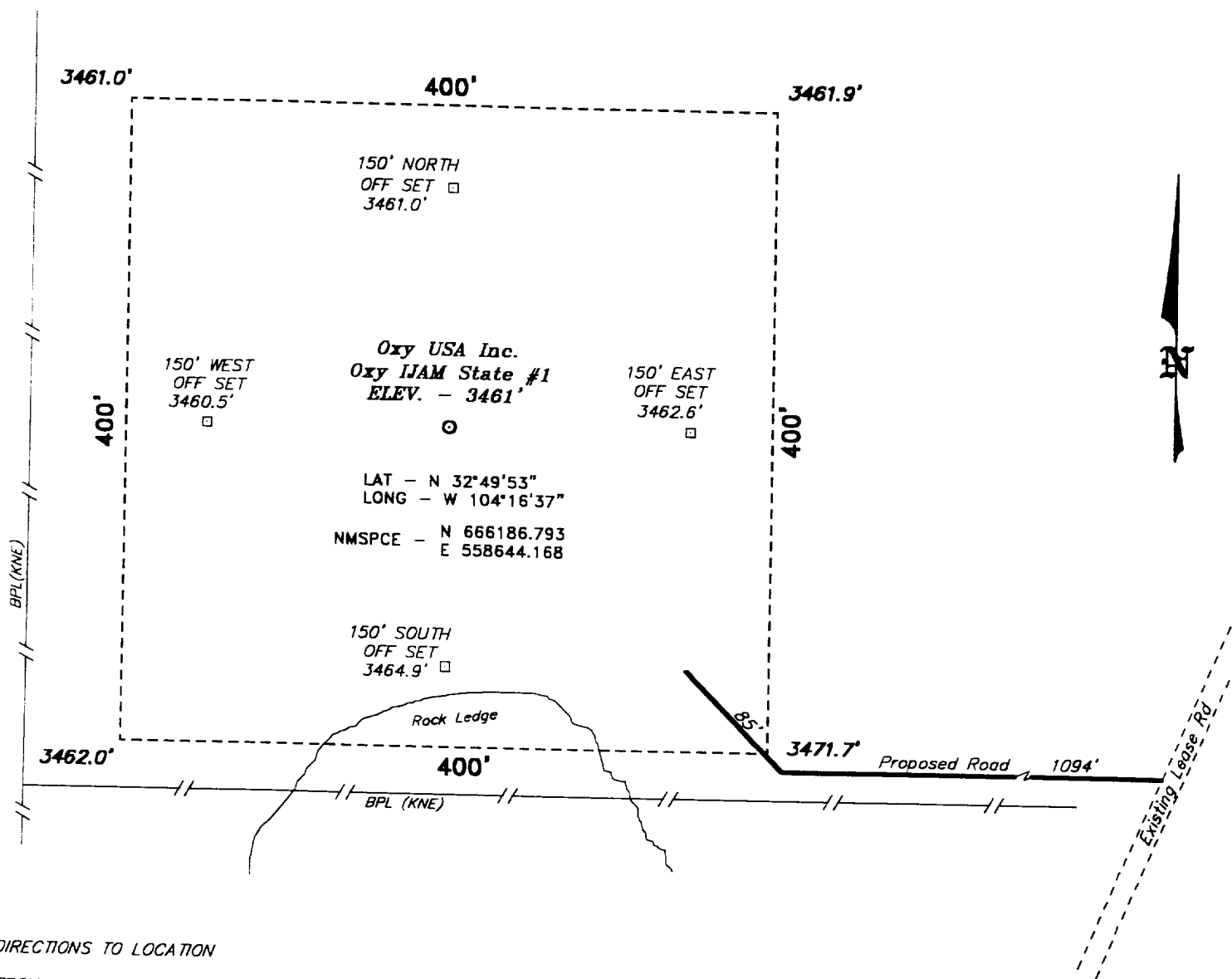
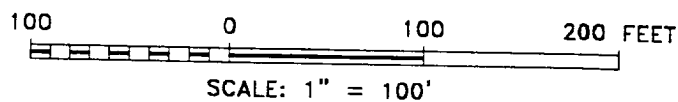


SECTION 16, TOWNSHIP 17 SOUTH, RANGE 27 EAST, N.M.P.M.,
EDDY COUNTY,
NEW MEXICO.



DIRECTIONS TO LOCATION

FROM JUNCTION STATE HWY 285 AND US HWY 82 IN ARTESIA
GO EAST APPROX. 7 MILES TO A LEASE ROAD; THENCE
NORTH APPROX. 0.75 MILE TO THE PROPOSED LEASE ROAD
WHICH LIES 1094 FEET FROM THE SOUTHEAST CORNER OF
THIS PROPOSED WELL LOCATION.



OXY USA INC.

REF: Oxy IJAM State No. 1 / Well Pad Topo

THE OXY IJAM STATE No. 1 LOCATED 1700' FROM THE
SOUTH LINE AND 660' FROM THE EAST LINE OF
SECTION 16, TOWNSHIP 17 SOUTH, RANGE 27 EAST,
N.M.P.M., EDDY COUNTY, NEW MEXICO.

BASIN SURVEYS

P.O. BOX 1786 - HOBBS, NEW MEXICO

W.O. Number: 9444

Drawn By: **K. GOAD**

Date: 12-15-99

Disk: KIC #132

04444 BWS