

DISTRICT I
P. O. Box 1980, Hobbs, NM 88240

DISTRICT II
P. O. Drawer DD, Artesia, NM 88210

DISTRICT III
1000 Rio Brazos Rd., Aztec, NM 87410

DISTRICT IV
P. O. Box 2088, Santa Fe, NM 87504-2088

State of New Mexico
Energy, Minerals and Natural Resources Department

Form C-102
Revised February 10, 1994

Instructions on back

OIL CONSERVATION DIVISION
PO Box 2088
Santa Fe, NM 87504-2088

Submit to Appropriate District Office

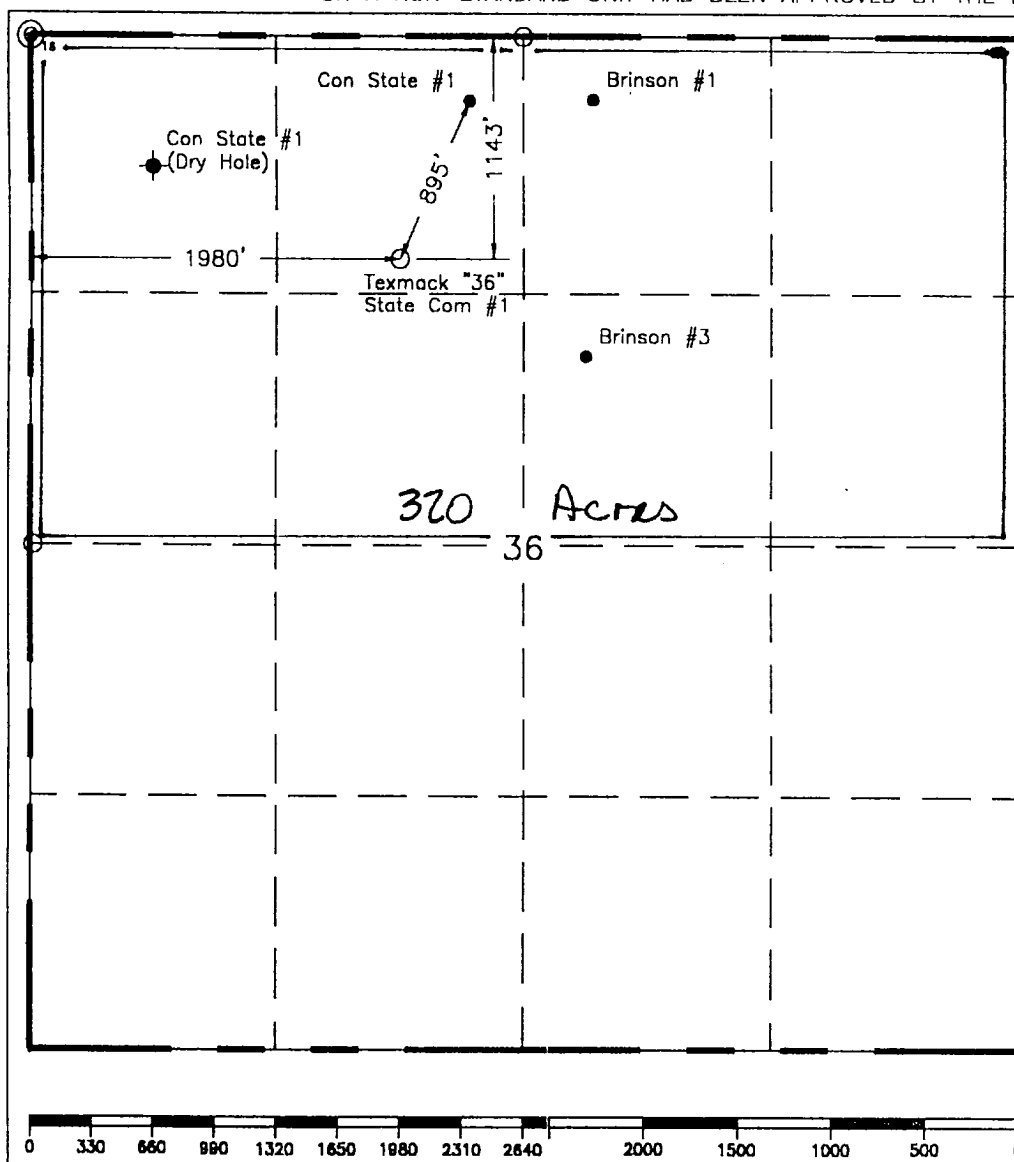
State Lease-4 copies
Fee Lease-3 copies

☐ AMENDED REPORT

WELL LOCATION AND ACREAGE DEDICATION PLAT

¹ API Number		² Pool Code		³ Pool Name Fren, Morrow; Undesignated, Atoka/Strawn					
⁴ Property Code		⁵ Property Name Texmack "36" State Com						⁶ Well Number 1	
⁷ GRID No. 22351		⁸ Operator Name TEXACO EXPLORATION & PRODUCTION, INC.						⁹ Elevation 4128'	
¹⁰ Surface Location									
UL or lot no. C	Section 36	Township 16-S	Range 31-E	Lot Idn	Feet from the 1143'	North/South line North	Feet from the 1980'	East/West line West	⁷ County Eddy
¹¹ Bottom Hole Location If Different From Surface									
UL or lot no.	Section	Township	Range	Lot Idn	Feet from the	North/South line	Feet from the	East/West line	⁷ County
¹² Dedicated Acres 320		¹³ Joint or Infill		¹⁴ Consolidation Code		¹⁵ Order No.			

NO ALLOWABLE WILL BE ASSIGNED TO THIS COMPLETION UNTIL ALL INTERESTS HAVE BEEN CONSOLIDATED
OR A NON-STANDARD UNIT HAS BEEN APPROVED BY THE DIVISION.



¹⁰OPERATOR CERTIFICATION

I hereby certify that the information contained herein is true and complete to the best of my knowledge and belief.

Signature
A. Phil Ryan

Printed Name
A. Phil Ryan

Position
Commission Coordinator

Company
Texaco Expl. & Prod. Inc.

Date
August 27, 1999

¹¹SURVEYOR CERTIFICATION

I hereby certify that the well location shown on this plat was plotted from field notes of actual surveys made by me or under my supervision, and that the same is true and correct to the best of my knowledge and belief.

Date Surveyed
August 25, 1999

Signature & Seal of
Professional Surveyor

Certificate No.
7264 John S. Piper

Sheet 1 of 2

○ = Staked Location ● = Producing Well ● = Injection Well ◊ = Water Supply Well ⊕ = Plugged & Abandon Well
⊙ = Found Section Corner, 2 or 3" Iron Pipe & GLO B.C. ○ = Found /4 Section Corner, 1" Iron Pipe & GLO B.C.

ADDITIONAL INFORMATION ON THE LOCATION

State Plane Coordinates			
Northing 685094.62		Easting 697301.63	
Latitude 32°52'56.33"		Longitude 103°49'31.01"	
Zone	North American Datum	Combined Grid Factor	Coordinate File
East	1983	0.9997675	Skelly.cr5
Drawing File		Field Book	
Tex36_ST1		Eddy County 6, Pg. 70	