

UNITED STATES
DEPARTMENT OF THE INTERIOR
BUREAU OF LAND MANAGEMENT
N.M. Dist. 2
1301 W. Grand Avenue
Artesia, NM 88210

FORM APPROVED
Budget Bureau No. 1004-0135
Expires March 31, 1993

SUNDRY NOTICES AND REPORTS ON WELLS

Do not use this form for proposals to drill or to deepen or reentry to a different reservoir.
Use "APPLICATION FOR PERMIT—" for such proposals

SUBMIT IN TRIPLICATE

1. Type of Well <input checked="" type="checkbox"/> Oil Well <input type="checkbox"/> Gas Well <input type="checkbox"/> Other
2. Name of Operator DEVON ENERGY PRODUCTION COMPANY, LP.
3. Address and Telephone No. 20 NORTH BROADWAY, SUITE 1500, OKLAHOMA CITY, OKLAHOMA 73102 (405) 235-3611
4. Location of Well (Footage, Sec., T., R., M., or Survey Description) 580' FSL & 1030' FEL, Section 35-17S-27E, Unit "P"

5. Lease Designation and Serial No. LC-057798
6. If Indian, Allottee or Tribe Name n/a
7. If Unit or CA, Agreement Designation n/a
8. Well Name and No. Logan 35 Federal #12
9. API Well No. 30-015-30750
10. Field and Pool, or Exploratory Area Red Lake; (Q-GB-SA) & Glorieta-Yeso, NE
11. County or Parish, State Eddy County, New Mexico

CHECK APPROPRIATE BOX(S) TO INDICATE NATURE OF NOTICE, REPORT, OR OTHER DATA

TYPE OF SUBMISSION	TYPE OF ACTION	
<input checked="" type="checkbox"/> Notice of Intent	<input type="checkbox"/> Abandonment	<input type="checkbox"/> Change of Plans
<input type="checkbox"/> Subsequent Report	<input type="checkbox"/> Recompletion	<input type="checkbox"/> New Construction
<input type="checkbox"/> Final Abandonment Notice	<input type="checkbox"/> Plugging Back	<input type="checkbox"/> Non-Routine Fracturing
	<input type="checkbox"/> Casing Repair	<input type="checkbox"/> Water Shut-Off
	<input type="checkbox"/> Altering Casing	<input type="checkbox"/> Conversion to Injection
	<input checked="" type="checkbox"/> Other <u>Perf & stimulate San Andres</u>	<input type="checkbox"/> Dispose Water

(Note: Report results of multiple completion on Well Completion or Recompletion Report and Log form.)

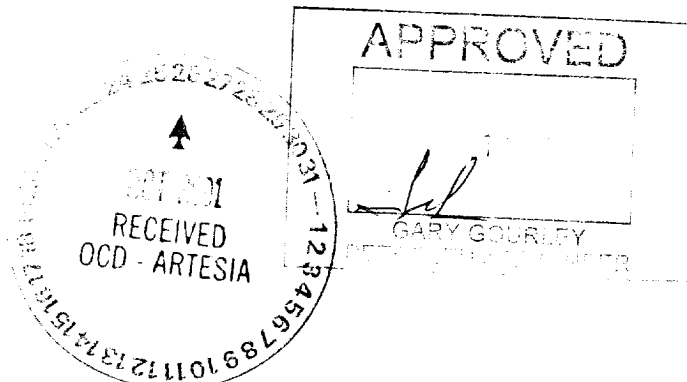
13. Describe Proposed or Completed Operations (Clearly state all pertinent details, and give pertinent dates, including estimated date of starting any proposed work. If well is directionally drilled, give subsurface locations and measured and true vertical depths for all markers and zones pertinent to this work.)*

8/22/01 – Pick up 4 3/4 Bit 6 3 1/8 collars RIH drilling CIBP chase plug to bottom tag @ 3675'. 311' rat hole POOH lay down collars. RIH w/prod equip. put on pump. RDMO SN @ 3348' w/107 jts

Total Production 9/4/01 - 30 Oil 60 Gas 275 Water

51300 Red Lake (Q-GB-SA) Oil 66% Gas 64%

96836 Red Lake; Glorieta-Yeso Oil 34% Gas 36%.



14. I hereby certify that the foregoing is true and correct

Karen A. Cottom

Signed

Title Engineering Technician

Date October 2, 2001

(This space for Federal or State office use)

Approved by

Title

Date

Conditions of approval, if any:

8. 14.

RECEIVED
2021 OCT -9 11:51:14
BUREAU OF THE DISTRICT
HOSPITAL OFFICE

UNITED STATES
DEPARTMENT OF THE INTERIOR
BUREAU OF LAND MANAGEMENT

SUBMIT IN DUPLICATE*

FORM APPROVED

(See instructions on reverse side)

Cons.
N.M. Div. 2
1301 W. Grand Avenue
Artesia, NM 88210

WELL REGISTRATION AND SERIAL NO.

LC-057798

WELL IDENTIFICATION AND SERIAL NO.

WELL IDENTIFICATION AND SERIAL NO.

WELL IDENTIFICATION AND SERIAL NO.

WELL IDENTIFICATION AND SERIAL NO.

WELL IDENTIFICATION AND SERIAL NO.

WELL IDENTIFICATION AND SERIAL NO.

WELL IDENTIFICATION AND SERIAL NO.

WELL IDENTIFICATION AND SERIAL NO.

WELL IDENTIFICATION AND SERIAL NO.

WELL IDENTIFICATION AND SERIAL NO.

WELL IDENTIFICATION AND SERIAL NO.

WELL IDENTIFICATION AND SERIAL NO.

WELL IDENTIFICATION AND SERIAL NO.

WELL IDENTIFICATION AND SERIAL NO.

WELL IDENTIFICATION AND SERIAL NO.

WELL IDENTIFICATION AND SERIAL NO.

WELL IDENTIFICATION AND SERIAL NO.

WELL IDENTIFICATION AND SERIAL NO.

WELL IDENTIFICATION AND SERIAL NO.

WELL IDENTIFICATION AND SERIAL NO.

WELL IDENTIFICATION AND SERIAL NO.

WELL IDENTIFICATION AND SERIAL NO.

WELL IDENTIFICATION AND SERIAL NO.

WELL IDENTIFICATION AND SERIAL NO.

WELL IDENTIFICATION AND SERIAL NO.

WELL IDENTIFICATION AND SERIAL NO.

WELL IDENTIFICATION AND SERIAL NO.

WELL IDENTIFICATION AND SERIAL NO.

WELL IDENTIFICATION AND SERIAL NO.

WELL IDENTIFICATION AND SERIAL NO.

WELL IDENTIFICATION AND SERIAL NO.

WELL IDENTIFICATION AND SERIAL NO.

WELL IDENTIFICATION AND SERIAL NO.

WELL IDENTIFICATION AND SERIAL NO.

WELL IDENTIFICATION AND SERIAL NO.

WELL IDENTIFICATION AND SERIAL NO.

WELL IDENTIFICATION AND SERIAL NO.

WELL IDENTIFICATION AND SERIAL NO.

WELL IDENTIFICATION AND SERIAL NO.

WELL IDENTIFICATION AND SERIAL NO.

WELL IDENTIFICATION AND SERIAL NO.

WELL IDENTIFICATION AND SERIAL NO.

WELL IDENTIFICATION AND SERIAL NO.

WELL IDENTIFICATION AND SERIAL NO.

WELL IDENTIFICATION AND SERIAL NO.

WELL IDENTIFICATION AND SERIAL NO.

WELL IDENTIFICATION AND SERIAL NO.

WELL IDENTIFICATION AND SERIAL NO.

WELL IDENTIFICATION AND SERIAL NO.

WELL IDENTIFICATION AND SERIAL NO.

WELL IDENTIFICATION AND SERIAL NO.

WELL IDENTIFICATION AND SERIAL NO.

WELL IDENTIFICATION AND SERIAL NO.

WELL IDENTIFICATION AND SERIAL NO.

WELL IDENTIFICATION AND SERIAL NO.

WELL IDENTIFICATION AND SERIAL NO.

WELL IDENTIFICATION AND SERIAL NO.

WELL IDENTIFICATION AND SERIAL NO.

WELL IDENTIFICATION AND SERIAL NO.

WELL IDENTIFICATION AND SERIAL NO.

WELL IDENTIFICATION AND SERIAL NO.

WELL IDENTIFICATION AND SERIAL NO.

WELL IDENTIFICATION AND SERIAL NO.

WELL IDENTIFICATION AND SERIAL NO.

WELL IDENTIFICATION AND SERIAL NO.

WELL IDENTIFICATION AND SERIAL NO.

WELL IDENTIFICATION AND SERIAL NO.

WELL IDENTIFICATION AND SERIAL NO.

WELL IDENTIFICATION AND SERIAL NO.

WELL IDENTIFICATION AND SERIAL NO.

WELL IDENTIFICATION AND SERIAL NO.

WELL IDENTIFICATION AND SERIAL NO.

WELL IDENTIFICATION AND SERIAL NO.

WELL IDENTIFICATION AND SERIAL NO.

WELL IDENTIFICATION AND SERIAL NO.

WELL IDENTIFICATION AND SERIAL NO.

WELL IDENTIFICATION AND SERIAL NO.

WELL IDENTIFICATION AND SERIAL NO.

WELL IDENTIFICATION AND SERIAL NO.

WELL IDENTIFICATION AND SERIAL NO.

WELL IDENTIFICATION AND SERIAL NO.

WELL IDENTIFICATION AND SERIAL NO.

WELL IDENTIFICATION AND SERIAL NO.

WELL IDENTIFICATION AND SERIAL NO.

WELL IDENTIFICATION AND SERIAL NO.

WELL IDENTIFICATION AND SERIAL NO.

WELL IDENTIFICATION AND SERIAL NO.

WELL IDENTIFICATION AND SERIAL NO.

WELL IDENTIFICATION AND SERIAL NO.

WELL IDENTIFICATION AND SERIAL NO.

WELL IDENTIFICATION AND SERIAL NO.

WELL IDENTIFICATION AND SERIAL NO.

WELL COMPLETION OR RECOMPLETION REPORT AND LOG

1a. TYPE OF WELL: OIL WELL <input checked="" type="checkbox"/> GAS WELL <input type="checkbox"/> DRY <input type="checkbox"/> Other <input type="checkbox"/>		7. UNIT AGREEMENT NAME N/A	
b. TYPE OF COMPLETION: NEW WELL <input type="checkbox"/> WORK OVER <input type="checkbox"/> DEEP-EN <input type="checkbox"/> PLUG BACK <input type="checkbox"/> DIFF. RESVR <input checked="" type="checkbox"/> Other <input type="checkbox"/>		8. FARM OR LEASE NAME, WELL NO. Logan 35 Federal #12	
2. NAME OF OPERATOR DEVON ENERGY CORPORATION (NEVADA)		9. API WELL NO. 30-015-30750	
3. ADDRESS AND TELEPHONE NO. 20 N. BROADWAY, SUITE 1500, OKC, OK 73102-3260 (405) 235-5611		10. FIELD AND POOL, OR WILDCAT Red Lake; (Q-GB-SA) & Glorieta-Yeso, NE	
4. LOCATION OF WELL (Report location clearly and in accordance with any State requirements)* At surface 580' FSL & 1030' FEL, At top prod. interval reported below At total depth		11. SEC., T., R., M., OR BLOCK AND SURVEY OR AREA Section, 35-17S-R27E, Unit "P"	
14. PERMIT NO.		DATE ISSUED 8/30/99	12. COUNTY OR PARISH Eddy County
13. STATE NM			
15. DATE SPUDDED 11/30/00	16. DATE T.D. REACHED 12/6/00	17. DATE COMPL. (Ready to prod.) 8/23/01	18. ELEVATIONS (DF, RKB, RT, GR, ETC.)* KB 3641'; GL 3629'; DF 3640'
19. ELEV. CASINGHEAD			
20. TOTAL DEPTH, MD & TVD 3800'	21. PLUG, BACK T.D., MD & TVD 3675'	22. IF MULTIPLE COMPL., HOW MANY?	23. INTERVALS DRILLED BY X
24. PRODUCING INTERVAL(S), OF THIS COMPLETION—TOP, BOTTOM, NAME (MD AND TVD)* Yeso 3216' - 3334' Upper San Andres 2266' - 2506' (27 holes) Lower San Andres 2796' - 3002' (32 holes)			25. WAS DIRECTIONAL SURVEY MADE No
26. TYPE ELECTRIC AND OTHER LOGS RUN			27. WAS WELL CORED No
28. CASING RECORD (Report all strings set in well)			
CASING SIZE/GRADE	WEIGHT, LB./FT.	DEPTH SET (MD)	HOLE SIZE
8 5/8" J-55	24#	1145'	11"
5 1/2" J-55	15.5#	3798'	7 7/8"
		29. LINER RECORD	
SIZE	TOP (MD)	BOTTOM (MD)	SACKS CEMENT*
		30. TUBING RECORD	
SIZE	DEPTH SET (MD)	PACKER SET (MD)	
		31. PERFORATION RECORD (Interval, size and number)	
YESO 3216' - 3334' (20-40 EHD HOLES)		32. ACID SHOT, FRACTURE, CEMENT SQUEEZE, ETC.	
UPPER SAN ANDRES 2266' - 2506' (27 - .40 EHD HOLES)		DEPTH INTERVAL (MD)	
LOWER SAN ANDRES 2796' - 3002' (32 - .40 EHD HOLES)		AMOUNT AND KIND OF MATERIAL USED	
		2266' - 2506'	
		Acid w/2500 gal 15% NeFe acid	
		Frac'd w/129,000 gal + 73,750# 20/40 Brady SD + 16,500# 16/30 CRC SD	
		2796' - 3002'	
		Acid w/1500 gals of 15% NeFe W/add'l 143 water; re-acid w/2000 gal 15% NeFe acid.	
		Frac'd w 96,000 gals + 58,000# 20/40 Brady + 15,000# 16/30 CRC SD	
33.* PRODUCTION			
DATE FIRST PRODUCTION 8/23/01	PRODUCTIONS METHOD 1 (Flowing, gas lift, pumping—size and type of pump) Pumping (2" x 2 1/2" x 20' RWTC)		WELL STATUS (Producing or shut-in) Producing
DATE OF TEST 9/4/01	HOURS TESTED 24	CHOKE SIZE	PROD'N FOR TEST PERIOD
FLOW. TUBING PRESS.	CASING PRESSURE	CALCULATED 24-HOUR RATE	OIL-BBL. 30
		GAS-MCF. 60	
		WATER-BBL. 275	
		OIL GRAVITY-API (CORR.) 42°	
34. DISPOSITION OF GAS (Sold, used for fuel, vented, etc.) Sold		TEST WITNESSED BY Danny Hokett	
35. LIST OF ATTACHMENTS			
36. I hereby certify that the foregoing and attached information is complete and correct as determined from all available records			

SIGNED

KAREN COTTOM
TITLE ENGINEERING TECHNICIAN

DATE October 2, 2001

*(See Instructions and Spaces for Additional Data on Reverse Side)

RECEIVED
2001 OCT -9 PM 5:14
BUREAU OF THE DEPT OF JUSTICE
FEDERAL BUREAU OF INVESTIGATION

TOP

[illegible]

RECEIVED
2001 OCT -9 PM 9:14
BUREAU OF LAND MANAGEMENT
FOWELL OFFICE

DISTRICT I
P.O. Box 1980, Hobbs, NM 88240

DISTRICT II
P.O. Drawer DD, Artesia, NM 88210

DISTRICT III
1000 Rio Brazos Rd., Aztec, NM 87410

State of New Mexico
Energy, Minerals and Natural Resources Department

Form C-102
Revised February 10, 1994
Instruction on back
Submit to Appropriate District Office
State Lease - 4 Copies
Fee Lease - 3 Copies

OIL CONSERVATION DIVISION

P.O. Box 2088
Santa Fe, New Mexico 87504-2088

☐ AMENDED REPORT

WELL LOCATION AND ACREAGE DEDICATION PLAT

API Number 30-05-30750	Pool Code 51300+96836	Pool Name RED LAKE (Q-GP-SA)+Glorieta-Yeso, Ne
Property Code 23714	Property Name LOGAN "35" FEDERAL	Well Number 12
OGRID No. 6037	Operator Name DEVON ENERGY CORPORATION	Elevation 3629'

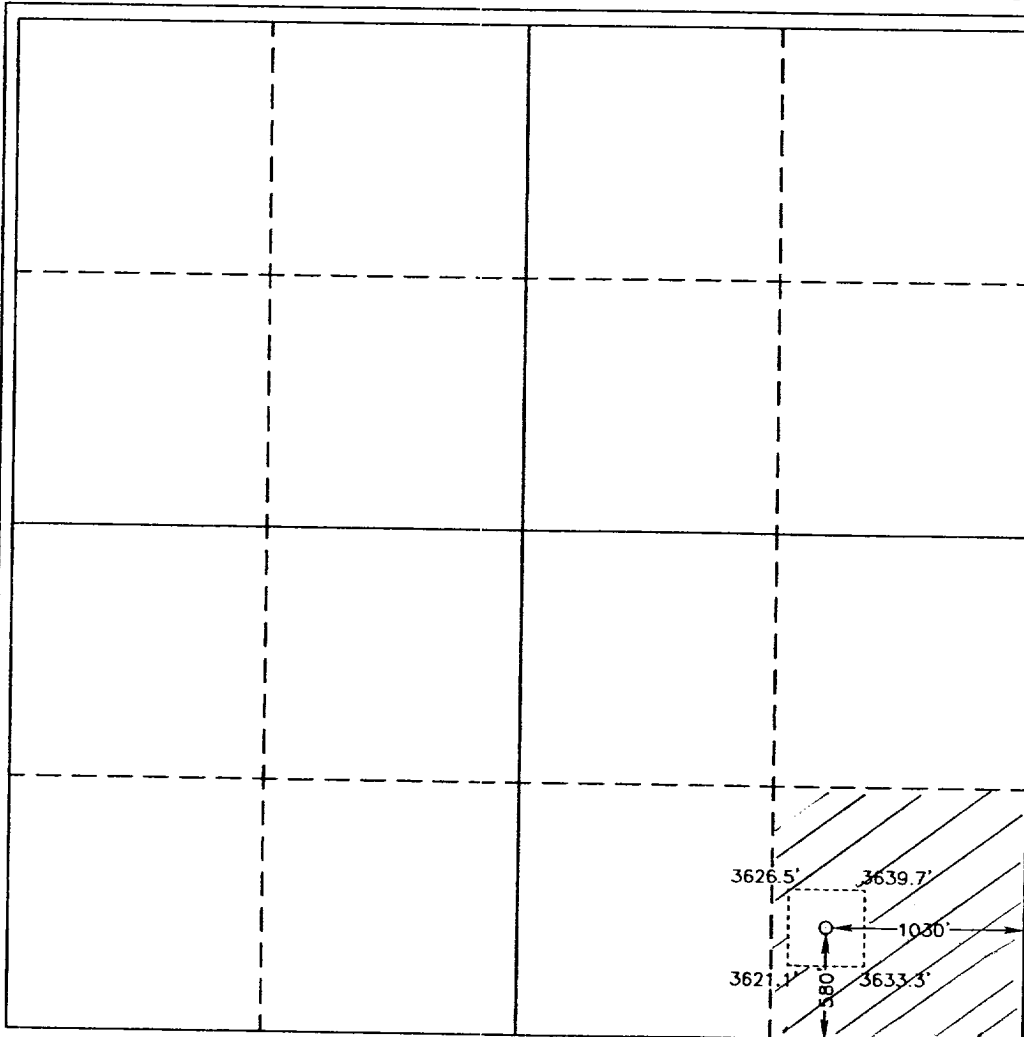
Surface Location

UL or lot No.	Section	Township	Range	Lot Idn	Feet from the	North/South line	Feet from the	East/West line	County
P	35	17 S	27 E		580	SOUTH	1030	EAST	EDDY

Bottom Hole Location If Different From Surface

UL or lot No.	Section	Township	Range	Lot Idn	Feet from the	North/South line	Feet from the	East/West line	County
Dedicated Acres	Joint or Infill	Consolidation Code	Order No.						

NO ALLOWABLE WILL BE ASSIGNED TO THIS COMPLETION UNTIL ALL INTERESTS HAVE BEEN CONSOLIDATED
OR A NON-STANDARD UNIT HAS BEEN APPROVED BY THE DIVISION



OPERATOR CERTIFICATION

I hereby certify the the information
contained herein is true and complete to the
best of my knowledge and belief.

Karen Cotton
Signature

Karen Cotton
Printed Name

Engineering Technician
Title

October 2, 2001
Date

SURVEYOR CERTIFICATION

I hereby certify that the well location shown
on this plat was plotted from field notes of
actual surveys made by me or under my
supervision and that the same is true and
correct to the best of my belief.

May 5, 1999

Date Surveyed
Signature & Seal of
Professional Surveyor



W.O. No. 9144C
Surveyor No. Gary L. Jones 7977

BASIN SURVEYS

10-10-10 10:10:10

RECEIVED
2001 OCT -9 AM 9:14
FEDERAL BUREAU OF INVESTIGATION
U.S. DEPARTMENT OF JUSTICE