

DISTRICT I  
P.O. Box 1980, Hobbs, NM 88241-1980

DISTRICT II  
P.O. Drawer DD, Artesia, NM 88211-0719

DISTRICT III  
1000 Rio Brazos Rd., Artec, NM 87410

DISTRICT IV  
P.O. Box 2088, Santa Fe, NM 87504-2088

State of New Mexico  
Energy, Minerals and Natural Resources Department

SEP 13 1999  
Form C-102  
Revised February 10, 1994  
Submit to Appropriate District Office  
State Lease - 4 Copies  
Fee Lease - 3 Copies

OIL CONSERVATION DIVISION

P.O. Box 2088  
Santa Fe, New Mexico 87504-2088

☐ AMENDED REPORT

WELL LOCATION AND ACREAGE DEDICATION PLAT

API Number 30-015-30773	Pool Code 3230	Pool Name ARTESIA QUEEN GRBG SA
Property Code 6533	Property Name SAMEDAN STATE	Well Number 2
OGRID No. 14049	Operator Name MARBOB ENERGY CORPORATION	Elevation 3670

Surface Location

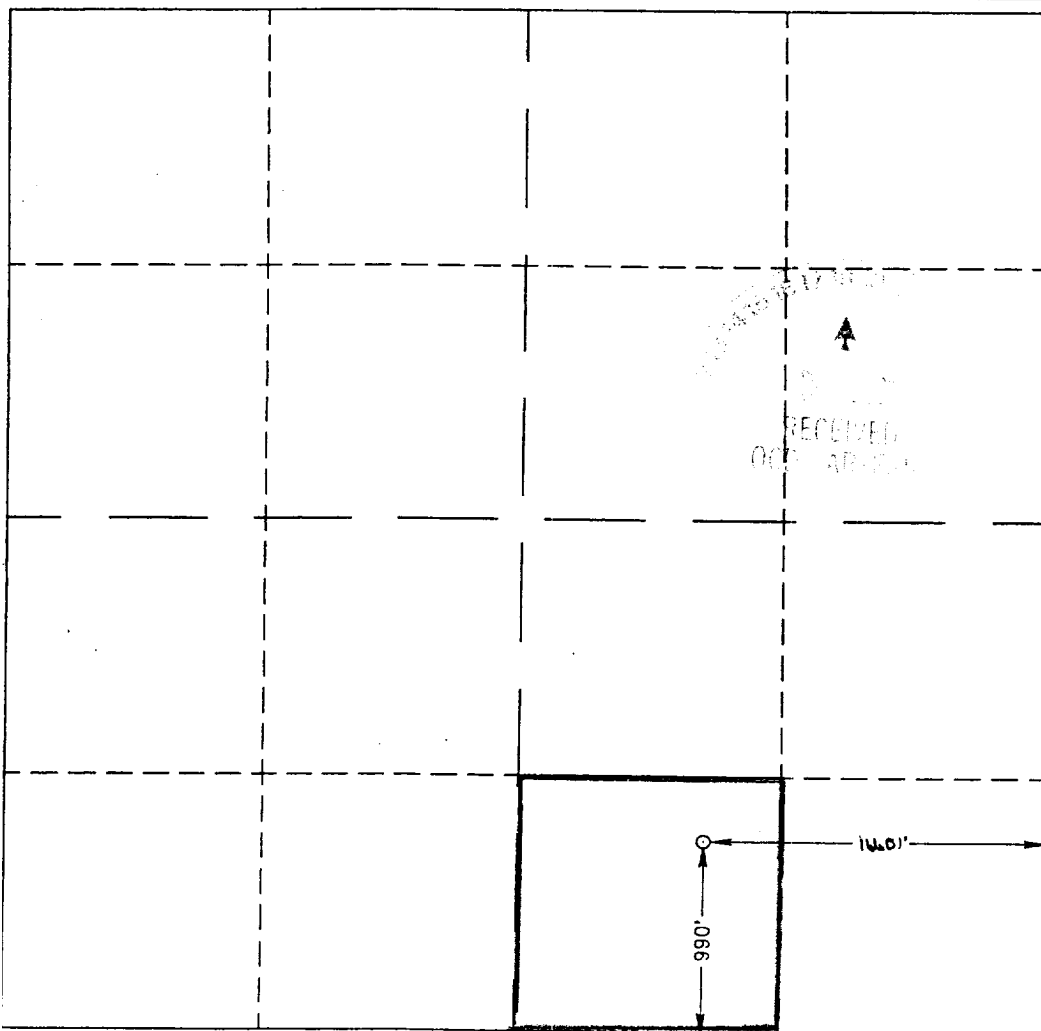
UL or lot No. 0	Section 27	Township 17 S	Range 28 E	Lot Idn	Feet from the 990	North/South line SOUTH	Feet from the 1660	East/West line EAST	County EDDY
--------------------	---------------	------------------	---------------	---------	----------------------	---------------------------	-----------------------	------------------------	----------------

Bottom Hole Location If Different From Surface

UL or lot No.	Section	Township	Range	Lot Idn	Feet from the	North/South line	Feet from the	East/West line	County
---------------	---------	----------	-------	---------	---------------	------------------	---------------	----------------	--------

Dedicated Acres 40	Joint or Infill	Consolidation Code	Order No.
-----------------------	-----------------	--------------------	-----------

NO ALLOWABLE WILL BE ASSIGNED TO THIS COMPLETION UNTIL ALL INTERESTS HAVE BEEN CONSOLIDATED  
OR A NON-STANDARD UNIT HAS BEEN APPROVED BY THE DIVISION



OPERATOR CERTIFICATION

I hereby certify the the information  
contained herein is true and complete to the  
best of my knowledge and belief.

*Diana J. Cannon*  
Signature

DIANA J. CANNON  
Printed Name

PRODUCTION ANALYST

DECEMBER 17, 2001  
Date

SURVEYOR CERTIFICATION

I hereby certify that the well location shown  
on this plat was plotted from field notes of  
actual surveys made by me or under my  
supervision, and that the same is true and  
correct to the best of my belief.

SEPTEMBER 8, 1999

Date Surveyed  
Signature & Seal  
Professional Surveyor  
NEW MEXICO  
3239  
P.O. Num. 99-140718  
Certificate No. RONALD S. EDSON, 3239  
GARY L. EDSON, 12641  
JACON, McDONALD, 12185