

DISTRICT I
P.O. Box 1980, Hobbs, NM 88241-1980

DISTRICT II
P.O. Drawer DD, Artesia, NM 88211-0719

DISTRICT III
1000 Rio Brazos Rd., Aztec, NM 87410

DISTRICT IV
P.O. BOX 2088, SANTA FE, N.M. 87504-2088

State of New Mexico
Energy, Minerals and Natural Resources Department

Form C-102
Revised February 10, 1994
Submit to Appropriate District Office
State Lease - 4 Copies
Fee Lease - 3 Copies

OIL CONSERVATION DIVISION

P.O. Box 2088
Santa Fe, New Mexico 87504-2088

X AMENDED REPORT

WELL LOCATION AND ACREAGE DEDICATION PLAT

API Number 3001530973	Pool Code	Pool Name Diamond Mound Morrow
Property Code	Property Name CARBON VALLEY 14 FEDERAL	Well Number 2
OGRID No.	Operator Name CONCHO RESOURCES, INC	Elevation 3590

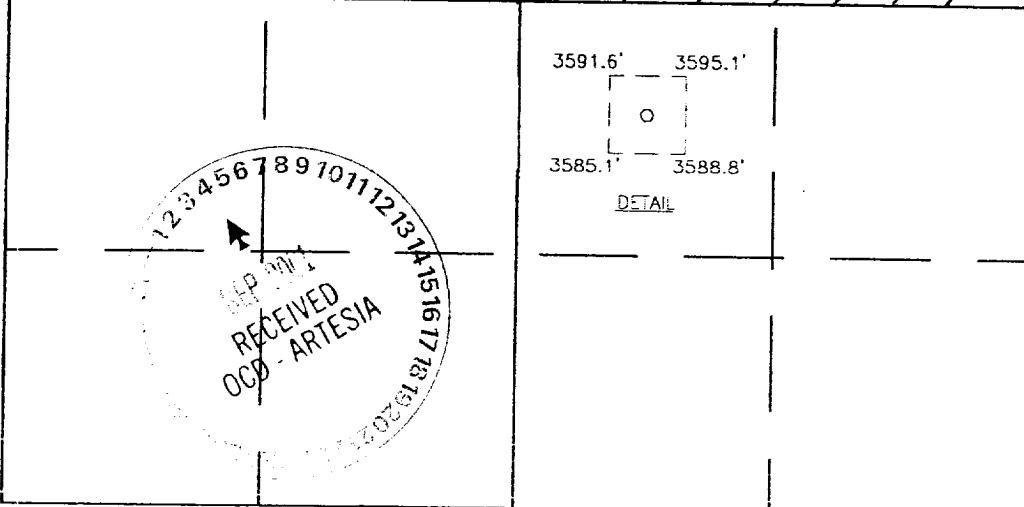
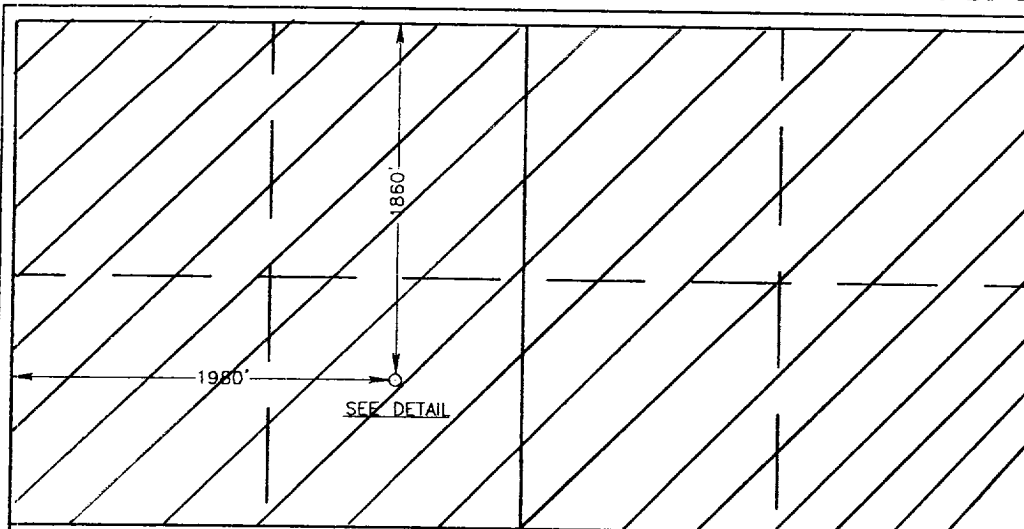
Surface Location

UL or lot No. F	Section 14	Township 16 S	Range 27 E	Lot Idn	Feet from the 1860	North/South line NORTH	Feet from the 1980	East/West line WEST	County EDDY
---------------------------	----------------------	-------------------------	----------------------	---------	------------------------------	----------------------------------	------------------------------	-------------------------------	-----------------------

Bottom Hole Location If Different From Surface

UL or lot No.	Section	Township	Range	Lot Idn	Feet from the	North/South line	Feet from the	East/West line	County
Dedicated Acres	Joint or Infill	Consolidation Code	Order No.						

NO ALLOWABLE WILL BE ASSIGNED TO THIS COMPLETION UNTIL ALL INTERESTS HAVE BEEN CONSOLIDATED
OR A NON-STANDARD UNIT HAS BEEN APPROVED BY THE DIVISION



OPERATOR CERTIFICATION

I hereby certify the the information
contained herein is true and complete to the
best of my knowledge and belief.

[Signature]
Signature
Jim L. Linville, Jr
Printed Name
Sr. Ops. Engineer
Title
8/24/01
Date

SURVEYOR CERTIFICATION

I hereby certify that the well location shown
on this plat was plotted from field notes of
actual surveys made by me or under my
supervision, and that the same is true and
correct to the best of my belief.

DECEMBER 20, 1999

Date Surveyed
Signature & Seal of
Professional Surveyor
[Signature]
Professional Seal
Certificate No. **RONALD A. EDSON 3239**
GARY EDSON 12641
MACON McDONALD 12185