

District I
PO Box 1980, Hobbs, NM 88241-1980

District II
811 South First, Artesia, NM 88210

District III
1000 Rio Brazos Rd., Aztec, NM 87410

District IV
2040 South Pacheco, Santa Fe, NM 87505

State of New Mexico
Energy, Minerals & Natural Resources Department

OIL CONSERVATION DIVISION
2040 South Pacheco
Santa Fe, NM 87505

Form C-101
Revised October 18, 1994
Instructions on back
Submit to Appropriate District Office
State Lease - 6 Copies
Fee Lease - 5 Copies

☒ AMENDED REPORT

APPLICATION FOR PERMIT TO DRILL, RE-ENTER, DEEPEN, PLUGBACK, OR ADD A ZONE

¹ Operator Name and Address MARBOB ENERGY CORPORATION P.O. BOX 227 ARTESIA, NM 88210		² OGRID Number 14049
		³ API Number 30-015-30977
⁴ Property Code 25375	⁵ Property Name "D" STATE	⁶ Well No. 18

⁷Surface Location

UL or lot no.	Section	Township	Range	Lot Idn	Feet from the	North/South line	Feet from the	East/West Line	County
L	35	17S	28E		2310	SOUTH	990	WEST	EDDY

⁸Proposed Bottom Hole Location If Different From Surface

UL or lot no.	Section	Township	Range	Lot Idn	Feet from the	North/South line	Feet from the	East/West Line	County
⁹ Proposed Pool 1 ARTESIA QUEEN GRBG SA GLOBIETTA YESO					¹⁰ Proposed Pool 2 UNDES ARTESIA; Globiotta - yeso				

¹¹ Work Type Code N	¹² Well Type Code O	¹³ Cable/Rotary R	¹⁴ Lease Type Code S	¹⁵ Ground Level Elevation 3678
¹⁶ Multiple No	¹⁷ Proposed Depth 4700	¹⁸ Formation YESO	¹⁹ Contractor L&R	²⁰ Spud Date 03-16-00

²¹Proposed Casing and Cement Program

Hole Size	Casing Size	Casing weight/foot	Setting Depth	Sacks of Cement	Estimated TOC
12 1/4"	8 5/8"	24#	500'	300 SX	██████████ CIRC To
7 7/8"	5 1/2"	17#	4700'	600 SX	██████████ Surface
					██████████
					██████████
					Tie back

²²Describe the proposed program. If this application is to DEEPEN or PLUG BACK give the data on the present productive zone and proposed new productive zone. Describe the blowout prevention program, if any. Use additional sheets if necessary.

DRILL TO 500', RUN & CMT 8 5/8" CSG, REDUCE HOLE & DRILL TO 4700', RUN & CMT 5 1/2" CSG, PUT WELL ON PRODUCTION

²³I hereby certify that the information given above is true and complete to the best of my knowledge and belief.

Signature: Robin Cockrum

Printed name: ROBIN COCKRUM

Title: PRODUCTION ANALYST

Date: 02-17-00

Phone: 748-3303

OIL CONSERVATION DIVISION

Approved By: **ORIGINAL SIGNED BY TIM W. GUM**
DISTRICT II SUPERVISOR

B6A

Title:

Approval Date: 2-22-00

Expiration Date: 2-22-01

Conditions of Approval:
Attached: ☐

2000

2000
2000
2000
2000
2000

DISTRICT I
P.O. Box 1880, Hobbs, NM 88241-1880

DISTRICT II
P.O. Drawer DD, Artesia, NM 88211-0718

DISTRICT III
1000 Rio Brazos Rd., Aztec, NM 87410

DISTRICT IV
P.O. BOX 2088, SANTA FE, N.M. 87504-2088

State of New Mexico
Energy, Minerals and Natural Resources Department

FEB 14 2000
Form C-102
Revised February 10, 1994
Submit to Appropriate District Office
State Lease - 4 Copies
Fee Lease - 3 Copies

OIL CONSERVATION DIVISION

P.O. Box 2088
Santa Fe, New Mexico 87504-2088

☐ AMENDED REPORT

WELL LOCATION AND ACREAGE DEDICATION PLAT

API Number	Pool Code	Pool Name	(ARTESIA; QUEEN GRBG SA) (GLORIETTA YESO)
Property Code	Property Name	Well Number	"D" STATE 18
OGRID No. 14049	Operator Name	Elevation	MARBOB ENERGY CORPORATION 3678

Surface Location

UL or lot No.	Section	Township	Range	Lot Idn	Feet from the	North/South line	Feet from the	East/West line	County
L	35	17 S	28 E		2310	SOUTH	990	WEST	EDDY

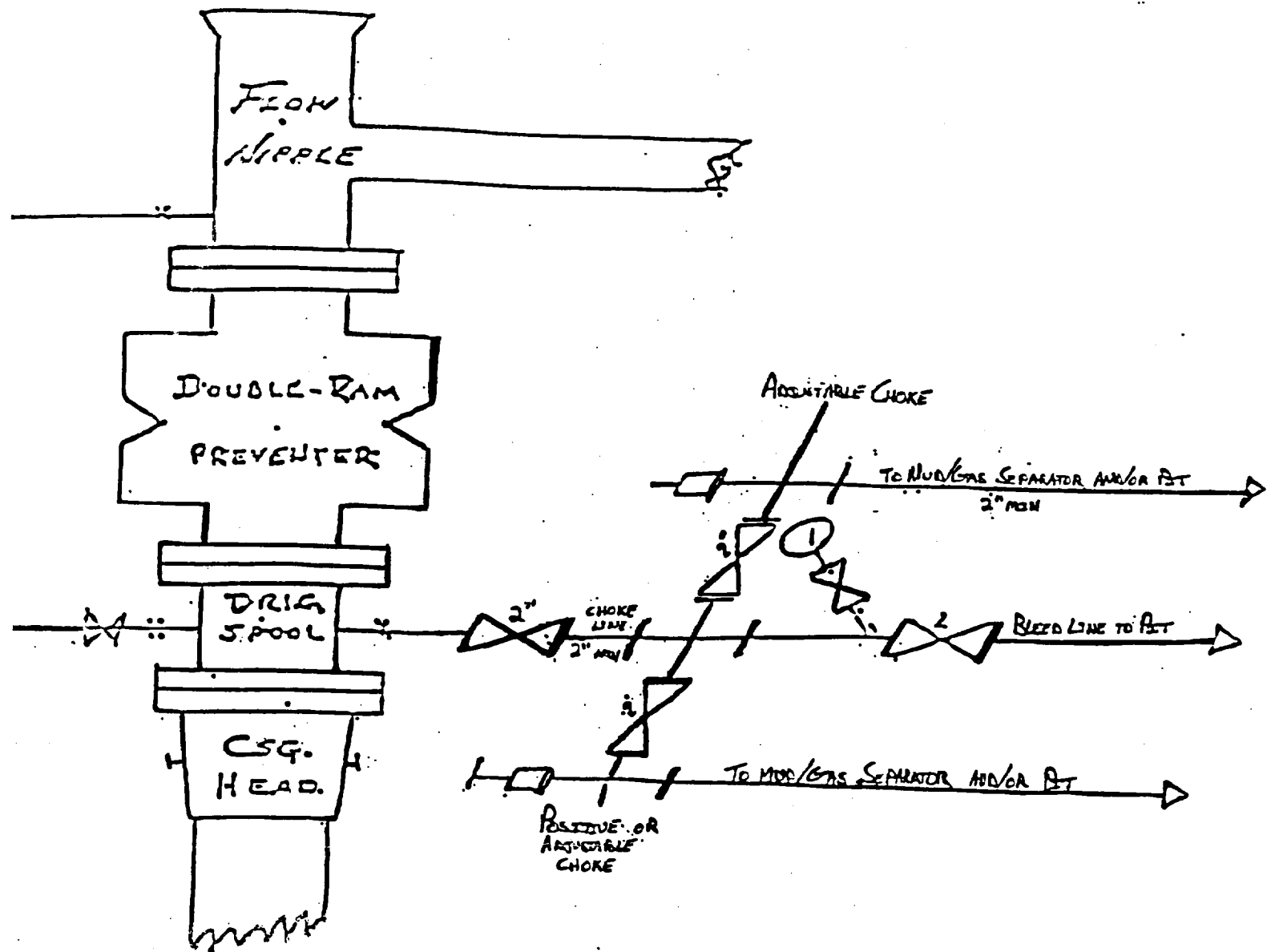
Bottom Hole Location If Different From Surface

UL or lot No.	Section	Township	Range	Lot Idn	Feet from the	North/South line	Feet from the	East/West line	County
Dedicated Acres	Joint or Infill	Consolidation Code	Order No.						
40									

NO ALLOWABLE WILL BE ASSIGNED TO THIS COMPLETION UNTIL ALL INTERESTS HAVE BEEN CONSOLIDATED
OR A NON-STANDARD UNIT HAS BEEN APPROVED BY THE DIVISION

				OPERATOR CERTIFICATION <i>I hereby certify the the information contained herein is true and complete to the best of my knowledge and belief.</i> Signature: <u>Robin Cockrum</u> Printed Name: <u>ROBIN COCKRUM</u> Title: <u>PRODUCTION ANALYST</u> Date: <u>2/17/00</u>	
				SURVEYOR CERTIFICATION <i>I hereby certify that the well location shown on this plat was plotted from field notes of actual surveys made by me or under my supervision, and that the same is true and correct to the best of my belief.</i> Date Surveyed: <u>FEBRUARY 7, 2000</u> Signature & Seal of Professional Surveyor: <u>Ronald J. Eidson</u> Certificate No. <u>00-11-0188</u> RONALD J. EIDSON 3239 GARY EIDSON 12641 MACON McDONALD 12185	

BLOW OUT PREVENTER AND CHOKE MANIFOLD



10"/900 Cameron SS Space Saver
3000# Working Pressure
3000# Working Pressure Choke Manifold