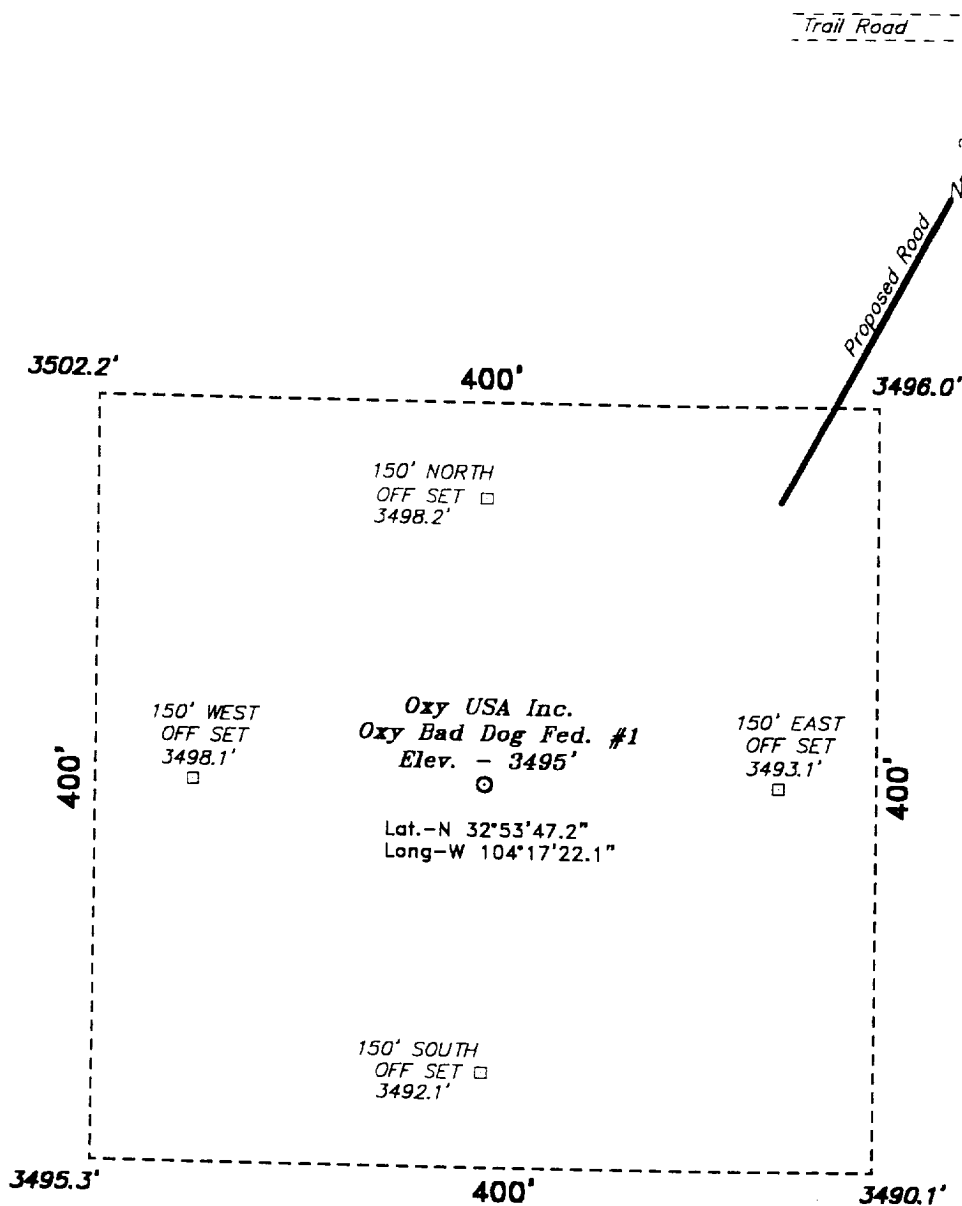


SECTION 28, TOWNSHIP 16 SOUTH, RANGE 27 EAST, N.M.P.M.,  
EDDY COUNTY, NEW MEXICO.



## Directions to Location:

FROM JUNCTION HWY 82 & CO. RD. 202, GO NORTH AROUND SUBSTATION AND NORTH ALONG DOUBLE POLE ELECTRIC LINE ON CO. RD. 202 FOR 2.8 MILES, THEN CONTINUE NORTHEAST ON CO. RD. 202 FOR 1.3 MILE TO A PROPOSED LINE STA. & A LEASE ROAD LEFT. ALONG A PROPOSED LINE TAKE LEASE ROAD NORTHWEST ALONG THE PIPELINE 3.5 MILES TO A LEASE ROAD LEFT, THEN TAKE LEASE ROAD LEFT, GO WEST 1.7 MILE TO A PROPOSED LEASE ROAD 2215 FEET NORTHEAST OF LOCATION.



SCALE: 1" = 100'

**Oxy USA Inc.**

REF: Oxy Bad Dog Federal No. 1 / Well Pad Topo

THE OXY BAD DOG FED. No. 1 LOCATED 1650' FROM  
THE NORTH LINE AND 990' FROM THE WEST LINE OF  
SECTION 28, TOWNSHIP 16 SOUTH, RANGE 27 EAST,  
N.M.P.M., EDDY COUNTY, NEW MEXICO.

**Basin Surveys** P.O. BOX 1786 - HOBBS, NEW MEXICO

W.O. Number: 0106

Drawn By: K. GOAD

Date: 02-24-2000 Disk: KJG #122 - 0106A.DWG

RECEIVED

APR 13 2000

BLM

ROOSEVELT, NM