

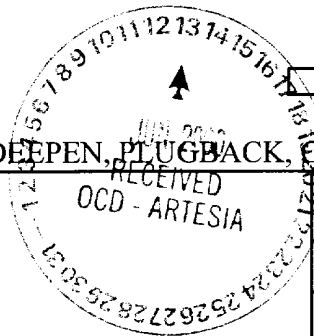
District I
PO Box 1980, Hobbs, NM 88241-1980
District I
811 South First, Artesia, NM 88210
District III
1000 Rio Brazos Rd., Aztec, NM 87410
District IV
2040 South Pacheco, Santa Fe, NM 87505

State of New Mexico
Minerals & Natural Resources Department

OIL CONSERVATION DIVISION
2040 South Pacheco
Santa Fe, NM 87505

Form C-101
Revised October 18, 1994
Instructions on back
Submit to Appropriate District Office
State Lease - 6 Copies
Fee Lease - 5 Copies

CLSF
B&W
St 6d
Op



AMENDED REPORT

APPLICATION FOR PERMIT TO DRILL, RE-ENTER, DEEPEN, PLUG BACK, OR ADD A ZONE

¹ Operator Name and Address. Louis Dreyfus Natural Gas Corporation 14000 Quail Springs Parkway, Suite 600 Oklahoma City, OK 73134		² OGRID Number 025773
		³ API Number 30-015-31184
⁴ Property Code 26069	⁵ Property Name Rio Ocho "26" State	⁶ Well No. 1

⁷ Surface Location

UL or lot no.	Section	Township	Range	Lot Idn	Feet from the	North/South line	Feet from the	East/West line	County
I	26	17S	28E		1700	South	880	East	Eddy

⁸ Proposed Bottom Hole Location If Different From Surface

UL or lot no.	Section	Township	Range	Lot Idn	Feet from the	North/South line	Feet from the	East/West line	County
⁹ Proposed Pool 1 Empire South (Morrow)					¹⁰ Proposed Pool 2				

¹¹ Work Type Code N	¹² Well Type Code G	¹³ Cable/Rotary R	¹⁴ Lease Type Code S	¹⁵ Ground Level Elevation 3658
¹⁶ Multiple N	¹⁷ Proposed Depth 10,900'	¹⁸ Formation Morrow	¹⁹ Contractor Patterson	²⁰ Spud Date 8/1/00

Minimum WOC time 18 hrs. ²¹ Proposed Casing and Cement Program

Hole Size	Casing Size	Casing weight/foot	Setting Depth	Sacks of Cement	Estimated TOC
17 1/2"	13 3/8"	54.5#	425'	450 sks	Surface
12 1/4"	9 5/8"	36#	2,000'	900 sks	Surface
8 3/4"	5 1/2"	17#	10,900'	2500 sks	Tie back to 9 5/8"

²² Describe the proposed program. If this application is to DEEPEN or PLUG BACK give the data on the present productive zone and proposed new productive zone. Describe the blowout prevention program, if any. Use additional sheets if necessary.

1. Drill 17 1/2" hole to \pm 425'. Run 13 3/8" csg. and cement to surface w/450 sks. cement.
2. Drill 12 1/4" hole to \pm 2,000'. Set 9 5/8" csg. and cement to surface w/900 sks cement.
3. Drill 8 3/4" hole to \pm 10,900'. Run 5 1/2" csg. and cement to 9 5/8" w/1300 sks cement.

See attached "Exhibit 6" for BOP assembly.

²³ I hereby certify that the information given above is true and complete to the best of my knowledge and belief.

Signature: Carla Christian

Printed name: Carla Christian

Title: Regulatory Technician

Date: 6/09/00

Phone: (405) 749-5263

OIL CONSERVATION DIVISION

Approved by: **ORIGINAL SIGNED BY TIM W. GUM** BGA

Title: **DISTRICT II SUPERVISOR**

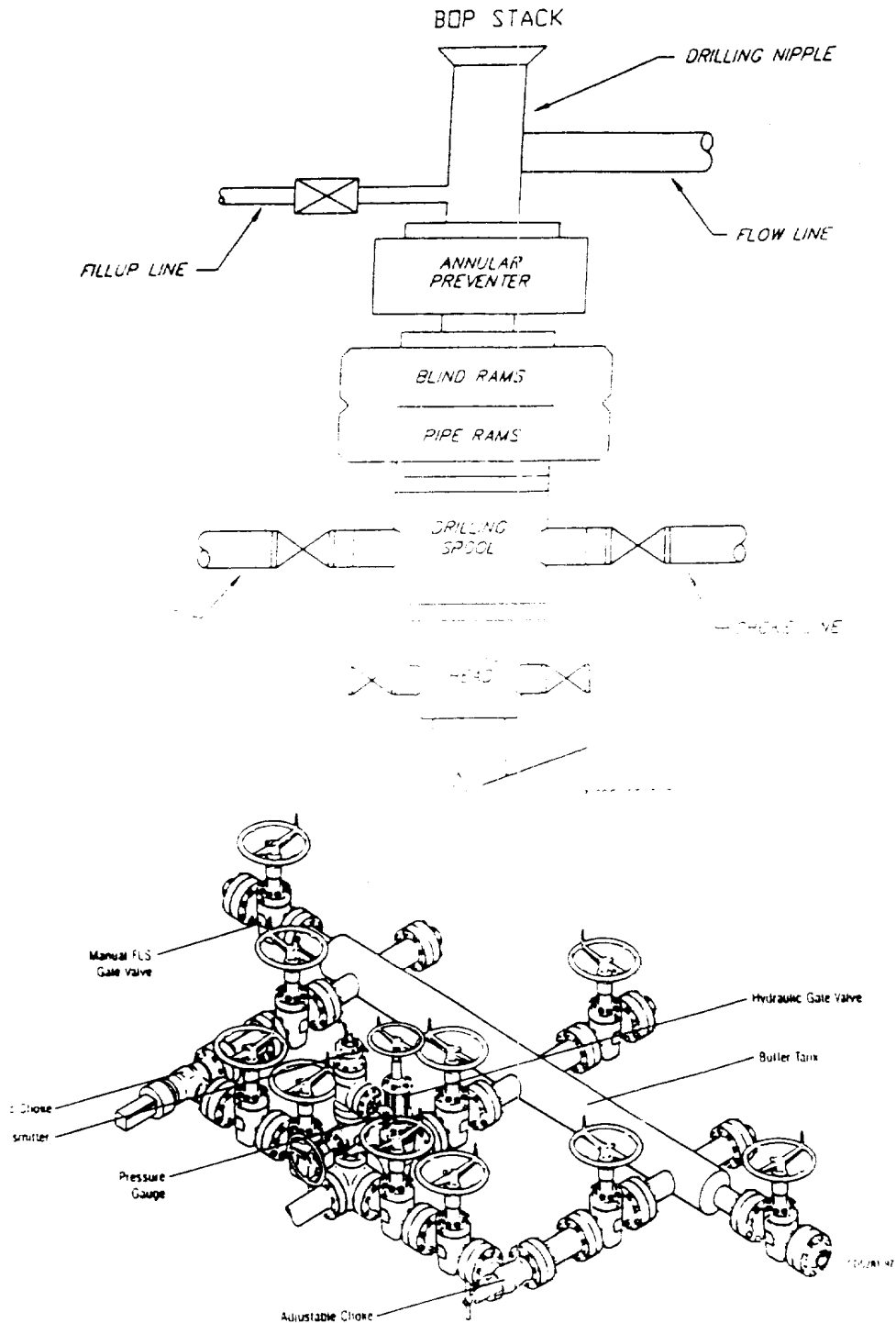
Approval Date: **JUN 13 2000**

Expiration Date: **JUN 13 2001**

Conditions of Approval :
Attached ☐

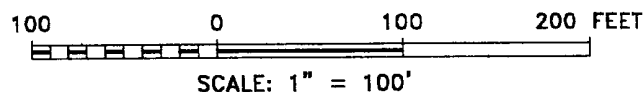
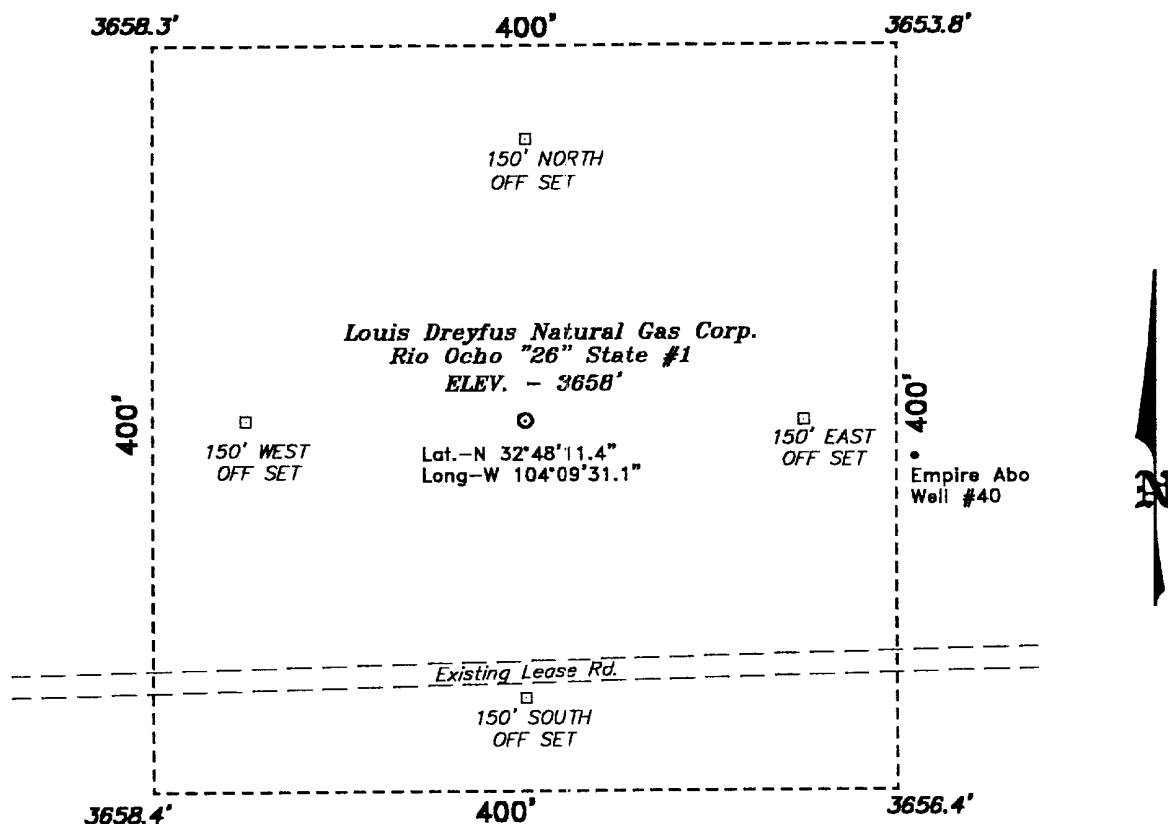
Exhibit 6

TYPICAL 5,000 p.s.i. BLOWOUT PREVENTER & CHOKE MANIFOLD SCHEMATIC



Typical Choke Manifold Designed for Land Drilling Applications

SECTION 26, TOWNSHIP 17 SOUTH, RANGE 28 EAST, N.M.P.M.,
EDDY COUNTY, NEW MEXICO.



Directions to Location:

FROM THE JUNCTION OF US HWY 82 AND STATE
HWY 360, GO EAST ON HWY 82 APPROX. 1.75 MILES
TO A POINT WHICH LIES APPROX. 500 FEET SOUTH
OF THE PROPOSED WELL LOCATION.

Louis Dreyfus Natural Gas Corp.

REF: Rio Ocho "26" State #1 / Well Pad Topo

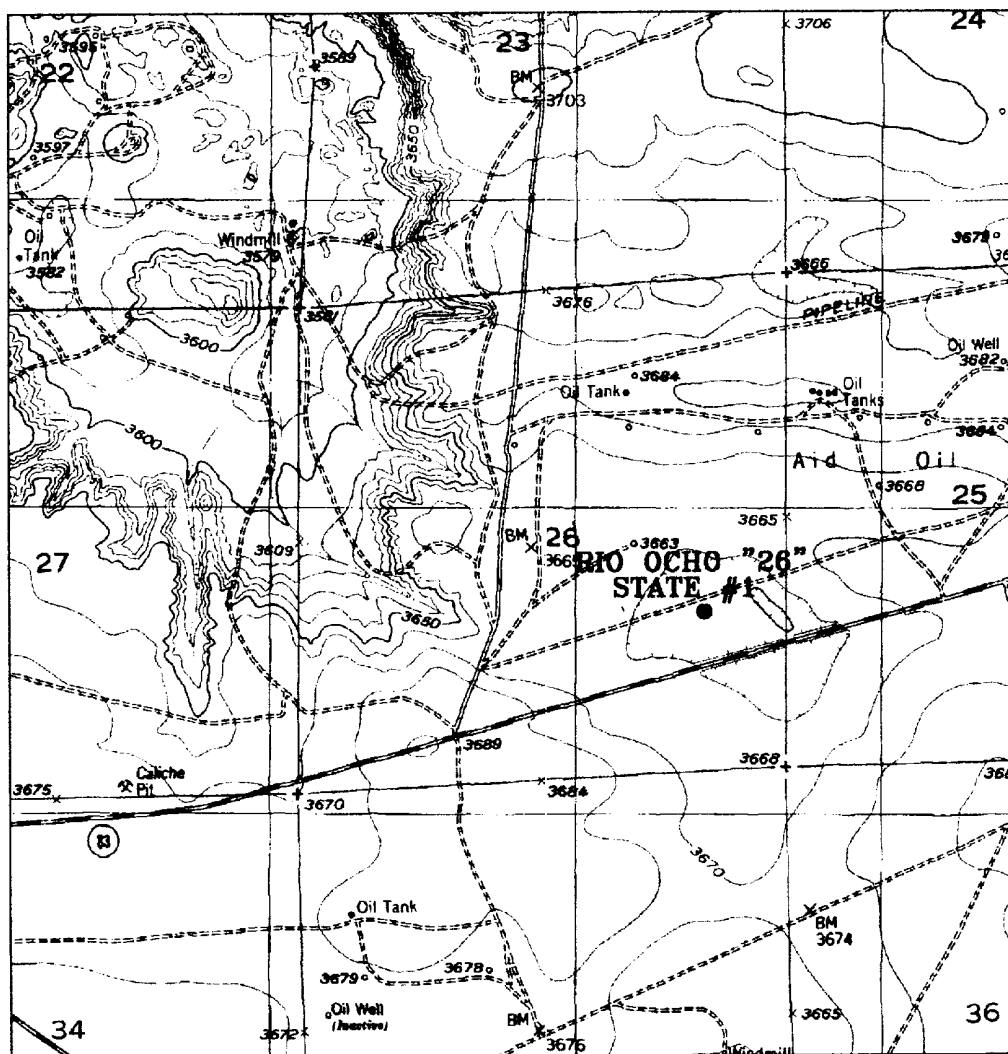
THE RIO OCHO "26" STATE No. 1 LOCATED 1700' FROM
THE SOUTH LINE AND 880' FROM THE EAST LINE OF
SECTION 26, TOWNSHIP 17 SOUTH, RANGE 28 EAST,
N.M.P.M., EDDY COUNTY, NEW MEXICO.

BASIN SURVEYS P.O. BOX 1786—HOBBS, NEW MEXICO

W.O. Number: 0279 Drawn By: **K. GOAD**

Date: 05-30-2000 Disk: KJG #122 — 0279A.DWG

Survey Date: 05-26-2000 Sheet 1 of 1 Sheets



RIO OCHO "26" STATE #1
 Located at 1700' FSL and 880' FEL
 Section 26, Township 17 South, Range 28 East,
 N.M.P.M., Eddy County, New Mexico.

basin
surveys

focused on excellence
 in the oilfield

P.O. Box 1786
 1120 N. West County Rd.
 Hobbs, New Mexico 88241
 (505) 393-7316 - Office
 (505) 392-3074 - Fax
 basin-surveys.com

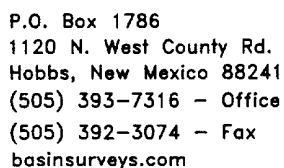
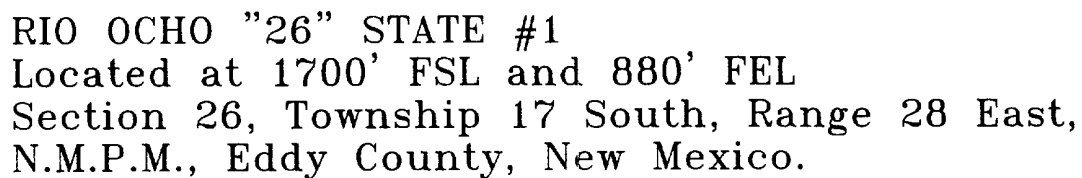
W.O. Number: 0279AA - KJG #122

Survey Date: 05-26-2000

Scale: 1" = 2000'

Date: 05-30-2000

LOUIS DREYFUS
NATURAL GAS
CORPORATION



Date: 05-30-2000

LOUIS DREYFUS
NATURAL GAS
CORPORATION