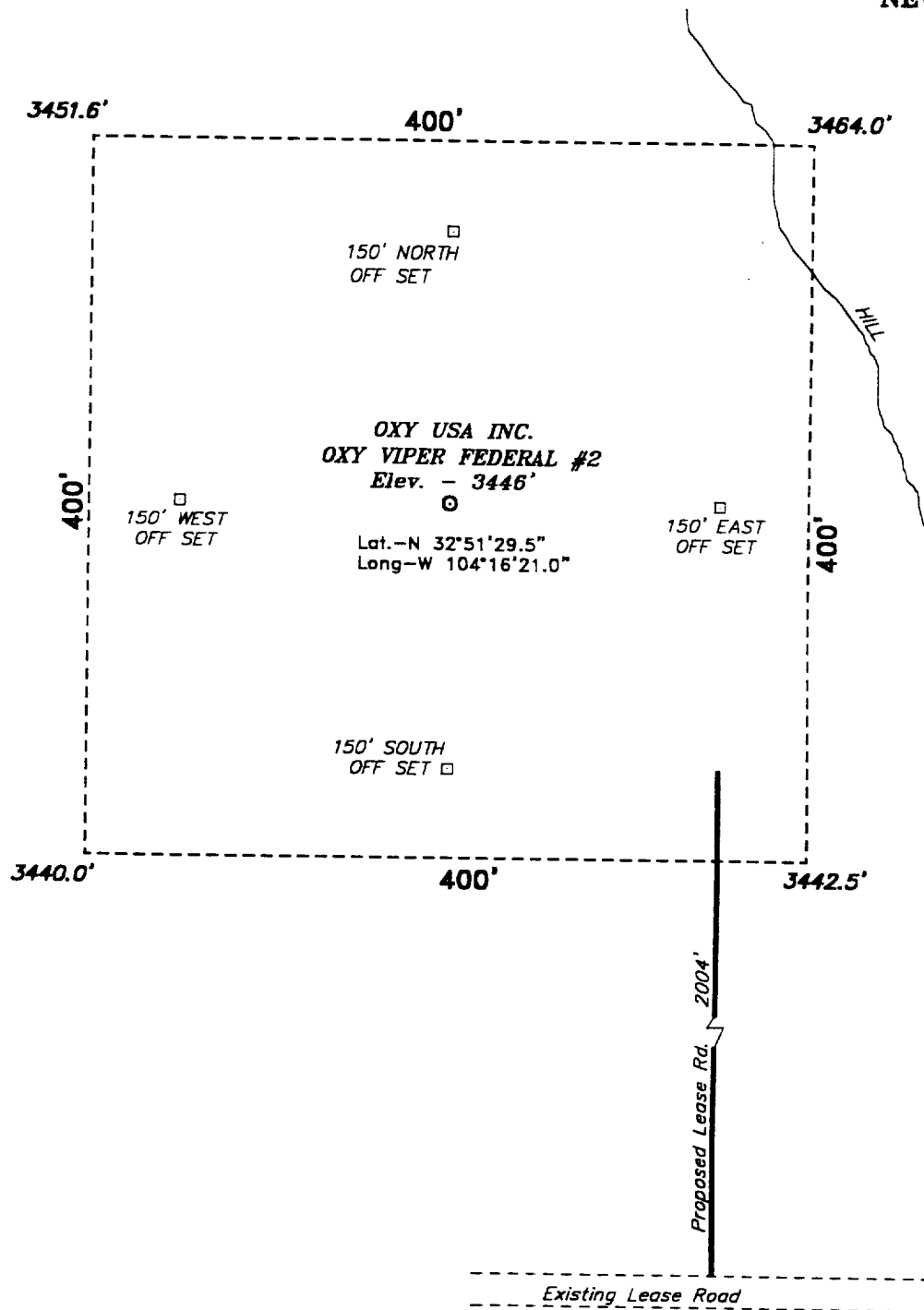
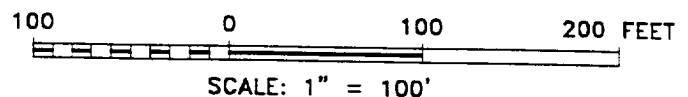


**SECTION 3, TOWNSHIP 17 SOUTH, RANGE 27 EAST, N.M.P.M.,
EDDY COUNTY, NEW MEXICO.**



Directions to Location:

FROM THE JUNCTION OF US HWY 82 AND CO. RD. 202, GO WEST ON HWY 82 APPROX. 2 MILES TO A LEASE ROAD; THENCE NORTH ON LEASE ROAD APPROX. 2 MILES TO A LEASE ROAD; THENCE WEST ON LEASE ROAD APPROX. 0.5 MILE TO THE PROPOSED LEASE ROAD WHICH LIES 2004 FEET FROM THE SOUTHEAST CORNER OF THE PROPOSED WELL LOCATION.



Oxy USA Inc.

REF: Oxy Viper Fed. No. 2 / Well Pad Topo

THE OXY VIPER FED. No. 2 LOCATED 660' FROM
THE SOUTH LINE AND 660' FROM THE WEST LINE OF
SECTION 3, TOWNSHIP 17 SOUTH, RANGE 27 EAST,
N.M.P.M., EDDY COUNTY, NEW MEXICO.

BASIN SURVEYS P.O. BOX 1786-HOBBS, NEW MEXICO

W.O. Number: 0145 Drawn By: **K. GOAD**

Date: 03-28-2000 Disk: KJG #122 - 0145A.DWG

Survey Date: 03-23-2000 Sheet 1 of 1 Sheets