

District I  
PO Box 1980, Hobbs, NM 88241-1980

District II  
811 South First, Artesia, NM 88210

District III  
1000 Rio Brazos Rd., Aztec, NM 87410

District IV  
2040 South Pacheco, Santa Fe, NM 87505

State of New Mexico  
Energy, Minerals & Natural Resources Department

OIL CONSERVATION DIVISION  
2040 South Pacheco  
Santa Fe, NM 87505

Form C-101  
Revised October 18, 1994  
Instructions on back  
Submit to Appropriate District Office  
State Lease - 6 Copies  
Free Lease - 5 Copies

RECEIVED  
OCD - ARTESIA

☐ AMENDED REPORT

APPLICATION FOR PERMIT TO DRILL, RE-ENTER, DEEPEN, PLUGBACK, OR ADD A ZONE

<sup>1</sup> Operator Name and Address MARBOB ENERGY CORPORATION P.O. BOX 227 ARTESIA, NM 88210		<sup>2</sup> OGRID Number 14049
		<sup>3</sup> API Number 30 - 0 15-31390
<sup>4</sup> Property Code 25375	<sup>5</sup> Property Name "D" STATE	<sup>6</sup> Well No. 224

<sup>7</sup>Surface Location

UL or lot no.	Section	Township	Range	Lot Idn	Feet from the	North/South line	Feet from the	East/West Line	County
O	25	17S	28E		990	SOUTH	1650	EAST	EDDY

<sup>8</sup>Proposed Bottom Hole Location If Different From Surface

UL or lot no.	Section	Township	Range	Lot Idn	Feet from the	North/South line	Feet from the	East/West Line	County
<sup>9</sup> Proposed Pool 1 ARTESIA GLORIETTA YESO					<sup>10</sup> Proposed Pool 2				

<sup>11</sup> Work Type Code N	<sup>12</sup> Well Type Code O	<sup>13</sup> Cable/Rotary R	<sup>14</sup> Lease Type Code S	<sup>15</sup> Ground Level Elevation 3675
<sup>16</sup> Multiple No	<sup>17</sup> Proposed Depth 4700	<sup>18</sup> Formation YESO	<sup>19</sup> Contractor L&R	<sup>20</sup> Spud Date 11-18-00

<sup>21</sup>Proposed Casing and Cement Program

Hole Size	Casing Size	Casing weight/foot	Setting Depth	Sacks of Cement	Estimated TOC
12 1/4"	8 5/8"	24#	@ 400' 500'	300 SX	<del>200' ABOVE ALL KNOWN</del> CIRC Surface
7 7/8"	5 1/2"	17#	4700'	600 SX	SUFFICIENT TO COVER
					200' ABOVE ALL KNOWN
					OIL AND GAS HORIZONS

<sup>22</sup>Describe the proposed program. If this application is to DEEPEN or PLUG BACK give the data on the present productive zone and proposed new productive zone. Describe the blowout prevention program, if any. Use additional sheets if necessary.

DRILL TO 500', RUN & CMT 8 5/8" CSG, REDUCE HOLE & DRILL TO 4700', RUN & CMT 5 1/2" CSG, PUT WELL ON PRODUCTION

<sup>23</sup>I hereby certify that the information given above is true and complete to the best of my knowledge and belief.

Signature:

Robin Cockrum

Printed name:

ROBIN COCKRUM

Title:

PRODUCTION ANALYST

Date:

10-18-00

Phone:

748-3303

OIL CONSERVATION DIVISION

Approved By:

ORIGINAL SIGNED BY TIM W. GUM  
DISTRICT II SUPERVISOR

Title:

Approval Date:

OCT 20 2000

Expiration Date:

OCT 20 2001

Conditions of Approval:

Attached: ☐

DISTRICT I  
P.O. Box 1980, Hobbs, NM 88241-1980

State of New Mexico  
Energy, Minerals and Natural Resources Department

Form C-102  
Revised February 10, 1994  
Submit to Appropriate District Office  
State Lease - 4 Copies  
Fee Lease - 3 Copies

DISTRICT II  
P.O. Drawer 88, Artesia, NM 88211-0719

DISTRICT III  
1000 Rio Brazos Rd., Artec, NM 87410

## OIL CONSERVATION DIVISION

P.O. Box 2088  
Santa Fe, New Mexico 87504-2088

DISTRICT IV  
P.O. Box 2088, Santa Fe, NM 87504-2088

☐ AMENDED REPORT

### WELL LOCATION AND ACREAGE DEDICATION PLAT

API Number	Pool Code 96830	Pool Name ARTESIA GLORIETTA YESO
Property Code 25375	Property Name "D" STATE	Well Number 24
OGRID No. 14049	Operator Name MARBOB ENERGY CORPORATION	Elevation 3675

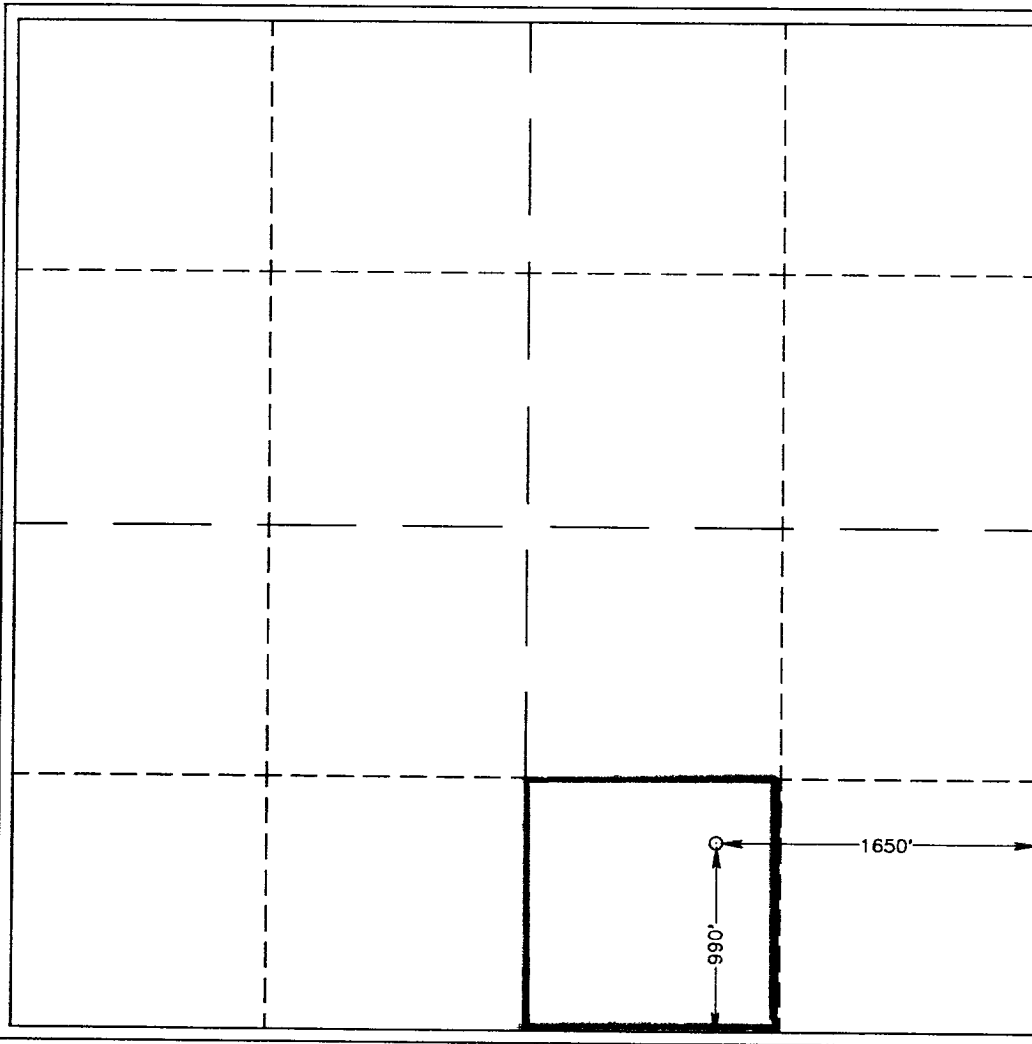

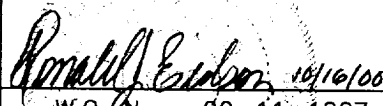
#### Surface Location

UL or lot No. 0	Section 25	Township 17 S	Range 28 E	Lot Idn	Feet from the 990	North/South line SOUTH	Feet from the 1650	East/West line EAST	County EDDY
--------------------	---------------	------------------	---------------	---------	----------------------	---------------------------	-----------------------	------------------------	----------------

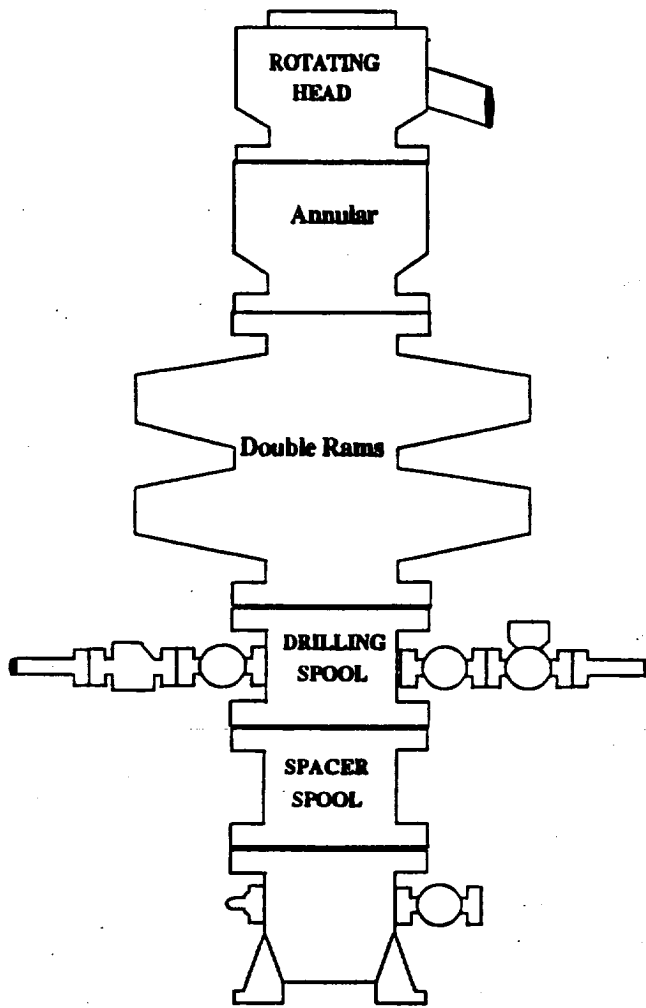
#### Bottom Hole Location If Different From Surface

UL or lot No.	Section	Township	Range	Lot Idn	Feet from the	North/South line	Feet from the	East/West line	County
Dedicated Acres 40	Joint or Infill	Consolidation Code	Order No.						

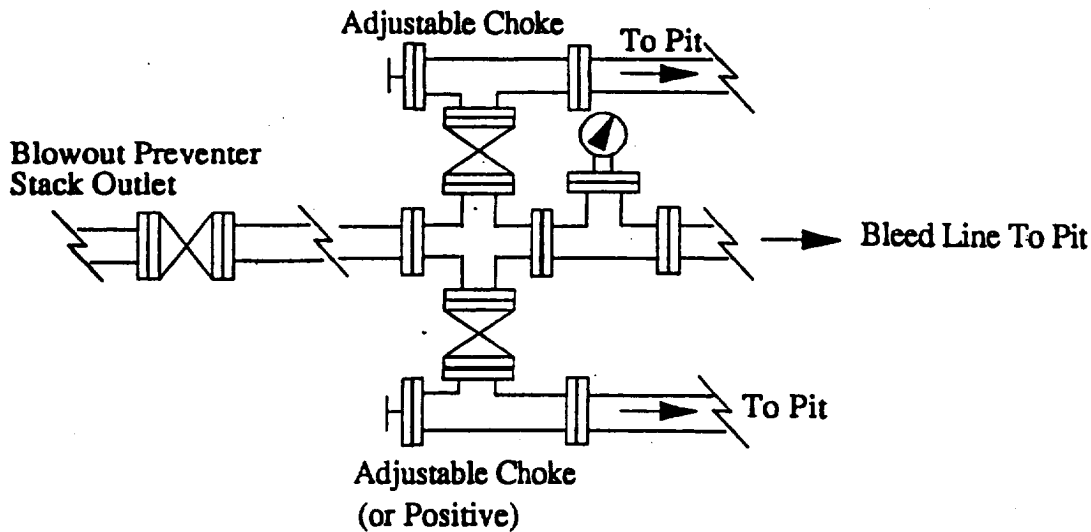
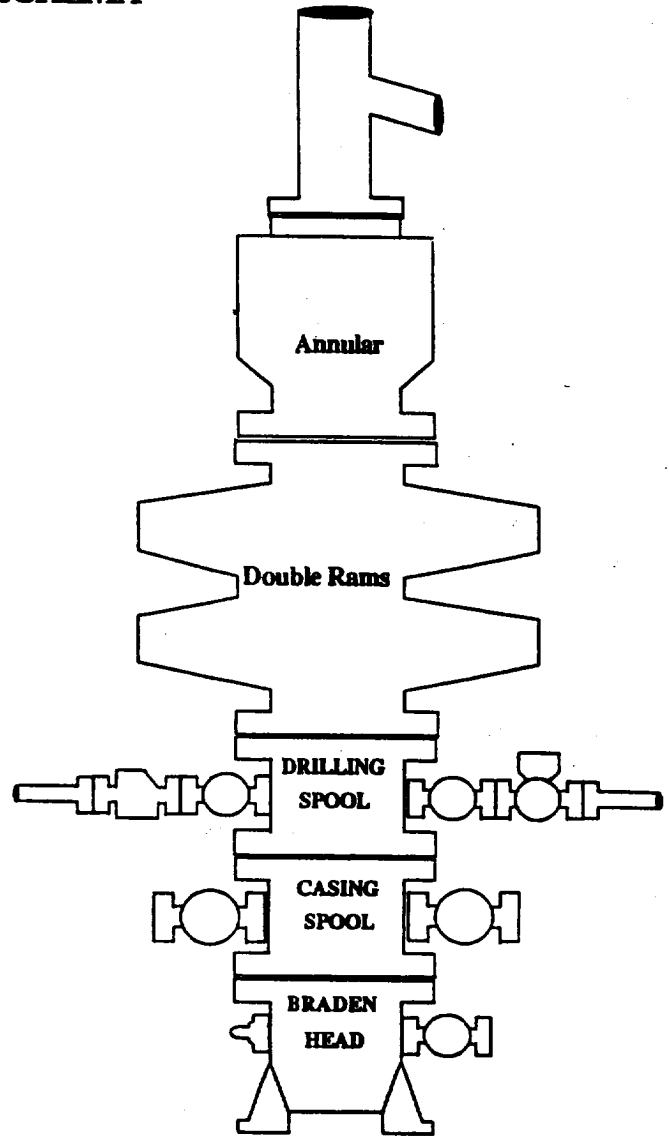
NO ALLOWABLE WILL BE ASSIGNED TO THIS COMPLETION UNTIL ALL INTERESTS HAVE BEEN CONSOLIDATED  
OR A NON-STANDARD UNIT HAS BEEN APPROVED BY THE DIVISION

	<b>OPERATOR CERTIFICATION</b>  <i>I hereby certify the the information contained herein is true and complete to the best of my knowledge and belief.</i>   Signature ROBIN COCKRUM Printed Name PRODUCTION ANALYST Title 10/18/00 Date
	<b>SURVEYOR CERTIFICATION</b>  <i>I hereby certify that the well location shown on this plat was plotted from field notes of actual surveys made by me or under my supervision, and that the same is true and correct to the best of my belief.</i>  OCTOBER 10, 2000 Date Surveyed Signature & Seal of Professional Surveyor  W.O. Num. 00-11-1207 Certificate No. RONALD J. EIDSON, 3239 GARY G. EIDSON, 12641

# BOPE SCHEMA

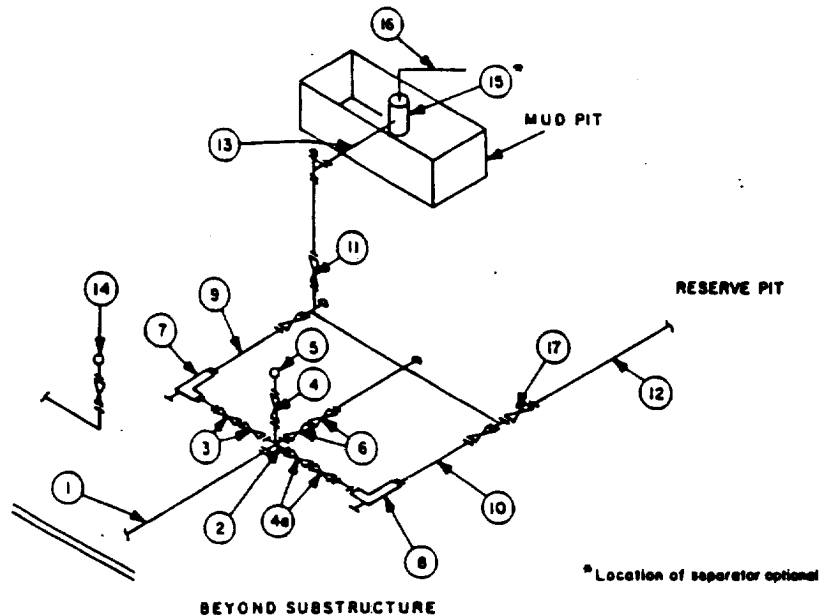


**Choke Manifold**



**MINIMUM CHOKE MANIFOLD**  
3,000, 5,000 and 10,000 PSI Working Pressure

**3 MWP - 5 MWP - 10 MWP**



MINIMUM REQUIREMENTS										
No.		3,000 MWP			5,000 MWP			10,000 MWP		
		I.D.	NOMINAL	RATING	I.D.	NOMINAL	RATING	I.D.	NOMINAL	RATING
1	Line from drilling spool		3"	3,000		3"	5,000		3"	10,000
2	Cross 3"x3"x3"x2"			3,000			5,000			
	Cross 3"x3"x3"x3"									10,000
3	Valves(1) Gate <input type="checkbox"/> Plug <input type="checkbox"/> (2)	3-1/8"		3,000	3-1/8"		5,000	3-1/8"		10,000
4	Valve Gate <input type="checkbox"/> Plug <input type="checkbox"/> (2)	1-13/16"		3,000	1-13/16"		5,000	1-13/16"		10,000
4a	Valves(1)	2-1/16"		3,000	2-1/16"		5,000	3-1/8"		10,000
5	Pressure Gauge			3,000			5,000			10,000
6	Valves Gate <input type="checkbox"/> Plug <input type="checkbox"/> (2)	3-1/8"		3,000	3-1/8"		5,000	3-1/8"		10,000
7	Adjustable Choke(3)	2"		3,000	2"		5,000	2"		10,000
8	Adjustable Choke	1"		3,000	1"		5,000	2"		10,000
9	Line		3"	3,000		3"	5,000		3"	10,000
10	Line		2"	3,000		2"	5,000		3"	10,000
11	Valves Gate <input type="checkbox"/> Plug <input type="checkbox"/> (2)	3-1/8"		3,000	3-1/8"		5,000	3-1/8"		10,000
12	Lines		3"	1,000		3"	1,000		3"	2,000
13	Lines		3"	1,000		3"	1,000		3"	2,000
14	Remote reading compound standpipe pressure gauge			3,000			5,000			10,000
15	Gas Separator		2'x5'			2'x5'			2'x5'	
16	Line		4"	1,000		4"	1,000		4"	2,000
17	Valves Gate <input type="checkbox"/> Plug <input type="checkbox"/> (2)	3-1/8"		3,000	3-1/8"		5,000	3-1/8"		10,000

(1) Only one required in Class 3M.

(2) Gate valves only shall be used for Class 10M.

(3) Remote operated hydraulic choke required on 5,000 psi and 10,000 psi for drilling.

**EQUIPMENT SPECIFICATIONS AND INSTALLATION INSTRUCTIONS**

- All connections in choke manifold shall be welded, studded, flanged or Cameron clamp of comparable rating.
- All flanges shall be API 6B or 6BX and ring gaskets shall be API RX or BX. Use only BX for 10 MWP.
- All lines shall be securely anchored.
- Chokes shall be equipped with tungsten carbide seats and needles, and replacements shall be available.
- Choke manifold pressure and standpipe pressure gauges shall be available at the choke manifold to assist in regulating chokes. As an alternate with automatic chokes, a choke manifold pressure gauge shall be located on the rig floor in conjunction with the standpipe pressure gauge.
- Line from drilling spool to choke manifold should be as straight as possible. Lines downstream from chokes shall make turns by large bends or 90° bends using bull plugged tees.