

District I
1625 N. French Dr., Hobbs, NM 88240
District II
811 South First, Artesia, NM 88210
District III
1000 Rio Brazos Road, Aztec, NM 87410
District IV
2040 South Pacheco, Santa Fe, NM 87505

State of New Mexico
Energy Minerals and Natural Resources

Oil Conservation Division
2040 South Pacheco
Santa Fe, NM 87505

Form C-101
Revised March 17, 1999

Submit to appropriate District Office
State Lease - 6 Copies
Fee Lease - 5 Copies

RECEIVED
OCD ARTESIA

AMENDED REPORT

APPLICATION FOR PERMIT TO DRILL, RE-ENTER, DEEPEN, PLUGBACK, OR ADD A ZONE

¹ Operator Name and Address Melrose Operating Co. c/o P.O. Box 953, Midland, TX 79702		² OGRID Number 184860
³ Property Code 26081		⁴ API Number 30 - 015 - 31462
⁵ Property Name Artesia Unit		⁶ Well No. 80

⁷ Surface Location

UL or lot no.	Section	Township	Range	Lot Idn	Feet from the	North/South line	Feet from the	East/West line	County
J	34	17S	28E		1770	South	2310	East	Eddy

⁸ Proposed Bottom Hole Location If Different From Surface

UL or lot no.	Section	Township	Range	Lot Idn	Feet from the	North/South line	Feet from the	East/West line	County

⁹ Proposed Pool 1 Artesia, Queen-Grayburg-San Andres (03230)	¹⁰ Proposed Pool 2
--	-------------------------------

¹¹ Work Type Code N	¹² Well Type Code 0	¹³ Cable/Rotary R	¹⁴ Lease Type Code S	¹⁵ Ground Level Elevation 3666'
¹⁶ Multiple No	¹⁷ Proposed Depth 3500'	¹⁸ Formation San Andres	¹⁹ Contractor United Drllg.	²⁰ Spud Date 01/01

Minimum WOC time 18 hrs. ²¹ Proposed Casing and Cement Program

Hole Size	Casing Size	Casing weight/foot	Setting Depth	Sacks of Cement	Estimated TOC
12 1/4"	8 5/8"	24#	300' 45c'	275 sx	Surface
7 7/8"	4 1/2"-5 1/2"	9.5 - 17#	3500'	600 sx	Surface

²² Describe the proposed program. If this application is to DEEPEN or PLUG BACK, give the data on the present productive zone and proposed new productive zone.

Describe the blowout prevention program, if any. Use additional sheets if necessary.

Propose to drill 12 1/4" hole to 300', set 8 5/8" casing to 300', cement with 275 sx C1 C circulating to surface. Drill 7 7/8" hole to 3500', run open hole logs, set 4 1/2"-5 1/2" casing to total depth, cementing w/600 sx C1 C, circulating to surface. Will perforate & stimulate. Test.

²³ I hereby certify that the information given above is true and complete to the best of my knowledge and belief.

Signature:

Printed name: Ann E. Ritchie

Title: Regulatory Agent

Date: 11-14-00

Phone: 915 684-6381

OIL CONSERVATION DIVISION

Approved by:

ORIGINAL SIGNED BY TIM W. GUM
DISTRICT II SUPERVISOR

Title:

Approval Date: NOV 19 2000

Expiration Date: NOV 19 2001

Conditions of Approval:

Attached ☐

DISTRICT I
P.O. Box 1980, Hobbs, NM 88241-1980

State of New Mexico
Energy, Minerals and Natural Resources Department

Form C-102
Revised February 10, 1994
Submit to Appropriate District Office
State Lease - 4 Copies
Fee Lease - 3 Copies

DISTRICT II
P.O. Drawer DD, Artesia, NM 88211-0719

DISTRICT III
1000 Rio Brazos Rd., Aztec, NM 87410

DISTRICT IV
P.O. BOX 2088, SANTA FE, N.M. 87504-2088

OIL CONSERVATION DIVISION

P.O. Box 2088
Santa Fe, New Mexico 87504-2088

☐ AMENDED REPORT

WELL LOCATION AND ACREAGE DEDICATION PLAT

API Number	Pool Code 03230	Pool Name Artesia, Queen-Grayburg-San Andres
Property Code	Property Name ARTESIA UNIT	Well Number 80
OGRID No. 184860	Operator Name Melrose Operating Co.	Elevation 3666'

Surface Location

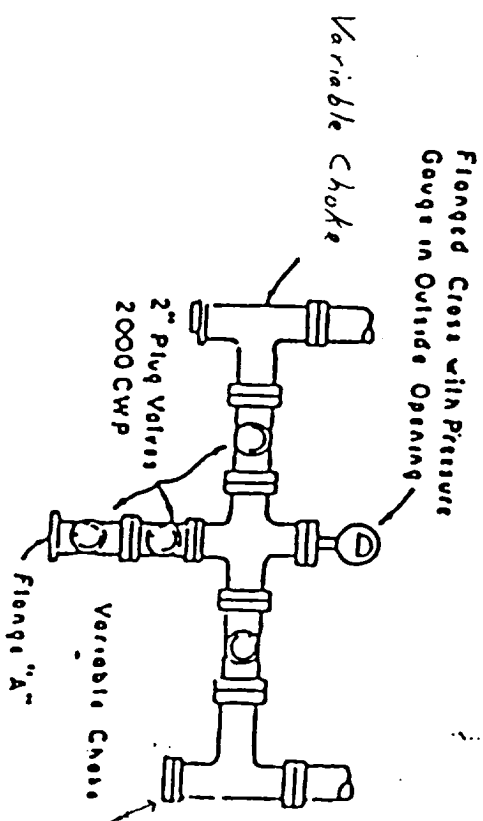
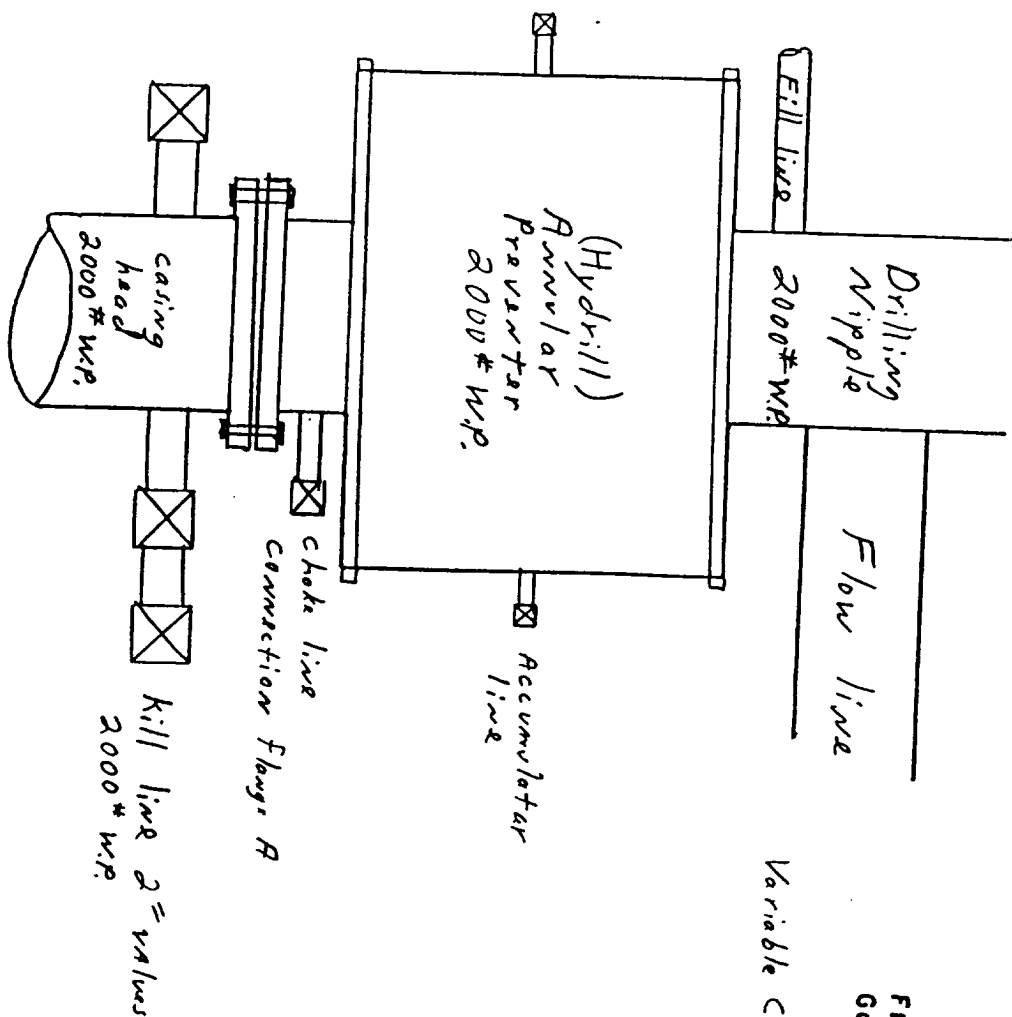
UL or lot No. J	Section 34	Township 17 S	Range 28 E	Lot Idn	Feet from the 1770	North/South line SOUTH	Feet from the 2310	East/West line EAST	County EDDY
--------------------	---------------	------------------	---------------	---------	-----------------------	---------------------------	-----------------------	------------------------	----------------

Bottom Hole Location If Different From Surface

UL or lot No.	Section	Township	Range	Lot Idn	Feet from the	North/South line	Feet from the	East/West line	County
Dedicated Acres 40	Joint or Infill <input checked="" type="checkbox"/>	Consolidation Code	Order No.						

NO ALLOWABLE WILL BE ASSIGNED TO THIS COMPLETION UNTIL ALL INTERESTS HAVE BEEN CONSOLIDATED
OR A NON-STANDARD UNIT HAS BEEN APPROVED BY THE DIVISION

				OPERATOR CERTIFICATION I hereby certify the information contained herein is true and complete to the best of my knowledge and belief. Signature Ann E. Ritchie Printed Name Regulatory Agent Title 11-14-00 915 684-6381 Date	
				SURVEYOR CERTIFICATION I hereby certify that the well location shown on this plat was plotted from field notes of actual surveys made by me or under my supervision, and that the same is true and correct to the best of my belief. MARCH 12, 1998 Date Surveyed Signature & Seal of Professional Surveyor Certificate No. RONALD J. EDSON 3239 GARY EDSON 12641	



PLAN VIEW-CHOKE MANIFOLD