

District I  
PO Box 1980, Hobbs, NM 88241-1980

District II  
811 South First, Artesia, NM 88210

District III  
1000 Rio Brazos Rd., Aztec, NM 87410

District IV  
2040 South Pacheco, Santa Fe, NM 87505

State of New Mexico  
Energy, Minerals & Natural Resources Department

OIL CONSERVATION DIVISION  
2040 South Pacheco  
Santa Fe, NM 87505

Form C-101  
Revised October 18, 1994  
Instructions on back  
Submit to Appropriate District Office  
State Lease - 6 Copies  
Fee Lease - 5 Copies

AMENDED REPORT

APPLICATION FOR PERMIT TO DRILL, RE-ENTER, DEEPEN, PLUGBACK OR ADD A ZONE

Operator Name and Address SDX Resources, Inc. PO Box 5061 Midland, TX 79704 915/685-1761		OGRID Number 020451
Property Code 26975		API Number 30 - 0 15-31482
Property Name Boggy State		Well No. 1

Surface Location

UL or lot no.	Section	Township	Range	Lot Idn	Feet from the	North/South line	Feet from the	East/West Line	County
P	36	17S	26E		330	South	500	East	Eddy

Proposed Bottom Hole Location If Different From Surface

UL or lot no.	Section	Township	Range	Lot Idn	Feet from the	North/South line	Feet from the	East/West Line	County	
UNDES Red Lake QN-GB-SA						9Proposed Pool 1				10Proposed Pool 2

Work Type Code N	Well Type Code O	Cable/Rotary R	Lease Type Code P	Ground Level Elevation 3337
Multiple No	Proposed Depth 3500	Formation QN-GB-SA	Contractor United Drlg	Spud Date 12-01-00

Proposed Casing and Cement Program

Hole Size	Casing Size	Casing weight/foot	Setting Depth	Sacks of Cement	Estimated TOC
12-1/4"	8-5/8"	24#	1250	375 Lite 200 C	surf
7-7/8"	5-1/2"	14#	3500	600 POZ C	surf

Describe the proposed program. If this application is to DEEPEN or PLUG BACK give the data on the present productive zone and proposed new productive zone. Describe the blowout prevention program, if any. Use additional sheets if necessary.

Plan to drill a 12-1/4" hole to appx 1250' & set 8-5/8" surf csg to 1250'. Cmt w/375 sx 12.8#/gal Lite + 200 sx CI C cmt. Circ. Drill 7-7/8" hole to TD (3500'). Run OH logs. Run 5-1/2" csg & circ POZ CI C cmt. Perf the GB-SA zone & stimulate as necessary for optimum production.

WOC 18 HOURS OR FOLLOW OPTION 2  
PER RULE 107

I hereby certify that the information given above is true and complete to the best of my knowledge and belief.

Signature: Bonnie Atwater

Printed name: Bonnie Atwater

Title: Regulatory Tech 11/27/00

OIL C

Approved By: ORIGINAL SIGNED BY TIM W. GUM B6A  
DISTRICT II SUPERVISOR

Title:

Approval Date: NOV 29 2000 Expiration Date: NOV 29 2001

OPERATOR TO NOTIFY OCD SPUD & TIME  
TO WITNESS CEMENTING 8 5/8"

DISTRICT I  
P.O. Box 1980, Hobbs, NM 88241-1980

State of New Mexico

Energy, Minerals and Natural Resources Department

Form C-102  
Revised February 10, 1994  
Submit to Appropriate District Office  
State Lease - 4 Copies  
Fee Lease - 3 Copies

DISTRICT II  
P.O. Drawer DD, Artesia, NM 88211-0719

DISTRICT III  
1000 Rio Braxos Rd., Artesia, NM 87410

DISTRICT IV  
P.O. Box 2088, Santa Fe, NM 87504-2088

OIL CONSERVATION DIVISION

P.O. Box 2088

Santa Fe, New Mexico 87504-2088

☐ AMENDED REPORT

WELL LOCATION AND ACREAGE DEDICATION PLAT

API Number	Pool Code	Pool Name
	51300	Red Lake QN-GB-SA
Property Code	Property Name	Well Number
	BOGGY STATE	1
OGRID No.	Operator Name	Elevation
020451	SDX RESOURCES, INC.	3337

Surface Location

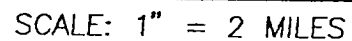
UL or lot No.	Section	Township	Range	Lot Idn	Feet from the	North/South line	Feet from the	East/West line	County
P	36	17 S	26 E		330	SOUTH	500	EAST	EDDY

Bottom Hole Location If Different From Surface

UL or lot No.	Section	Township	Range	Lot Idn	Feet from the	North/South line	Feet from the	East/West line	County
Dedicated Acres	Joint or Infill	Consolidation Code	Order No.						
40									

NO ALLOWABLE WILL BE ASSIGNED TO THIS COMPLETION UNTIL ALL INTERESTS HAVE BEEN CONSOLIDATED  
OR A NON-STANDARD UNIT HAS BEEN APPROVED BY THE DIVISION

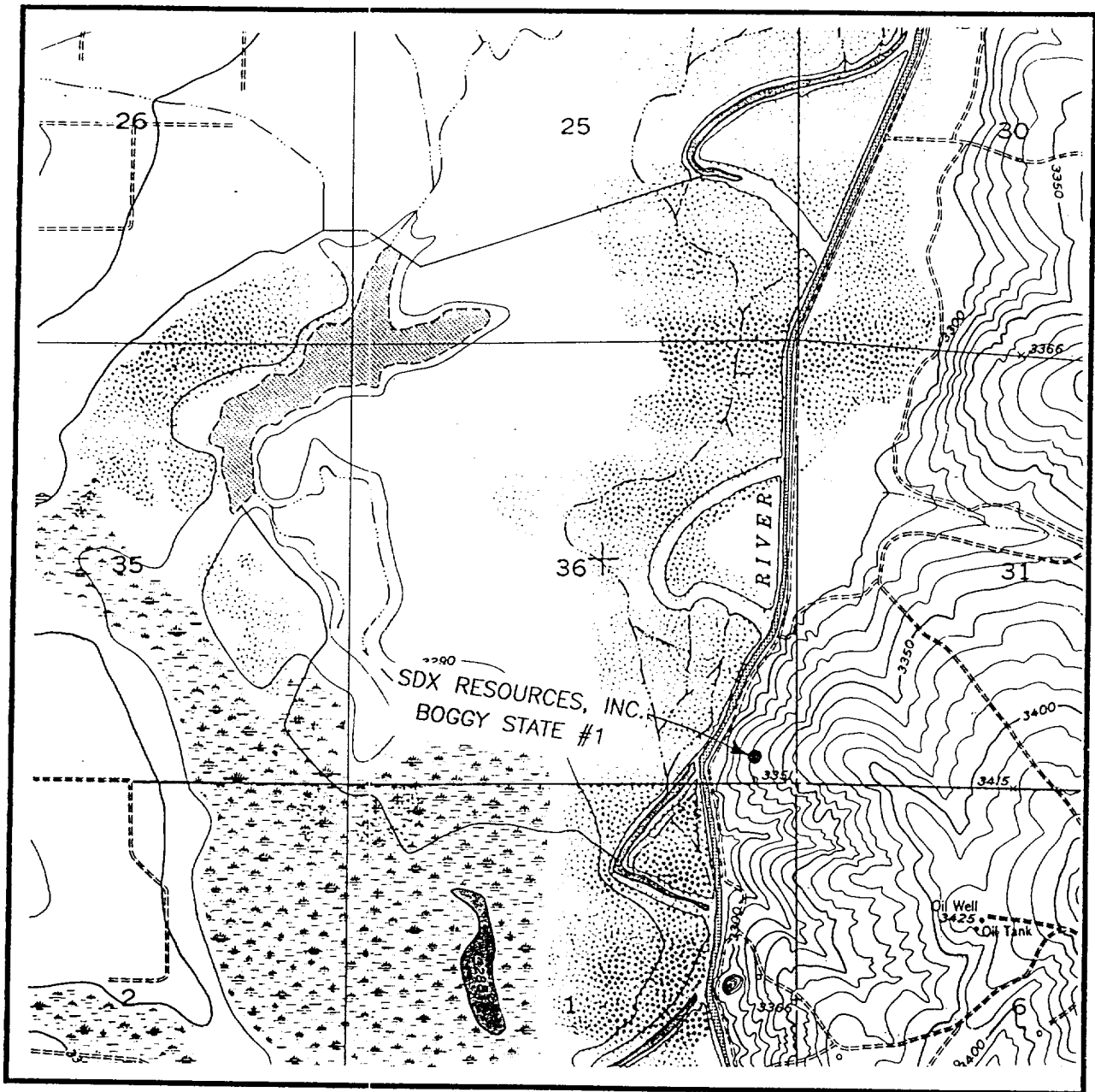
	<b>OPERATOR CERTIFICATION</b>  I hereby certify the the information contained herein is true and complete to the best of my knowledge and belief.  <u>Bonnie Atwater</u> Signature Bonnie Atwater Printed Name Regulatory Tech Title 11/27/00 Date
	<b>SURVEYOR CERTIFICATION</b>  I hereby certify that the well location shown on this plat was plotted from field notes of actual surveys made by me or under my supervision and that the same is true and correct to the best of my belief.  OCTOBER 21, 2000 Date Surveyed Signature & Seal of Professional Surveyor <u>Ronald J. Eidson</u> 10/24/00 W.O. Num. 00-11-1310 Certificate No. RONALD J. EIDSON, 3239 GARY G. EIDSON, 12641



LEASE BOGGY STATE

**JOHN WEST SURVEYING  
HOBBS, NEW MEXICO  
(505) 393-3117**

# LOCATION VERIFICATION MAP



SCALE: 1" = 2000'

CONTOUR INTERVAL - 10'

SEC. 36 TWP. 17-S RGE. 26-E

SURVEY N.M.P.M.

COUNTY EDDY

DESCRIPTION 330' FSL & 500' FEL

ELEVATION 3337

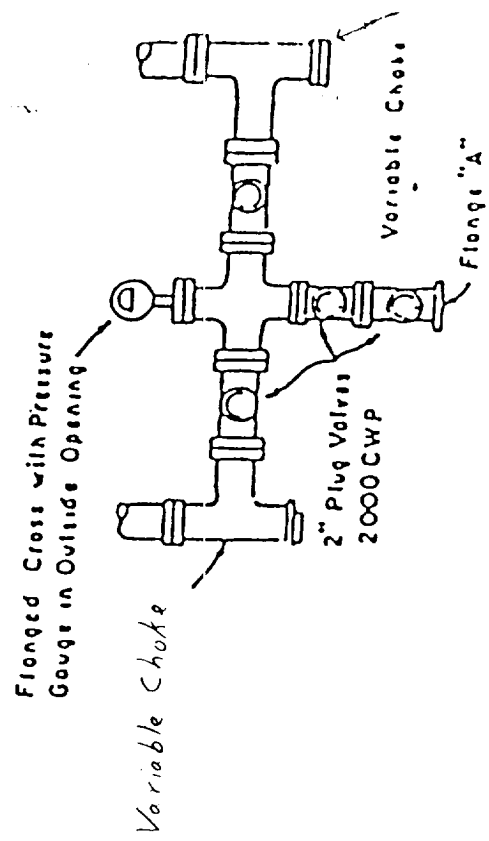
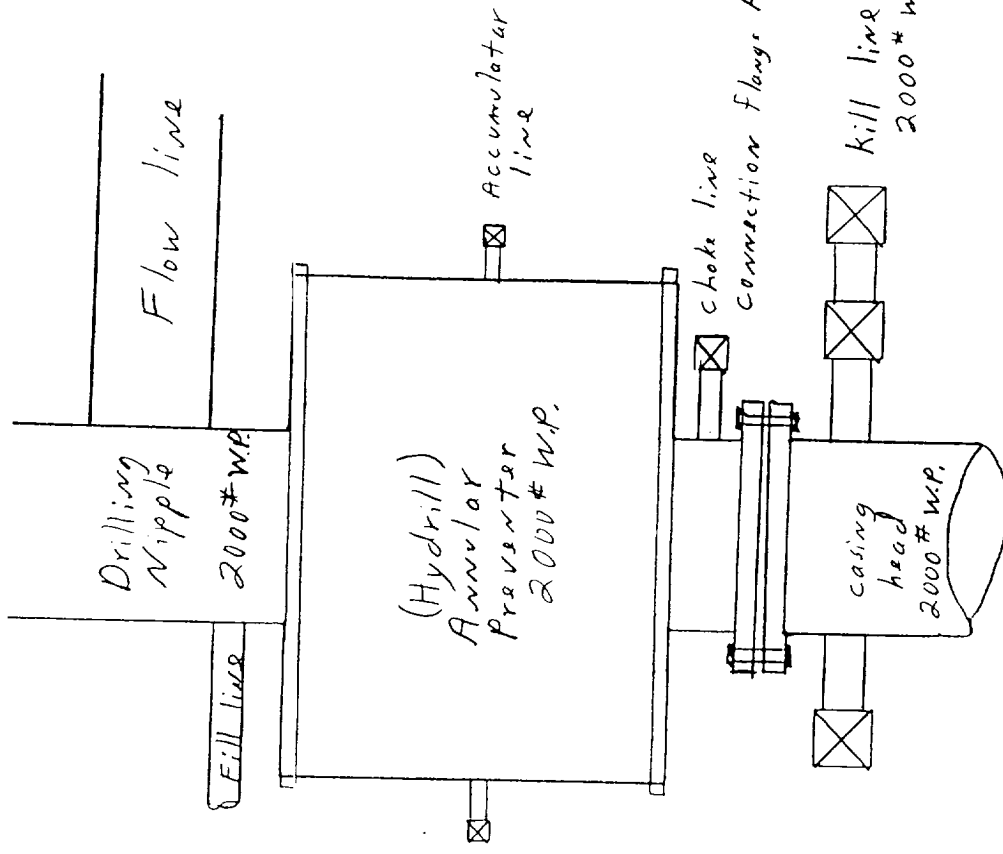
OPERATOR SDX RESOURCES, INC.

LEASE BOGGY STATE

U.S.G.S. TOPOGRAPHIC MAP

SPRING LAKE, N.M.

**JOHN WEST SURVEYING**  
**HOBBS, NEW MEXICO**  
**(505) 393-3117**



PLAN VIEW - CHOKE MANIFOLD