

District I  
1625 N. French Dr., Hobbs, NM 88240  
District II  
811 South First, Artesia, NM 88210  
District III  
1000 Rio Brazos Road, Aztec, NM 87410  
District IV  
2040 South Pacheco, Santa Fe, NM 87505

State of New Mexico  
Energy Minerals and Natural Resources

Oil Conservation Division  
2040 South Pacheco  
Santa Fe, NM 87505

Form C-101  
Revised March 17, 1999

Submit to appropriate District Office  
State Lease - 6 Copies  
Fee Lease - 5 Copies

☐ AMENDED REPORT

APPLICATION FOR PERMIT TO DRILL, RE-ENTER, DEEPEN, PLUGBACK, OR ADD A ZONE

Operator Name and Address Melrose Operating Co. c/o P.O. Box 953, Midland, TX 79702		OGRID Number 184860
Property Code 26081		API Number 30 - 015 - 31488
Property Name Artesia Unit		Well No. 88

Surface Location

UL or lot no.	Section	Township	Range	Lot Idn	Feet from the	North/South line	Feet from the	East/West line	County
K	35	17S	28E		1485	South	2475	West	Eddy

Proposed Bottom Hole Location If Different From Surface

UL or lot no.	Section	Township	Range	Lot Idn	Feet from the	North/South line	Feet from the	East/West line	County

Proposed Pool 1 Artesia, Queen-Grayburg-San Andres (03230)	Proposed Pool 2
---	-----------------

Work Type Code N	Well Type Code 0	Cable/Rotary R	Lease Type Code S	Ground Level Elevation 3670'
Multiple No	Proposed Depth 3500'	Formation San Andres	Contractor United Drilg.	Spud Date 01/01

Proposed Casing and Cement Program

Hole Size	Casing Size	Casing weight/foot	Setting Depth	Sacks of Cement	Estimated TOC
12 1/4"	8 5/8"	24#	400' 4cc'	275 sx	surface
7 7/8"	4 1/2" 5 1/2"	9.5/17#	3500'	600 sx	surface

Describe the proposed program. If this application is to DEEPEN or PLUG BACK, give the data on the present productive zone and proposed new productive zone.  
Describe the blowout prevention program, if any. Use additional sheets if necessary.

Propose to drill 12 1/4" hole to ~~300'~~ 400', set 8 5/8" casing to ~~300'~~ 400', cement with 275 sx C1 C, circulating to surface. Drill 7 7/8" hole to 3500', run open hole logs, set 4 1/2 - 5 1/2" casing to TD, cementing w/600 sx C1 C, circulating to surface. Will perforate & stimulate. Test.

I hereby certify that the information given above is true and complete to the best of my knowledge and belief.

Signature:

Printed name: Ann E. Ritchie

Title: Regulatory Agent

Date: 11-28-00

Phone: 505 684-6381

OIL CONSERVATION DIVISION

Approved by: ORIGINAL SIGNED BY TIM W. GUM  
DISTRICT II SUPERVISOR

Title:

Approval Date: DEC 01 2000 Expiration Date: DEC 01 2000

Conditions of Approval:

Attached ☐

DISTRICT I  
P.O. Box 1980, Hobbs, NM 88241-1980

DISTRICT II  
P.O. Drawer DD, Artesia, NM 88211-0719

DISTRICT III  
1000 Rio Brazos Rd., Aztec, NM 87410

DISTRICT IV  
P.O. BOX 2088, SANTA FE, N.M. 87504-2088

State of New Mexico  
Energy, Minerals and Natural Resources Department

Form C-102  
Revised February 10, 1994  
Submit to Appropriate District Office  
State Lease - 4 Copies  
Fee Lease - 3 Copies

OIL CONSERVATION DIVISION  
P.O. Box 2088  
Santa Fe, New Mexico 87504-2088

☐ AMENDED REPORT

WELL LOCATION AND ACREAGE DEDICATION PLAT

API Number	Pool Code 03230	Pool Name Artesia, Queen-Grayburg-San Andres
Property Code	Property Name ARTESIA UNIT	Well Number 88
OGRID No. 184860	Operator Name MELROSE OPERATING CO.	Elevation 3670

Surface Location

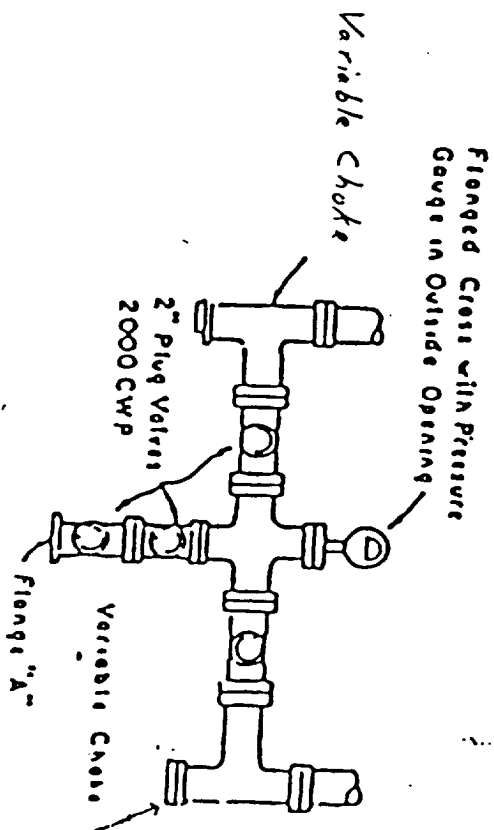
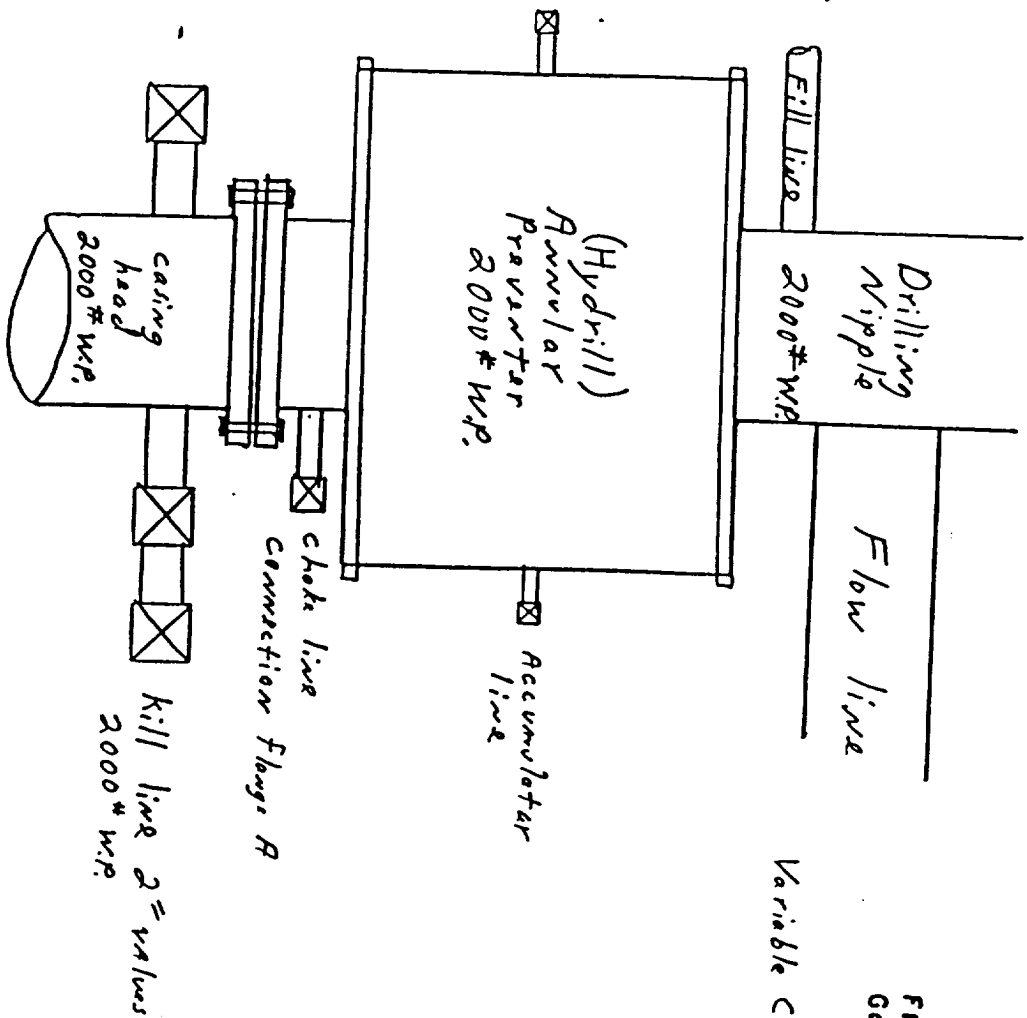
UL or lot No. K	Section 35	Township 17 S	Range 28 E	Lot Idn	Feet from the 1485	North/South line SOUTH	Feet from the 2475	East/West line WEST	County EDDY
--------------------	---------------	------------------	---------------	---------	-----------------------	---------------------------	-----------------------	------------------------	----------------

Bottom Hole Location If Different From Surface

UL or lot No.	Section	Township	Range	Lot Idn	Feet from the	North/South line	Feet from the	East/West line	County
Dedicated Acres		Joint or Infill X	Consolidation Code	Order No.					

NO ALLOWABLE WILL BE ASSIGNED TO THIS COMPLETION UNTIL ALL INTERESTS HAVE BEEN CONSOLIDATED  
OR A NON-STANDARD UNIT HAS BEEN APPROVED BY THE DIVISION

				<b>OPERATOR CERTIFICATION</b> <i>I hereby certify that the information contained herein is true and complete to the best of my knowledge and belief.</i>  Signature Ann E. Ritchie Printed Name Regulatory Agent Title 11-28-00 915 684-6381 Date	
				<b>SURVEYOR CERTIFICATION</b> <i>I hereby certify that the well location shown on this plat was plotted from field notes of actual surveys made by me or under my supervision, and that the same is true and correct to the best of my belief.</i> NOVEMBER 09, 2000 Date Surveyed Signature & Seal of Professional Surveyor  08-11-1423 Certificate No. RONALD J. EDSON 3239 GARY EDSON 12841	



**PLAN VIEW - CHOKE MANIFOLD**