

District I
1625 N. French Dr., Hobbs, NM 88240
District II
811 South First, Artesia, NM 88210
District III
1000 Rio Brazos Road, Aztec, NM 87410
District IV
2040 South Pacheco, Santa Fe, NM 87505

State of New Mexico
Energy Minerals and Natural Resources

Form C-101
Revised March 17, 1999

Oil Conservation Division
2040 South Pacheco
Santa Fe, NM 87505

Submit to appropriate District Office
State Lease - 6 Copies
Fee Lease - 5 Copies

☐ AMENDED REPORT

APPLICATION FOR PERMIT TO DRILL, RE-ENTER, DEEPEN, PLUGBACK, OR ADD A ZONE

¹ Operator Name and Address OXY USA Inc. P.O. Box 50250 Midland, TX 79710-0250		² OGRID Number 16696
		³ API Number 30-015- 31533
³ Property Code 24826	⁵ Property Name OXY Ijam State	⁶ Well No. 2

⁷ Surface Location

UL or lot no.	Section	Township	Range	Lot Idn	Feet from the	North/South line	Feet from the	East/West line	County
A	16	17S	27E		660	North	660	East	Eddy

⁸ Proposed Bottom Hole Location If Different From Surface

UL or lot no.	Section	Township	Range	Lot Idn	Feet from the	North/South line	Feet from the	East/West line	County

⁹ Proposed Pool 1
Logan Draw Morrow

¹⁰ Proposed Pool 2

¹¹ Work Type Code N	¹² Well Type Code G	¹³ Cable/Rotary R	¹⁴ Lease Type Code S-VA1467	¹⁵ Ground Level Elevation 3417'
¹⁶ Multiple No	¹⁷ Proposed Depth 9200'	¹⁸ Formation Morrow	¹⁹ Contractor UTI	²⁰ Spud Date 1/12/01

²¹ Proposed Casing and Cement Program

Hole Size	Casing Size	Casing weight/foot	Setting Depth	Sacks of Cement	Estimated TOC
12 1 1/4" 11"	8-5/8"	32#	1500'	515	Surface
7-7/8"	4-1/2"	11.6#	9200'	690	Est-5600'
BA					

22 Describe the proposed program. If this application is to DEEPEN or PLUG BACK, give the data on the present productive zone and proposed new productive zone. Describe the blowout prevention program, if any. Use additional sheets if necessary.

SEE OTHER SIDE

Notify OCD spud & time to witness
cementing of 8 5/8" CASING

²³ I hereby certify that the information given above is true and complete to the best of my knowledge and belief.

Signature:

Printed name: David Stewart

Title: Regulatory Analyst

Date:

1/5/01

Phone: 915-685-5717

OIL CONSERVATION DIVISION

Approved by:

ORIGINAL SIGNED BY TIM W. GUM

Title:

DISTRICT II SUPERVISOR

Approval Date:

JAN 08 2001

Expiration Date:

JAN 08 2002

Conditions of Approval:

Attached ☐

OXY Ijam State #2
660 FNL 660 FEL SEC 16 T17S R27E Eddy County, NM
State Lease No.

PROPOSED TD: 9200' TVD

BOP PROGRAM: 0' - 1500' None

1500' - 9200' 11" 5M blind pipe rams with 5M annular
preventer and rotating head below 5600'.

CASING: Surface: 8-5/8" OD 32# K55 ST&C new casing from 0-1500'
Production: 4-1/2" OD 11.6# N80 LT&C new casing from 0-9200'

CEMENT: Surface - circulate cement with 315sx 35:65 POZ/C with 6%
Bentonite + 2% CaCl₂ + .25#/sx Cello-Seal followed by 200sx Cl C
with 2% CaCl₂.

Production - Cement with 615sx 15:61:11 POZ/C/CSE with
.5% FL-52 + .5% FL-25 + 8#/sx Gilsonite followed by 75sx Cl C
with .7% FL-25.

Estimated top of cement is 5600'.

Note: Cement volumes may need to be adjusted to hole caliper.

MUD: 0 - 1500' Fresh water/native mud. Lime for pH control
(9-10). Paper for seepage.
Wt 8.7-9.2 ppg, Vis 32-34 sec

1500' - 5900' Fresh water. Lime for pH control (9-9.5).
Paper for seepage.
Wt 8.3-8.5 ppg, Vis 28-29 sec

5900' - 8300' Cut brine. Lime for pH control (10-10.5).
Wt 9.6-10.0 ppg, Vis 28-29sec

8300' - 9200' Mud up with an Duo Vis/Flo Trol mud system.
Wt 9.6-10.0ppg, Vis 32-36sec, WL<10cc

DISTRICT I
1625 N. French Dr., Hobbs, NM 88240

DISTRICT II
811 South First, Artesia, NM 88210

DISTRICT III
1000 Rio Brazos Rd., Aztec, NM 87410

DISTRICT IV
2040 South Pacheco, Santa Fe, NM 87505

State of New Mexico
Energy, Minerals and Natural Resources Department

Form C-102
Revised March 17, 1999

Submit to Appropriate District Office
State Lease - 4 Copies
Fee Lease - 3 Copies

OIL CONSERVATION DIVISION

2040 South Pacheco
Santa Fe, New Mexico 87504-2088

☐ AMENDED REPORT

WELL LOCATION AND ACREAGE DEDICATION PLAT

API Number 30-015-	Pool Code 80400	Pool Name Logan Draw Morrow
Property Code 24826	Property Name OXY IJAM STATE	Well Number 2
OGRID No. 16696	Operator Name OXY USA INC.	Elevation 3417'

Surface Location

UL or lot No.	Section	Township	Range	Lot Idn	Feet from the	North/South line	Feet from the	East/West line	County
A	16	17 S	27 E		660	NORTH	660	EAST	EDDY

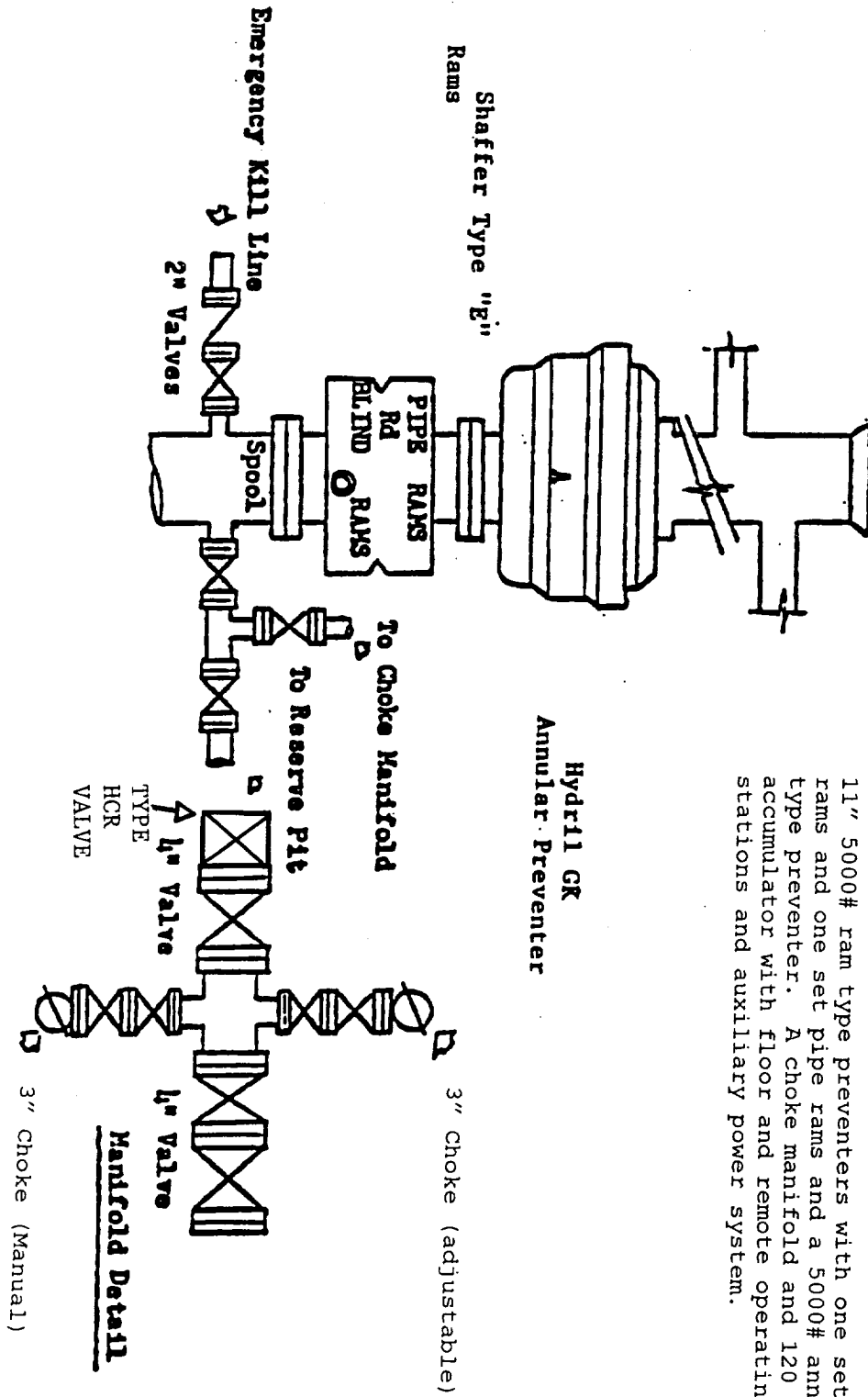
Bottom Hole Location If Different From Surface

UL or lot No.	Section	Township	Range	Lot Idn	Feet from the	North/South line	Feet from the	East/West line	County
Dedicated Acres 320	Joint or Infill Y	Consolidation Code	Order No.						

NO ALLOWABLE WILL BE ASSIGNED TO THIS COMPLETION UNTIL ALL INTERESTS HAVE BEEN CONSOLIDATED
OR A NON-STANDARD UNIT HAS BEEN APPROVED BY THE DIVISION

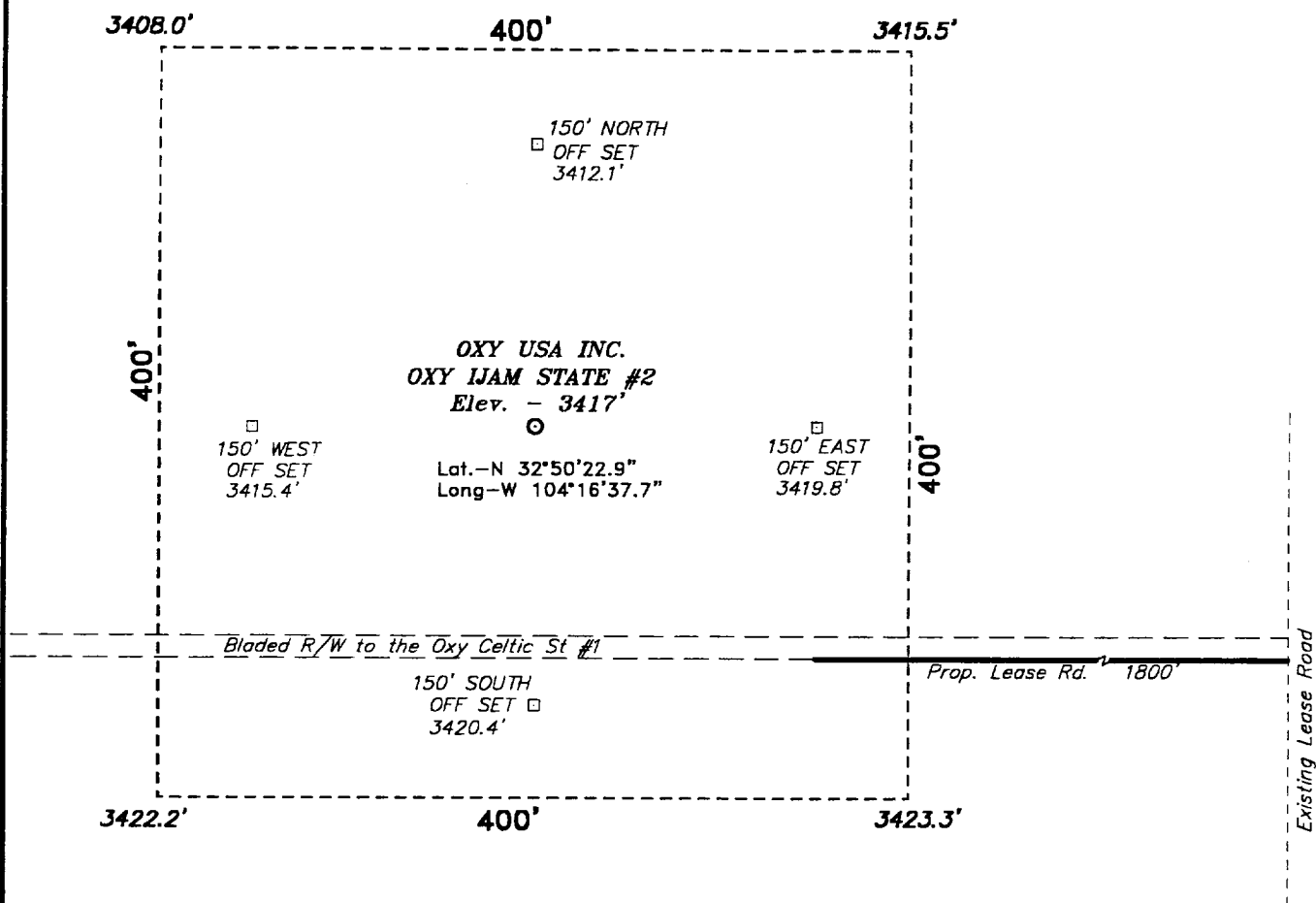
	<p>OPERATOR CERTIFICATION</p> <p>I hereby certify the the information contained herein is true and complete to the best of my knowledge and belief.</p> <p></p> <p>Signature David Stewart</p> <p>Printed Name Regulatory Analyst</p> <p>Title 11/5/01</p> <p>Date</p>
	<p>SURVEYOR CERTIFICATION</p> <p>I hereby certify that the well location shown on this plat was plotted from field notes of actual surveys made by me or under my supervision, and that the same is true and correct to the best of my belief.</p> <p>December 14, 2000</p> <p>Date Surveyed</p> <p>Signature & Seal of Professional Surveyor</p> <p>W.O. No. 0687A</p> <p>Certificate No. Gory L. Jones 7977</p> <p>BASIN SURVEYS</p>

BLOWOUT PREVENTOR SCHEME



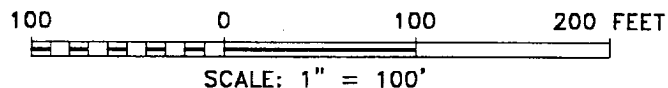
11" 5000# ram type preventers with one set blind rams and one set pipe rams and a 5000# annular type preventer. A choke manifold and 120 gallon accumulator with floor and remote operating stations and auxiliary power system.

SECTION 16, TOWNSHIP 17 SOUTH, RANGE 27 EAST, N.M.P.M.,
EDDY COUNTY, NEW MEXICO.



Directions to Location:

FROM THE JUNCTION OF US HWY 82 AND STATE HWY 360, GO WEST ON HWY 82 FOR 6.5 MILES TO A LEASE ROAD RT; THENCE NORTH ON LEASE ROAD 1.1 MILE TO PROPOSED LEASE ROAD LT, PROPOSED ROAD STAKED ALONG A PREVIOUSLY BLADED BUT NOT CALICHEED ROAD TO THE CELTIC STATE #1.



BASIN SURVEYS P.O. BOX 1786-HOBBS, NEW MEXICO

W.O. Number: 0687 Drawn By: **K. GOAD**

Date: 12-19-2000 Disk: KJG #122 - 0687A.DWG

Oxy USA Inc.

REF: Oxy IJAM State No. 2 / Well Pad Topo

THE OXY IJAM STATE No. 2 LOCATED 660' FROM THE NORTH LINE AND 660' FROM THE EAST LINE OF SECTION 16, TOWNSHIP 17 SOUTH, RANGE 27 EAST, N.M.P.M., EDDY COUNTY, NEW MEXICO.

Survey Date: 12-14-2000 Sheet 1 of 1 Sheets

