

District I
PO Box 1980, Hobbs, NM 88241-1980

District II
811 South First, Artesia, NM 88210

District III
1000 Rio Brazos Rd., Aztec, NM 87410

District IV
2040 South Pacheco, Santa Fe, NM 87505

State of New Mexico
Energy, Minerals & Natural Resources Department

OIL CONSERVATION DIVISION
2040 South Pacheco
Santa Fe, NM 87505

Form C-101
Revised October 18, 1994
Instructions on back
Submit to Appropriate District Office
State Lease - 6 Copies
Fee Lease - 5 Copies

☐ AMENDED REPORT

APPLICATION FOR PERMIT TO DRILL, RE-ENTER, DEEPEN, PLUGBACK, OR ADD A ZONE

Operator Name and Address SDX Resources, Inc. PO Box 5061 Midland, TX 79704 915/685-1761		OGRID Number 020451
		API Number 30 - 015-31541
Property Code 27123	Property Name Jeffers State 36 STATE	Well No. 3

Surface Location

UL or lot no.	Section	Township	Range	Lot Idn	Feet from the	North/South line	Feet from the	East/West Line	County
B	36	17S	27E		460	North	1650	East	Eddy

Proposed Bottom Hole Location If Different From Surface

UL or lot no.	Section	Township	Range	Lot Idn	Feet from the	North/South line	Feet from the	East/West Line	County
Proposed Pool 1					Proposed Pool 2				
Red Lake QN-GB-SA									

Work Type Code N	Well Type Code O	Cable/Rotary R	Lease Type Code S	Ground Level Elevation 3616
Multiple No	Proposed Depth 4000	Formation QN-GB-SA	Contractor United Drig	Spud Date 02-01-01

Proposed Casing and Cement Program

Hole Size	Casing Size	Casing weight/foot	Setting Depth	Sacks of Cement	Estimated TOC
12-1/4"	8-5/8"	24#	400	325	Surf
7-7/8"	5-1/2"	14#	4000	600	Surf

Describe the proposed program. If this application is to DEEPEN or PLUG BACK give the data on the present productive zone and proposed new productive zone. Describe the blowout prevention program, if any. Use additional sheets if necessary.

Plan to drill a 12-1/4" hole to appx 400'. Set 8-5/8" surf csg. Circ CI C cmt to surf. Drill 7-7/8" hole to TD. Run OH log (LDT-CNL-GR & DLL). Run 5-1/2" csg & circ 50/50 POZ CI C cmt. Perf the QN-GB-SA and stimulate as necessary for optimum production.

I hereby certify that the information given above is true and complete to the best of my knowledge and belief.

Signature:

Bonnie Atwater

Printed name: Bonnie Atwater

Title: Regulatory Tech

1/9/01

OIL CONSERVATION DIVISION

Approved By

ORIGINAL SIGNED BY TIM W. GUN
DISTRICT II SUPERVISOR

Title:

Approval Date:

JAN 11 2001

Expiration Date:

JAN 11 2002

District I
1625 N. French Dr., Hobbs, NM 88240

District II
811 South First, Artesia, NM 88210

District III
1000 Rio Brazos Rd., Aztec, NM 87410

District IV
2040 South Pacheco, Santa Fe, NM 87505

State of New Mexico
Energy, Minerals & Natural Resources

OIL CONSERVATION DIVISION
2040 South Pacheco
Santa Fe, NM 87505

Form C-102
Revised March 17, 1999

Submit to Appropriate District Office
State Lease - 4 Copies
Fee Lease - 3 Copies

☐ AMENDED REPORT

WELL LOCATION AND ACREAGE DEDICATION PLAT

API Number		Pool Code	Pool Name
		51300	Red Lake QN-GB-SA
Property Code	Property Name		Well Number
25196	JEFFERS 36 STATE		3
OGRID No.	Operator Name		Elevation
020451	SDX RESOURCES, INC.		3616.

¹⁰ Surface Location

UL or lot no.	Section	Township	Range	Lot Idn	Feet from the	North/South line	Feet from the	East/West line	County
B	36	17-S	27-E		460	NORTH	1650	EAST	EDDY

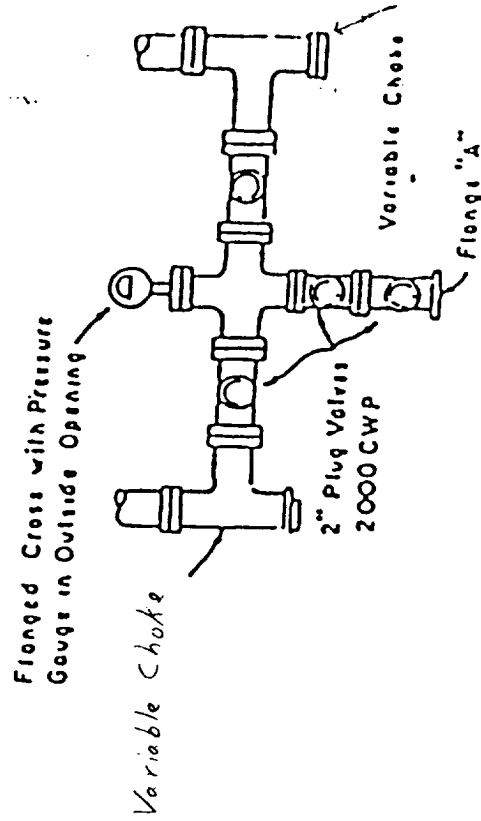
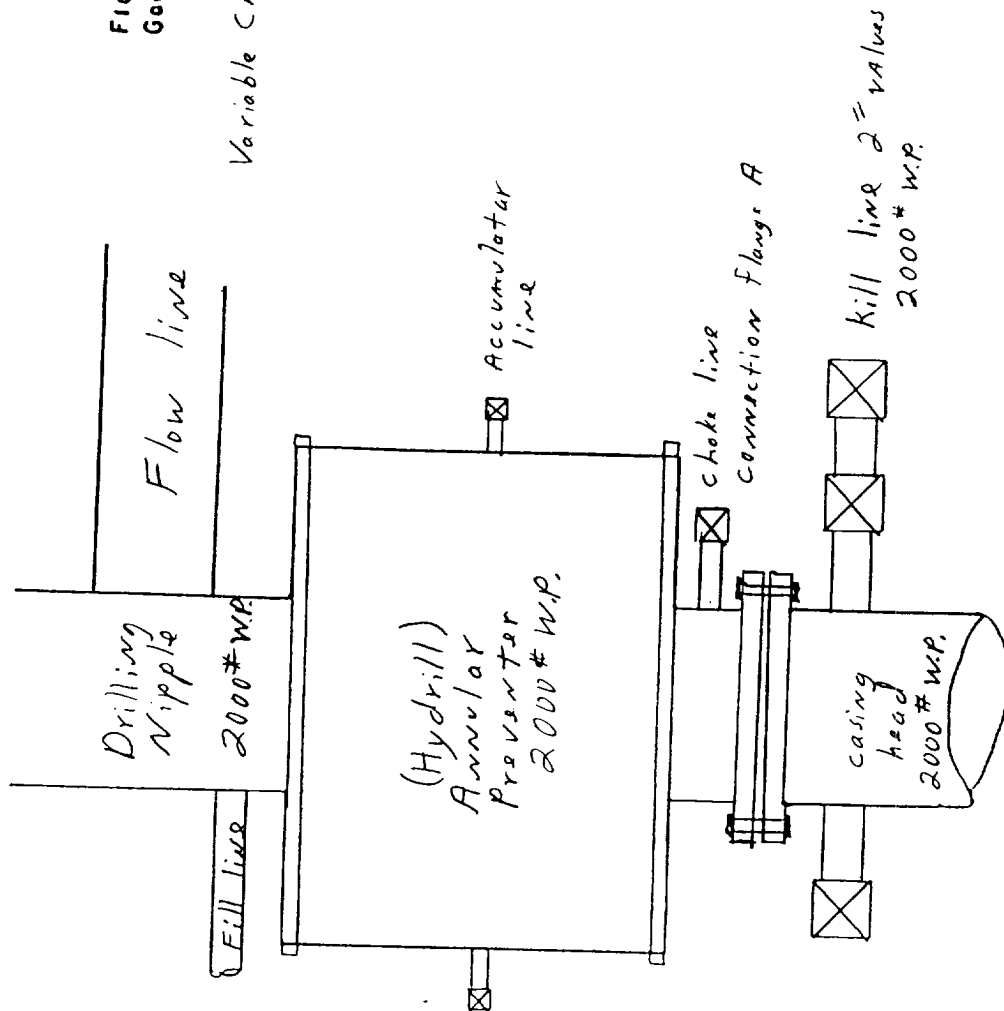
¹¹ Bottom Hole Location If Different From Surface

UL or lot no.	Section	Township	Range	Lot Idn	Feet from the	North/South line	Feet from the	East/West line	County

¹² Dedicated Acres	¹³ Joint or Infill	¹⁴ Consolidation Code	¹⁵ Order No.
40			

NO ALLOWABLE WILL BE ASSIGNED TO THIS COMPLETION UNTIL ALL INTERESTS HAVE BEEN CONSOLIDATED OR A NON-STANDARD UNIT HAS BEEN APPROVED BY THE DIVISION

16			460'							<h4>¹⁷ OPERATOR CERTIFICATION</h4> <p>I hereby certify that the information contained herein is true and complete to the best of my knowledge and belief</p> <p>Signature: <i>Bonnie Atwater</i></p> <p>Printed Name: Bonnie Atwater</p> <p>Title: Regulatory Tech</p> <p>Date: 1/9/01</p> <h4>¹⁸ SURVEYOR CERTIFICATION</h4> <p>I hereby certify that the well location shown on this plat was plotted from field notes of actual surveys made by me or under my supervision, and that the same is true and correct to the best of my belief.</p> <p>DECEMBER 29, 2000</p> <p>Date of Survey</p> <p>Signature and Seal of Professional Surveyor</p> <p>REGISTERED PROFESSIONAL ENGINEER</p> <p>5412</p> <p>NM PE&PS NO. 5412</p> <p>Certificate Number</p>



PLAN VIEW - CHOKE MANIFOLD