

District I
1625 N. French Dr., Hobbs, NM 88240
District II
811 South First, Artesia, NM 88210
District III
1000 Rio Brazos Road, Aztec, NM 87410
District IV
2040 South Pacheco, Santa Fe, NM 87505

State of New Mexico
Energy Minerals and Natural Resources

Form C-101
Revised March 17, 1999

Oil Conservation Division
2040 South Pacheco
Santa Fe, NM 87505

Submit to appropriate District Office
State Lease - 6 Copies
Fee Lease - 5 Copies

☐ AMENDED REPORT

APPLICATION FOR PERMIT TO DRILL, RE-ENTER, DEEPEN, PLUGBACK, OR ADD A ZONE

¹ Operator Name and Address OXY USA WTP Limited Partnership P.O. Box 50250 Midland, TX 79710-0250		² OGRID Number 192463
³ Property Code 24866 27487	³ Property Name OXY Skinny Saloon State	³ API Number 30-015-31590
		⁶ Well No. 2

⁷ Surface Location

UL or lot no.	Section	Township	Range	Lot Idn	Feet from the	North/South line	Feet from the	East/West line	County
M	11	17S	27E		990	South	990	West	Eddy

⁸ Proposed Bottom Hole Location If Different From Surface

UL or lot no.	Section	Township	Range	Lot Idn	Feet from the	North/South line	Feet from the	East/West line	County
⁹ Proposed Pool 1 Logan Draw Morrow					80400	¹⁰ Proposed Pool 2			

¹¹ Work Type Code N	¹² Well Type Code G	¹³ Cable/Rotary R	¹⁴ Lease Type Code S - V5102	¹⁵ Ground Level Elevation 3414'
¹⁶ Multiple No	¹⁷ Proposed Depth 9600'	¹⁸ Formation Morrow	¹⁹ Contractor UTI	²⁰ Spud Date 2/20/01

²¹ Proposed Casing and Cement Program

Hole Size	Casing Size	Casing weight/foot	Setting Depth	Sacks of Cement	Estimated TOC
17-1/2"	13-3/8"	48#	400'	360	Surface
11"	8-5/8"	32#	1500'	515	Surface
7-7/8"	4-1/2"	11.6#	9600'	805	Est-5600'

²² Describe the proposed program. If this application is to DEEPEN or PLUG BACK, give the data on the present productive zone and proposed new productive zone. Describe the blowout prevention program, if any. Use additional sheets if necessary.

SEE OTHER SIDE

²³ I hereby certify that the information given above is true and complete to the best of my knowledge and belief. Signature: <i>David Stewart</i>		OIL CONSERVATION DIVISION	
Printed name: David Stewart		Approved by: ORIGINAL SIGNED BY TIM W. GUM DISTRICT IV SUPERVISOR	
Title: Regulatory Analyst		Title:	
Date: 1/30/01		Approval Date: FEB 01 2001 Expiration Date: FEB 01 2002	
Phone: 915-685-5717		Conditions of Approval: Attached <input type="checkbox"/>	

OXY Skinny Saloon State #2
990 FSL 990 FWL M SEC 11 T17S R27E Eddy County, NM
State Lease No. V-5102

PROPOSED TD: 9600' TVD

BOP PROGRAM: 0'-400' None

400'-1500' 11" 5M blind and pipe rams with 5M annular preventer.

1500'-9600' 11" 5M blind pipe rams with 5M annular preventer and rotating head below 6000'.

CASING: Surface: 13-3/8" OD 48# H40 ST&C new casing set at 400' 17-1/2" hole

Intermediate: 8-5/8" OD 32# K55 ST&C new casing from 0-1500' 11" hole

Production: 4-1/2" OD 11.6# N80 LT&C new casing from 0-9600' 7-7/8" hole

CEMENT: Surface - Circulate cement with 160sx 35:65 POZ/C with 6% Bentonite + 2% CaCl₂ + .25#/sx Cello-Seal followed by 200sx Cl C with 2% CaCl₂.

Intermediate - Circulate cement with 315sx 35:65 POZ/C with 6% Bentonite + 2% CaCl₂ + .25#/sx Cello-Seal followed by 200sx Cl C with 2% CaCl₂.

Production - Cement with 730sx 15:61:11 POZ/C/CSE with .5% FL-52 + .5% FL-25 + 8#/sx Gilsonite followed by 75sx Cl C with .7% FL-25.

Estimated top of cement is 5600'.

Note: Cement volumes may need to be adjusted to hole caliper.

MUD: 0-400' Fresh water/native mud. Lime for pH control (9-10). Paper for seepage. Wt 8.7-9.2 ppg, Vis 32-34 sec

400'-1500' Fresh/*Brine water. Lime for pH control (10.0-10.5). Paper for seepage. Wt 8.3-9.0/10.0-10.1ppg, Vis 28-29 sec *Fresh water will be used unless chlorides in the mud system increases to 20000ppm.

1500'-6000' Fresh water. Lime for pH control (9-9.5). Paper for seepage. Wt 8.3-8.5 ppg, Vis 28-29 sec

6000'-8600' Cut brine. Lime for pH control (10-10.5). Wt 9.6-10.0 ppg, Vis 28-29sec

8600'-9600' Mud up with an Duo Vis/Flo Trol mud system. Wt 9.6-10.0ppg, Vis 32-36sec, WL<10cc

DISTRICT I
P.O. Box 1980, Hobbs, NM 88240

State of New Mexico
Energy, Minerals and Natural Resources Department

Form C-102
Revised February 10, 1994
Instruction on back
Submit to Appropriate District Office
State Lease - 4 Copies
Fee Lease - 3 Copies

DISTRICT II
P.O. Drawer DD, Artesia, NM 88210

DISTRICT III
1000 Rio Brazos Rd., Aztec, NM 87410

OIL CONSERVATION DIVISION

P.O. Box 2088
Santa Fe, New Mexico 87504-2088

☐ AMENDED REPORT

WELL LOCATION AND ACREAGE DEDICATION PLAT

API Number 30-015-	Pool Code 80400	Pool Name Logan Draw Morrow
Property Code 24866	Property Name OXY SKINNY SALOON STATE	Well Number 2
OGRID No. 192463	Operator Name OXY USA WTP Limited Partnership	Elevation 3414

Surface Location

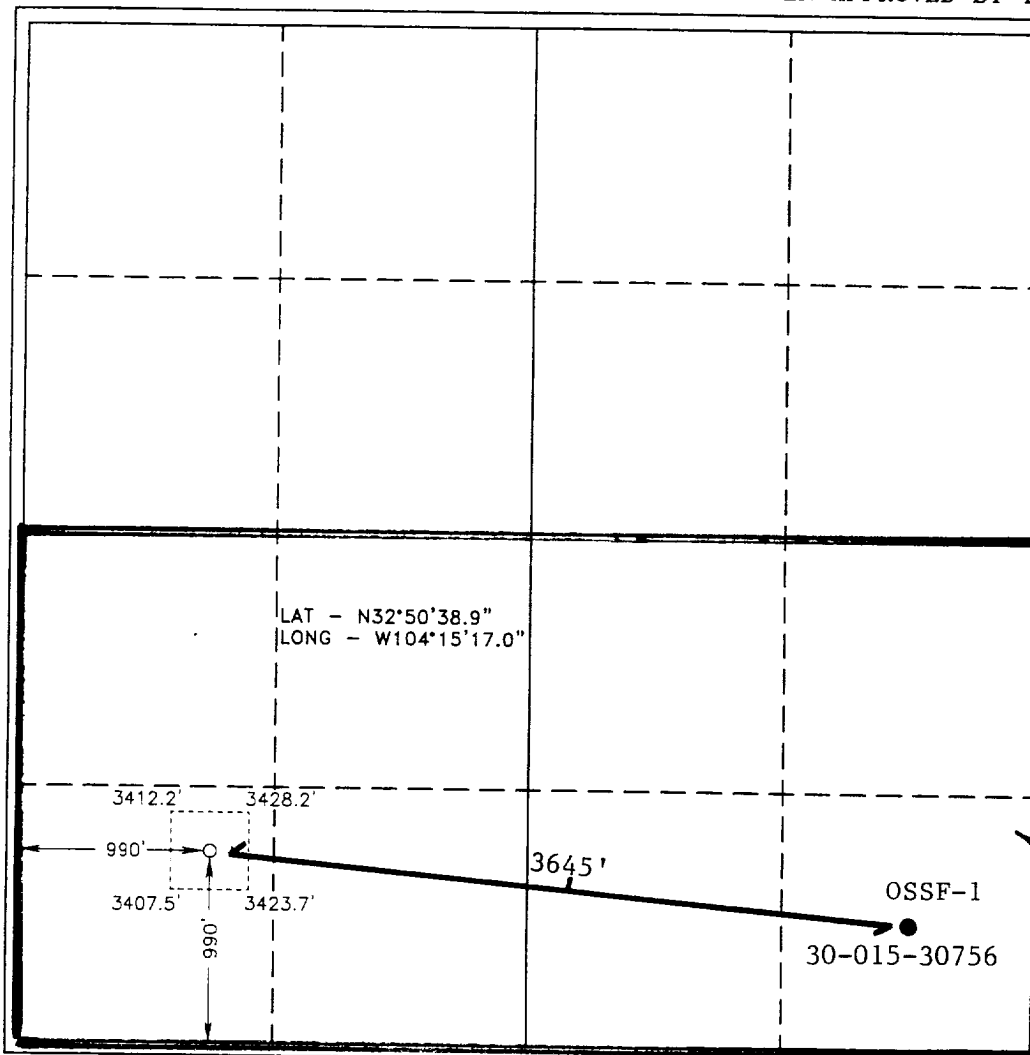
UL or lot No. M	Section 11	Township 17 S	Range 27 E	Lot Idn	Feet from the 990	North/South line SOUTH	Feet from the 990	East/West line WEST	County EDDY
--------------------	---------------	------------------	---------------	---------	----------------------	---------------------------	----------------------	------------------------	----------------

Bottom Hole Location If Different From Surface

UL or lot No.	Section	Township	Range	Lot Idn	Feet from the	North/South line	Feet from the	East/West line	County
---------------	---------	----------	-------	---------	---------------	------------------	---------------	----------------	--------

Dedicated Acres 320	Joint or Infill Y	Consolidation Code	Order No.
------------------------	----------------------	--------------------	-----------

NO ALLOWABLE WILL BE ASSIGNED TO THIS COMPLETION UNTIL ALL INTERESTS HAVE BEEN CONSOLIDATED
OR A NON-STANDARD UNIT HAS BEEN APPROVED BY THE DIVISION



OPERATOR CERTIFICATION

I hereby certify the the information
contained herein is true and complete to the
best of my knowledge and belief.

David Stewart
Signature

David Stewart

Printed Name

Regulatory Analyst

Title

11/30/01

Date

SURVEYOR CERTIFICATION

I hereby certify that the well location shown
on this plat was plotted from field notes of
actual surveys made by me or under my
supervision, and that the same is true and
correct to the best of my belief.

NOVEMBER 15, 2000

Date Survey

Signature

Professional Surveyor

NEW MEXICO

7977

30-015-30756

Professional Land Surveyor

7977

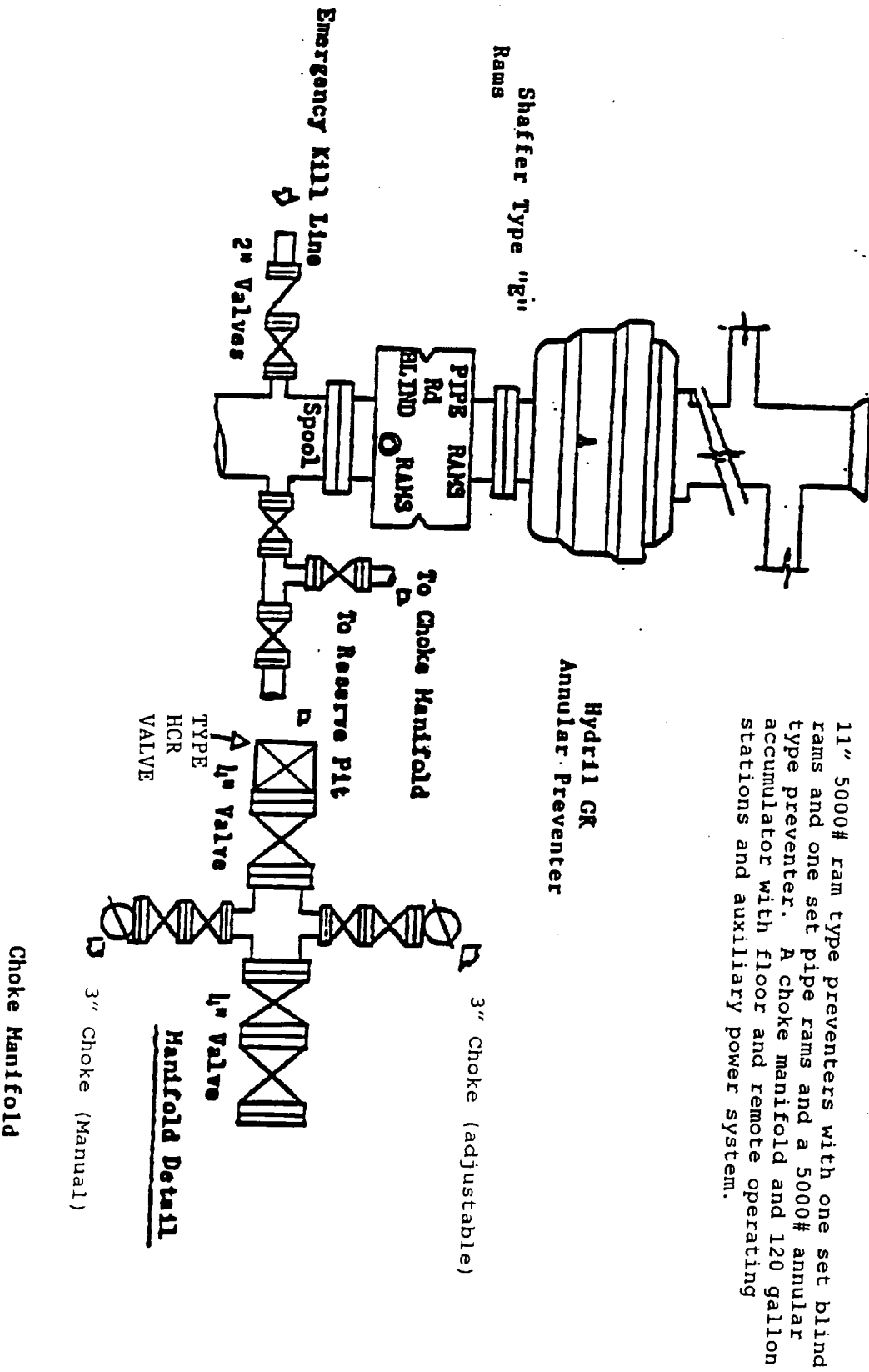
Professional Land Surveyor

7977

Professional Land Surveyor

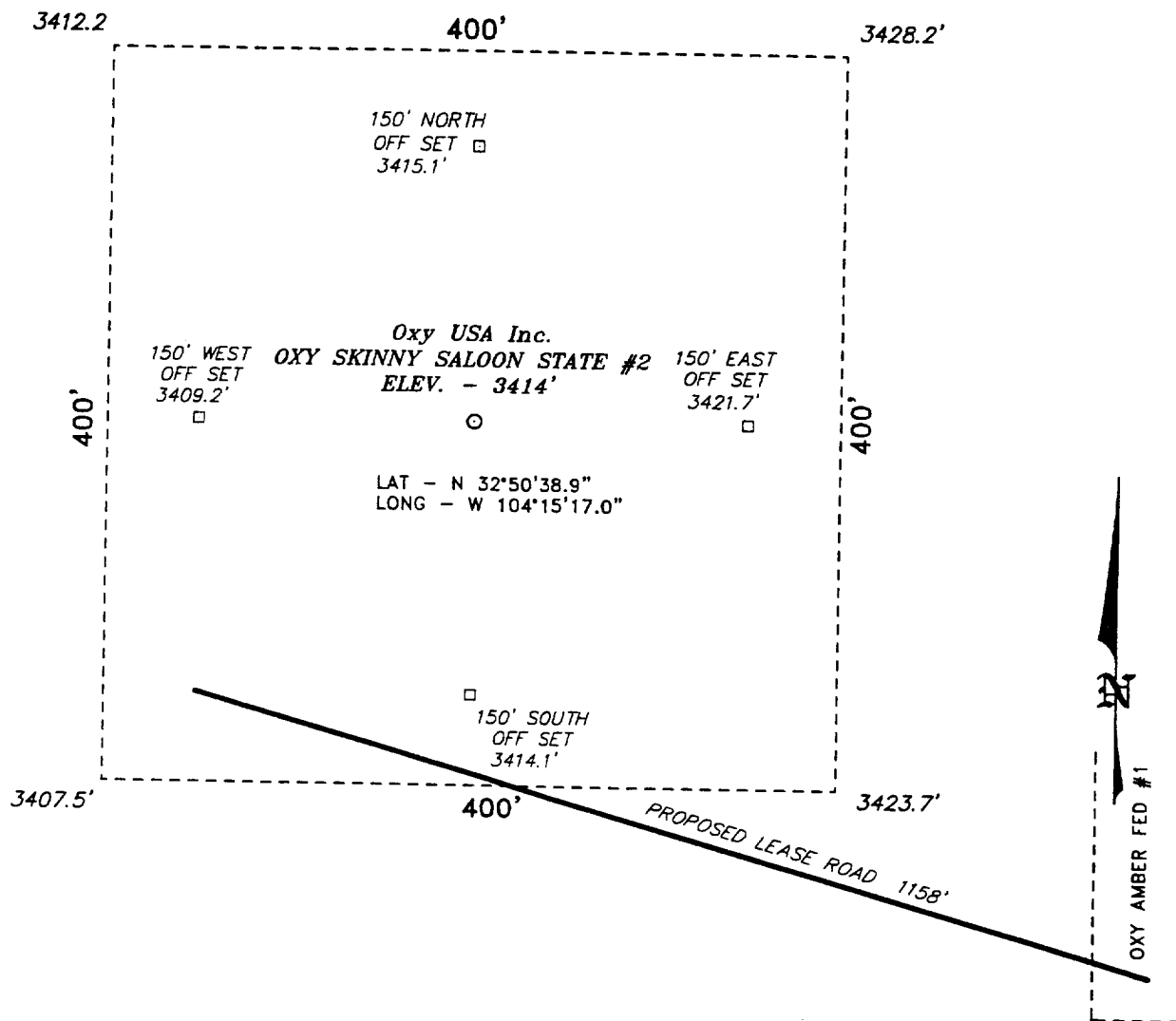
7977

BLOWOUT PREVENTOR SCHEME



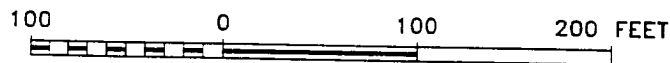
11" 5000# ram type preventers with one set blind rams and one set pipe rams and a 5000# annular type preventer. A choke manifold and 120 gallon accumulator with floor and remote operating stations and auxiliary power system.

SECTION 11, TOWNSHIP 17 SOUTH, RANGE 27 EAST, N.M.P.M.,
EDDY COUNTY, NEW MEXICO.



DIRECTIONS TO LOCATION

FROM JUNCTION COUNTRY ROAD 202 & HWY 82 GO NORTH
ON 202 FOR 2.3 MILES TO A LEASE ROAD GOING WEST.
THEN WEST 0.7 MILES TO ABANDONED LOCATION &
PROPOSED ROAD.



SCALE: 1" = 100'

BASIN SURVEYS P.O. BOX 1786-HOBBS, NEW MEXICO

W.O. Number: 0634 Drawn By: C. JONES

Date: 11-17-00 Disk: CLJ #1 - 0634A.DWG

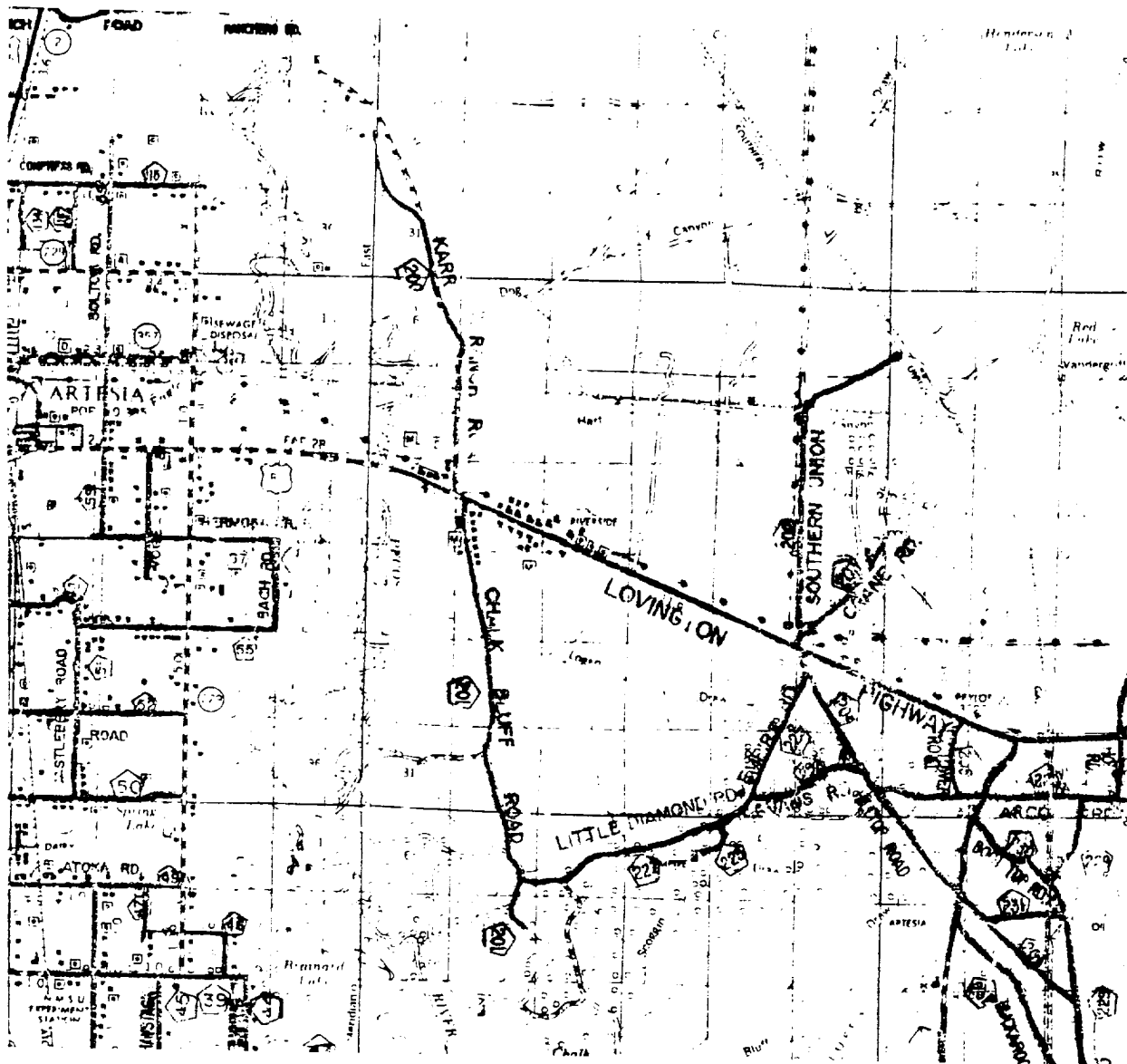
OXY USA INC.

REF: Oxy SKINNY SALOON STATE. No. 2 / Well Pad Topo

THE OXY SKINNY SALOON STATE No. 2 LOCATED 990' FROM
THE SOUTH LINE AND 990' FROM THE WEST LINE OF
SECTION 11, TOWNSHIP 17 SOUTH, RANGE 27 EAST,
N.M.P.M., EDDY COUNTY, NEW MEXICO.

Survey Date: 11-15-00

Sheet 1 of 1 Sheets



OXY SKINNY SALOON STATE #2
 Located at 990' FSL and 990' FWL
 Section 11, Township 17 South, Range 27 East,
 N.M.P.M., Eddy County, New Mexico.

basin
surveys

focused on excellence
 in the oilfield

P.O. Box 1786
 1120 N. West County Rd.
 Hobbs, New Mexico 88241
 (505) 393-7316 - Office
 (505) 392-3074 - Fax
 basinsurveys.com

W.O. Number: 0623AA - KJG #122

Survey Date: 11-15-2000

Scale: 1" = 2 MILES

Date: 11-17-2000

OXY USA INC.