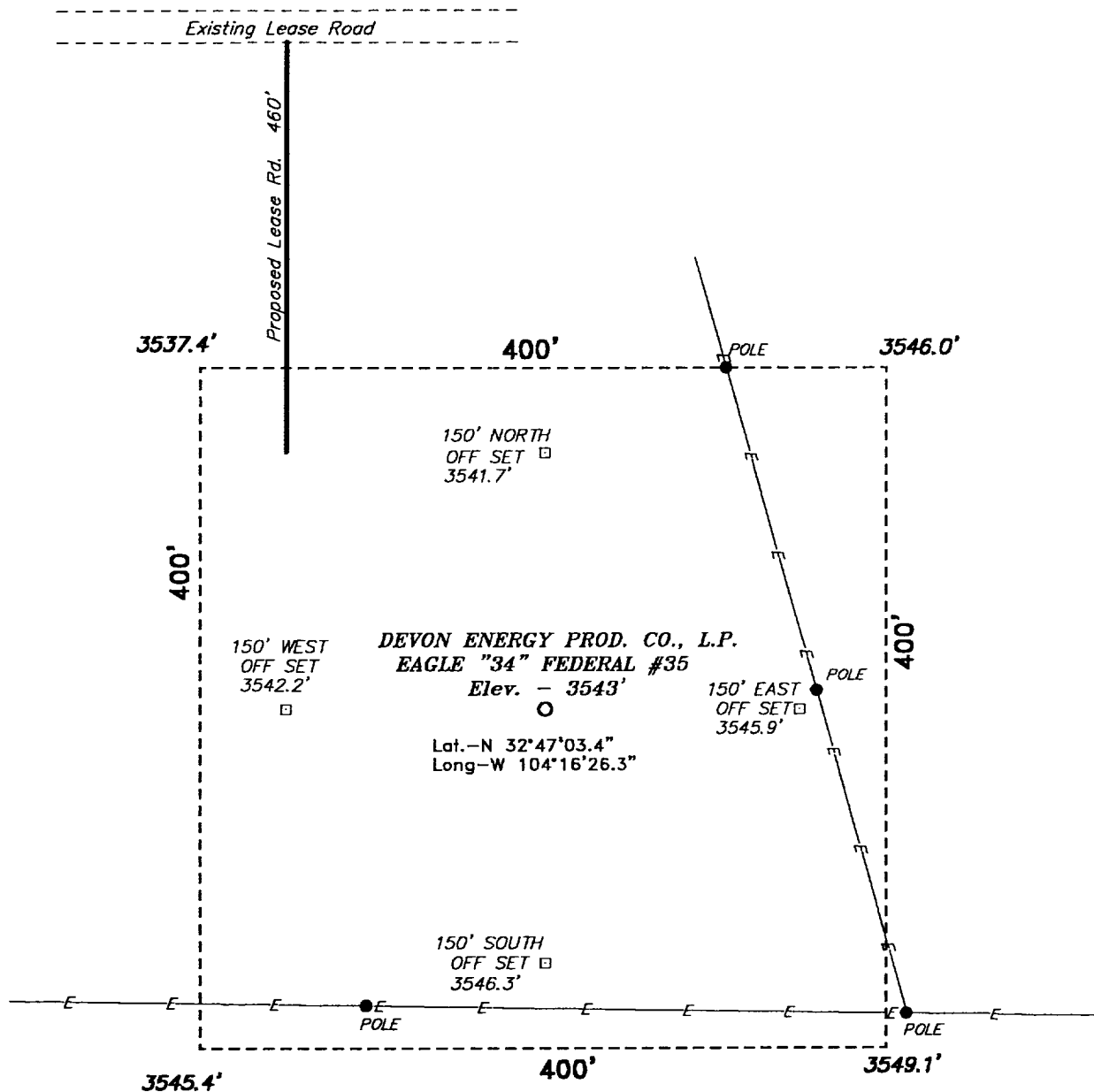
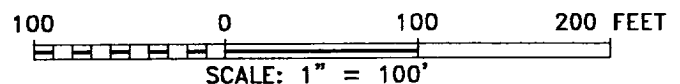


**SECTION 34, TOWNSHIP 17 SOUTH, RANGE 27 EAST, N.M.P.M.,  
EDDY COUNTY, NEW MEXICO.**



**Directions to Location:**

FROM THE JUNCTION OF CO. RD. 225 AND US HWY 82, GO SOUTHERLY ON CO. RD. 225 APPROX. 3.0 MILES TO A LEASE ROAD; THENCE NORTHWEST ON LEASE ROAD APPROX. 0.75 MILE TO LEASE ROAD; THENCE WEST ON LEASE ROAD APPROX. 500 FEET TO THE PROPOSED WELL PAD.



**DEVON ENERGY PROD. CO., L.P.**

REF: Eagle "34" Fed. No. 35 / Well Pad Topo

THE EAGLE "34" FED. No. 35 LOCATED 330' FROM  
THE SOUTH LINE AND 330' FROM THE WEST LINE OF  
SECTION 34, TOWNSHIP 17 SOUTH, RANGE 27 EAST,  
N.M.P.M., EDDY COUNTY, NEW MEXICO.

**BASIN SURVEYS** P.O. BOX 1786—HOBBS, NEW MEXICO

|                   |                   |
|-------------------|-------------------|
| W.O. Number: 1093 | Drawn By: K. GOAD |
|-------------------|-------------------|

Date: 02-16-2001 Disk: KJG CD#3 - 1093D.DWG

|                         |                     |
|-------------------------|---------------------|
| Survey Date: 02-15-2001 | Sheet 1 of 1 Sheets |
|-------------------------|---------------------|