

District I
1625 N. French Dr., Hobbs, NM 88240
District II
811 South First, Artesia, NM 88210
District III
1000 Rio Brazos Road, Aztec, NM 87410
District IV
2040 South Pacheco, Santa Fe, NM 87505

State of New Mexico
Energy Minerals and Natural Resources

Oil Conservation Division
2040 South Pacheco
Santa Fe, NM 87505

Form C-101
Revised March 17, 1999

Submit to appropriate District Office
State Lease - 6 Copies
Fee Lease - 5 Copies

☐ AMENDED REPORT

APPLICATION FOR PERMIT TO DRILL, RE-ENTER, DEEPEN, PLUG BACK, OR ADD A ZONE

Operator Name and Address CONCHO RESOURCES, INC. 110 WEST LOUISIANA SUITE 410 MIDLAND, TEXAS 79702		OGRID Number 166111
Property Code 28054	Property Name TROLL "7" COM.	API Number 30-015-31780
		Well No. 1

Surface Location

UL or lot no.	Section	Township	Range	Lot Idn	Feet from the	North/South line	Feet from the	East/West line	County
I	7	17S-	27E		1980'	NORTH	1780'	EAST	EDDY

Proposed Bottom Hole Location If Differ

UL or lot no.	Section	Township	Range	Lot Idn	Feet from the	North
LOGAN DRAW - MORROW (80400)						

NOTIFY OCD SPUD & TIME TO WITNESS
CEMENTING OF 8 5/8" CASING STRING

Work Type Code N	Well Type Code G	Cable/Rotary ROTARY	Lease Type Code P	Ground Level Elevation
Multiple NO	Proposed Depth 9200'	Formation MORROW	Contractor Unknown	Spud Date When approved

Proposed Casing and Cement Program

Hole Size	Casing Size	Casing weight/foot	Setting Depth	Sacks of Cement	Estimated TOC
25"	20"	Conductor	40'	Redi-mix	Surface
17 1/2"	13 3/8"	48	400'	375 Sx.	Surface
12 1/4"	8 5/8"	32	1800'	650 Sx	Surface
7 7/8"	4 1/2"	11.6	9200'	700 Sx	6000' FS.

Describe the proposed program. If this application is to DEEPEN or PLUG BACK, give the data on the present productive zone and proposed new productive zone.
Describe the blowout prevention program, if any. Use additional sheets if necessary.

1. Drill 25" hole to 40'. Set 40' of 20" conductor and cement to surface with Redi-mix.
2. Drill 17 1/2" hole to 400'. Run and set 400' of 13 3/8" 48# H-40 ST&C casing. Cement with 225 Sx. of Class "C" Light + additives, tail in with 150 Sx. of Class "C" cement + 2% CaCl₂, + 1/2# Flocele/Sx. Circulate cement to surface.
3. Drill 12 1/4" hole to 1800'. Run and set 1800' of 8 5/8" 32# J-55 ST&C casing. Cement with 450 Sx. of Class "C" Light + additives, tail in with 200 Sx. of Class "C" + 2% CaCl₂, + 1/2# Flocele/Sx. Circulate cement to surface.
4. Drill 7 7/8" hole to 9200'. Run and set 9200' of 4 1/2" 11.6# N-80 LT&C casing. Cement with 300 Sx. of Class "H" Light cement + additives, tail in with 400 Sx. of Class "H" Premium Plus + additives, estimate top of cement 6000' FS.

I hereby certify that the information given above is true and complete to the best of my knowledge and belief.

Signature:

Printed name: Joe T. Janica

Title: Agent

Date: 05/14/01

Phone: 505-391-8503

OIL CONSERVATION DIVISION

Approved by: ORIGINAL SIGNED BY TIM W. GUM
DISTRICT II SUPERVISOR

Title:

Approval Date: MAY 16 2001

Expiration Date: MAY 16 2002

Conditions of Approval:

Attached ☐

DISTRICT I
1625 N. French Dr., Hobbs, NM 88240

DISTRICT II
811 South First, Artesia, NM 88210

DISTRICT III
1000 Rio Brazos Rd., Aztec, NM 87410

DISTRICT IV
2040 South Pacheco, Santa Fe, NM 87505

State of New Mexico
Energy, Minerals and Natural Resources Department

Form C-102
Revised March 17, 1999

Submit to Appropriate District Office
State Lease - 4 Copies
Fee Lease - 3 Copies

OIL CONSERVATION DIVISION

2040 South Pacheco
Santa Fe, New Mexico 87505

☐ AMENDED REPORT

WELL LOCATION AND ACREAGE DEDICATION PLAT

API Number	Pool Code 80400	Pool Name LOGAN DRAW-MORROW
Property Code	Property Name TROLL "7" COM	Well Number 1
OGRD No. 166111	Operator Name CONCHO RESOURCES, INC.	Elevation 3323'

Surface Location

UL or lot No.	Section	Township	Range	Lot Idn	Feet from the	North/South line	Feet from the	East/West line	County
J	7	17	27 E		1980	SOUTH	1780	EAST	EDDY

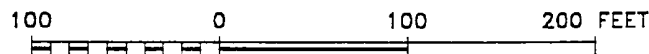
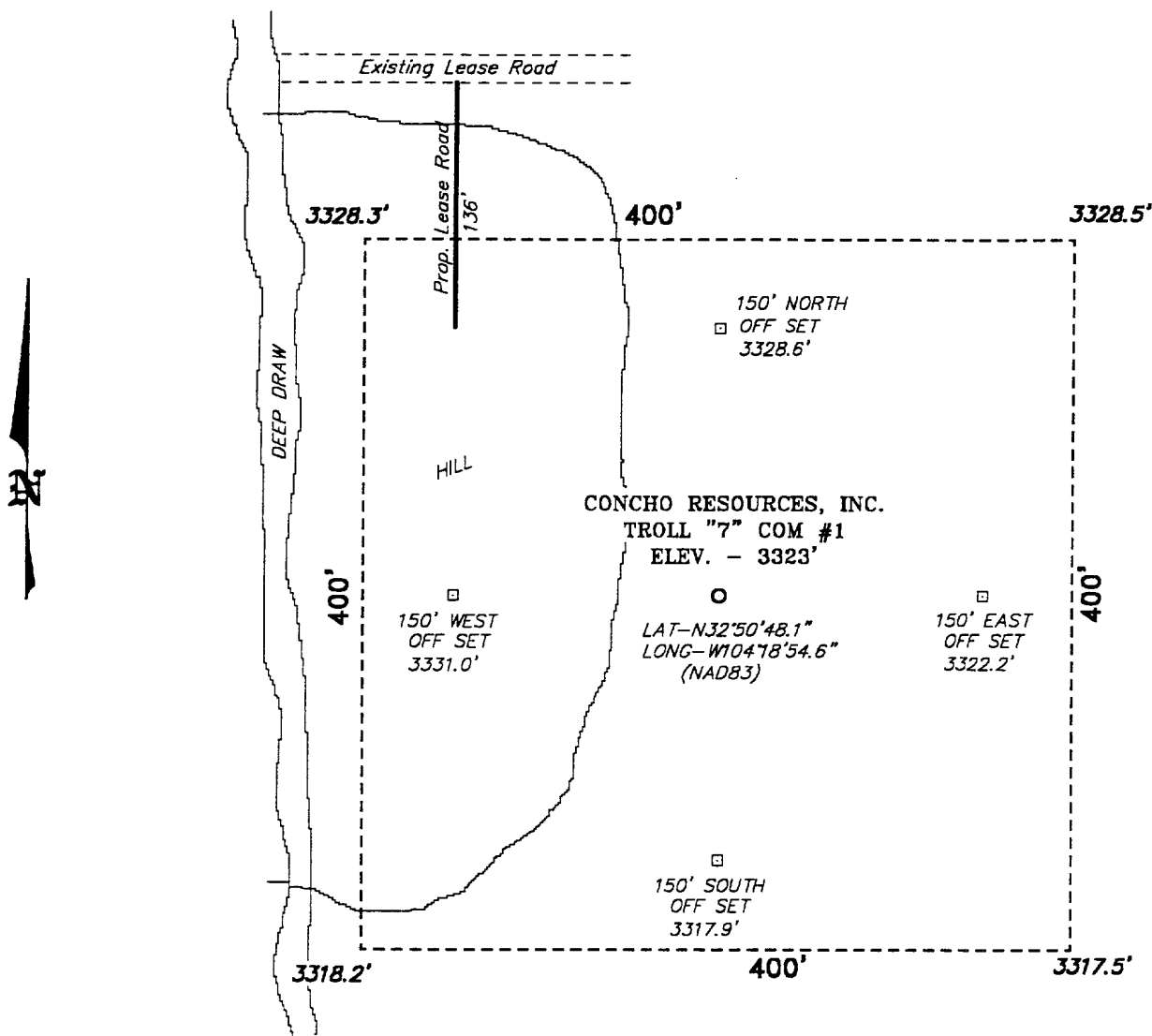
Bottom Hole Location If Different From Surface

UL or lot No.	Section	Township	Range	Lot Idn	Feet from the	North/South line	Feet from the	East/West line	County
Dedicated Acres 320	Joint or Infill	Consolidation Code	Order No.						

NO ALLOWABLE WILL BE ASSIGNED TO THIS COMPLETION UNTIL ALL INTERESTS HAVE BEEN CONSOLIDATED
OR A NON-STANDARD UNIT HAS BEEN APPROVED BY THE DIVISION

	OPERATOR CERTIFICATION I hereby certify the the information contained herein is true and complete to the best of my knowledge and belief. Signature Joe T. Janica Printed Name Agent Title 05/14/01 Date
	SURVEYOR CERTIFICATION I hereby certify that the well location shown on this plat was plotted from field notes of actual surveys made by me or under my supervision, and that the same is true and correct to the best of my belief. May 8, 2001 Date Surveyed Signature & Seal of Professional Surveyor NEW MEXICO 1977 W.O. No. 1457A Certificate No. Gary L. Jones 7977 PROFESSIONAL LAND SURVEYOR DRAIN SURVEYS

SECTION 7, TOWNSHIP 17 SOUTH, RANGE 27 EAST, N.M.P.M.,
 EDDY COUNTY, NEW MEXICO.



SCALE: 1" = 100'

CONCHO RESOURCES, INC.

REF: Troll "7" Com No. 1 / Well Pad Topo

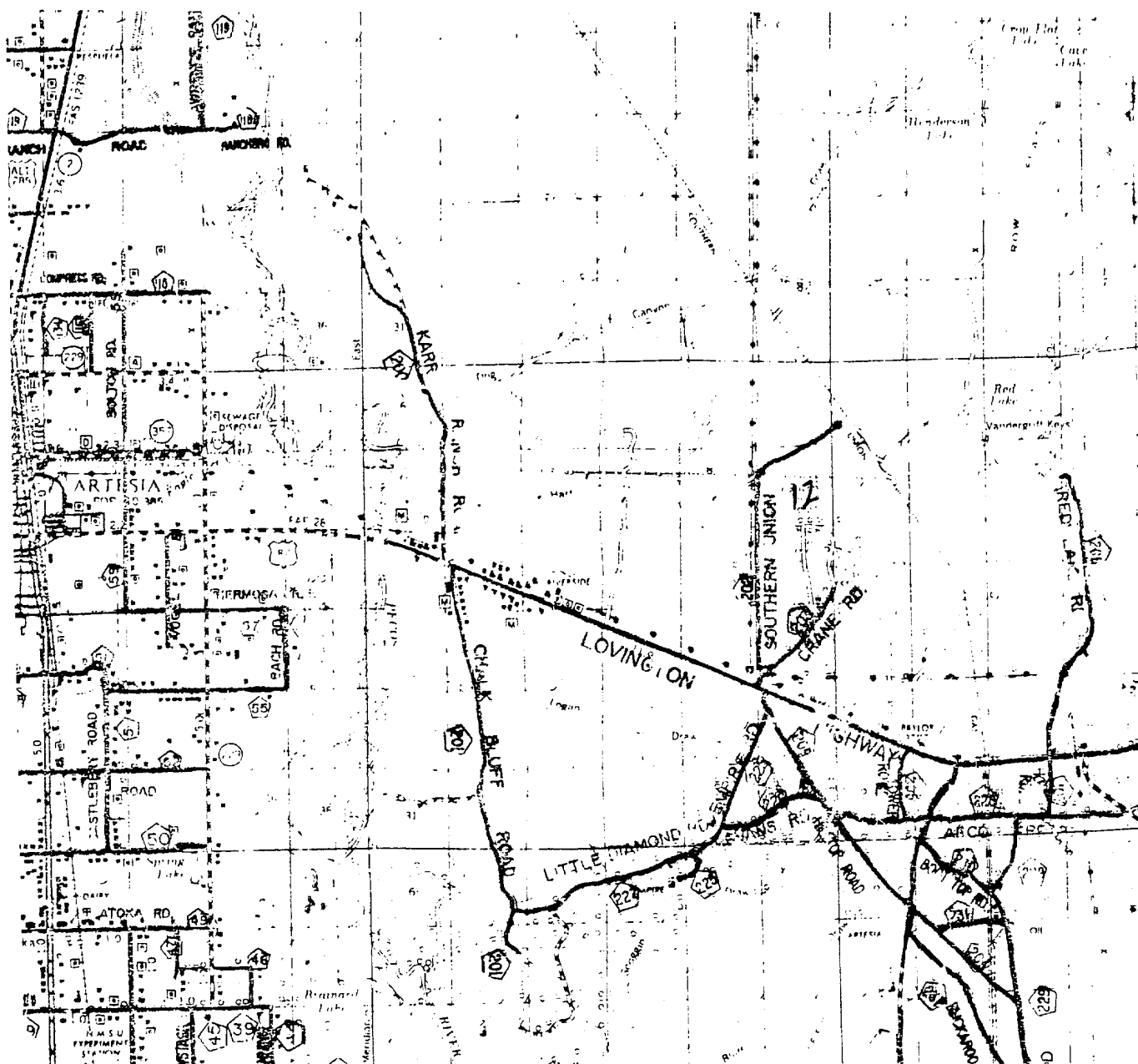
THE TROLL "7" COM No. 1 LOCATED 1980' FROM
 THE SOUTH LINE AND 1780' FROM THE EAST LINE OF
 SECTION 7, TOWNSHIP 17 SOUTH, RANGE 27 EAST,
 N.M.P.M., EDDY COUNTY, NEW MEXICO.

BASIN SURVEYS P.O. BOX 1786 - HOBBS, NEW MEXICO

W.O. Number: 1457 Drawn By: **K. GOAD**

Date: 05-10-2001 Disk: KJG CD#4 - 1457A.DWG

Survey Date: 05-08-2001 Sheet 1 of 1 Sheets



TROLL "7" COM. #1
 Located at 1980' FSL and 1780' FEL
 Section 7, Township 17 South, Range 27 East,
 N.M.P.M., Eddy County, New Mexico.

basin
surveys

focused on excellence
 in the oilfield

P.O. Box 1786
 1120 N. West County Rd.
 Hobbs, New Mexico 88241
 (505) 393-7316 - Office
 (505) 392-3074 - Fax
basinsurveys.com

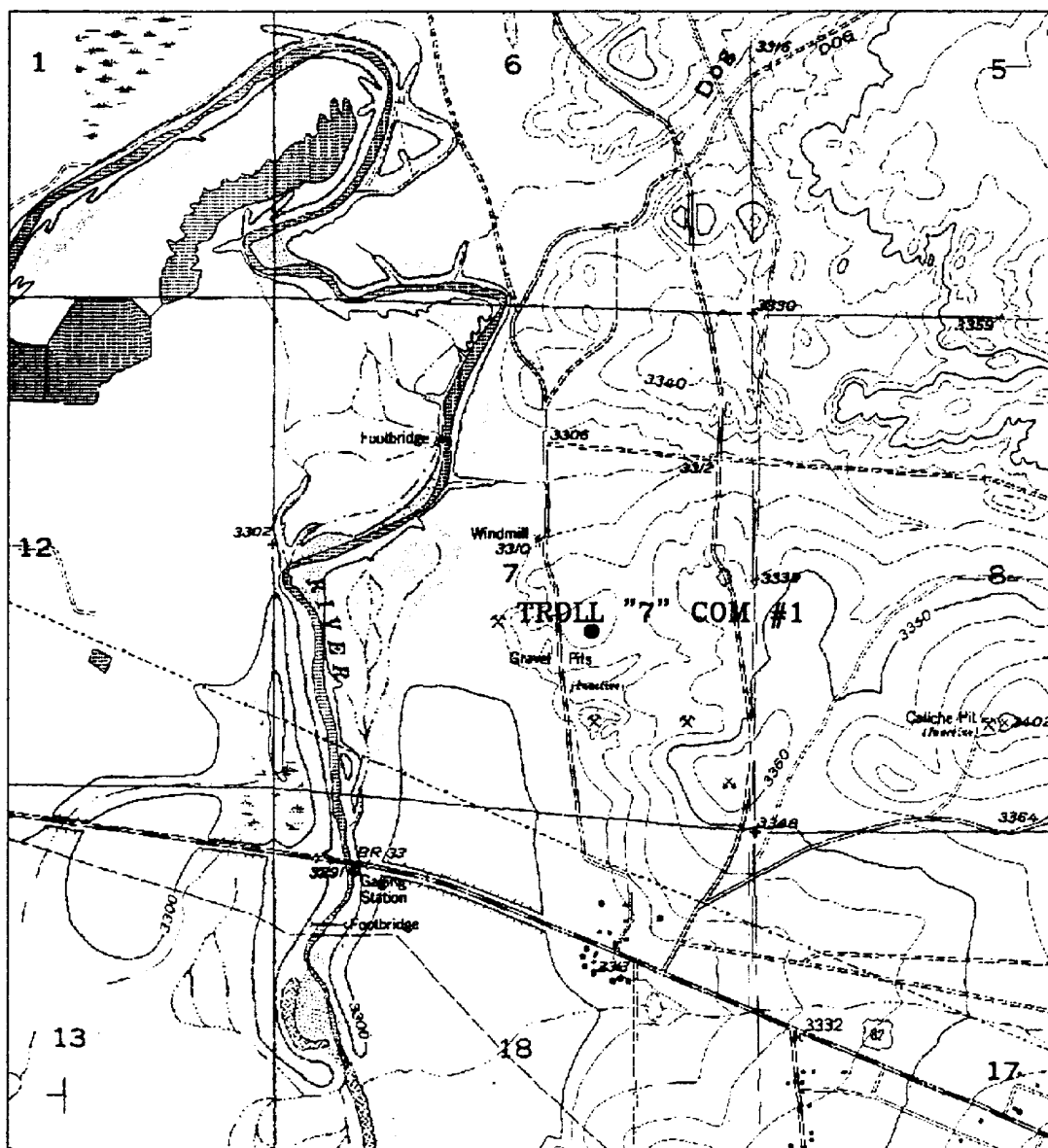
W.O. Number: 1457AA - KJG CD#5

Survey Date: 05-08-2001

Scale: 1" = 2 MILES

Date: 05-10-2001

CONCHO
RESOURCES,
INC.



TROLL "7" COM. #1

Located at 1980' FSL and 1780' FEL
 Section 7, Township 17 South, Range 27 East,
 N.M.P.M., Eddy County, New Mexico.

basin
surveys
 focused on excellence
 in the oilfield

P.O. Box 1786
 1120 N. West County Rd.
 Hobbs, New Mexico 88241
 (505) 393-7316 - Office
 (505) 392-3074 - Fax
 basinsurveys.com

W.O. Number: 1457AA - KJG CD#5

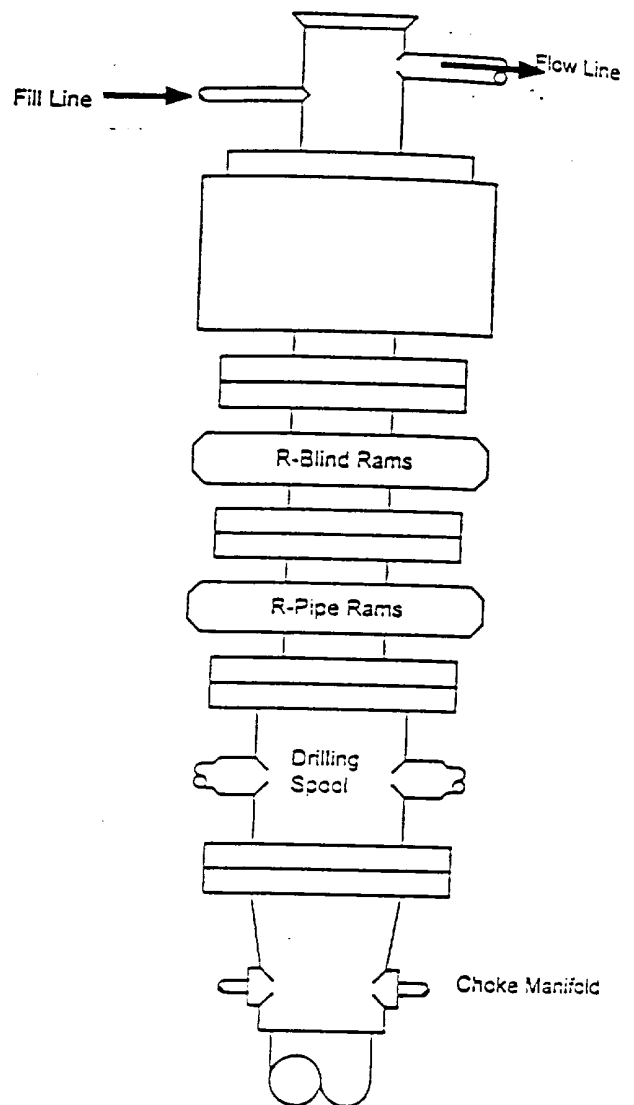
Survey Date: 05-08-2001

Scale: 1" = 2000'

Date: 05-10-2001

CONCHO
RESOURCES,
INC.

BLOWOUT PREVENTER SYSTEM



Type 900 Series
3000 psi WP.

Choke Manifold Assembly for 3M WP System

