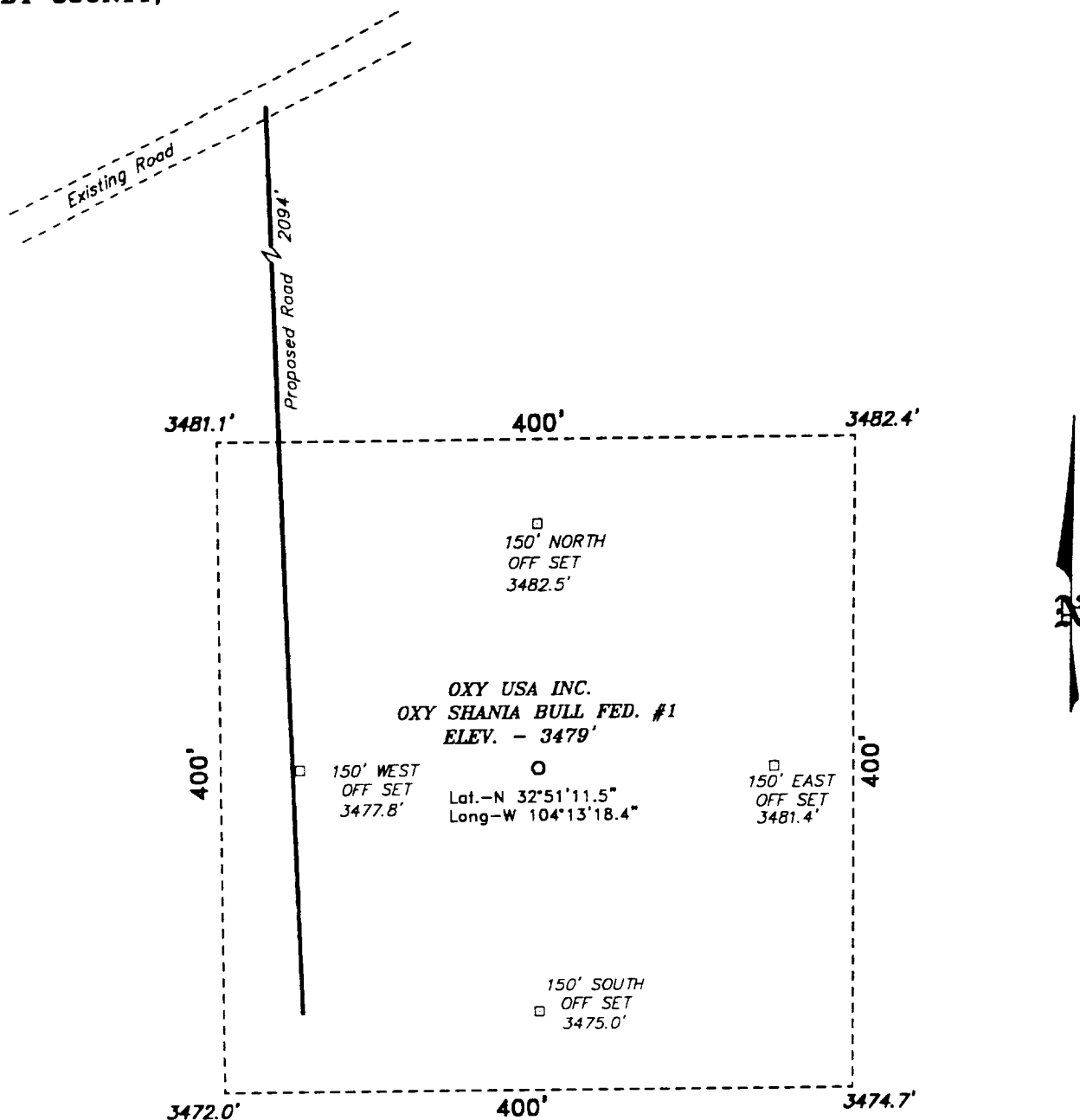


**SECTION 7, TOWNSHIP 17 SOUTH, RANGE 28 EAST, N.M.P.M.,  
EDDY COUNTY, NEW MEXICO.**



SCALE: 1" = 100'

## Directions to Location:

FROM THE JUNCTION OF CO. RD. 203 AND CO. RD. 204, GO NORTH ON 202 APPROX. 3.8 MILES TO A POINT WHICH LIES APPROX. 2094 FEET NORTH OF THE PROPOSED WELL LOCATION.

**OXY USA INC.**

REF: OXY SHANIA BULL FED.#1 / Well Pad Topo

THE OXY SHANIA BULL FED. No. 1 LOCATED 990' FROM THE NORTH LINE AND 660' FROM THE WEST LINE OF SECTION 7, TOWNSHIP 17 SOUTH, RANGE 28 EAST, N.M.P.M., EDDY COUNTY, NEW MEXICO.

**BASIN SURVEYS** P.O. BOX 1786 - HOBBS, NEW MEXICO

W.C. Number: 1221

Drawn By: K. GOAD

Date: 03-09-2001

Disk: KJG CD#4 - 1221A.DWG

Survey Date: 03-07-2001

Sheet 1 of 1 Sheets