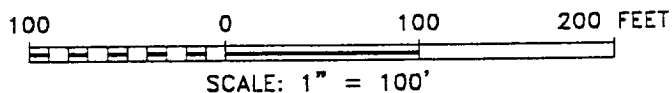
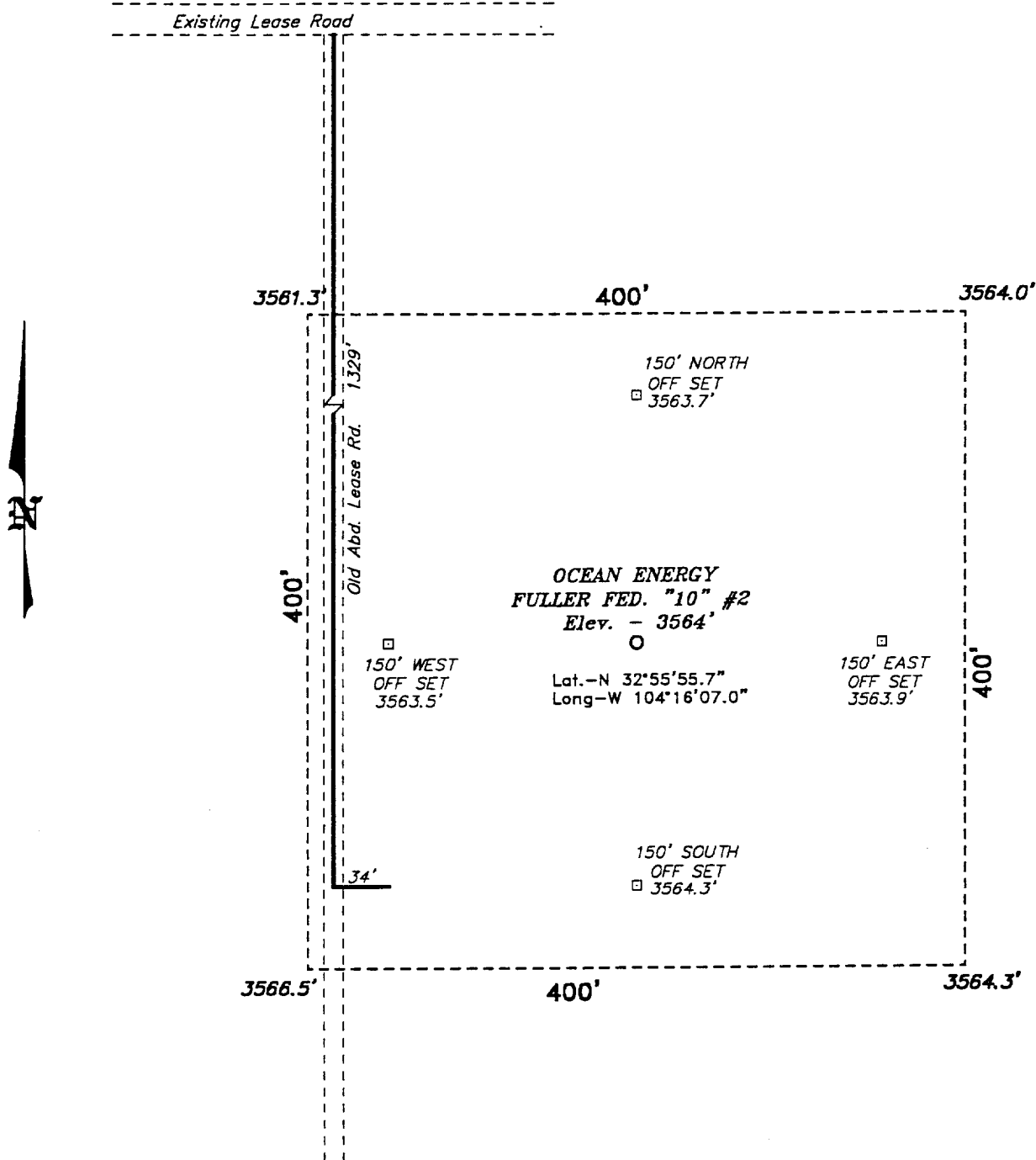


SECTION 10, TOWNSHIP 16 SOUTH, RANGE 27 EAST, N.M.P.M.,  
EDDY COUNTY, NEW MEXICO.



Directions to Location:

FROM THE JUNCTION OF US HWY 82 AND CO. RD. 203, GO NORTH ON 203 FOR APPROX. 0.25 MILE TO CO. RD. 202; THENCE WEST AND NORTH ON 202 FOR APPROX. 3.5 MILES TO A LEASE ROAD; THENCE NORTHEASTERLY ON LEASE ROAD FOR APPROX. 5.0 MILES TO A POINT WHICH LIES APPROX. 0.5 MILE FROM THE THE PROPOSED LOCATION.

**BASIN SURVEYS** P.O. BOX 1786 - HOBBS, NEW MEXICO

W.O. Number: 1317

Drawn By: **K. GOAD**

Date: 04-04-2001 Disk: KJG CD#4 - 1317A.DWG

**OCEAN ENERGY**

REF: Fuller Fed. "10" No. 2 / Well Pad Topo

THE FULLER FED. "10" No. 2 LOCATED 660' FROM THE SOUTH LINE AND 1980' FROM THE WEST LINE OF SECTION 10, TOWNSHIP 16 SOUTH, RANGE 27 EAST, N.M.P.M., EDDY COUNTY, NEW MEXICO.

Survey Date: 03-28-2001

Sheet 1 of 1 Sheets