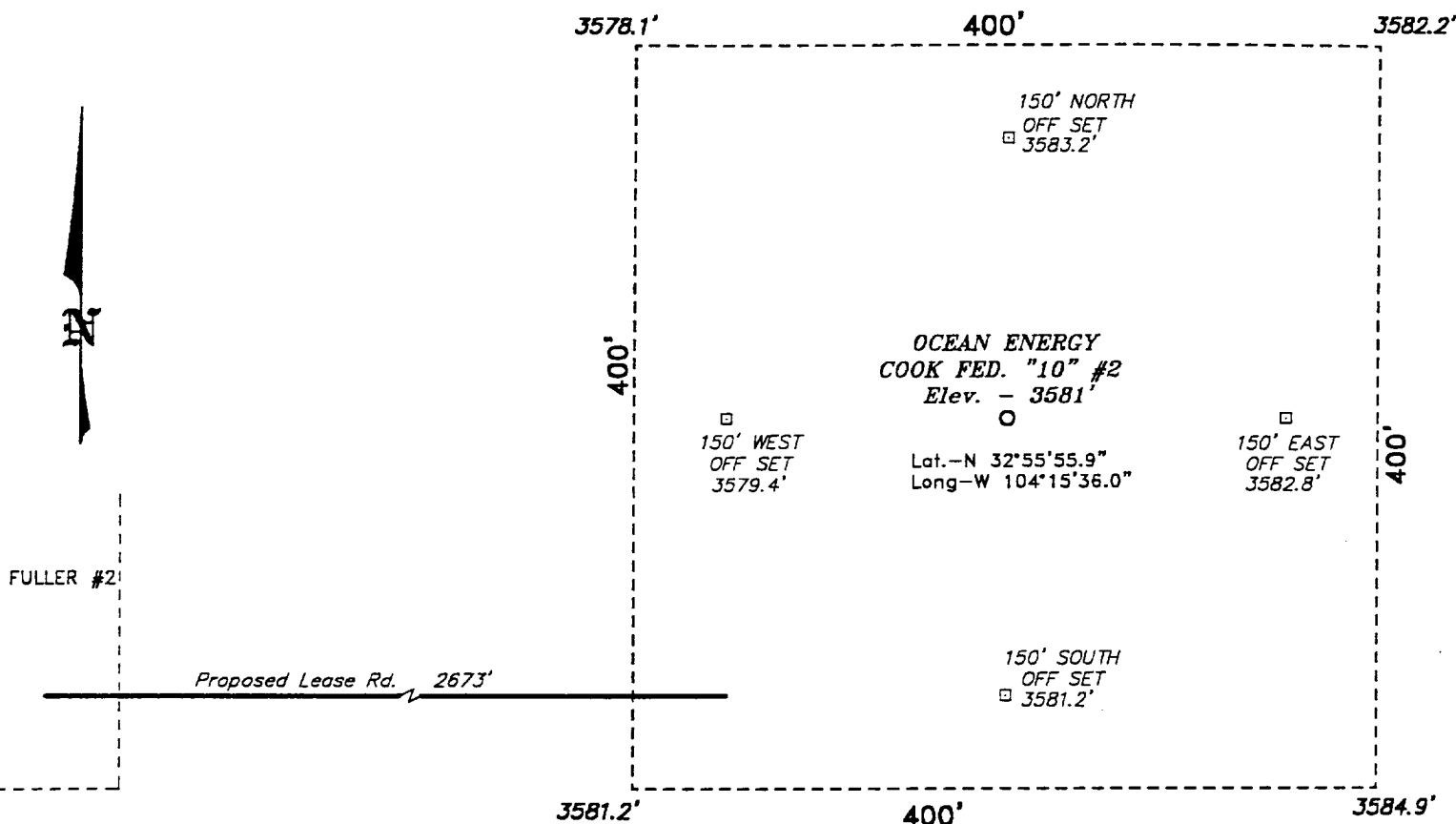
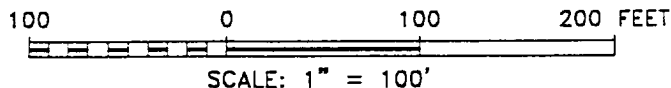


SECTION 10, TOWNSHIP 16 SOUTH, RANGE 27 EAST, N.M.P.M.,
EDDY COUNTY, NEW MEXICO.



Directions to Location:

FROM THE JUNCTION OF US HWY 82 AND CO. RD. 203, GO NORTH ON 203 FOR APPROX. 0.25 MILE TO CO. RD. 202; THENCE WEST AND NORTH ON 202 FOR APPROX. 3.5 MILES TO A LEASE ROAD; THENCE NORTHEASTERLY ON LEASE ROAD FOR APPROX. 5.0 MILES TO A POINT WHICH LIES APPROX. 0.5 MILE FROM THE THE PROPOSED LOCATION.



OCEAN ENERGY

REF: Cook Fed. "10" No. 2 / Well Pad Topo

THE COOK FED. "10" No. 2 LOCATED 660' FROM THE SOUTH LINE AND 660' FROM THE EAST LINE OF SECTION 10, TOWNSHIP 16 SOUTH, RANGE 27 EAST, N.M.P.M., EDDY COUNTY, NEW MEXICO.

Basin Surveys P.O. BOX 1786 -HOBBS, NEW MEXICO

W.O. Number: 1316

Drawn By: K. GOAD

Date: 04-04-2001 Disk: KJG CD#4 - 1316A.DWG

Survey Date: 03-28-2001

Sheet 1 of 1 Sheets