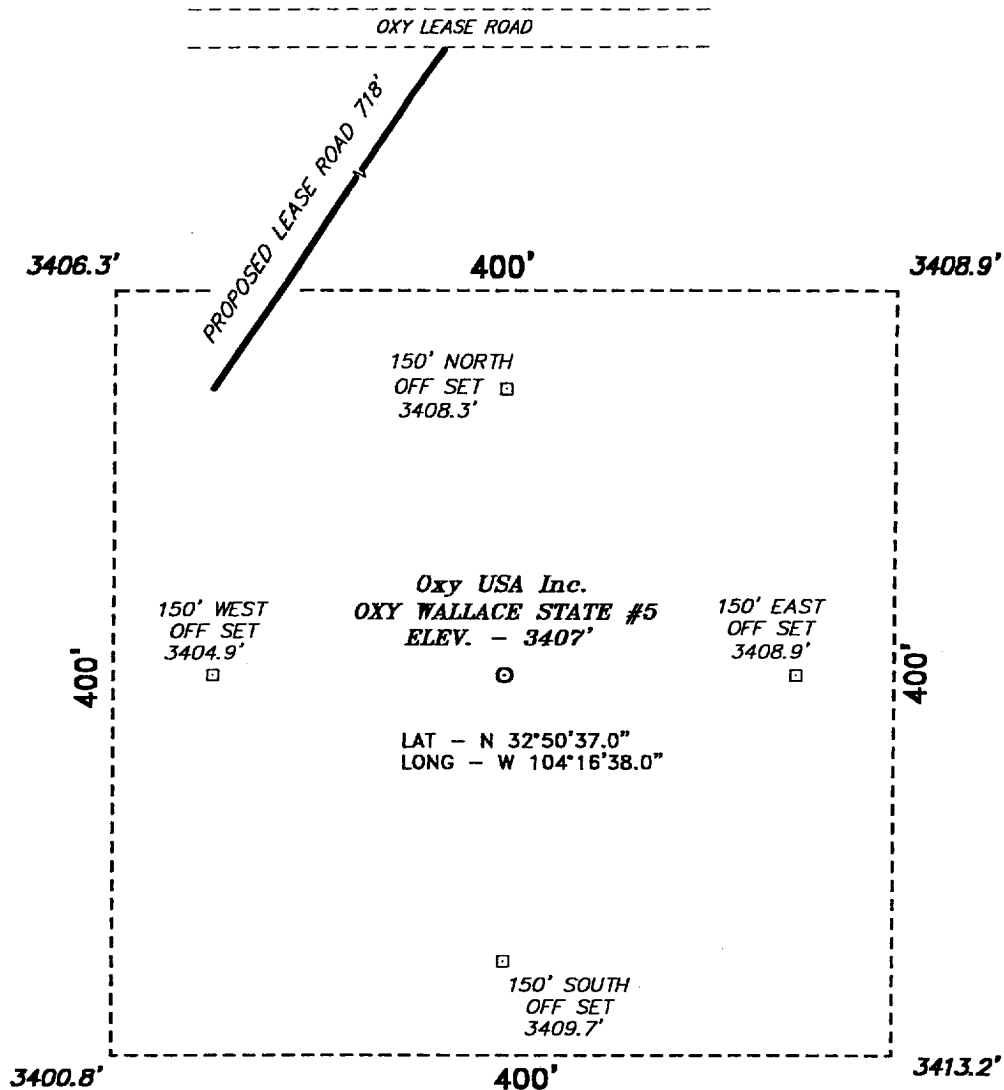
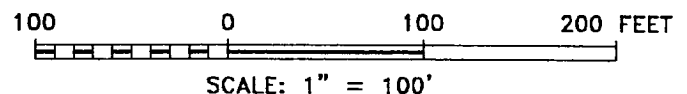


**SECTION 9, TOWNSHIP 17 SOUTH, RANGE 27 EAST, N.M.P.M.,
EDDY COUNTY, NEW MEXICO.**



DIRECTIONS TO LOCATION

FROM THE JUNCTION OF CO. RD. 200 AND US HWY 82, GO NORTH ON CO. RD. 200 APPROX. 1 MILE TO A LEASE ROAD; THENCE EAST ON LEASE ROAD APPROX. 2 MILES TO A PROPOSED LEASE ROAD.



OXY USA INC.

REF: Oxy WALLACE STATE. No. 5 / Well Pad Topo

THE OXY WALLACE STATE No. 5 LOCATED 760' FROM THE SOUTH LINE AND 660' FROM THE EAST LINE OF SECTION 9, TOWNSHIP 17 SOUTH, RANGE 27 EAST, N.M.P.M., EDDY COUNTY, NEW MEXICO.

BASIN SURVEYS P.O. BOX 1786—HOBBS, NEW MEXICO

W.O. Number: 0635

Drawn By: **C. JONES**

Date: 11-17-00

Disk: CLJ #1 - 0635A.DWG

Survey Date: 11-15-00

Sheet 1 of 1 Sheets