

District I
PO Box 1980, Hobbs, NM 88241-1980

District II
811 South First, Artesia, NM 88210

District III
1000 Rio Brazos Rd., Aztec, NM 87410

District IV
2040 South Pacheco, Santa Fe, NM 87505

State of New Mexico
Energy, Minerals & Natural Resources Department

OIL CONSERVATION DIVISION
2040 South Pacheco
Santa Fe, NM 87505

Form C-101
Revised October 18, 1994
Instructions on back
Submit to Appropriate District Office
State Lease - 6 Copies
Fee Lease - 5 Copies

☐ AMENDED REPORT

APPLICATION FOR PERMIT TO DRILL, RE-ENTER, DEEPEN, PLUGBACK, OR ADD A ZONE

¹ Operator Name and Address SDX Resources, Inc. PO Box 5061 Midland, TX 79704 915/685-1761		² OGRID Number 020451
		³ API Number 30-015-31920
⁴ Property Code 27087	⁵ Property Name Enron State	⁶ Well No. 2

⁷Surface Location

UL or lot no.	Section	Township	Range	Lot Idn	Feet from the	North/South line	Feet from the	East/West Line	County
D	32	17S	28E		990	North	990	West	Eddy

⁸Proposed Bottom Hole Location If Different From Surface

UL or lot no.	Section	Township	Range	Lot Idn	Feet from the	North/South line	Feet from the	East/West Line	County
⁹ Proposed Pool 1 Artesia QN-GB-SA <i>Glorieta yeso</i>					¹⁰ Proposed Pool 2				

¹¹ Work Type Code N	¹² Well Type Code O	¹³ Cable/Rotary R	¹⁴ Lease Type Code S	¹⁵ Ground Level Elevation 3699
¹⁶ Multiple No	¹⁷ Proposed Depth 4000	¹⁸ Formation QN-GB-SA	¹⁹ Contractor United Drilg	²⁰ Spud Date 08-15-01

²¹Proposed Casing and Cement Program

Hole Size	Casing Size	Casing weight/foot	Setting Depth	Sacks of Cement	Estimated TOC
12-1/4"	8-5/8"	24#	350	350 sx CI C	Surf
7-7/8"	5-1/2"	14#	4000	350 POZ 400 lte	Surf

²²Describe the proposed program. If this application is to DEEPEN or PLUG BACK give the data on the present productive zone and proposed new productive zone. Describe the blowout prevention program, if any. Use additional sheets if necessary.

Plan to drill a 12-1/4" hole to appx 350' & set 8-5/8" surf csg to 350'. Circ CI C cmt. Drill 7-7/8" hole to TD (4000'). Run OH logs. Run 5-1/2" csg & circ cmt. Perf the QN-GB-SA zone & stimulate as necessary for optimum production.

²³I hereby certify that the information given above is true and complete to the best of my knowledge and belief.

Signature:

Bonnie Atwater

Printed name: Bonnie Atwater

Title: Regulatory Tech

7/23/01

Bd OIL CONSERVATION DIVISION

Approved By:

ORIGINAL SIGNED BY TIM W. GUM

DISTRICT II SUPERVISOR

Title:

Approval Date:

JUL 26 2001

Expiration Date:

JUL 26 2002

District I

1625 N. French Dr., Hobbs, NM 88240

District II

811 South First, Artesia, NM 88210

District III

1906 Rio Brazos Rd., Aztec, NM 87410

District IV

2040 South Pacheco, Santa Fe, NM 87505

State of New Mexico
Energy, Minerals & Natural Resources**OIL CONSERVATION DIVISION**
2040 South Pacheco
Santa Fe, NM 87505

JUN 14 2001

Form C-102

Revised March 17, 1999

Submit to Appropriate District Office

State Lease - 4 Copies

Fee Lease - 3 Copies

☐ AMENDED REPORT**WELL LOCATION AND ACREAGE DEDICATION PLAT**

¹ API Number	² Pool Code 03230	³ Pool Name Artesia QN-GB-SA
⁴ Property Code 27087	⁵ Property Name ENRON STATE	⁶ Well Number 2
⁷ OGRID No. 020451	⁸ Operator Name SDX RESOURCES, INC.	⁹ Elevation 3699.

¹⁰ Surface Location

UL or lot no.	Section	Township	Range	Lot Idn	Feet from the	North/South line	Feet from the	East/West line	County
D	32	17-S	28-E		990	NORTH	990	WEST	EDDY

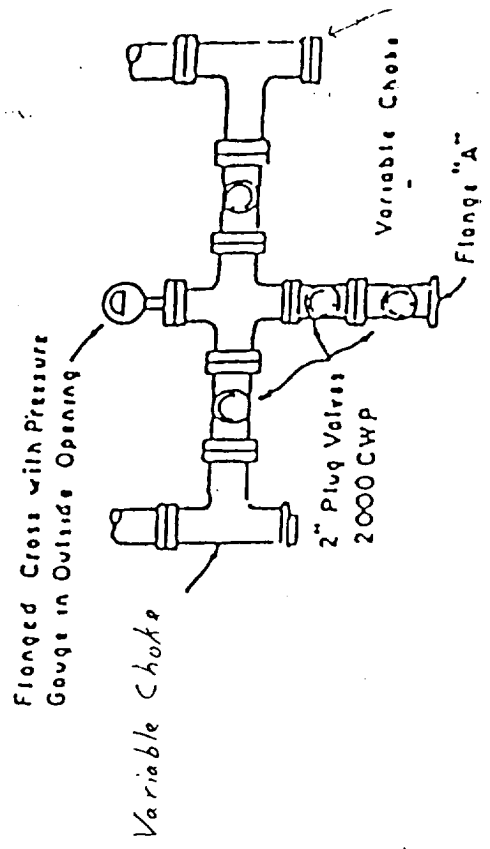
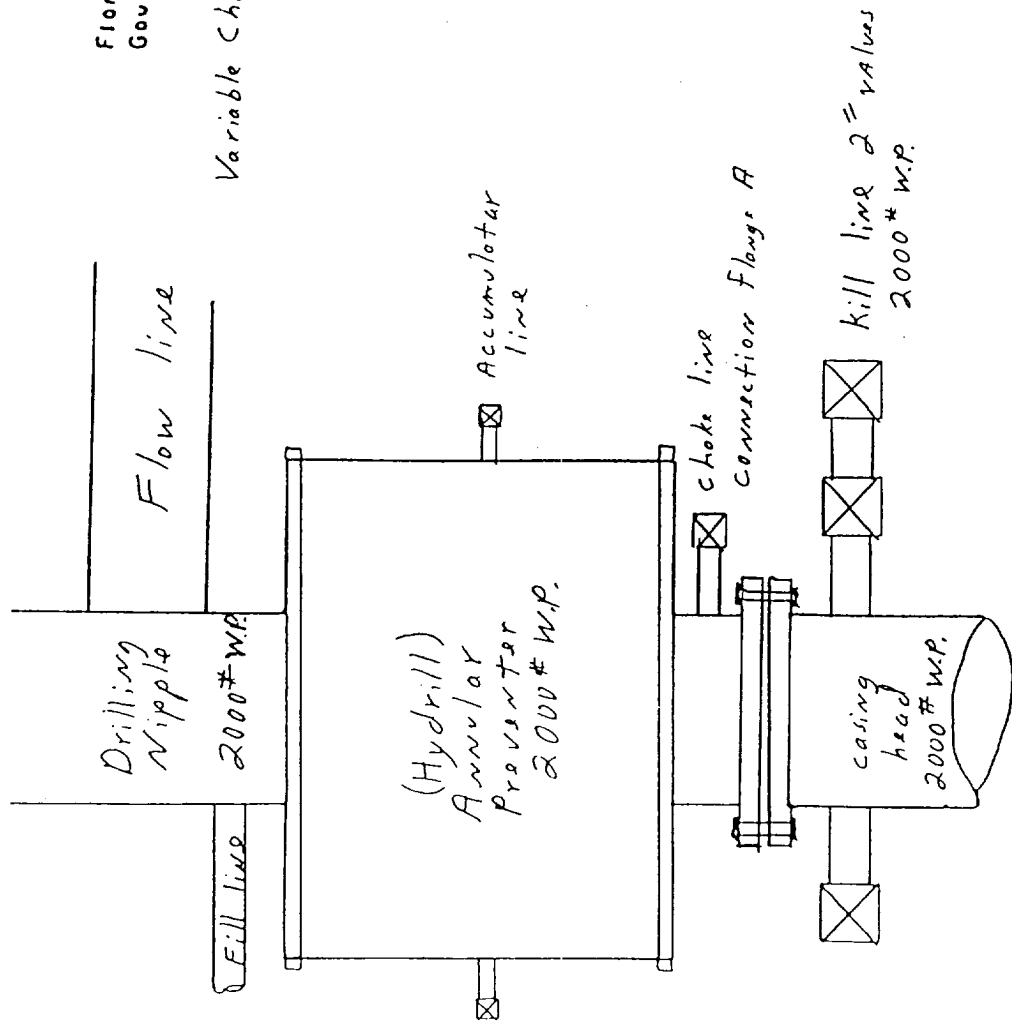
¹¹ Bottom Hole Location If Different From Surface

UL or lot no.	Section	Township	Range	Lot Idn	Feet from the	North/South line	Feet from the	East/West line	County

¹² Dedicated Acres 40	¹³ Joint or Infill	¹⁴ Consolidation Code	¹⁵ Order No.
-------------------------------------	-------------------------------	----------------------------------	-------------------------

NO ALLOWABLE WILL BE ASSIGNED TO THIS COMPLETION UNTIL ALL INTERESTS HAVE BEEN CONSOLIDATED OR A NON-STANDARD UNIT HAS BEEN APPROVED BY THE DIVISION

¹⁶				¹⁷ OPERATOR CERTIFICATION I hereby certify that the information contained herein is true and complete to the best of my knowledge and belief Signature <u>Bonnie Atwater</u> Printed Name Bonnie Atwater Title Regulatory Tech Date 7/23/01	
					¹⁸ SURVEYOR CERTIFICATION I hereby certify that the well location shown on this plat was plotted from field notes of actual surveys made by me or under my supervision, and that the same is true and correct to the best of my belief. JUNE 11 2001 Date of Survey Signature and Seal of Professional Surveyor



PLAN VIEW - CHOKE MANIFOLD

Exhibit #2