

District I
PO Box 1980 Hobbs, NM 88241-1980

District II
811 South First, Artesia, NM 88210

District III
1000 Rio Brazos Rd., Aztec, NM 87410

District IV
2040 South Pacheco, Santa Fe, NM 87505

State of New Mexico
Energy, Minerals & Natural Resources Department

OIL CONSERVATION DIVISION
2040 South Pacheco
Santa Fe, NM 87505

Form C-101

Revised October 18, 1994

Instructions on back

Submit to Appropriate District Office

State Lease - 6 Copies

Fee Lease - 5 Copies

☐ AMENDED REPORT

APPLICATION FOR PERMIT TO DRILL, RE-ENTER, DEEPEN, PLUG BACK, OR ADD A ZONE

Operator Name and Address MARBOB ENERGY CORPORATION PO BOX 227 ARTESIA, NM 88210		OGRID Number 14049
Property Code 28571		API Number 30-0 15-31894
Property Name STATE 25		Well No. 2

Surface Location

UL or lot no.	Section	Township	Range	Lot Idn	Feet from the	North/South line	Feet from the	East/West Line	County
p	25	17S	27E		455	SOUTH	990	EAST	EDDY

Proposed Bottom Hole Location If Different From Surface

UL or lot no.	Section	Township	Range	Lot Idn	Feet from the	North/South line	Feet from the	East/West Line	County
Proposed Pool 1 LOGAN DRAW WOLFCAMP					Proposed Pool 2				

Work Type Code N	Well Type Code O	Cable/Rotary R	Lease Type Code S	Ground Level Elevation 3603
Multiple No	Proposed Depth 8200	Formation WOLFCAMP	Contractor AFT #2	Spud Date 09-14-01

Proposed Casing and Cement Program

Hole Size	Casing Size	Casing weight/foot	Setting Depth	Sacks of Cement	Estimated TOC
12 1/4"	8 5/8"	24#	400'	325	SURF
7 7/8"	5 1/2"	14#	8200'	1200	SURF

Describe the proposed program. If this application is to DEEPEN or PLUG BACK give the data on the present productive zone and proposed new productive zone. Describe the blowout prevention program, if any. Use additional sheets if necessary.

PLAN TO DRILL A 12 1/4" HOLE TO APPROXIMATELY 400' & SET 8 5/8" SURFACE CASING TO 400'. CIRC CL C CMT. DRILL 7 7/8" HOLE TO TD (8200'). RUN OH LOGS. RUN 5 1/2" CASING & CIRC CMT. PERF THE WOLFCAMP ZONE & STIMULATE AS NECESSARY FOR OPTIMUM PRODUCTION.

I hereby certify that the information given above is true and complete to the best of my knowledge and belief.

Signature:

Printed name: DIANA J. CANNON

Title: PRODUCTION ANALYST

Date: 09-10-01

Phone: 505-748-3303

OIL CONSERVATION DIVISION

Approved By:

ORIGINAL SIGNED BY TIM W. GUM

Title:

DISTRICT II SUPERVISOR

Approval Date:

SEP 13 2001

Expiration Date:

SEP 13 2002

Conditions of Approval:

Attached: ☐

State of New Mexico

DISTRICT I

P.O. Box 1980, Hobbs, NM 88241-1980

Energy, Minerals and Natural Resources Department

Form C-102

Revised February 10, 1994

Submit to Appropriate District Office

State Lease - 4 Copies

Fee Lease - 3 Copies

DISTRICT II

P.O. Drawer DD, Artesia, NM 88211-0719

OIL CONSERVATION DIVISION

P.O. Box 2088

Santa Fe, New Mexico 87504-2088

DISTRICT III

1000 Rio Brazos Rd., Aztec, NM 87410

DISTRICT IV

P.O. BOX 2088, SANTA FE, N.M. 87504-2088

WELL LOCATION AND ACREAGE DEDICATION PLAT

☐ AMENDED REPORT

API Number		Pool Code	Pool Name LOGAN DRAW WOLFCAMP
Property Code	Property Name STATE "25"		Well Number 2
OGRID No. 14049	Operator Name MARBOB ENERGY CORPORATION		Elevation 3603'

Surface Location

UL or lot No.	Section	Township	Range	Lot Idn	Feet from the	North/South line	Feet from the	East/West line	County
P	25	17-S	27-E		455	SOUTH	990	EAST	EDDY

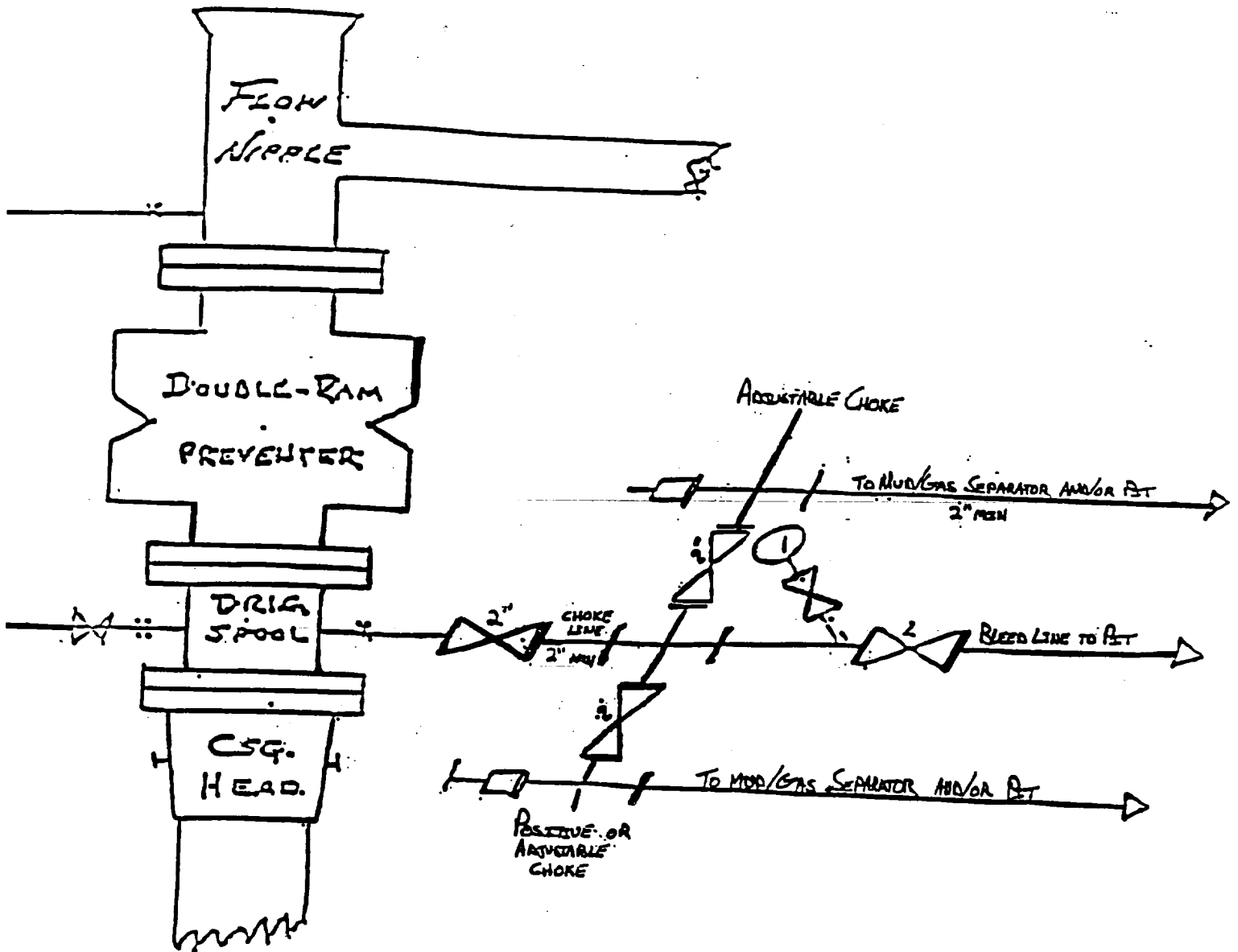
Bottom Hole Location If Different From Surface

UL or lot No.	Section	Township	Range	Lot Idn	Feet from the	North/South line	Feet from the	East/West line	County
Dedicated Acres 40		Joint or Infill		Consolidation Code		Order No.			

NO ALLOWABLE WILL BE ASSIGNED TO THIS COMPLETION UNTIL ALL INTERESTS HAVE BEEN CONSOLIDATED OR A NON-STANDARD UNIT HAS BEEN APPROVED BY THE DIVISION

	<p>OPERATOR CERTIFICATION</p> <p>I hereby certify the the information contained herein is true and complete to the best of my knowledge and belief.</p> <p><i>[Signature]</i> Signature</p> <p>DIANA J. CANNON Printed Name</p> <p>PRODUCTION ANALYST Title</p> <p>SEPTEMBER 10, 2001 Date</p>	
	<p>SURVEYOR CERTIFICATION</p> <p>I hereby certify that the well location shown on this plat was plotted from field notes of actual surveys made by me or under my supervision, and that the same is true and correct to the best of my belief.</p> <p>SEPTEMBER 5, 2001 Date Surveyed</p> <p>AWB Signature & Seal of Professional Surveyor</p> <p><i>[Signature]</i> 9/06/01 01.11.1009</p> <p>Certificate No. RONALD J. KIDSON 3239 GARY KIDSON 12641</p>	

BLOW OUT PREVENTER AND CHOKE MANIFOLD



10"/900 Cameron SS Space Saver
3000# Working Pressure
3000# Working Pressure Choke Manifold