

District I
PO Box 1980, Hobbs, NM 88241-1980
District II
811 S. 1st Street, Artesia, NM 88210-2834
District III
1000 Rio Brazos Rd., Aztec, NM 87410
District IV
2040 South Pacheco, Santa Fe, NM 87505

State of New Mexico
Energy, Minerals & Natural Resources Department

OIL CONSERVATION DIVISION
2040 South Pacheco
Santa Fe, NM 87505

015F
Bbm
SFhd
AP

Form C-101
Revised October 18, 1994
Instructions on back
Submit to Appropriate District Office
State Lease - 6 Copies
Fee Lease - 5 Copies

☐ AMENDED REPORT

APPLICATION FOR PERMIT TO DRILL, RE-ENTER, DEEPEN, PLUGBACK, OR ADD A ZONE

¹ Operator name and Address OXY USA WTP Limited Partnership P.O. Box 50250 Midland, TX 79710-0250		² OGRID Number 192463
⁴ Property Code 27699	⁵ Property Name OXY Sweet & Sour State	³ API Number 30-0 15-32099
		⁶ Well No. # 4

⁷ Surface Location

UL or lot no.	Section	Township	Range	Lot. Idn	Feet from the	North/South Line	Feet from the	East/West line	County
J	24	17S	27E		1980	south	1980	east	Eddy

⁸ Proposed Bottom Hole Location If Different From Surface

UL or lot no.	Section	Township	Range	Lot. Idn	Feet from the	North/South Line	Feet from the	East/West line	County

⁹ Proposed Pool 1 Undesignated Logan Draw Wolfcamp	¹⁰ Proposed Pool 2 96960
---	---

¹¹ Work Type Code N	¹² Well Type Code O	¹³ Cable/Rotary R	¹⁴ Lease Type Code S - B-2029	¹⁵ Ground Level Elevation 3492'
¹⁶ Multiple No	¹⁷ Proposed Depth 7200'	¹⁸ Formation Wolfcamp	¹⁹ Contractor Patterson	²⁰ Spud Date 11/26/01

²¹ Proposed Casing and Cement Program

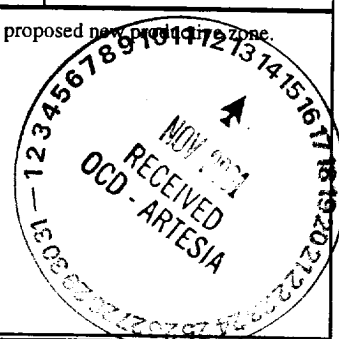
Hole Size	Casing Size	Casing weight/foot	Setting Depth	Sacks of Cement	Estimated TOC
17-1/2"	13-3/8"	48#	400'	360	Surface
11"	8-5/8"	32#	1800'	550	Surface
7-7/8"	5-1/2"	17#	7200'	400	5200'

²² Describe the proposed program. If this application is to DEEPE!
Describe the blowout prevention program, if any. Use additional st

and proposed new production zone.

Cement to cover all oil, gas & water
bearing zones.

SEE OTHER SIDE



²³ I hereby certify that the information given above is true and complete to the best
of my knowledge and belief.

Signature:

David Stewart

Printed name: **David Stewart**

Title: **Sr. Regulatory Analyst**

BK OIL CONSERVATION DIVISION

Approved by:

ORIGINAL SIGNED BY TIM W. GUM
DISTRICT II SUPERVISOR

Title:

Approval Date **NOV 14 2001**

Expiration Date **NOV 14 2002**

OXY Sweet & Sour State #4
1980 FSL 1980 FEL NWSE(J) SEC 24 T17S R27E Eddy County, NM
STATE LEASE No. B-2029

PROPOSED TD: 7200' TVD

BOP PROGRAM: 0' - 400' None

400' - 1800' 11" 5M blind and pipe rams with 5M annular preventer.

1800' - 7200' 11" 5M blind pipe rams with 5M annular preventer and rotating head below 6000'.

CASING: Surface: 13-3/8" OD 48# H40 ST&C new casing set at 400'

Intermediate: 8-5/8" OD 32# K55 ST&C new casing from 0-1800'

Production: 5-1/2" OD 17# N80 LT&C new casing from 0-7200'

CEMENT: Surface - Circulate cement with 160sx 35:65 POZ/C with 6% Bentonite + 2% CaCl_2 + .25#/sx Cello-Seal followed by 200sx Cl C with 2% CaCl_2 .

Intermediate - Circulate cement with 350sx 35:65 POZ/C with 6% Bentonite + 2% CaCl_2 + .25#/sx Cello-Seal followed by 200sx Cl C with 2% CaCl_2 .

Production - Cement with 300sx 15:61:11 POZ/C/CSE with .5% FL-52 + .5% FL-25 + 8#/sx Gilsonite followed by 100sx Cl C with .7% FL-25.

Estimated top of cement is 5200'.

Note: Cement volumes may need to be adjusted to hole caliper.

MUD: 0 - 400' Fresh water/native mud. Lime for pH control (9-10). Paper for seepage. Wt 8.7-9.2 ppg, Vis 32-34 sec

400' - 1800' Fresh/*Brine water. Lime for pH control (10.0-10.5). Paper for seepage. Wt 8.3-9.0/10.0-10.1ppg, Vis 28-29 sec
*Fresh water will be used unless chlorides in the mud system increases to 20000ppm.

1800' - 5000' Fresh water. Lime for pH control (9-9.5). Paper for seepage. Wt 8.3-8.5 ppg, Vis 28-29 sec

5000' - 7200' Cut brine. Lime for pH control (10-10.5). Wt 9.6-10.0 ppg, Vis 28-29sec

DISTRICT I
1825 N. French Dr., Hobbs, NM 88240

DISTRICT II
811 South First, Artesia, NM 88210

DISTRICT III
1000 Rio Brazos Rd., Artec, NM 87410

DISTRICT IV
2040 South Pacheco, Santa Fe, NM 87505

State of New Mexico
Energy, Minerals and Natural Resources Department

Form C-102
Revised March 17, 1999

Submit to Appropriate District Office
State Lease - 4 Copies
Fee Lease - 3 Copies

OIL CONSERVATION DIVISION

2040 South Pacheco
Santa Fe, New Mexico 87504-2088

☐ AMENDED REPORT

WELL LOCATION AND ACREAGE DEDICATION PLAT

API Number 30-015-	Pool Code 96960	Pool Name Undesignated Logan Draw Wolfcamp
Property Code	Property Name OXY SWEET AND SOUR STATE	Well Number 4
OGRID No. 192463	Operator Name OXY USA WTP, L.P.	Elevation 3492'

Surface Location

UL or lot No.	Section	Township	Range	Lot Idn	Feet from the	North/South line	Feet from the	East/West line	County
J	24	17 S	27 E		1980	SOUTH	1980	EAST	EDDY

Bottom Hole Location If Different From Surface

UL or lot No.	Section	Township	Range	Lot Idn	Feet from the	North/South line	Feet from the	East/West line	County

Dedicated Acres 40	Joint or Infill N	Consolidation Code	Order No.
-----------------------	----------------------	--------------------	-----------

NO ALLOWABLE WILL BE ASSIGNED TO THIS COMPLETION UNTIL ALL INTERESTS HAVE BEEN CONSOLIDATED
OR A NON-STANDARD UNIT HAS BEEN APPROVED BY THE DIVISION

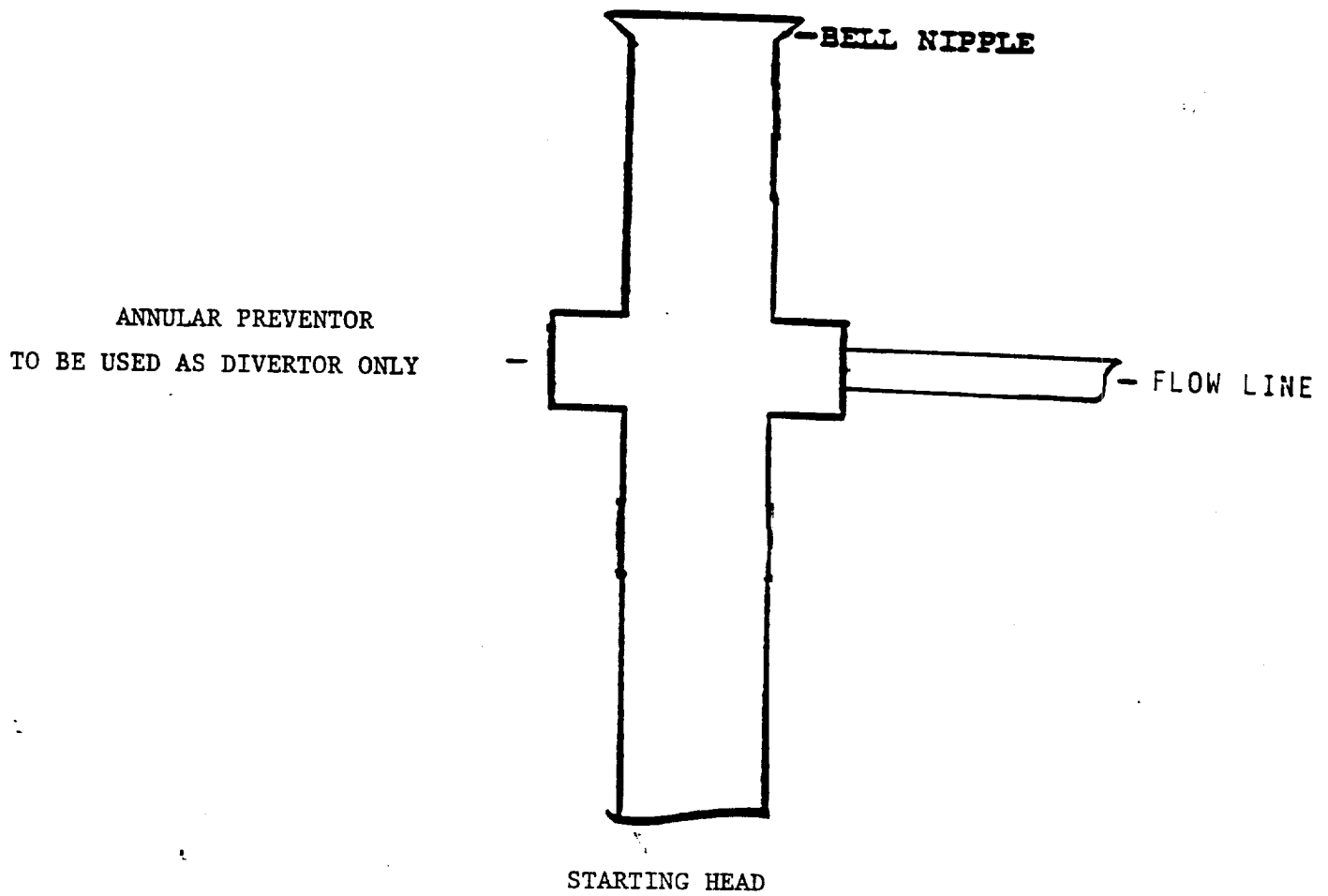
	<p>OPERATOR CERTIFICATION</p> <p>I hereby certify that the information contained herein is true and complete to the best of my knowledge and belief.</p> <p></p> <p>Signature</p> <p>David Stewart</p> <p>Printed Name</p> <p>Sr. Regulatory Analyst</p> <p>Title</p> <p>11/13/01</p> <p>Date</p>
	<p>SURVEYOR CERTIFICATION</p> <p>I hereby certify that the well location shown on this plat was plotted from field notes of actual surveys made by me or under my supervision, and that the same is true and correct to the best of my belief.</p> <p>August 21, 2001</p> <p>Date Surveyed</p> <p></p> <p>Signature & Seal of Professional Surveyor</p> <p>W.O. No. 1786A</p> <p>Certificate No. Garry L. Jones 7977</p> <p>BASIN SURVEYS</p>

1. Gas Well Services Inc.
Schneider #1
30-015-22907
2. Otis A. Roberts (H&S Oil Co.)
State A-1 (Schneider St-1)
30-015-00494
3. Simms & Reese
Schneider St #2
30-015-00511

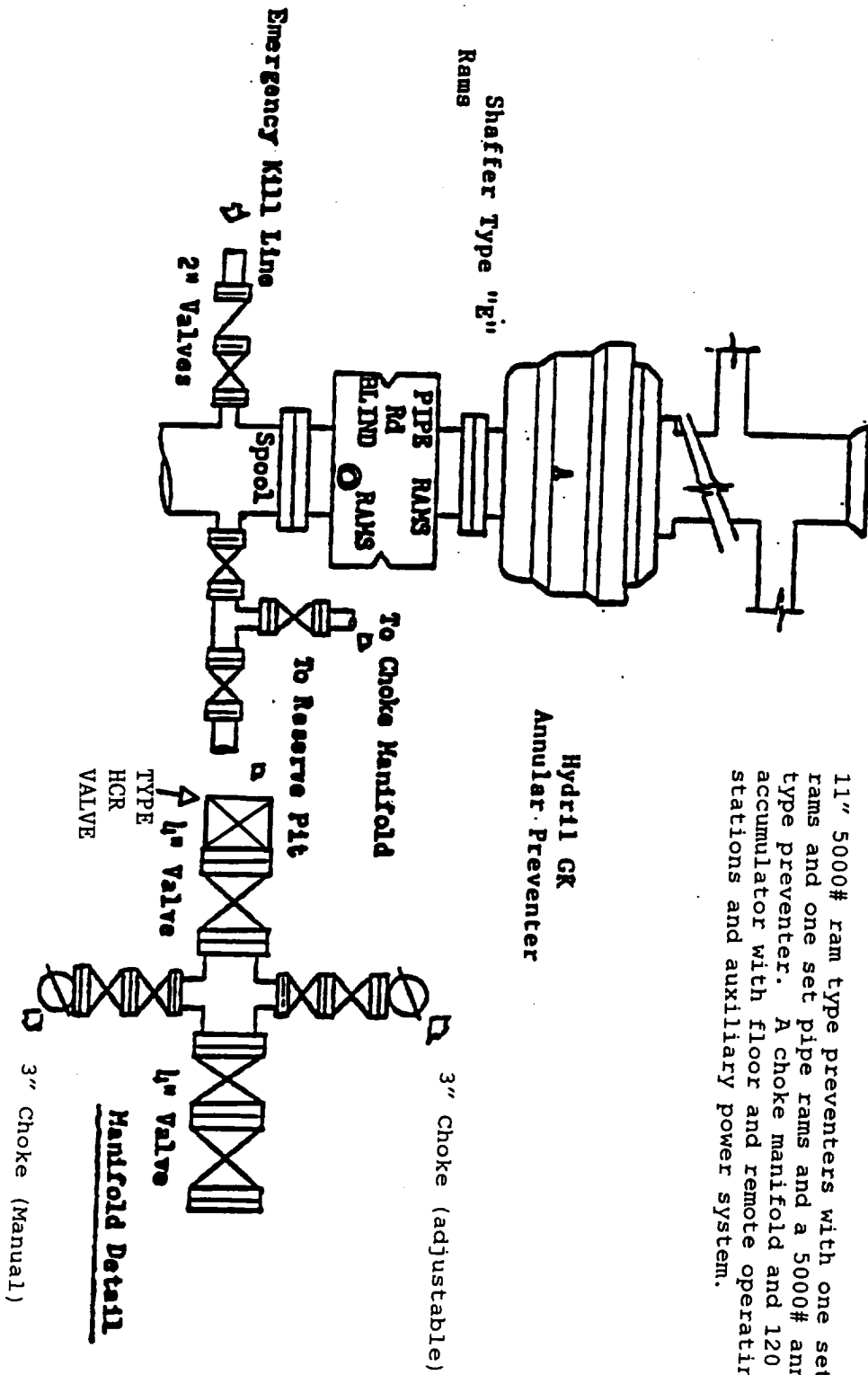
• •

•

EXHIBIT A



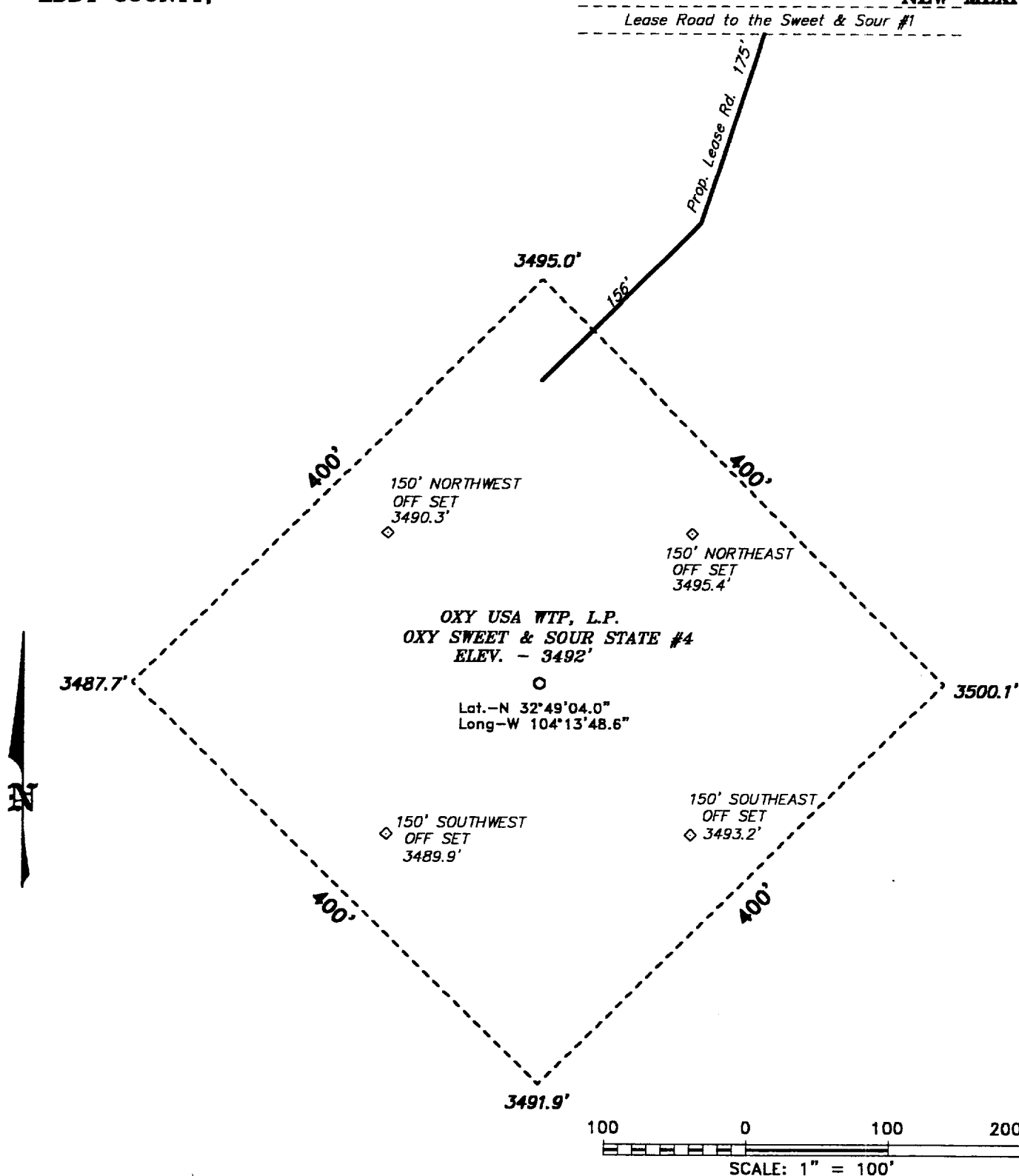
BLOWOUT PREVENTOR SCHEME



11" 5000# ram type preventers with one set blind rams and one set pipe rams and a 5000# annular type preventer. A choke manifold and 120 gallon accumulator with floor and remote operating stations and auxiliary power system.

**SECTION 24, TOWNSHIP 17 SOUTH, RANGE 27 EAST, N.M.P.M.,
EDDY COUNTY, NEW MEXICO.**

Lease Road to the Sweet & Sour #1



Directions to Location:

FROM THE JUNCTION OF US HWY 82 AND CO. RD. 203, GO NORTHEASTERLY ON 203 FOR APPROX. 0.75 MILE TO A LEASE ROAD; THENCE WEST ON LEASE ROAD FOR APPROX. 500 FEET TO A PROPOSED LEASE ROAD.

BASIN SURVEYS P.O. BOX 1786-HOBBS, NEW MEXICO

W.O. Number: 1766

Drawn By: **K. GOAD**

Date: 08-31-2001

Disk: KJG CD#5 - 1766A.DWG

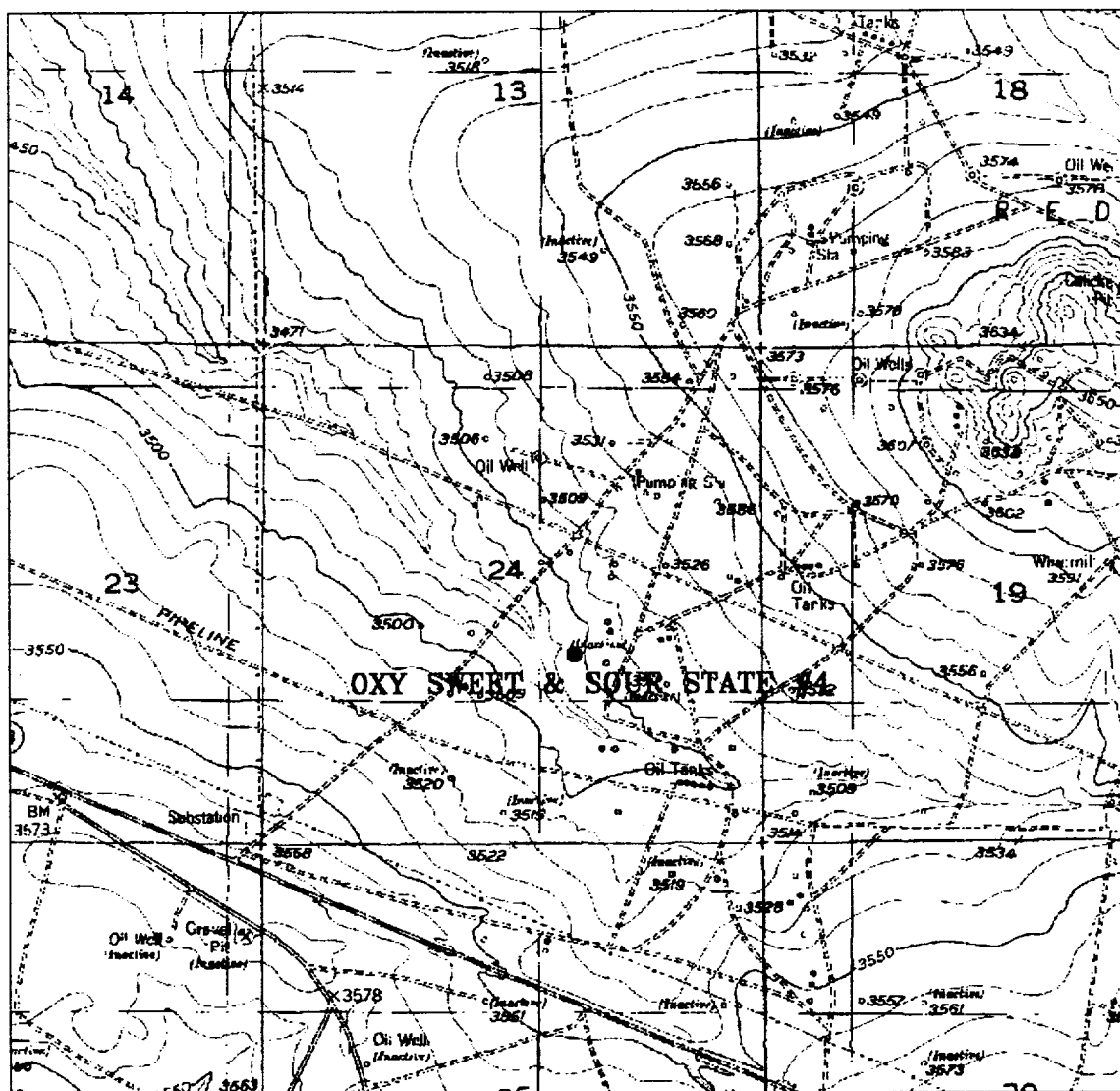
OXY USA WTP, L.P.

REF: OXY SWEET & SOUR STATE #4 / Well Pad Topo

THE OXY SWEET & SOUR STATE No. 4 LOCATED 1980' FROM THE SOUTH LINE AND 1980' FROM THE EAST LINE OF SECTION 24, TOWNSHIP 17 SOUTH, RANGE 27 EAST, N.M.P.M., EDDY COUNTY, NEW MEXICO.

Survey Date: 08-21-2001

Sheet 1 of 1 Sheets



OXY SWEET & SOUR STATE #4
 Located at 1980' FSL and 1980' FEL
 Section 24, Township 17 South, Range 27 East,
 N.M.P.M., Eddy County, New Mexico.

basin
surveys

focused on excellence
 in the oilfield

P.O. Box 1786
 1120 N. West County Rd.
 Hobbs, New Mexico 88241
 (505) 393-7316 - Office
 (505) 392-3074 - Fax
 basinsurveys.com

W.O. Number: 1766AA - KJG CD#4

Survey Date: 08-21-2001

Scale: 1" = 2000'

Date: 08-29-2001

OXY USA
WTP, L.P.