

1625 N. French Dr., Hobbs, NM 88240  
District II  
811 South First, Artesia, NM 88210  
District III  
1000 Rio Brazos Road, Aztec, NM 87410  
District IV  
2040 South Pacheco, Santa Fe, NM 87505

STATE OF NEW MEXICO  
Energy Minerals and Natural Resources

Oil Conservation Division  
2040 South Pacheco  
Santa Fe, NM 87505

Form C-101  
Revised March 17, 1999

Submit to appropriate District Office  
State Lease - 6 Copies  
Fee Lease - 5 Copies

☐ AMENDED REPORT

CISE  
BLM  
Std  
Op

APPLICATION FOR PERMIT TO DRILL, RE-ENTER, DEEPEN, PLUGBACK, OR ADD A ZONE

Operator Name and Address CONCHO OIL & GAS CORP. 110 WEST LOUISIANA SUITE 410 MIDLAND, TEXAS 79701		OGRID Number 193407
Property Code 30050		API Number 30-015-32377
Property Name CROW FLATS "11" STATE COM.		Well No. 2

Surface Location

UL or lot no.	Section	Township	Range	Lot Idn	Feet from the	North/South line	Feet from the	East/West line	County
0	11	16S	28E		660'	SOUTH	1980'	EAST	EDDY CO.

Proposed Bottom Hole Location If Different

UL or lot no.	Section	Township	Range	Lot Idn	Feet from the	North
Proposed Pool 1 DIAMOND MOUND-MORROW (76079)						

Cement to cover all oil, gas and water bearing zones.

Work Type Code N	Well Type Code G	Cable/Rotary ROTARY	Lease Type Code S	Ground Level Elevation 3549'
Multiple NO	Proposed Depth 9800'	Formation MISSISSIPPIAN	Contractor UNKNOWN	Spud Date WHEN APPROVED

Proposed Casing and Cement Program

Hole Size	Casing Size	Casing weight/foot	Setting Depth	Sacks of Cement	Estimated TOC
25"	20"	NA	40'	Redi-mix	SURFACE
17½"	13 3/8"	48	350'	400 Sx.	SURFACE
12¼"	8 5/8"	32	2000'	800 Sx.	SURFACE
7 7/8"	4½"	11.6	9800'	900 Sx	6000' from surface

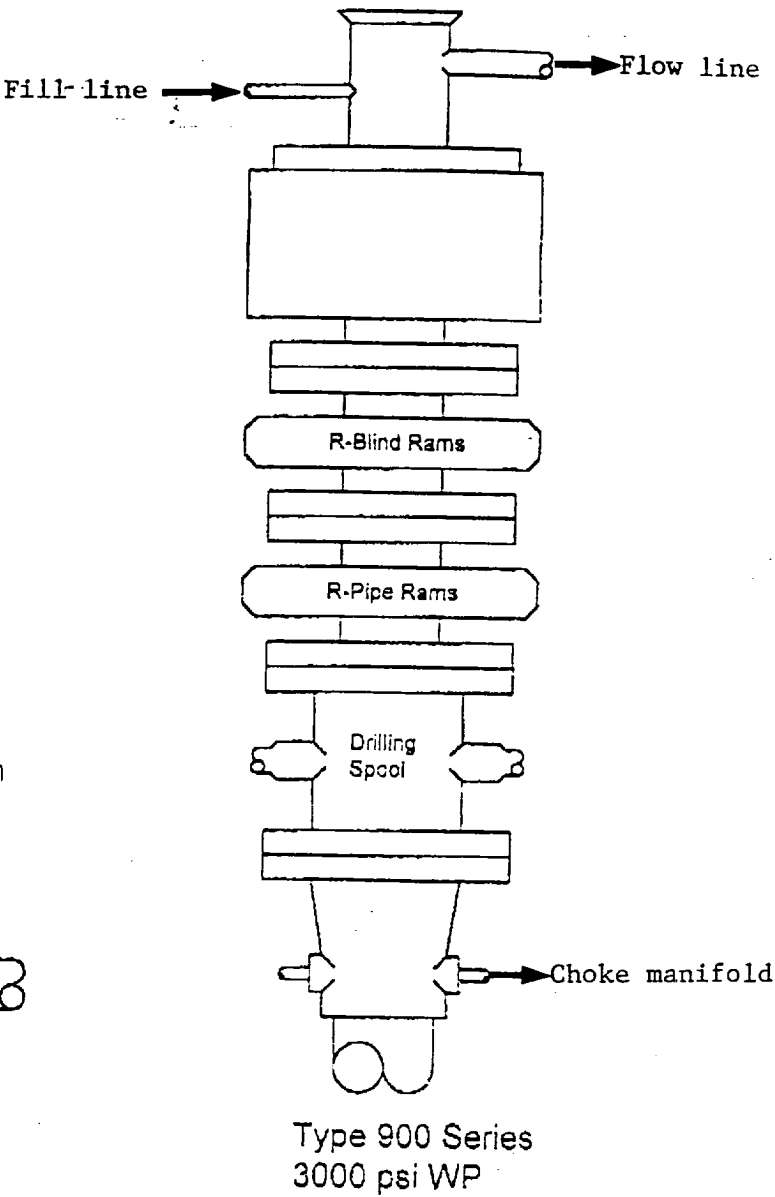
Describe the proposed program. If this application is to DEEPEN or PLUG BACK, give the data on the present productive zone and proposed new productive zone.

Describe the blowout prevention program, if any. Use additional sheets if necessary.

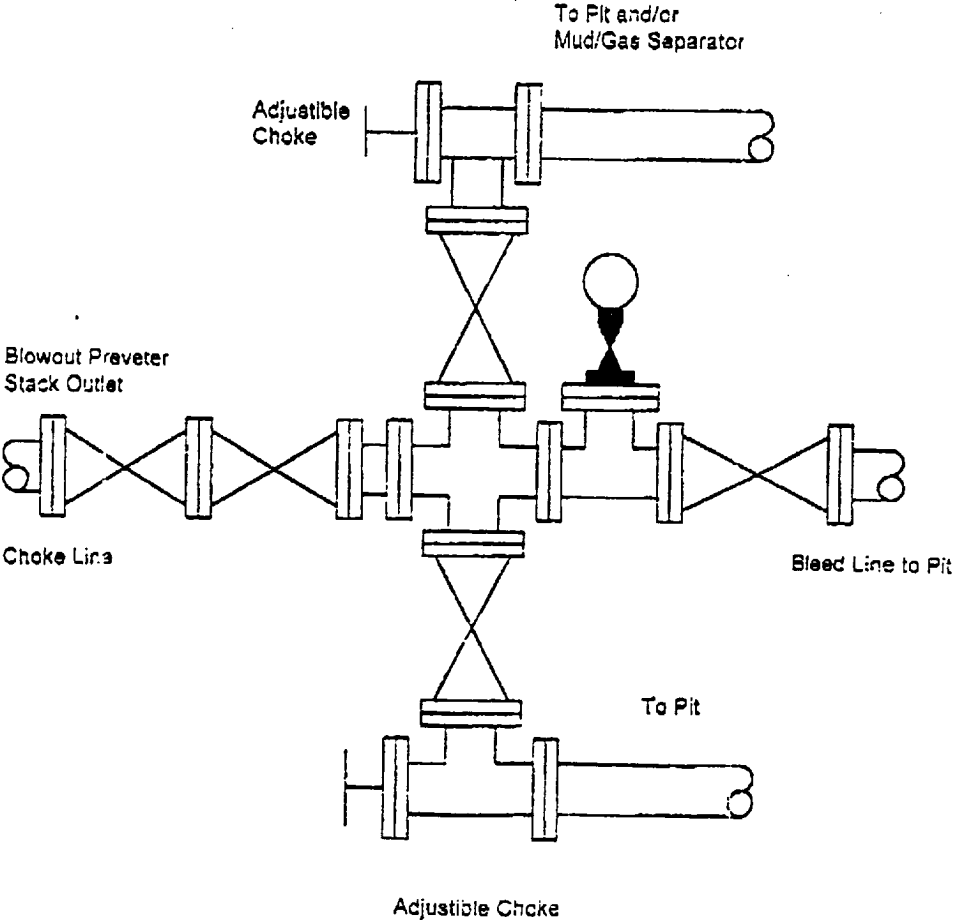
1. Drill 25" hole to 40'. Set 40' of 20" conductor pipe and cement to surface with Redi-mix.
2. Drill 17½" hole to 350'. Run and set 350' of 13 3/8" 48# H-40 ST&C casing. Cement with 400 Sx. of Class "C" cement + 2% CaCl, + ¼# Flocele/Sx. circulate cement to surface.
3. Drill 12¼" hole to 2000'. Run and set 2000' of 8 5/8" 32# J-55 ST&C casing. Cement with 600 Sx. of Class "C" Light weight cement + additives, tail in with 200 Sx. of Class "C" cement + 2% CaCl, + ¼# Flocele/Sx. circulate cement to surface.
4. Drill 7 7/8" hole to 9800'. Run and set 9800' of 4½" 11.6# N-80 LT&C casing. Cement with 400 Sx. of Class "H" light cement + additives, tail in with 500 Sx. of Class "H" Premium Plus cement + additives, estimate top of cement 6000' from surface.

I hereby certify that the information given above is true and complete to the best of my knowledge and belief. Signature: Joe T. Janica		OIL CONSERVATION DIVISION APPROVED BY: ORIGINAL SIGNED BY TIM W. GUM DISTRICT II SUPERVISOR	
Printed name: Joe T. Janica		Title:	
Title: Agent		Approval Date: JUL 16 2002 Expiration Date: JUL 16 2003	
Date: 07/15/02	Phone: 505-391-8503	Conditions of Approval: Attached <input type="checkbox"/>	

# BLOWOUT PREVENTER SYSTEM



Choke Manifold Assembly for 3M WP System



DISTRICT I  
1625 N. French Dr., Hobbs, NM 88240

DISTRICT II  
811 South First, Artesia, NM 88210

DISTRICT III  
1000 Rio Brazos Rd., Aztec, NM 87410

DISTRICT IV  
2040 South Pacheco, Santa Fe, NM 87505

State of New Mexico  
Energy, Minerals and Natural Resources Department

Form C-102  
Revised March 17, 1999

Submit to Appropriate District Office  
State Lease - 4 Copies  
Fee Lease - 3 Copies

OIL CONSERVATION DIVISION

2040 South Pacheco  
Santa Fe, New Mexico 87505

☐ AMENDED REPORT

WELL LOCATION AND ACREAGE DEDICATION PLAT

API Number	Pool Code 76079	Pool Name DIAMOND MOUND-MORROW
Property Code	Property Name CROW FLATS "11" STATE COM	Well Number 2
OGRID No. 193407	Operator Name CONCHO RESOURCES, INC.	Elevation 3549'

Surface Location

UL or lot No. O	Section 11	Township 16 S	Range 28 E	Lot Idn	Feet from the 660	North/South line SOUTH	Feet from the 1980	East/West line EAST	County EDDY
--------------------	---------------	------------------	---------------	---------	----------------------	---------------------------	-----------------------	------------------------	----------------

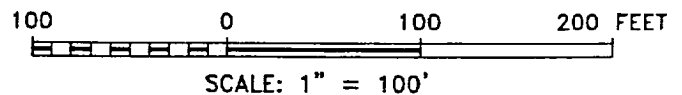
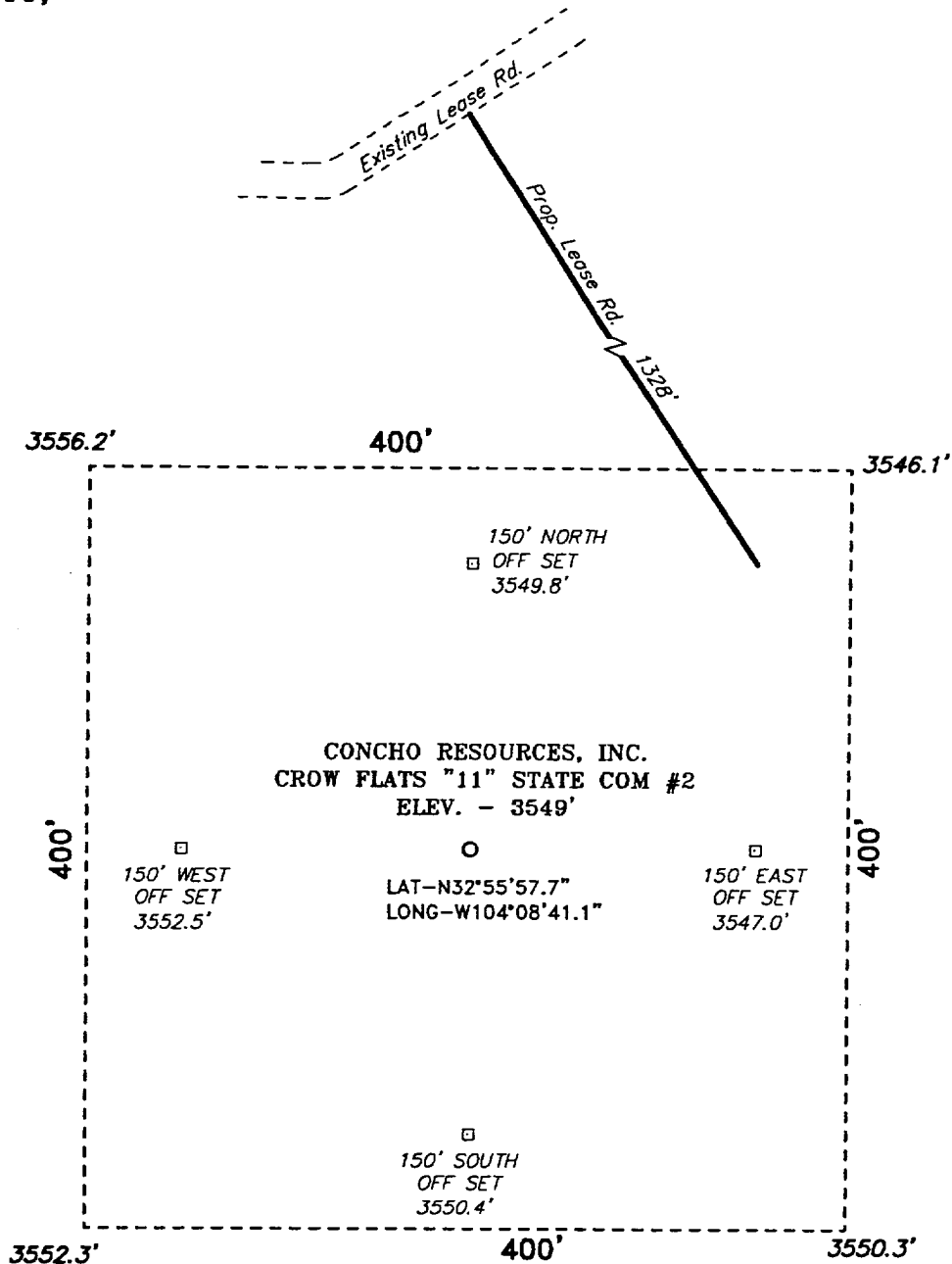
Bottom Hole Location If Different From Surface

UL or lot No.	Section	Township	Range	Lot Idn	Feet from the	North/South line	Feet from the	East/West line	County
Dedicated Acres 320	Joint or Infill	Consolidation Code	Order No.						

NO ALLOWABLE WILL BE ASSIGNED TO THIS COMPLETION UNTIL ALL INTERESTS HAVE BEEN CONSOLIDATED  
OR A NON-STANDARD UNIT HAS BEEN APPROVED BY THE DIVISION

	<p>OPERATOR CERTIFICATION</p> <p>I hereby certify the the information contained herein is true and complete to the best of my knowledge and belief.</p> <p><i>Joe T. Janica</i> Signature Joe T. Janica Printed Name Agent Title 07/15/02 Date</p>	
	<p>SURVEYOR CERTIFICATION</p> <p>I hereby certify that the well location shown on this plat was plotted from field notes of actual surveys made by me or under my supervision and that the same is true and correct to the best of my belief.</p> <p>JUNE 11, 2002 Date Surveyed Signature of Gary L. Jones Professional Surveyor W.O. No. 25528 Certified No. Gary L. Jones 7977 BASIN SURVEYS</p>	

SECTION 11, TOWNSHIP 16 SOUTH, RANGE 28 EAST, N.M.P.M.,  
EDDY COUNTY, NEW MEXICO.



**DIRECTIONS TO LOCATION:**

FROM THE JUNCTION OF US HWY 82 AND CO. RD.  
214(BARNAVAL DRAW RD.) 4.3 MILES WEST OF LOCO HILLS,  
GO NORTHERLY ON 214 FOR 6.8 MILES TO A LEASE ROAD  
LEFT; THENCE GO NORTHWESTERLY 4.3 MILES TO A "Y" AND  
TAKE LEFT FORK FOR 1.3 MILE TO PROPOSED LEASE ROAD.

**CONCHO RESOURCES, INC.**

REF: CROW FLATS "11" STATE COM No. 2 / Well Pad Topo

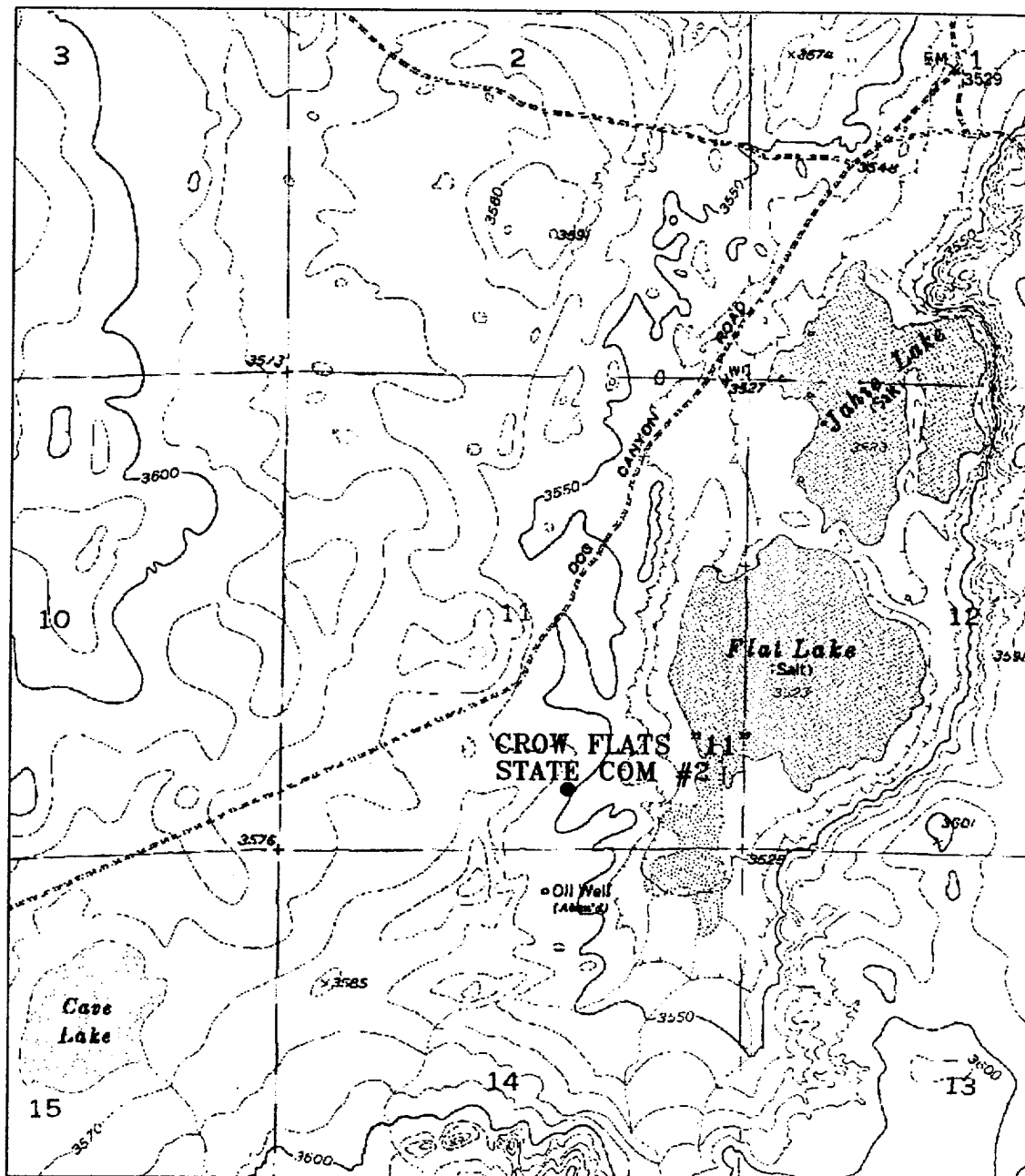
THE CROW FLATS "11" STATE COM No. 2 LOCATED 660'  
FROM THE SOUTH LINE AND 1980' FROM THE EAST LINE OF  
SECTION 11, TOWNSHIP 16 SOUTH, RANGE 28 EAST,  
N.M.P.M., EDDY COUNTY, NEW MEXICO.

**Basin Surveys** P.O. BOX 1786 - HOBBS, NEW MEXICO

W.O. Number: 2614 Drawn By: **K. GOAD**

Date: 07-12-2002 Disk: KJG CD#4 - 2614A.DWG

Survey Date: 07-10-2002 Sheet 1 of 1 Sheets



**CROW FLATS "11" STATE COM #2**  
 Located at 660' FSL and 1980' FEL  
 Section 11, Township 16 South, Range 28 East,  
 N.M.P.M., Eddy County, New Mexico.

**basin**  
**surveys**  
 focused on excellence  
 in the oilfield

P.O. Box 1786  
 1120 N. West County Rd.  
 Hobbs, New Mexico 88241  
 (505) 393-7316 - Office  
 (505) 392-3074 - Fax  
 basinsurveys.com

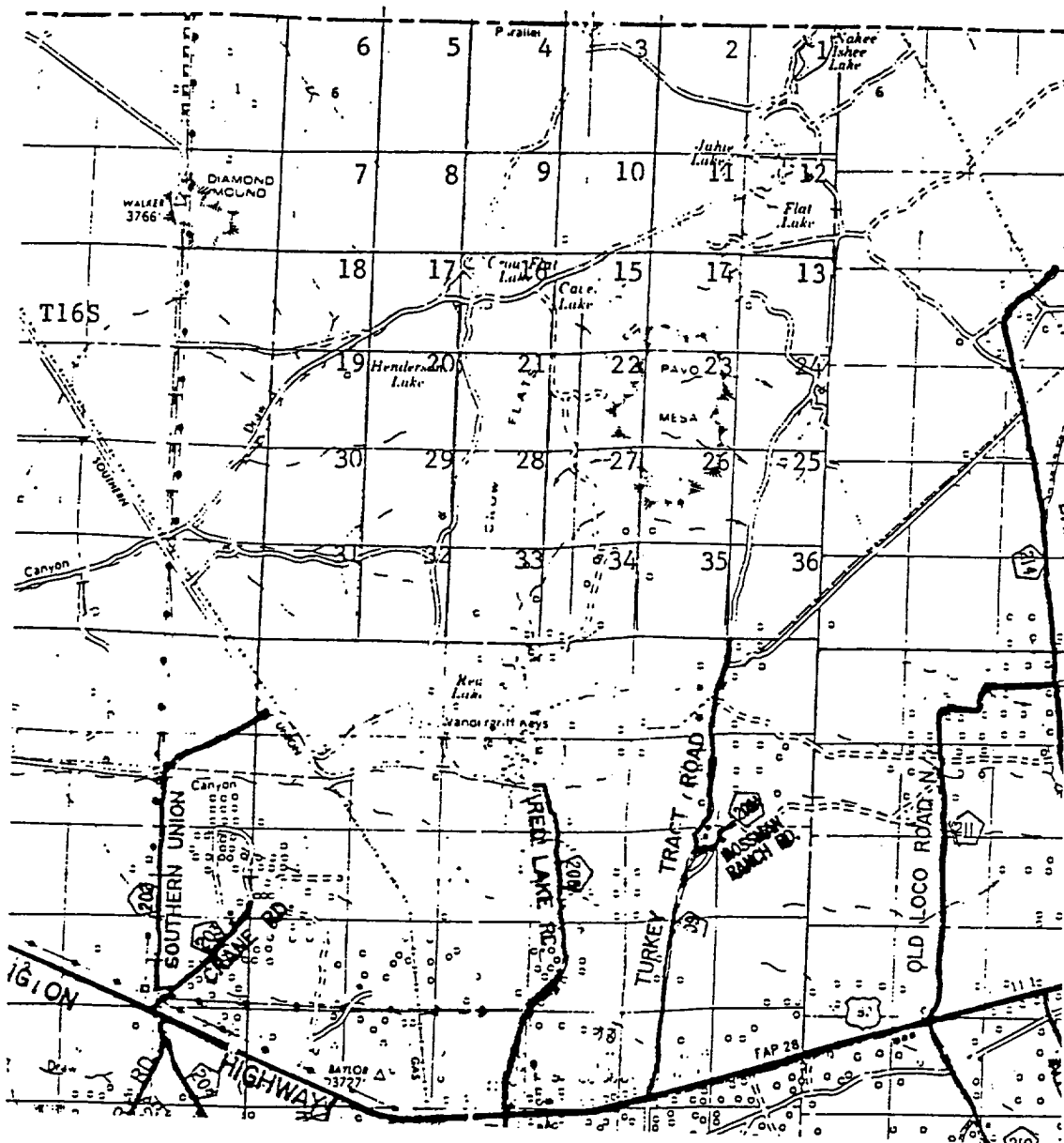
W.O. Number: 2614AA - KJG CD#5

Survey Date: 07-10-2002

Scale: 1" = 2000'

Date: 07-12-2002

**CONCHO**  
**RESOURCES,**  
**INC.**



CROW FLATS "11" STATE COM #2  
 Located at 660' FSL and 1980' FEL  
 Section 11, Township 16 South, Range 28 East,  
 N.M.P.M., Eddy County, New Mexico.

**basin**  
**surveys**  
 focused on excellence  
 in the oilfield

P.O. Box 1786  
 1120 N. West County Rd.  
 Hobbs, New Mexico 88241  
 (505) 393-7316 - Office  
 (505) 392-3074 - Fax  
 basin-surveys.com

W.O. Number: 2614AA - KJG CD#5

Survey Date: 07-10-2002

Scale: 1" = 2 MILES

Date: 07-12-2002

**CONCHO**  
**RESOURCES,**  
**INC.**