

District I
PO Box 1980, Hobbs, NM 88241-1980
District II
PO Drawer DD, Artesia, NM 88211-0719
District III
1000 Rio Brazos Rd., Aztec, NM 87410
District IV
PO Box 2088, Santa Fe, NM 87504-2088

State of New Mexico
Energy, Minerals & Natural Resources Department

OIL CONSERVATION DIVISION
PO Box 2088
Santa Fe, NM 87504-2088

CISF
BIM
S&D
Submit to Appropriate District Office

Form C-101
Revised February 10, 1994
Instructions on back
State Lease - 6 Copies
Fee Lease - 5 Copies

☐ AMENDED REPORT

APPLICATION FOR PERMIT TO DRILL, RE-ENTER, DEEPEN, PLUG BACK, OR ADD A ZONE

Operator Name and Address: MURCHISON OIL & GAS, INC. 1100 MIRA VISTA BLVD. PLANO, TX. 75093-4698		OCRID Number 015363
Property Code 30288	Property Name KODIAK BEAR ST. COM.	API Number 30-015-32388
		Well No. 1

Surface Location

UL or lot no.	Section	Township	Range	Lot Ida	Feet from the	North/South Line	Feet from the	East/West Line	County
N/A	1	17S	28E		810	SOUTH	1980	WEST	EDDY

Proposed Bottom Hole Location

UL or lot no.	Section	Township	Range	Lot Ida	Feet from the	No.	County
Proposed Pool 1 EMPIRE MORROW SOUTH							Cement to cover all oil, gas and water bearing zones.

Work Type Code N	Well Type Code G	Cable/Rotary ROTARY	Lease Type Code S	Ground Level Elevation 3613'
Multiple N	Proposed Depth 10700	Formation MORROW	Contractor	Spud Date 9/1/02

Proposed Casing and Cement Program

Hole Size	Casing Size	Casing weight/foot	Setting Depth	Sacks of Cement	Estimated TOC
17-1/2"	13-3/8"	61 #/FT	200' 250	355	SURFACE
12-1/4"	9-5/8"	47 #/FT	2450	900	SURFACE
8-3/4"	5-1/2"	17 #/FT	10700	1510	5600

Describe the proposed program. If this application is to DEEPEN or PLUG BACK give the data on the present productive zone and proposed new productive zone. Describe the blowout prevention program, if any. Use additional sheets if necessary.

DRILL, CASE AND COMPLETE WELL IN MORROW FORMATION

- BOP'S INCLUDE:
- 1) HYDRILL DOUBLE RAM 11" x 3000 PSI
 - 2) CHOKE MANIFOLD 4" x 5000 PSI FLANGED CONNECTION
 - 3) SIX STATION ACCUMULATOR CLOSING UNIT w/ REMOTE CONTROL

I hereby certify that the information given above is true and complete to the best of my knowledge and belief.

Signature:

Printed name:

MICHAEL S. DAUGHERTY

Title:

VICE PRESIDENT OPERATIONS

Date:

7/23/02

Phone:

(972) 931-0700

OIL CONSERVATION DIVISION

Approved by:

Title:

Approval Date:

Conditions of Approval:

Attached ☐

Expiration Date:

24 2002

24 2003

State of New Mexico

DISTRICT I

P.O. Box 1980, Hobbs, NM 88241-1980

Energy, Minerals and Natural Resources Department

Form C-102

Revised February 10, 1994

DISTRICT II

P.O. Drawer DD, Artesia, NM 88211-0710

OIL CONSERVATION DIVISION

P.O. Box 2088

Submit to Appropriate District Office

State Lease - 4 Copies

Fee Lease - 3 Copies

DISTRICT III

1000 Rio Brazos Rd., Aztec, NM 87410

Santa Fe, New Mexico 87504-2088

DISTRICT IV

P.O. BOX 2088, SANTA FE, N.M. 87504-2088

WELL LOCATION AND ACREAGE DEDICATION PLAT

☐ AMENDED REPORT

API Number	Pool Code 76400	Pool Name SOUTH EMPIRE MORROW
Property Code	Property Name KODIAK BEAR STATE COM	Well Number 1
OGRID No. 015363	Operator Name MURCHISON OIL & GAS, INC.	Elevation 3613'

Surface Location

UL or lot No.	Section	Township	Range	Lot Idn	Feet from the	North/South line	Feet from the	East/West line	County
N	1	17-S	28-E		810	SOUTH	1980	WEST	EDDY

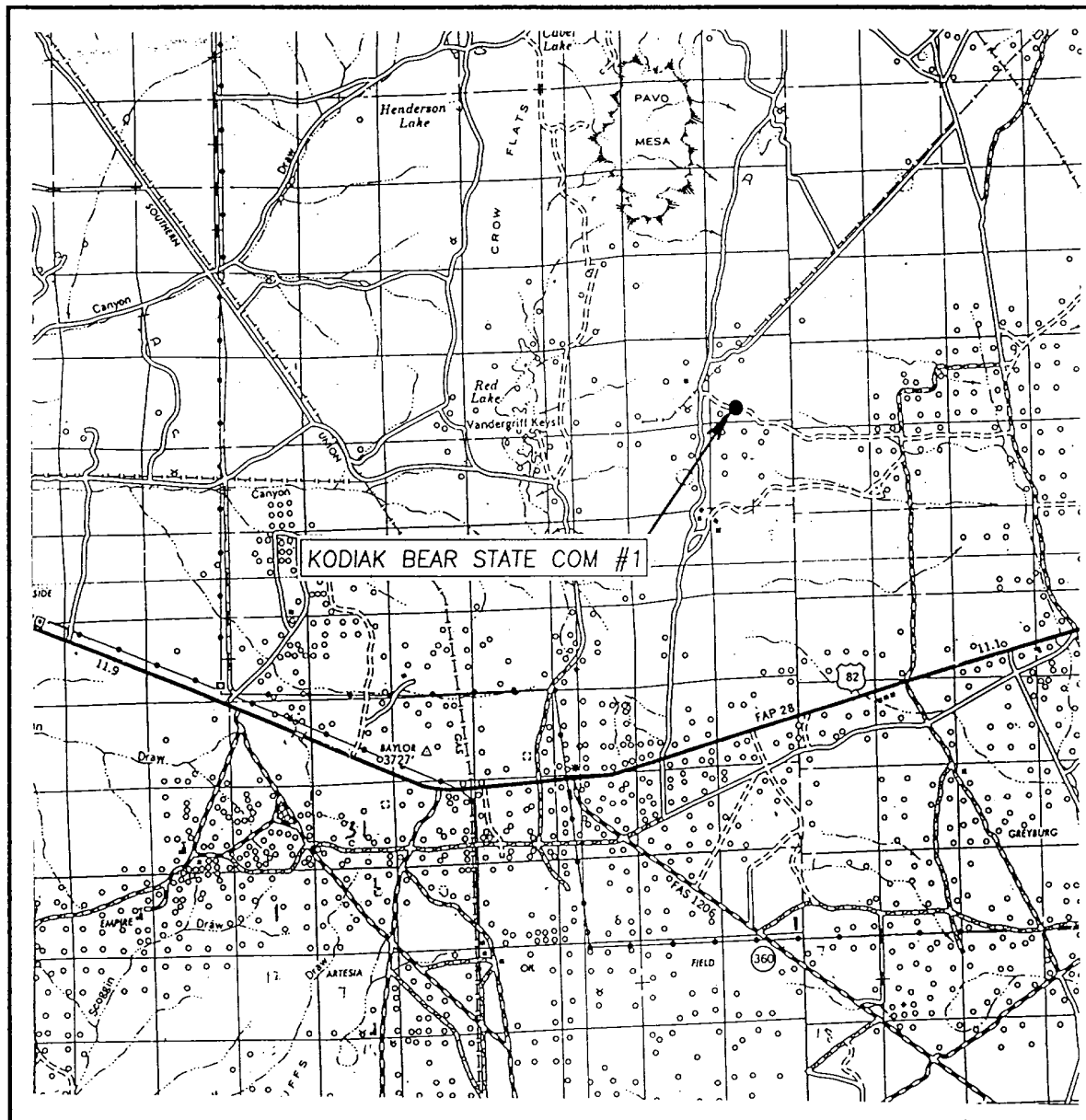
Bottom Hole Location If Different From Surface

UL or lot No.	Section	Township	Range	Lot Idn	Feet from the	North/South line	Feet from the	East/West line	County
Dedicated Acres 320	Joint or Infill	Consolidation Code	Order No.						

NO ALLOWABLE WILL BE ASSIGNED TO THIS COMPLETION UNTIL ALL INTERESTS HAVE BEEN CONSOLIDATED
OR A NON-STANDARD UNIT HAS BEEN APPROVED BY THE DIVISION

LOT 4	LOT 3	LOT 2	LOT 1	<p>OPERATOR CERTIFICATION</p> <p>I hereby certify the the information contained herein is true and complete to the best of my knowledge and belief.</p> <p><i>Michael S. Daugherty</i> Signature MICHAEL S. DAUGHERTY Printed Name VICE PRESIDENT OPERATIONS Title 7/23/02 Date</p> <p>SURVEYOR CERTIFICATION</p> <p>I hereby certify that the well location shown on this plat was plotted from field notes of actual surveys made by me or under my supervision, and that the same is true and correct to the best of my belief.</p> <p>JULY 18, 2002 Date Surveyed AWB Signature & Seal of Professional Surveyor <i>Ronald L. Eidson</i> 02.11.0531 Certificate No. RONALD L. EIDSON 3239 GARY EIDSON 12641</p>
<p>SPACING UNIT</p> <p>1980'</p> <p>810'</p>				

VICINITY MAP



SCALE: 1" = 2 MILES

SEC. 1 TWP. 17-S RGE. 28-E

SURVEY N.M.P.M.

COUNTY EDDY

DESCRIPTION 810' FSL & 1980' FWL

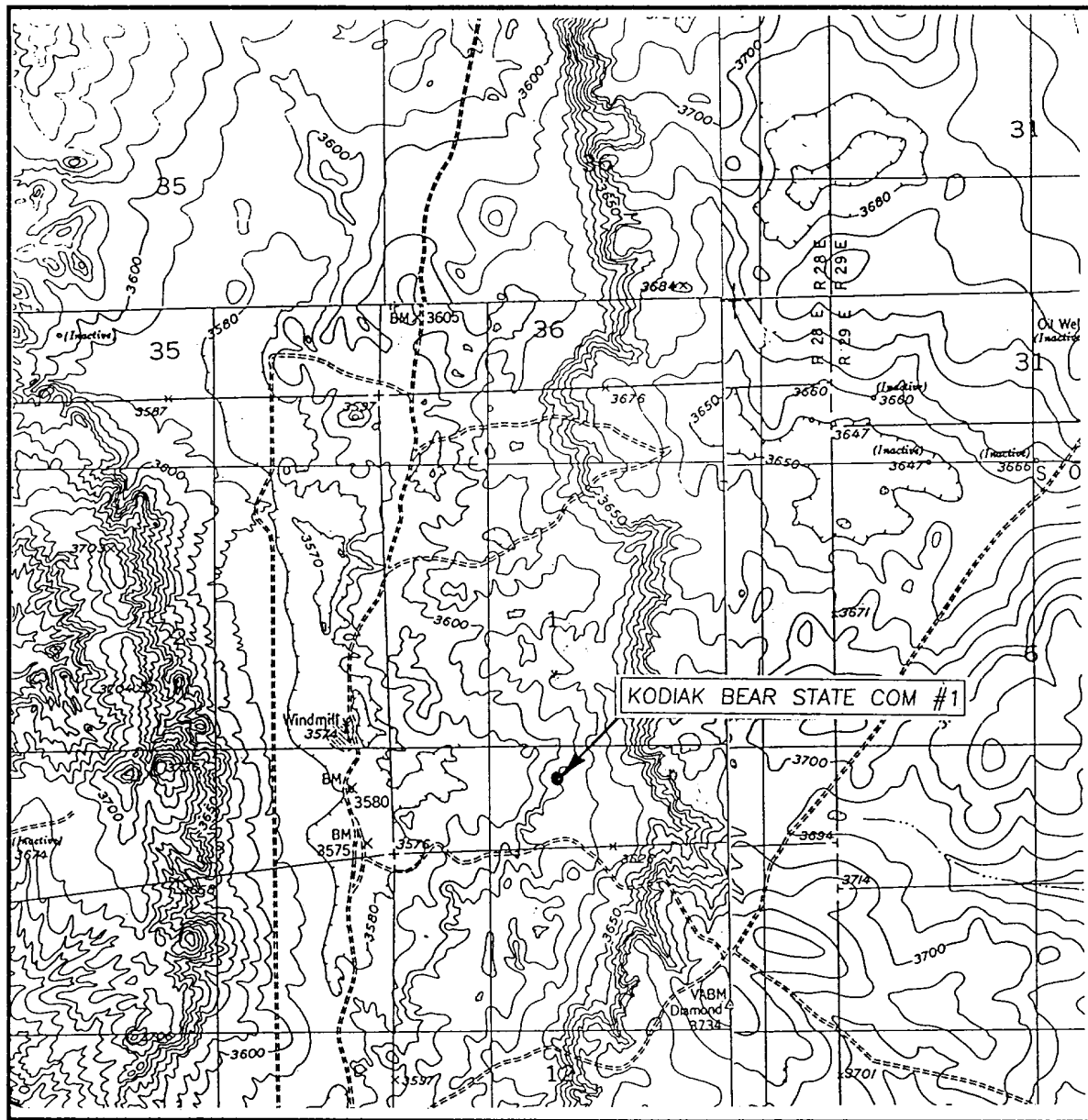
ELEVATION 3613'

OPERATOR MURCHISON OIL & GAS INC.

LEASE KODIAK BEAR STATE COM

JOHN WEST SURVEYING
HOBBS, NEW MEXICO
(505) 393-3117

LOCATION VERIFICATION MAP



SCALE: 1" = 2000'

CONTOUR INTERVAL: 10'
RED LAKE & RED LAKE SE, N.M.

SEC. 1 TWP. 17-S RGE. 28-E

SURVEY N.M.P.M.

COUNTY EDDY

DESCRIPTION 810' FSL & 1980' FWL

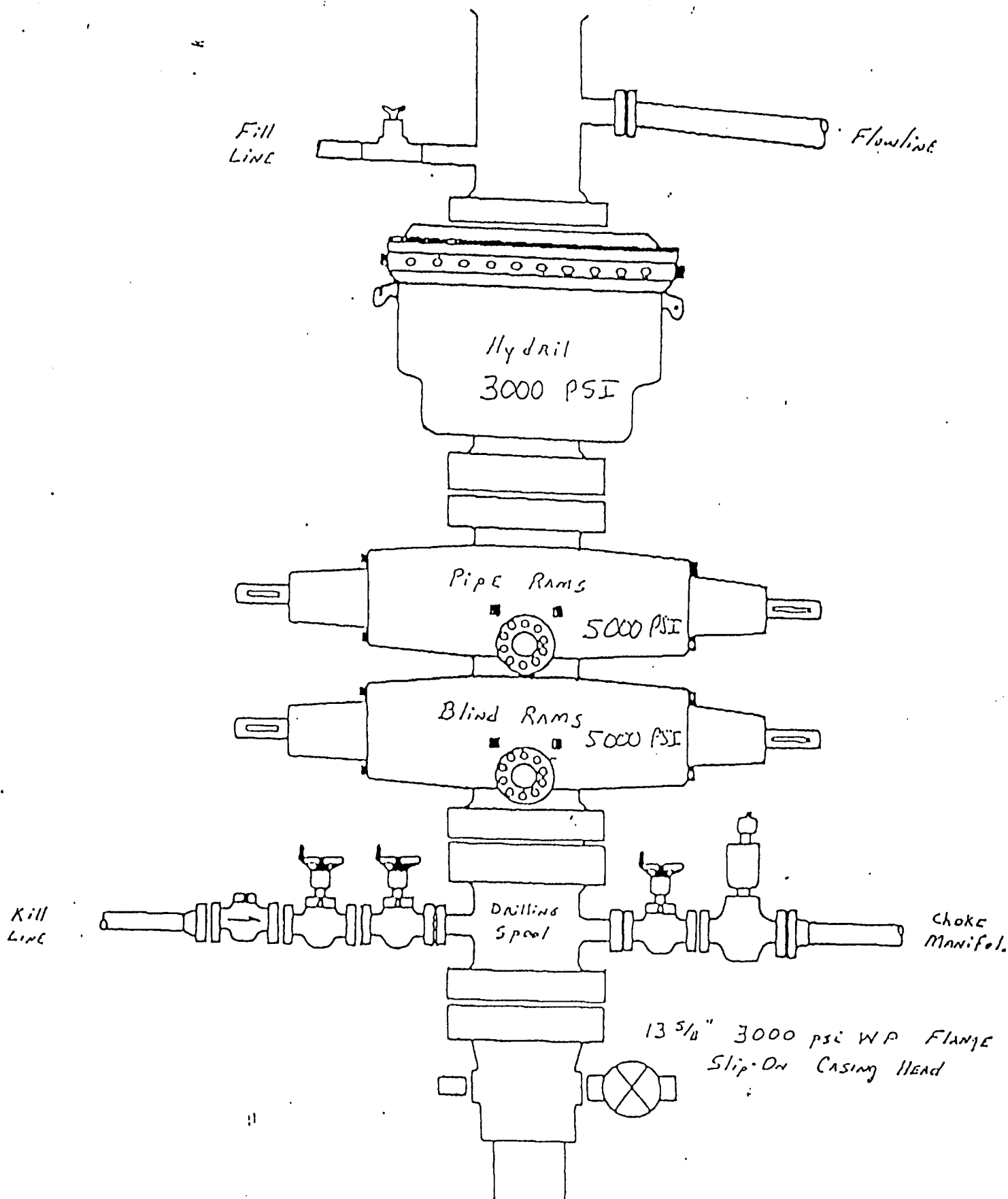
ELEVATION 3613'

OPERATOR MURCHISON OIL & GAS INC.

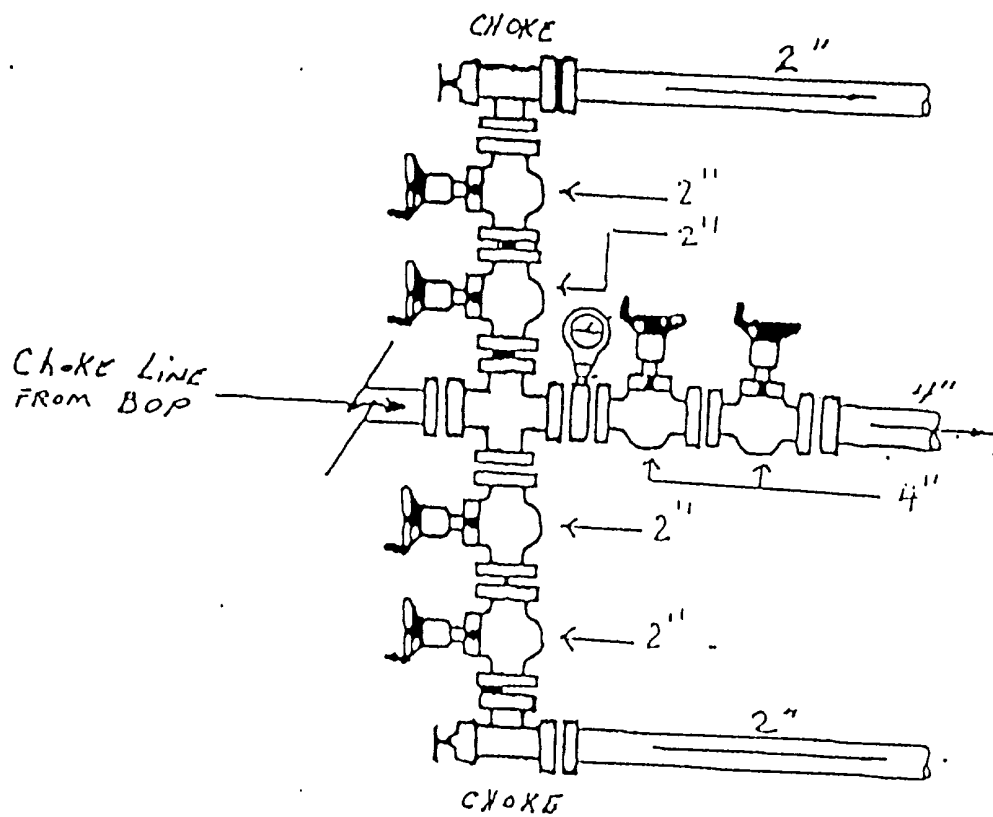
LEASE KODIAK BEAR STATE COM

U.S.G.S. TOPOGRAPHIC MAP
RED LAKE & RED LAKE SE, N.M.

JOHN WEST SURVEYING
HOBBS, NEW MEXICO
(505) 393-3117



KODIAK BEAR STATE COM #1
810' FSL & 1980' FWL
SEC. 1, T17S, R28E
EDDY CO., NM.



KODIAK BEAR STATE COM #1
 810' FSL & 1980' FWL
 SEC. 1, T17S, R28E
 EDDY CO., NM.